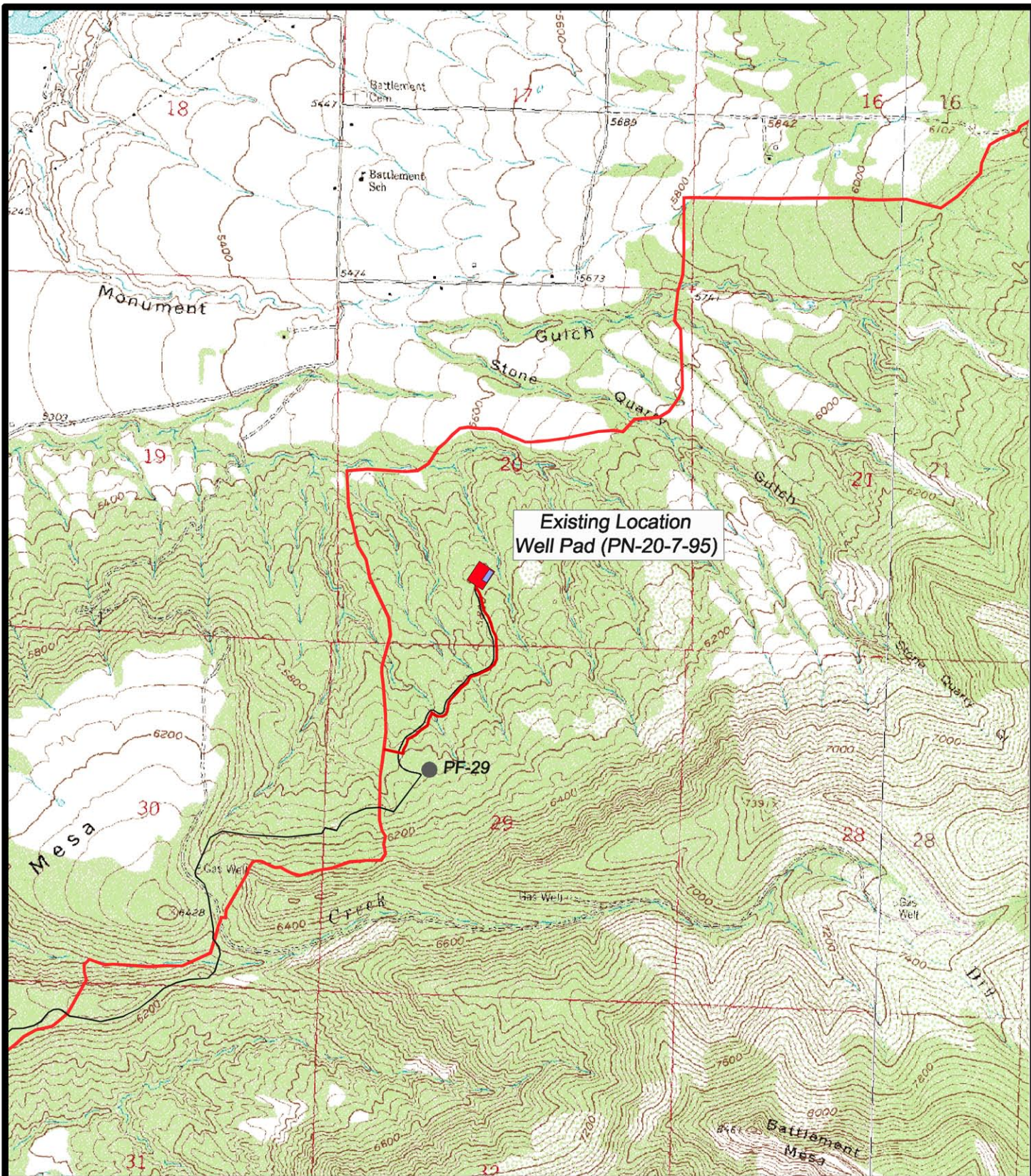




<p>2000 1000 0 (SCALE IN FEET)</p>	<p><b>EnCana Oil &amp; Gas (USA) Inc.</b></p> <p><b>Well Pad PN-20-7-95</b></p> <p><b>Section 20, T7S, R95W, 6th P.M.</b></p> <p><b>Garfield County, Colorado</b></p>	<p><b>WASATCH SURVEYING</b> 906 Main Street Evanston, Wyoming 82930 Phone No. (307) 789-4545</p> <p>DATE: July 1, 2008</p> <p>SCALE: 1" = 2000'</p> <p>PROJECT NO.: 05-04-73</p>	<p><b>—LEGEND—</b></p> <p> Existing Road</p> <p><b>Topo "B"</b></p> <p><b>SHEET 9 OF 10</b></p>





<p>(SCALE IN FEET)</p>	<p><b>EnCana Oil &amp; Gas (USA) Inc.</b></p> <p><b>Well Pad PN-20-7-95</b></p> <p><b>Section 20, T7S, R95W, 6th P.M.</b></p> <p><b>Garfield County, Colorado</b></p>	<p><b>WASATCH SURVEYING</b></p> <p>906 Main Street Evanston, Wyoming 82930 Phone No. (307) 789-4545</p> <p>DATE: July 1, 2008</p> <p>SCALE: 1" = 2000'</p> <p>PROJECT NO.: 05-04-73</p>	<p><b>—LEGEND—</b></p> <p>— Proposed Access</p> <p>— Existing Gas Line</p>

**Topo**  
**"C"**

**SHEET**  
**10**  
**OF 10**