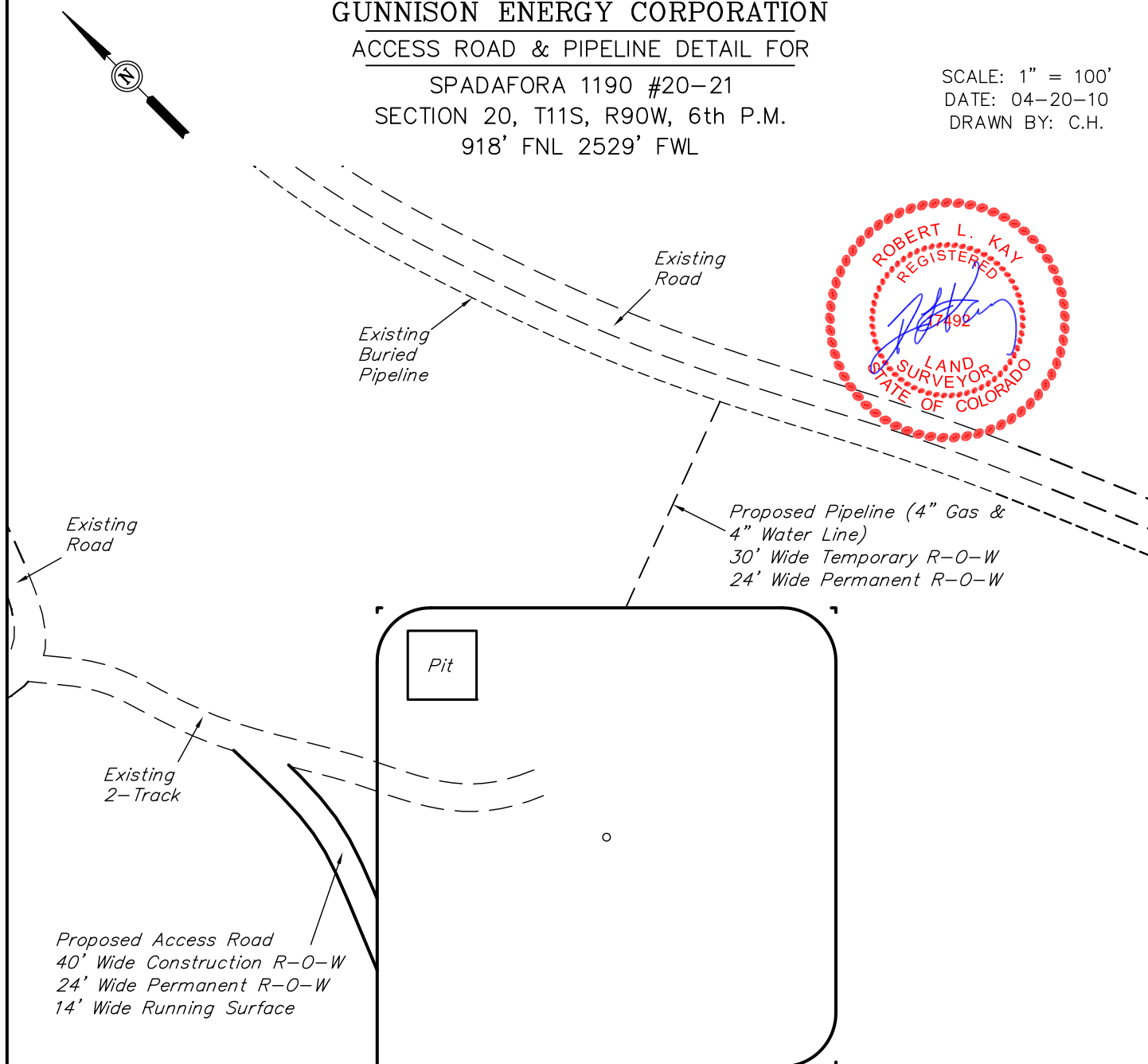


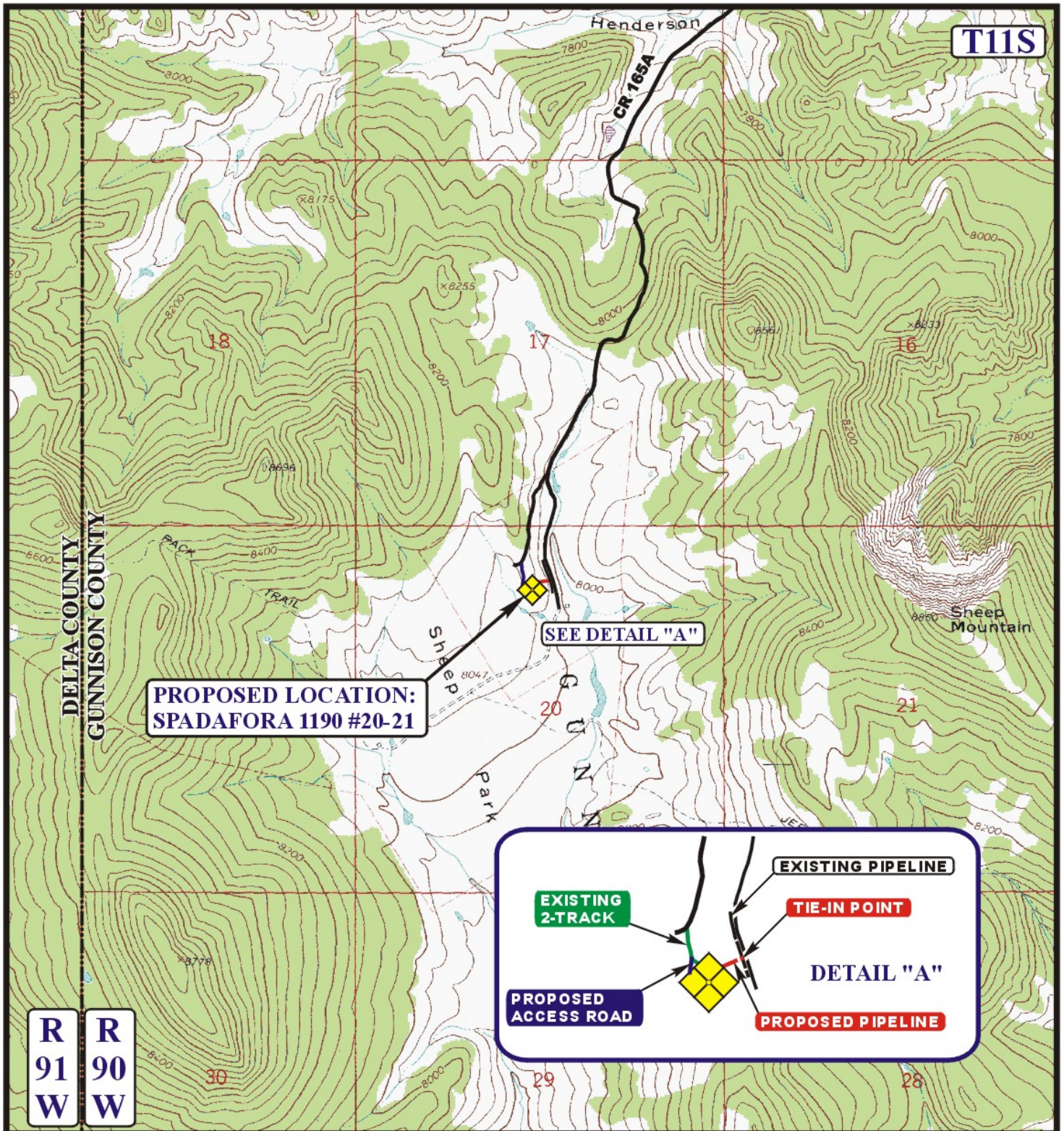
GUNNISON ENERGY CORPORATION

ACCESS ROAD & PIPELINE DETAIL FOR

SPADAFORA 1190 #20-21
SECTION 20, T11S, R90W, 6th P.M.
918' FNL 2529' FWL

SCALE: 1" = 100'
DATE: 04-20-10
DRAWN BY: C.H.





APPROXIMATE TOTAL PIPELINE DISTANCE = 150' +/-

LEGEND:

- PROPOSED ACCESS ROAD
- EXISTING PIPELINE
- PROPOSED PIPELINE



GUNNISON ENERGY CORPORATION

SPADAFORA 1190 #20-21
SECTION 20, T11S, R90W, 6th P.M.
918' FNL 2529' FWL



Uintah Engineering & Land Surveying
 85 South 200 East Vernal, Utah 84078
 (435) 789-1017 * FAX (435) 789-1813

**TOPOGRAPHIC
MAP**

04 21 10
 MONTH DAY YEAR

SCALE: 1" = 2000' DRAWN BY: J.H. REVISED: 00-00-00

