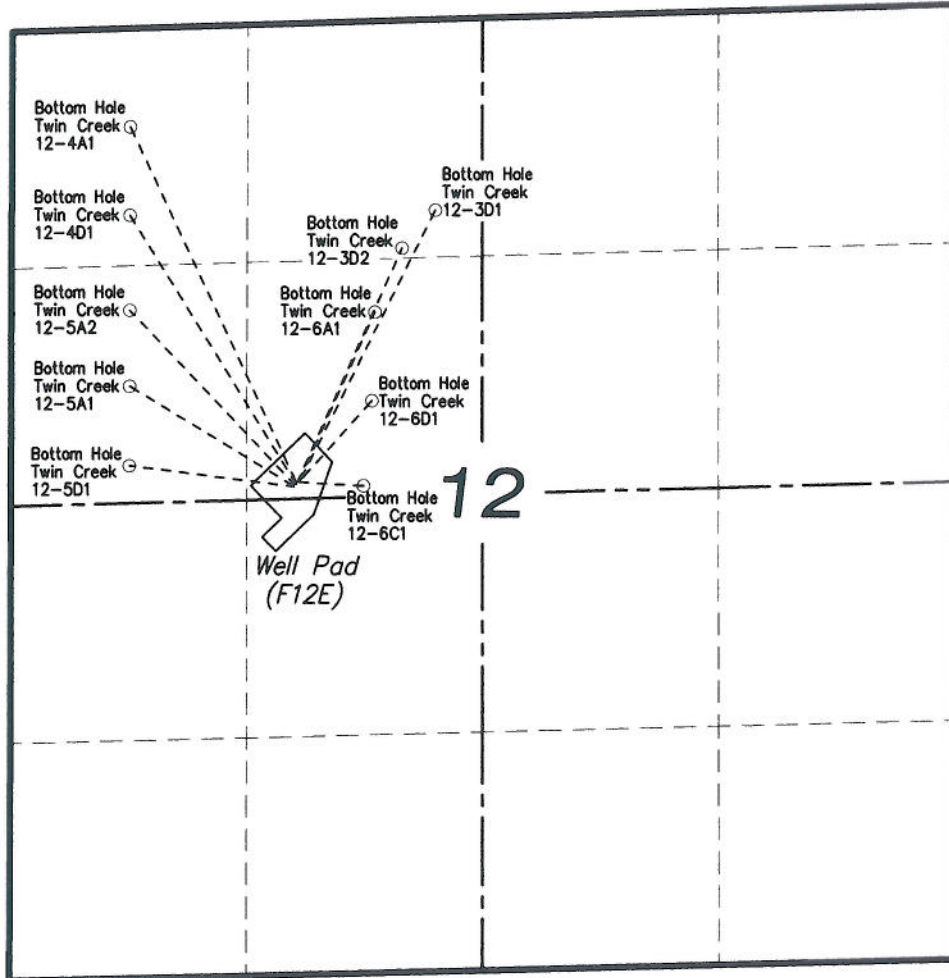
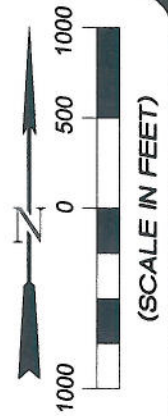


SECTION 12
T7S, R92W, 6th P.M.
EnCana Oil & Gas (USA) Inc.
Well Pad (F12E)
SECTION DRILLING MAP



906 Main Street
 Evanston, Wyoming 82930
 Phone No. (307) 789-4545

		Scale: 1" = 1000'	SHEET 1 OF 10
Project No.	08-04-53	Date Surveyed: 08/13/08	
Date Drawn:	12/22/09	Latest Revision Date: 1/19/10	

EnCana Oil & Gas (USA) Inc.

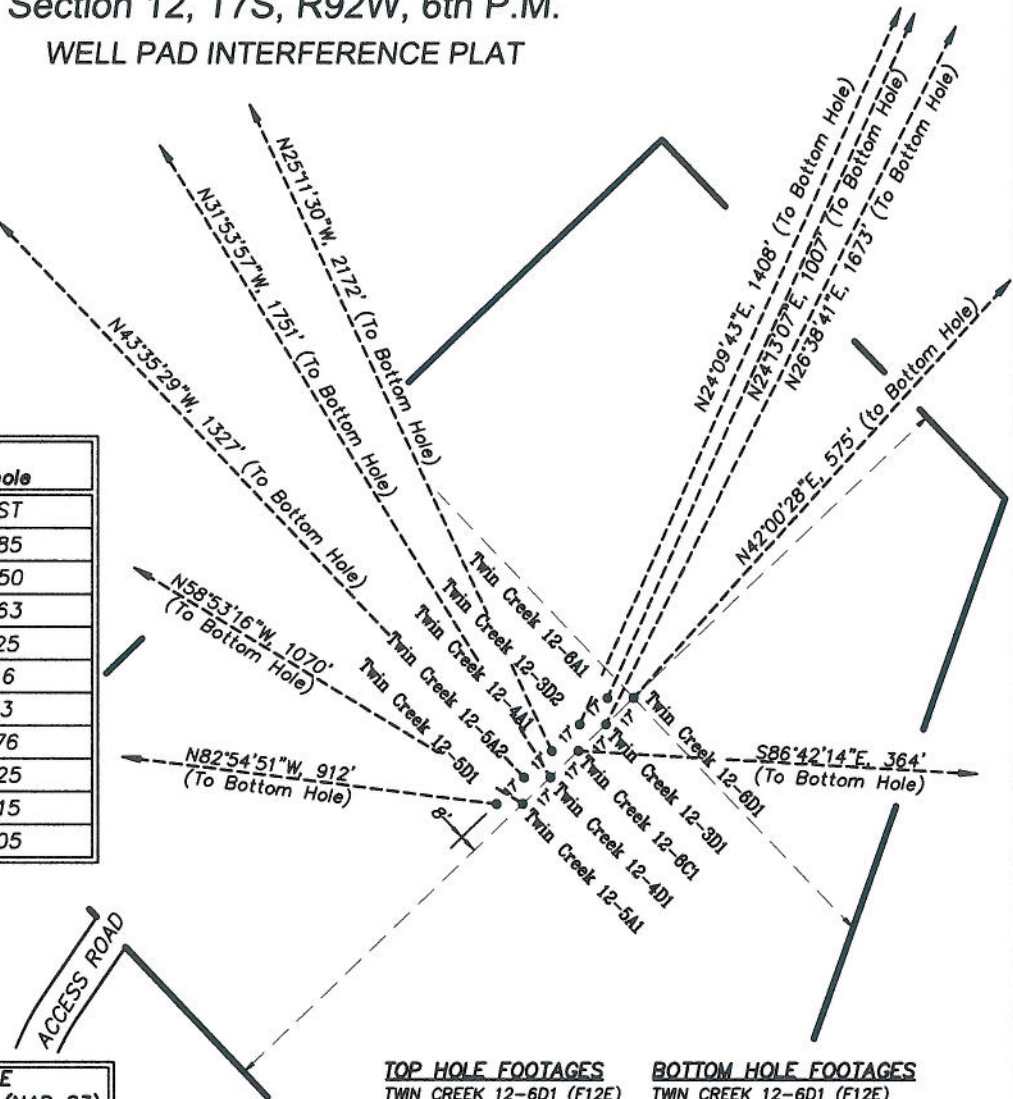
Well Pad (F12E)

Section 12, T7S, R92W, 6th P.M.

WELL PAD INTERFERENCE PLAT



RELATIVE COORDINATES From top hole to bottom hole		
WELL	NORTH	EAST
12-6D1	427	385
12-3D1	1495	750
12-6C1	-21	363
12-4D1	1487	-925
12-5A1	553	-916
12-6A1	918	413
12-3D2	1285	576
12-4A1	1965	-925
12-5A2	961	-915
12-5D1	113	-905



LATITUDE & LONGITUDE Surface position of Wellheads (NAD 83)		
WELL	LATITUDE	LONGITUDE
12-6D1	39.46208°	107.61872°
12-3D1	39.46205°	107.61877°
12-6C1	39.46202°	107.61881°
12-4D1	39.46198°	107.61885°
12-5A1	39.46195°	107.61890°
12-6A1	39.46208°	107.61876°
12-3D2	39.46205°	107.61881°
12-4A1	39.46202°	107.61885°
12-5A2	39.46198°	107.61890°
12-5D1	39.46195°	107.61894°

TOP HOLE FOOTAGES

TWIN CREEK 12-6D1 (F12E)
2515' FNL & 1626' FWL
TWIN CREEK 12-3D1 (F12E)
2527' FNL & 1614' FWL
TWIN CREEK 12-6C1 (F12E)
2538' FNL & 1602' FWL
TWIN CREEK 12-4D1 (F12E)
2549' FNL & 1590' FWL
TWIN CREEK 12-5A1 (F12E)
2561' FNL & 1577' FWL
TWIN CREEK 12-6A1 (F12E)
2515' FNL & 1615' FWL
TWIN CREEK 12-3D2 (F12E)
2526' FNL & 1603' FWL
TWIN CREEK 12-4A1 (F12E)
2538' FNL & 1590' FWL
TWIN CREEK 12-5A2 (F12E)
2549' FNL & 1578' FWL
TWIN CREEK 12-5D1 (F12E)
2560' FNL & 1586' FWL

BOTTOM HOLE FOOTAGES

TWIN CREEK 12-6D1 (F12E)
2100' FNL & 2010' FWL SEC. 12
TWIN CREEK 12-3D1 (F12E)
1055' FNL & 2360' FWL SEC. 12
TWIN CREEK 12-6C1 (F12E)
2570' FNL & 1965' FWL SEC. 12
TWIN CREEK 12-4D1 (F12E)
1035' FNL & 660' FWL SEC. 12
TWIN CREEK 12-5A1 (F12E)
1980' FNL & 660' FWL SEC. 12
TWIN CREEK 12-6A1 (F12E)
1610' FNL & 2025' FWL SEC. 12
TWIN CREEK 12-3D2 (F12E)
1260' FNL & 2175' FWL SEC. 12
TWIN CREEK 12-4A1 (F12E)
545' FNL & 660' FWL SEC. 12
TWIN CREEK 12-5A2 (F12E)
1560' FNL & 660' FWL SEC. 12
TWIN CREEK 12-5D1 (F12E)
2420' FNL & 660' FWL SEC. 12



(SCALE IN FEET)

906 Main Street
Evanston, Wyoming 82930
Phone No. (307) 789-4545



Interference Plat		Scale: 1" = 80'	SHEET
Project No.	08-04-53	Date Surveyed: 08/13/08	2
Date Drawn: 12/15/09		Latest Revision Date: 1/19/10	
			OF 10