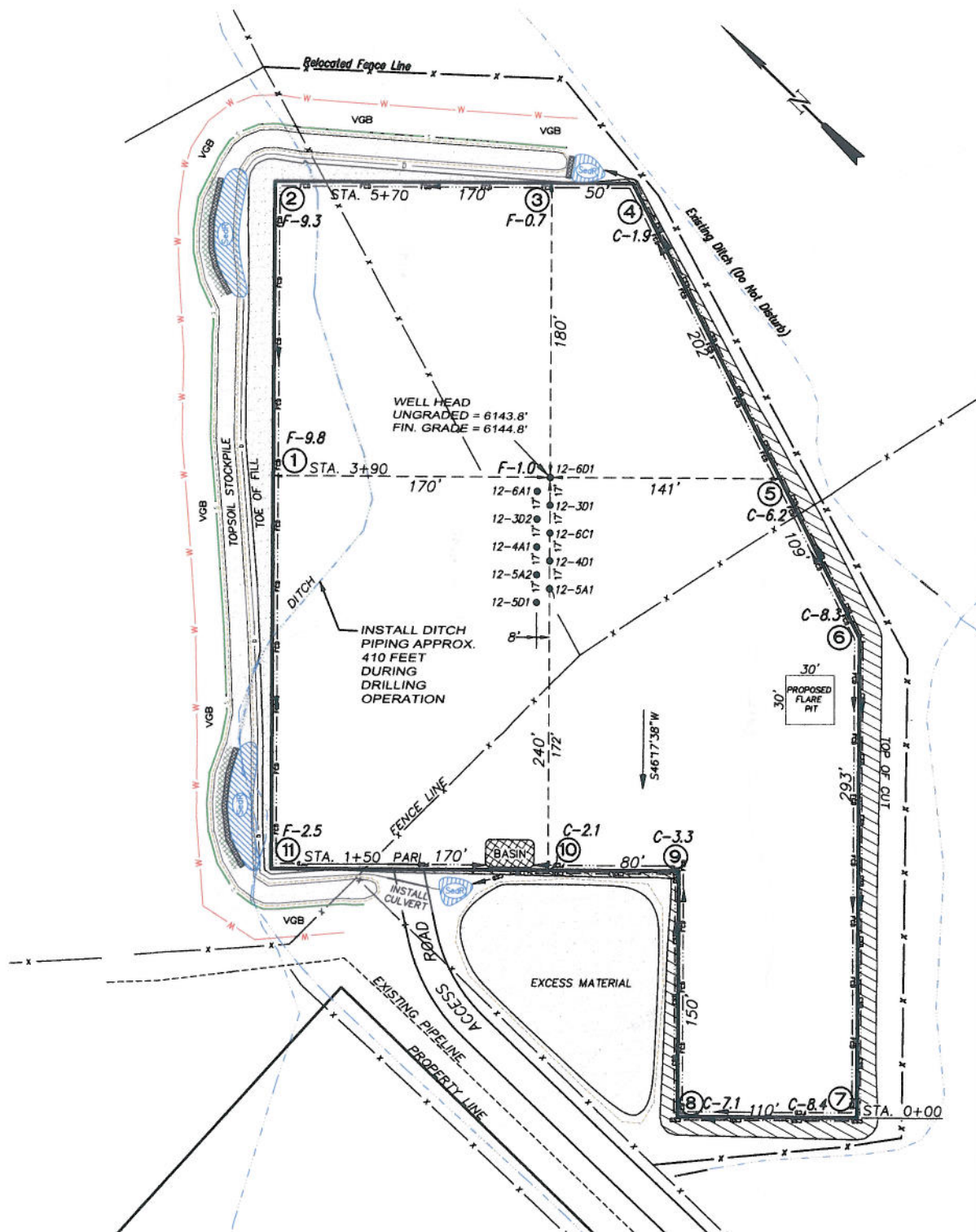


EnCana Oil & Gas (USA) Inc.

F12E Well Pad

SE1/4 NW1/4, SECTION 12, T 7 S, R 92 W, 6th P.M.
WELL PAD LAYOUT



Total Surface Disturbance = 5.36 Acres
(See Sheet 4 for Details)

- NOTES:
- (1) Slope Track and/or Terrace all Slopes and Piles
 - (2) Erosion Control & Seed Topsoil
 - (3) Erosion Control & Seed Outside
 - (4) Slope away from Substructures Areas 1% to 3% to Flow Control

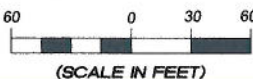
LEGEND

- SLASH
- ST = SEDIMENT TRAP
- SEDR = SEDIMENT RESERVOIR
- R.O.D. = RUN-ON DIVERSION
- PERMETER CONTROL (WATTLIES)
- CSD = CUT SLOPE DIVERSION (BERM TOE OF CUT SLOPE)
- D = FILL DIVERSION TO SEDIMENT TRAP
- VGB = VEGETATION BUFFER (UNDISTURBED LAND INSIDE PC)
- FCD = FLOW CONTROL DITCH
- PARL = PAD/ACCESS ROAD INTERFACE
- LEVEL SPREADER
- TOE BERM (PLACED AT TOE OF ALL FILL SLOPES/STOCKPILES)
- TOPSOIL BERM
- SEED, ECB & FLEX
- SEED

EARTHWORK QUANTITIES (in Cubic Yards w/ 0% shrink/swell)				
ITEM	CUT	FILL	6" TOPSOIL	EXCESS
PAD	11770	10960	Topsoil not included in Excavation	810
PIT	0	0		0
TOTALS	11770	10960	3039	810



906 Main Street
Evanston, Wyoming 82930
Phone No. (307) 789-4545

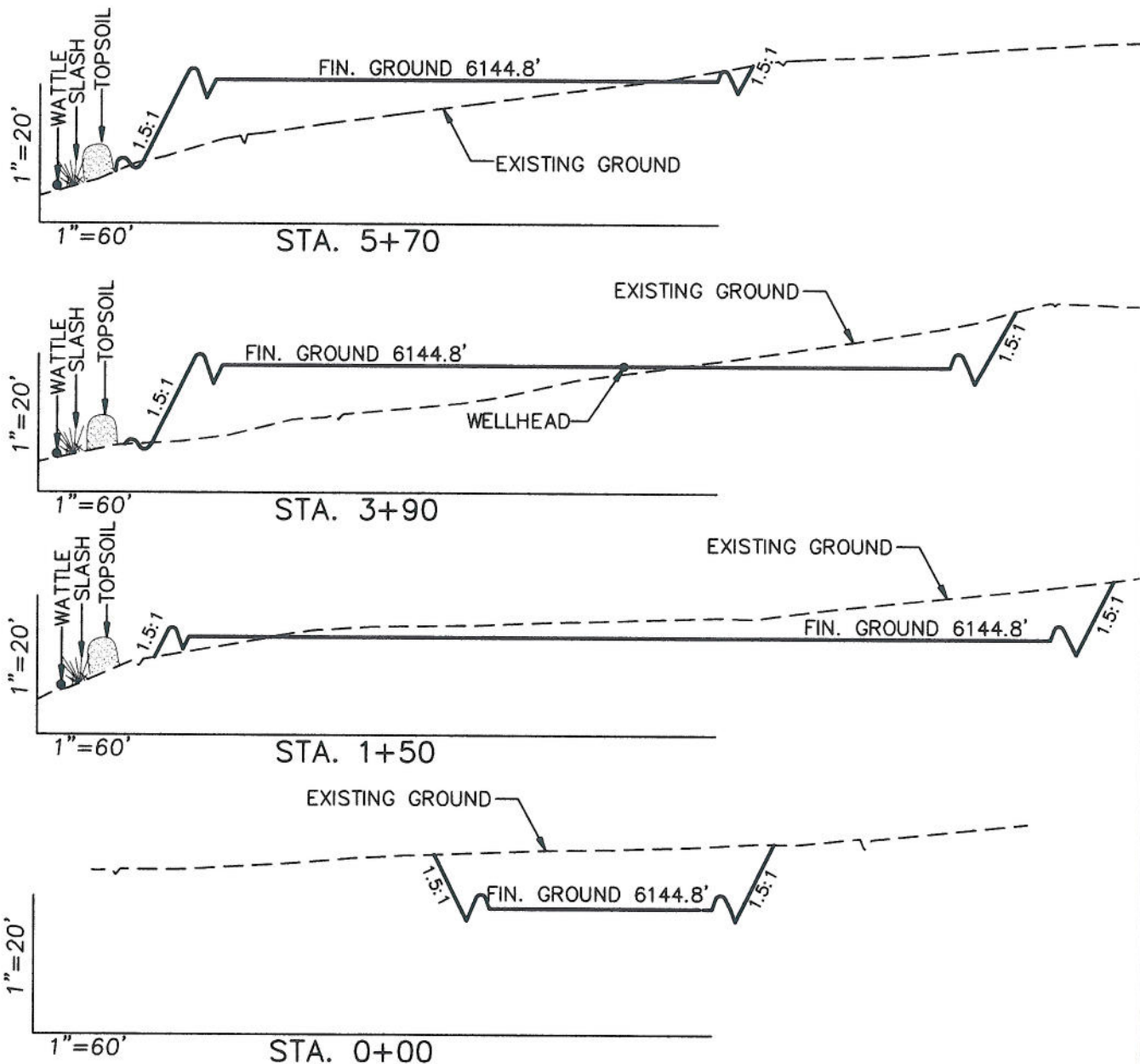


Well Pad Layout		Scale: 1" = 60'		SHEET	
Project No.	08-04-53	Date Surveyed:	08/13/08	3 OF 10	
Date	12/15/09	Latest Revision	1/19/10		
Drawn:		Date:			

EnCana Oil & Gas (USA) Inc.

Well Pad (F12E)

CROSS SECTIONS



SURFACE DISTURBANCE (IN ACRES)

Well Pad	3.4
Side Slopes	0.4
Topsoil & Waste Material	1.56
TOTAL	5.36

NOTE:
ALL CUT AND FILL
SLOPES ARE AT 1.5:1
UNLESS OTHERWISE
NOTED.

EARTHWORK QUANTITIES

(in Cubic Yards w/ 0% shrink/swell)

ITEM	CUT	FILL	6" TOPSOIL	EXCESS
PAD	11770	10960	Topsoil not included in Excavation	810
PIT	0	0		0
TOTALS	11770	10960	3039	810



906 Main Street
Evanston, Wyoming 82930
Phone No. (307) 789-4545

Cross Sections		Scale: As Shown	SHEET
Project No.	08-04-53	Date Surveyed: 08/13/08	4
Date Drawn: 12/15/09		Latest Revision Date: 1/19/10	OF 10