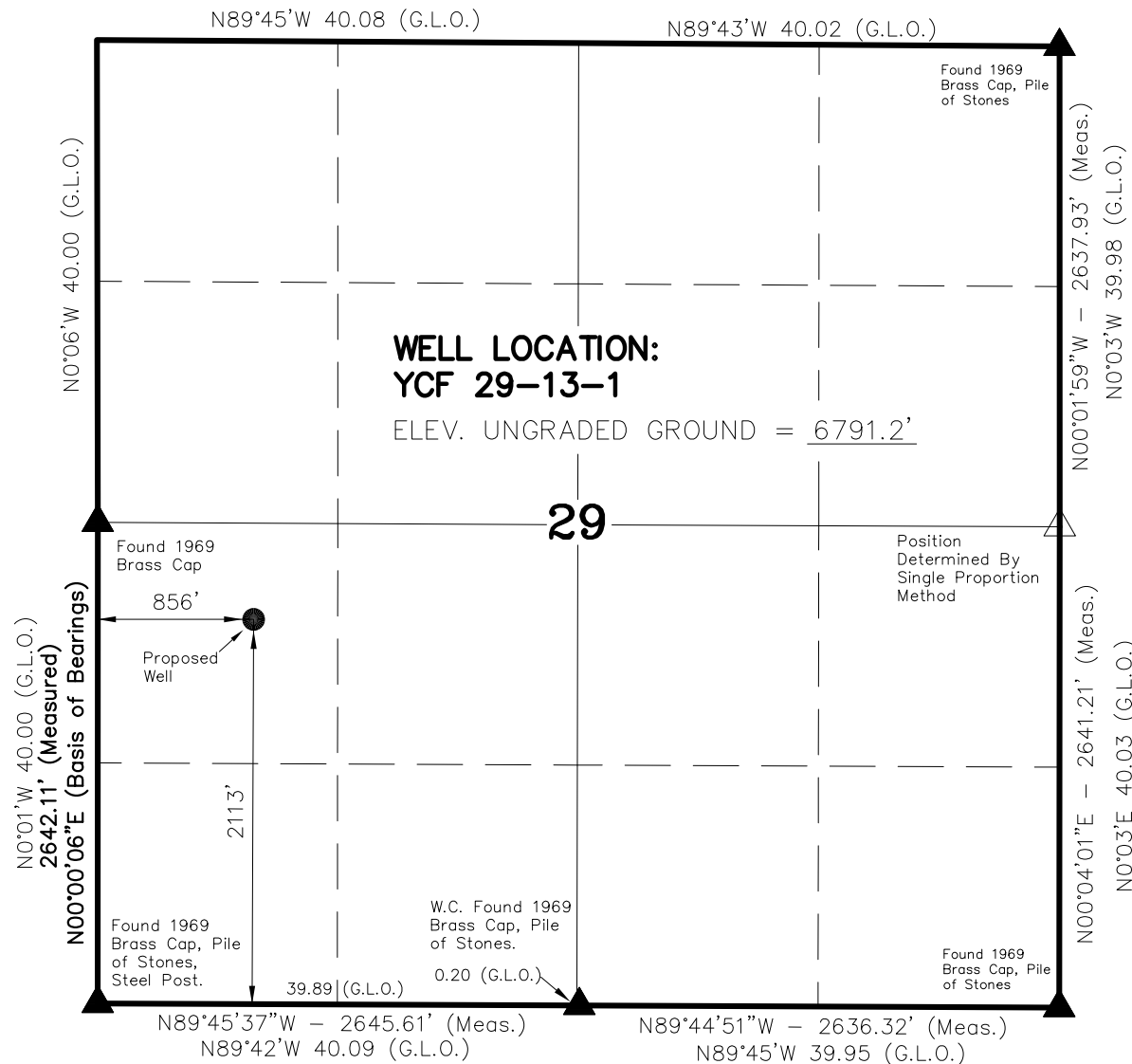
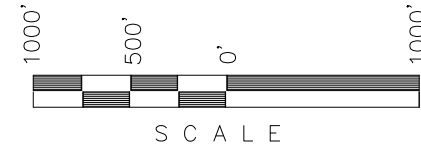


T1N, R98W, 6th P.M.

BOPCO, L.P.



WELL LOCATION, YCF 29-13-1, LOCATED AS SHOWN IN THE NW 1/4 SW 1/4 OF SECTION 29, T1N, R98W, 6th P.M. RIO BLANCO COUNTY, COLORADO.



NOTES:

1. Well footages are measured at right angles to the Section Lines.
2. Bearings are based on Global Positioning Satellite observations.
3. Surface use of location is grazing. Vegetation consists mainly of pinion, cedar, sagebrush and native grasses.
4. See Addendum to Legal Plat for Existing Improvements Within 400' of the Well Pad.

THIS IS TO CERTIFY THAT THE ABOVE PLAT WAS PREPARED FROM FIELD NOTES OF ACTUAL SURVEYS MADE BY ME OR UNDER MY SUPERVISION AND THAT THE SAME ARE TRUE AND CORRECT TO THE BEST OF MY KNOWLEDGE AND BELIEF.

Kelly R. Kay
REGISTERED LAND SURVEYOR
REGISTRATION No. 37982
STATE OF COLORADO

▲ = SECTION CORNERS LOCATED

△ = POSITION DETERMINED BY SINGLE PROPORTION METHOD NOT SET ON GROUND

BASIS OF ELEVATION IS A SPOT ELEVATION AT A ROAD INTERSECTION LOCATED IN THE SW 1/4 NE 1/4 OF SECTION 32, T1N, R98W, 6th P.M. THE ELEVATION OF THIS ROAD INTERSECTION IS MARKED ON THE BARCUS CREEK 7.5 MIN. QUADRANGLE AS BEING 6727'.

YCF 29-13-1

(Proposed Well Head) NAD 83

LATITUDE = 40.02494°N
(40° 01' 29.77"N)
LONGITUDE = 108.42179°W
(108° 25' 18.44"W)

Operator: Brock Slaugh / PDOP = 3.1

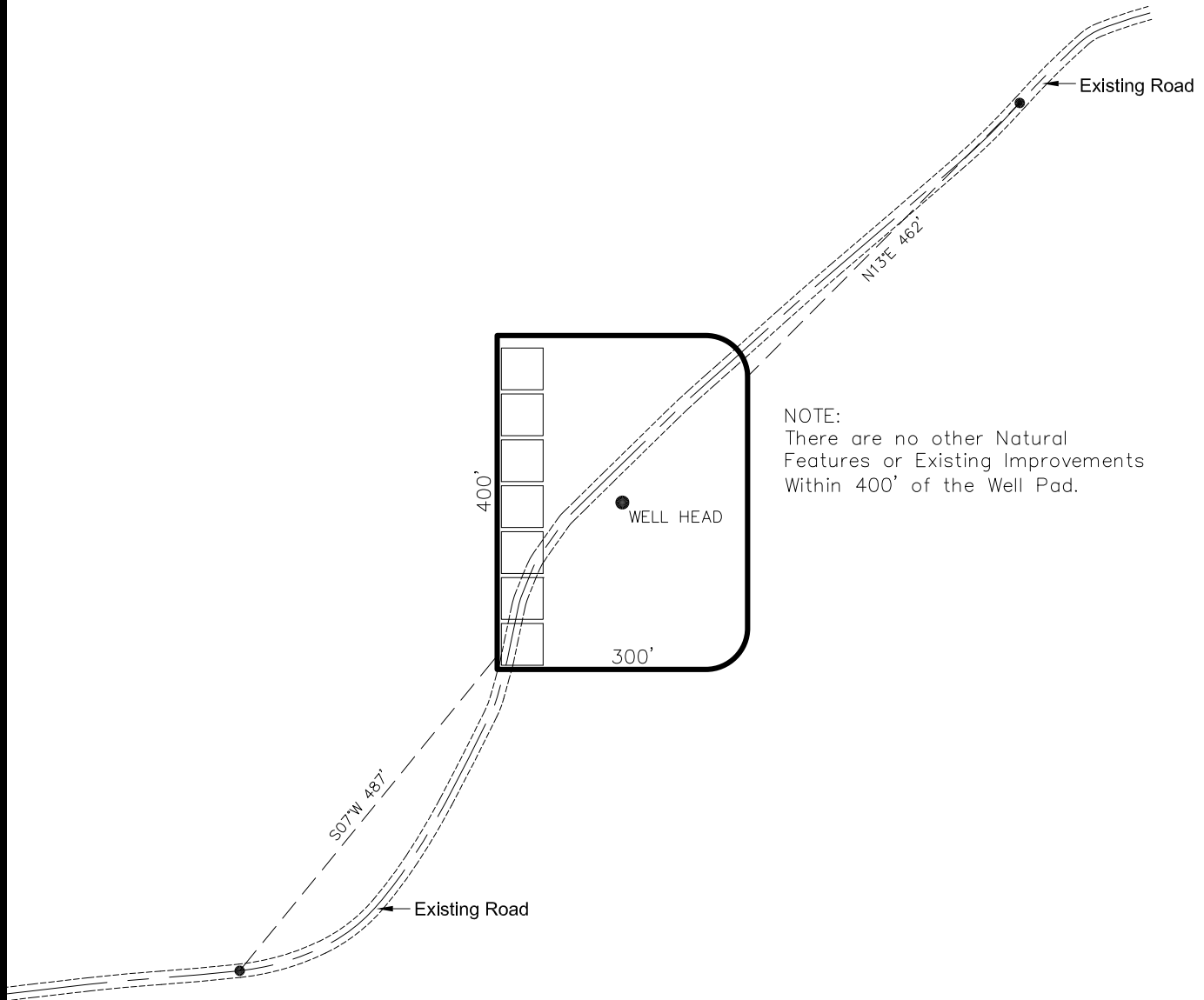
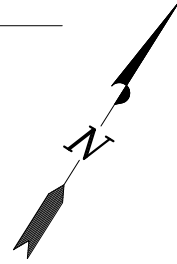
TIMBERLINE LAND SURVEYING, INC.

38 WEST 100 NORTH. - VERNAL, UTAH 84078
(435) 789-1365

DATE SURVEYED: 08-08-06	SURVEYED BY: B.J.S.	SHEET 2a OF 10
DATE DRAWN: 08-14-06	DRAWN BY: M.W.W.	
SCALE: 1" = 1000'	Date Last Revised: 04-21-10 M.W.W.	

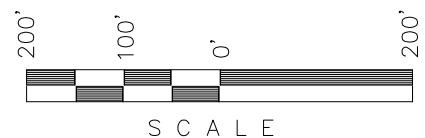
BOPCO, L.P.

ADDENDUM TO LEGAL PLAT YCF 29-13-1



NOTES:

Surface use of location is grazing.
Vegetation consists mainly of pinion,
cedar, sagebrush and native grasses.



Section 29, T1N, R98W, 6th P.M.		Qtr/Qtr Location: NW SW	Footage Location: 2113' FSL & 856' FWL
Date Surveyed: 08-08-06	Date Drawn: 08-15-06	Date Last Revision: 05-04-10 M.W.W.	Timberline <i>Land Surveying, Inc.</i> 38 WEST 100 NORTH VERNAL, UTAH 84078 (435) 789-1365
Surveyed By: B.J.S.	Drawn By: M.W.W.	Scale: 1" = 200'	
			SHEET 2b OF 10