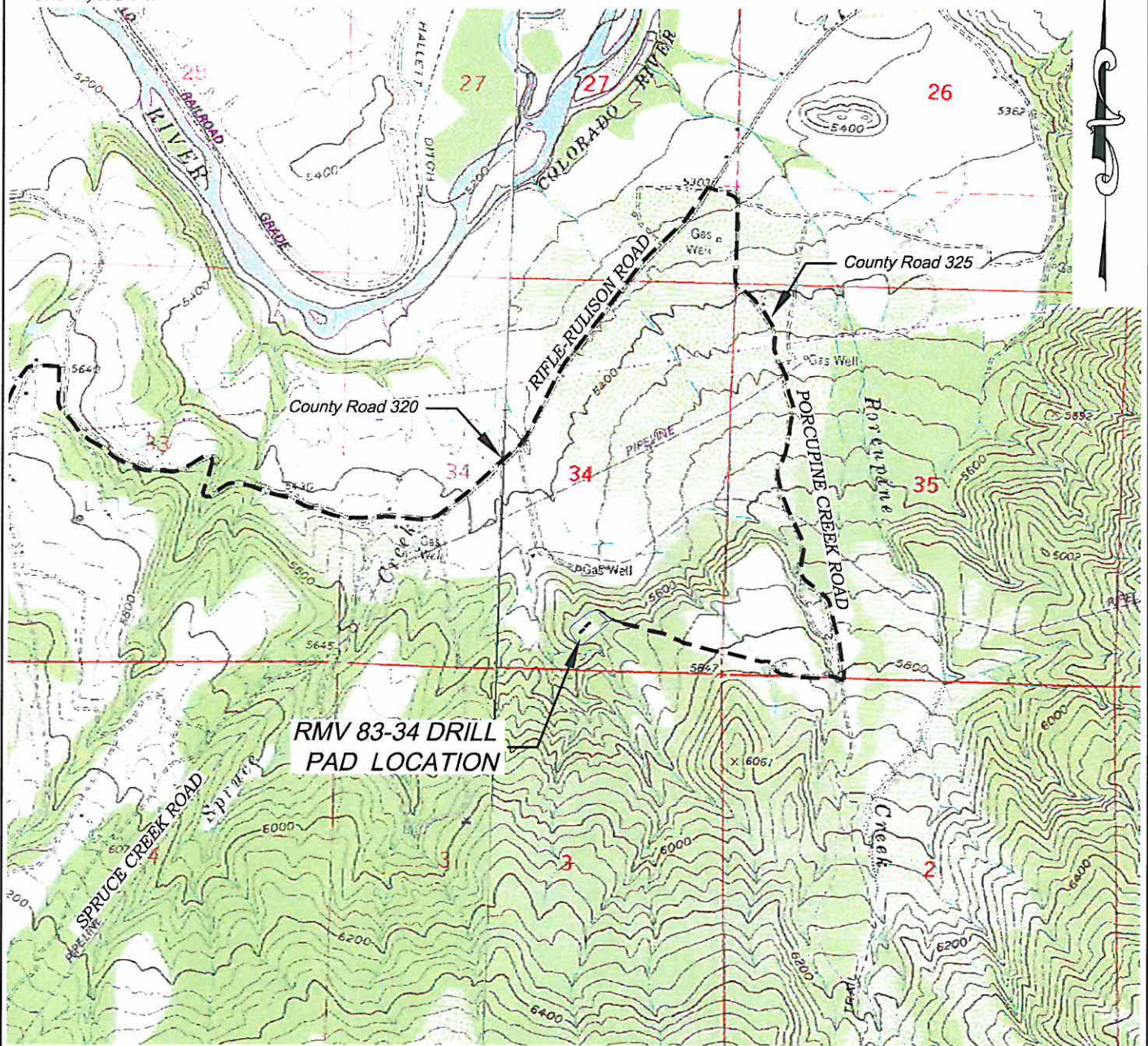


Section 34
T. 6 S., R. 94 W



ACCESS DESCRIPTION:

FROM THE INTERSECTION OF STATE HIGHWAY 6 AND COUNTY ROAD 323 NORTH OF RULISON, PROCEED SOUTHERLY ALONG COUNTY ROAD 323 ± 1.1 MILES TO THE INTERSECTION WITH COUNTY ROAD 309, PROCEED LEFT IN AN EASTERLY DIRECTION ± 2.3 MILES TO THE INTERSECTION WITH COUNTY ROAD 320, PROCEED RIGHT IN AN EASTERLY DIRECTION ± 2.4 MILE TO THE INTERSECTION WITH COUNTY ROAD 325, PROCEED RIGHT IN A SOUTHERLY DIRECTION ± 1.4 MILES TO THE INTERSECTION WITH A DIRT/GRAVEL ROAD, PROCEED RIGHT IN AN EASTERLY DIRECTION ± 0.6 MILES TO THE EXISTING RMV 83-34 DRILL PAD LOCATION, AS SHOWN HEREON.

Construction Plan Prepared for:

Williams Williams Production, RMT

*RMV 83-34 Drill Pad - Plat 5
ACCESS ROAD MAP*

136 East Third Street
Rifle, Colorado 81650
Ph. (970) 625-1330
Fax (970) 625-2773

BOOKCLIFF
Survey Services, Inc.

SCALE: 1" = 2000'
DATE: 4/27/10
PLAT: 5 of 9
PROJECT: Williams
DFT: DPM