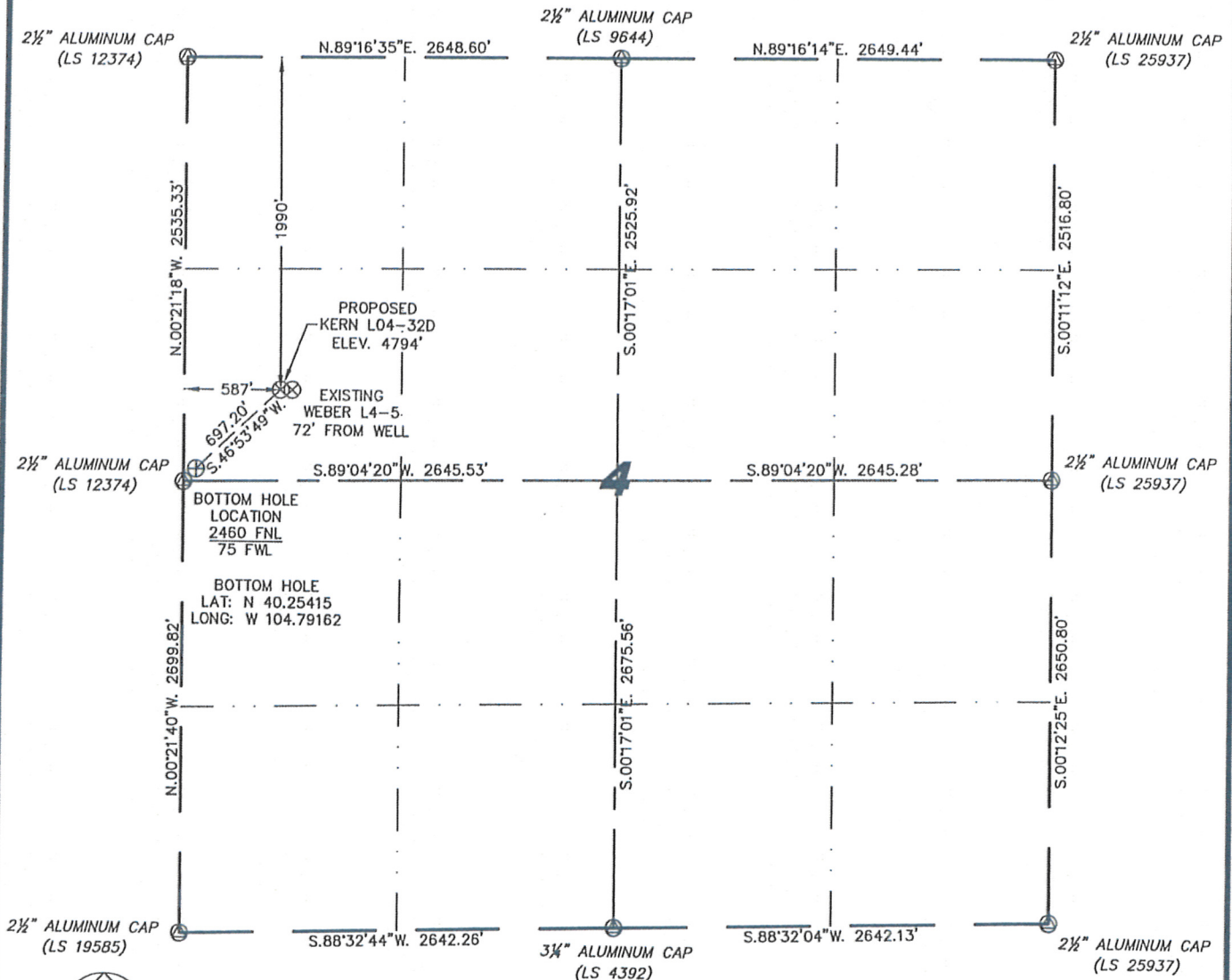


Cheyenne, Wyoming 82009

# WELL LOCATION CERTIFICATE

THIS MAP DOES NOT REPRESENT A BOUNDARY SURVEY

SECTION 4  
TOWNSHIP 3 NORTH  
RANGE 66 WEST



0 1000

Scale:  $1'' = 1000'$

IN ACCORDANCE WITH A REQUEST FROM JOE MARTIN - NOBLE ENERGY INC, STEEL SURVEYING SERVICES, LLC HAS DETERMINED THE LOCATION OF THE KERN L04-32D WELL TO BE 1990' FNL, 587' FWL, AS MEASURED AT NINETY (90) DEGREES FROM THE SECTION LINES, SECTION 4, TOWNSHIP 3 NORTH, RANGE 66 WEST, 6TH PRINCIPLE MERIDIAN, WELD COUNTY, COLORADO.

I HEREBY CERTIFY THAT THIS WELL LOCATION CERTIFICATE WAS PREPARED BY ME, OR UNDER MY DIRECT SUPERVISION, THAT THE FIELD WORK WAS COMPLETED ON 12/02/2009, FOR AND ON BEHALF OF NOBLE ENERGY INC, THAT IT IS NOT A LAND SURVEY PLAT OR AN IMPROVEMENT SURVEY PLAT, AND THAT IT IS NOT TO BE RELIED UPON FOR ESTABLISHMENT OF FENCE, BUILDING, OR OTHER FUTURE IMPROVEMENT LINES.

LATITUDE & LONGITUDE (NAD 83 SURFACE HOLE):

LATITUDE: N 40.25545°  
LONGITUDE: W 104.78978°

PDOP: 1.8

QUARTER-QUARTER: SW/4NW/4

NEAREST PROPERTY LINE: 270'+/- TO THE NORTH

NOTES:

- 1) BASIS OF BEARINGS FOR THIS MAP ARE BASED UPON GPS OBSERVATIONS  
MADE ON 12/02/2009 BETWEEN MONUMENTS LOCATED AT THE SOUTHEAST  
SECTION CORNER AND THE NORTHEAST SECTION CORNER OF SAID SECTION  
AND WITH ALL BEARINGS SHOWN HEREON RELATIVE THERETO.
- 2) ELEVATIONS ARE BASED UPON NGS OPUS SOLUTION NAVD 83 DATUM.
- 3) THE NEAREST EXISTING WELL IS: WELLS L4-5, 72' EAST.
- 4) SEE VISIBLE IMPROVEMENTS EXHIBIT FOR ALL IMPROVEMENTS WITHIN 400'.
- 5) THE LOCATION FALLS IN IRRIGATED CROP LAND.

### LEGEND

- (C) CALCULATED DIMENSION

NOTICE: According to Colorado law you MUST commence any legal action based upon any defect in this W.L.C. within three years after you first discover such defect. In no event may any action based upon any defect in this W.L.C. be commenced more than ten years from this sold date of the certification shown hereon.

Completed 12/08/2009

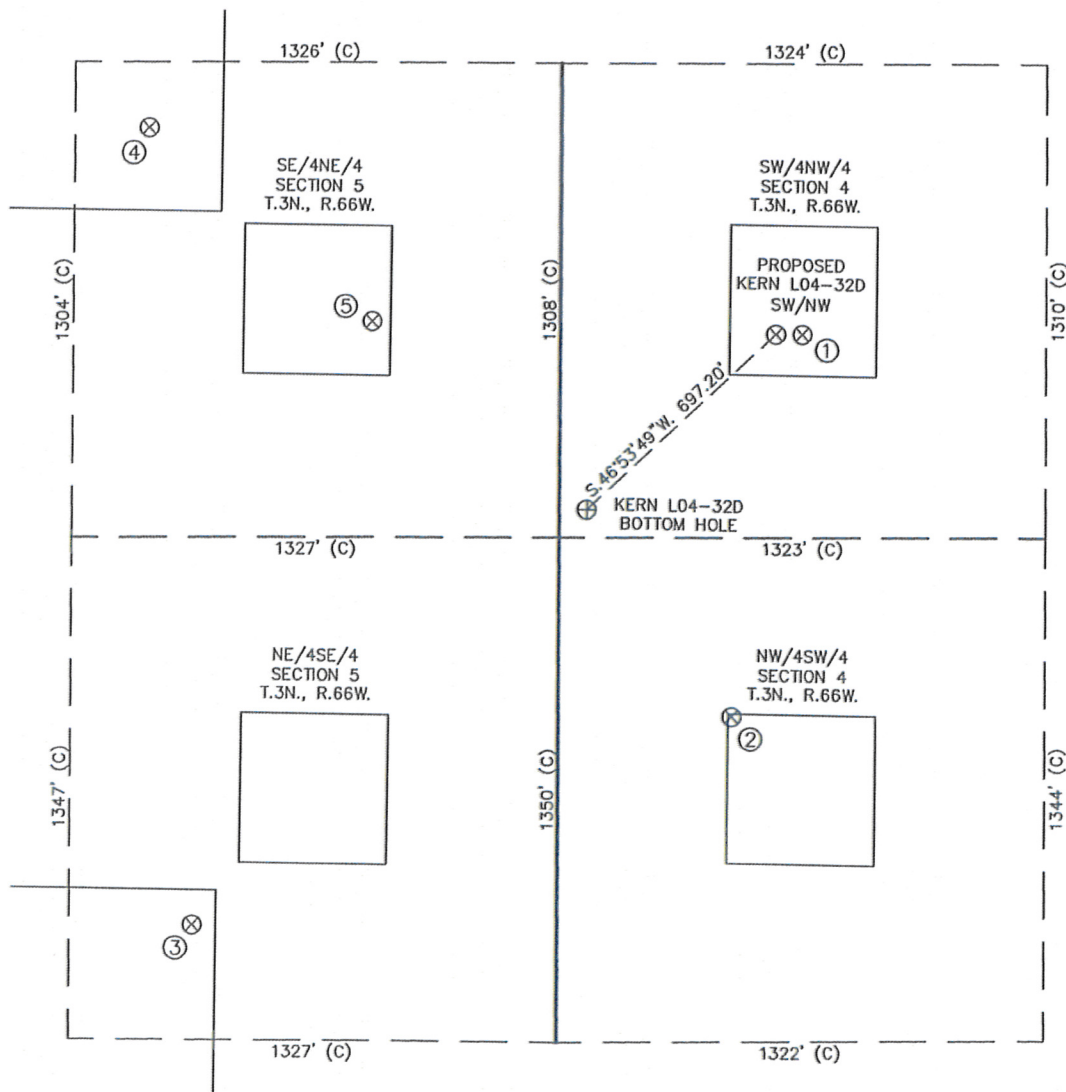
David C. Holmes  
Professional Land Surveyor Registration No. 32828  
State of Colorado

JOB #: 09086



# SITE SKETCH - KERN L04-32D

SECTION 4  
TOWNSHIP 3 NORTH  
RANGE 66 WEST



①	②	③	④	⑤
WEBER L4-5 SW/NW SEC. 4 1990' FNL 659' FWL EL 4794' N 40.25545 W 104.78952 PDOP 2.1	KERN L4-12 NW/SW SEC. 4 2216' FSL 472' FWL EL 4796' N 40.25264 W 104.79020 PDOP 2.4	HSR-CRAWFORD 9-5 NE/SE SEC. 5 1649' FSL 991' FEL EL 4789' N 40.25107 W 104.79544 PDOP 3.2	CHAMPLIN 203 AMOCO A 1 SE/NE SEC. 5 1446' FNL 1124' FEL EL 4783' N 40.25692 W 104.79590 PDOP 1.8	HSR-COLEMAN 8-5 SE/NE SEC. 5 1961' FNL 513' FEL EL 4786' N 40.25551 W 104.79372 PDOP 2.9

## NOTES:

- THIS SKETCH DOES NOT REPRESENT A BOUNDARY SURVEY.
- THE DATUM FOR THE LATITUDES AND LONGITUDES ON THIS SKETCH IS NAD83.

