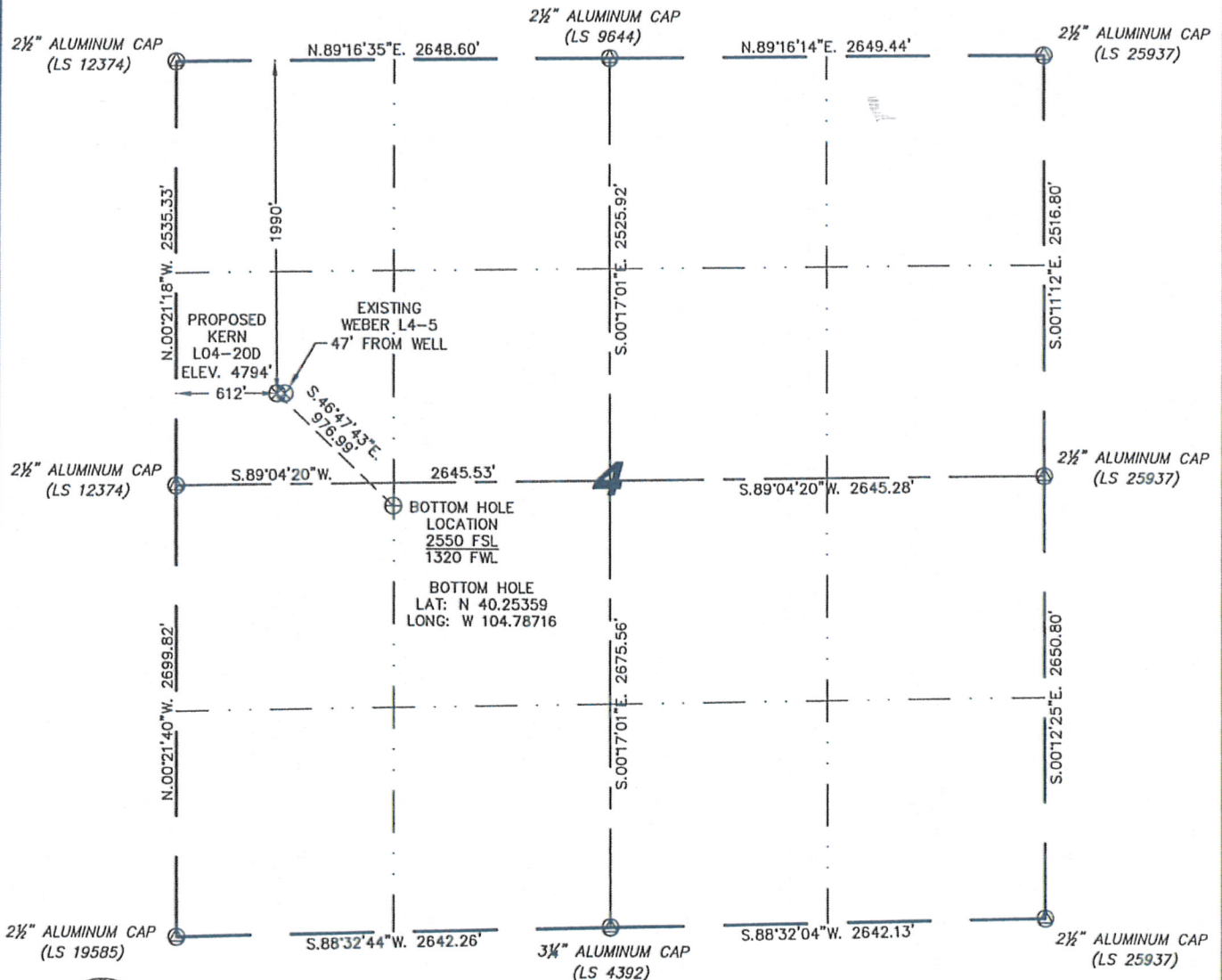


Steil Surveying Services, LLC

1102 West 19th Street P.O. BOX 2073
WELL LOCATION CERTIFICATE
THIS MAP DOES NOT REPRESENT A BOUNDARY SURVEY

Cheyenne, Wyoming 82009

SECTION 4
TOWNSHIP 3 NORTH
RANGE 66 WEST



0 1000

Scale: 1" = 1000'

IN ACCORDANCE WITH A REQUEST FROM JOE MARTIN - NOBLE ENERGY INC., STEIL SURVEYING SERVICES, LLC HAS DETERMINED THE LOCATION OF THE KERN L04-20D WELL TO BE 1990' FNL, 612' FWL, AS MEASURED AT NINETY (90) DEGREES FROM THE SECTION LINES, SECTION 4, TOWNSHIP 3 NORTH, RANGE 66 WEST, 6TH PRINCIPLE MERIDIAN, WELD COUNTY, COLORADO.

I HEREBY CERTIFY THAT THIS WELL LOCATION CERTIFICATE WAS PREPARED BY ME, OR UNDER MY DIRECT SUPERVISION, THAT THE FIELD WORK WAS COMPLETED ON 12/02/2009, FOR AND ON BEHALF OF NOBLE ENERGY INC., THAT IT IS NOT A LAND SURVEY PLAT OR AN IMPROVEMENT SURVEY PLAT, AND THAT IT IS NOT TO BE RELIED UPON FOR ESTABLISHMENT OF FENCE, BUILDING, OR OTHER FUTURE IMPROVEMENT LINES.

NOTES:

- 1) BASIS OF BEARINGS FOR THIS MAP ARE BASED UPON GPS OBSERVATIONS MADE ON 12/02/2009 BETWEEN MONUMENTS LOCATED AT THE SOUTHEAST SECTION CORNER AND THE NORTHEAST SECTION CORNER OF SAID SECTION AND WITH ALL BEARINGS SHOWN HEREON RELATIVE THERETO.
- 2) ELEVATIONS ARE BASED UPON NGS OPUS SOLUTION NAVD 88 DATUM.
- 3) THE NEAREST EXISTING WELL IS: WEBER L4-5, 47' EAST.
- 4) SEE VISIBLE IMPROVEMENTS EXHIBIT FOR ALL IMPROVEMENTS WITHIN 400'.
- 5) THE LOCATION FALLS IN IRRIGATED CROP LAND.

LATITUDE & LONGITUDE (NAD 83 SURFACE HOLE):
LATITUDE: N 40.25545°
LONGITUDE: W 104.78969°
PDOP: 1.8
QUARTER-QUARTER: SW/4NW/4
NEAREST PROPERTY LINE: 270'+/- TO THE NORTH

LEGEND

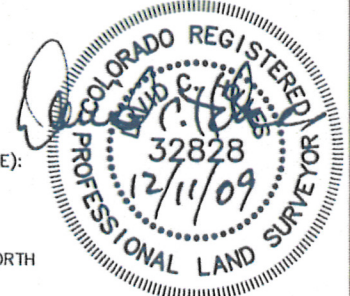
- (A) FOUND SURVEY MONUMENT PER MONUMENT RECORD - EXCEPTIONS NOTED.
- (C) CALCULATED DIMENSION

NOTICE: According to Colorado law you MUST commence any legal action based upon any defect in this W.L.C. within three years after you first discover such defect. In no event may any action based upon any defect in this W.L.C. be commenced more than ten years from this said date of the certification shown hereon.

David C. Holmes
Professional Land Surveyor Registration No. 32828
State of Colorado

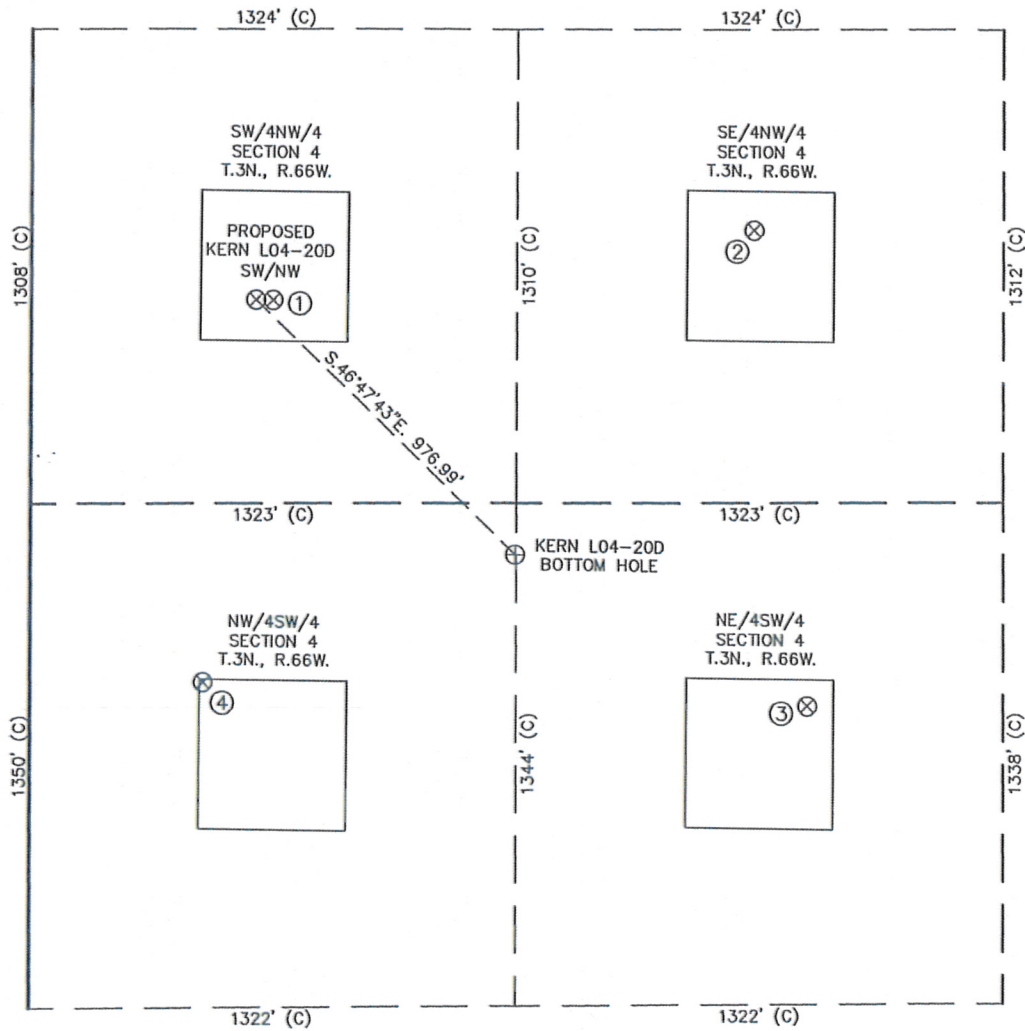
JOB #: 09086

Completed 12/08/2009



SITE SKETCH - KERN L04-20D

SECTION 4
TOWNSHIP 3 NORTH
RANGE 66 WEST



①	②	③	④
WEBER L4-5 SW/NW SEC. 4 1990' FNL 659' FWL EL 4794' N 40.25545 W 104.78952 PDOP 2.1	WEBBER L4-6 SE/NW SEC. 4 1801' FNL 1968' FWL EL 4803' N 40.25598 W 104.78483 PDOP 1.9	KERN L4-11 NE/SW SEC. 4 2136' FSL 2114' FWL EL 4809' N 40.25250 W 104.78432 PDOP 2.4	KERN L4-12 NW/SW SEC. 4 2216' FSL 472' FWL EL 4796' N 40.25264 W 104.79020 PDOP 2.4

NOTES:

- THIS SKETCH DOES NOT REPRESENT A BOUNDARY SURVEY.
- THE DATUM FOR THE LATITUDES AND LONGITUDES ON THIS SKETCH IS NAD83.

