

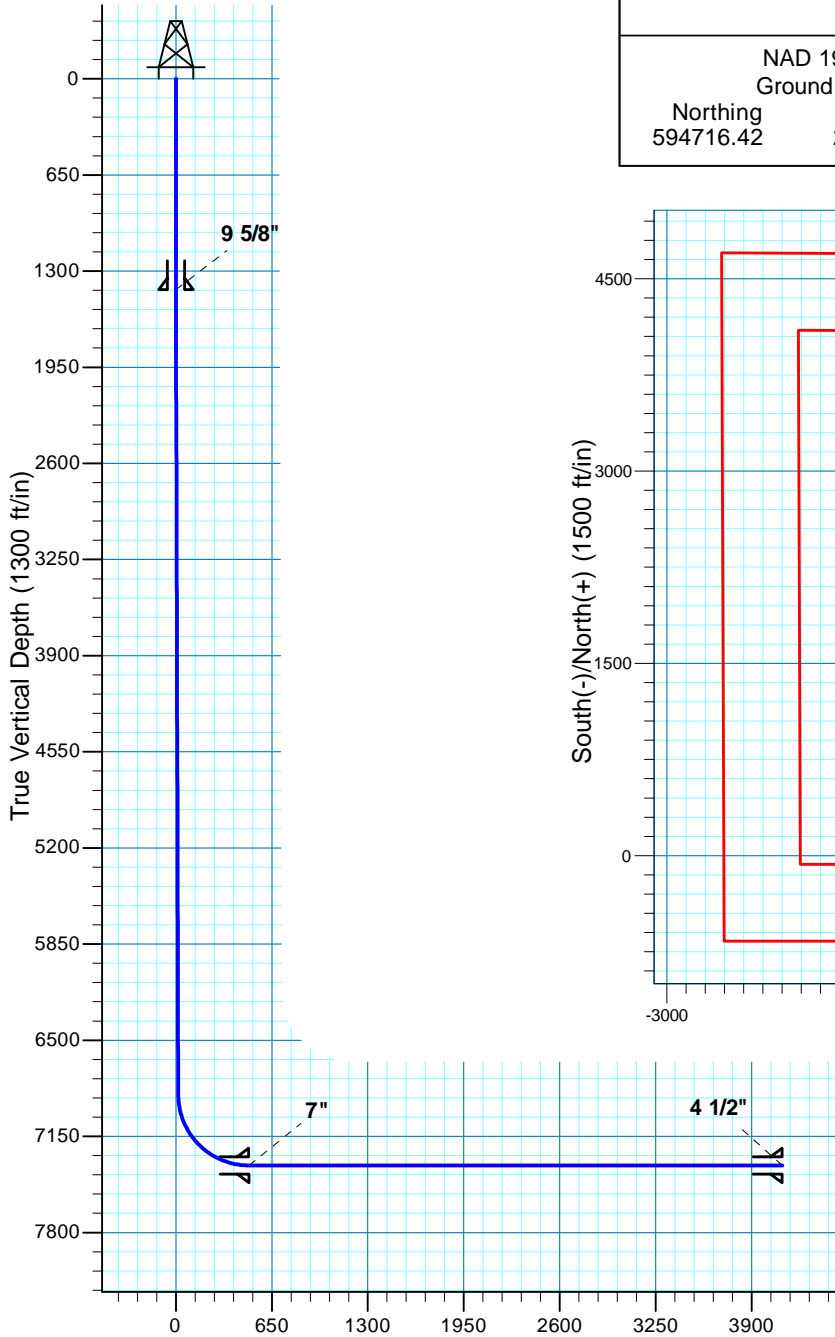
Longhorn B5-36H

Section 36 T12N R63W

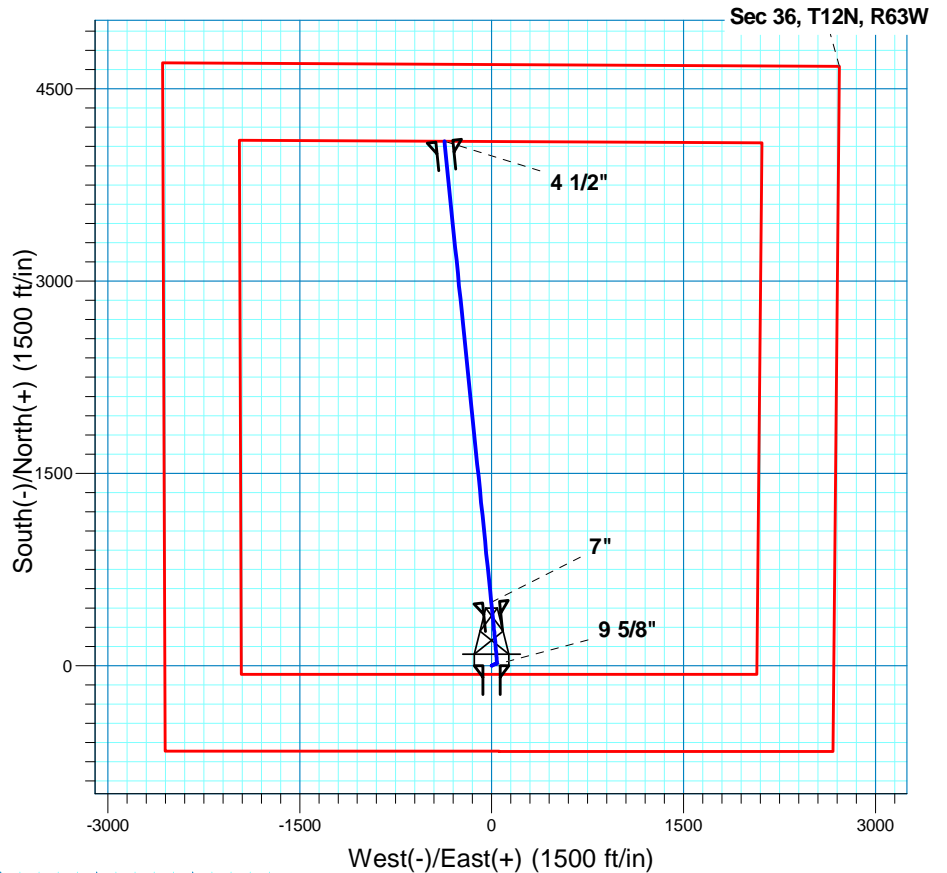
Weld County, CO



Surface Location			
NAD 1927 (NADCON CONUS) Colorado North 501			
Ground Elevation: 5343.0 RIG @ 5364.0ft (SST 56)			
Northing	Easting	Latitude	Longitude
594716.42	2309075.33	40° 57' 37.919 N	104° 22' 51.611 W



Vertical Section at 354.85° (1300 ft/in)



T M
 Azimuths to True North
 Magnetic North: 8.83°
 Magnetic Field
 Strength: 53606.0snT
 Dip Angle: 67.62°
 Date: 3/29/2010
 Model: IGRF200510

Project: DJ - Hereford Ranch
 Site: Longhorn B5-36H
 Well: Longhorn B5-36H
 Plan: APD

SECTION DETAILS

Sec	MD	Inc	Azi	TVD	+N/-S	+E/-W	DLeg	TFace	VSec	Target
1	0.0	0.00	0.00	0.0	0.0	0.0	0.00	0.00	0.0	
2	1500.0	0.00	0.00	1500.0	0.0	0.0	0.00	0.00	0.0	
3	1550.0	0.50	65.00	1550.0	0.1	0.2	1.00	65.00	0.1	
4	6870.1	0.50	65.00	6869.9	19.7	42.3	0.00	0.00	15.8	
5	7618.8	90.00	354.18	7346.0	495.1	-2.3	12.00	-70.82	493.3	
6	11233.3	90.00	354.18	7346.0	4091.0	-369.0	0.00	0.00	4107.6	Longhorn B5-36H (BHL)

TARGET DETAILS

Name	TVD	+N/-S	+E/-W	Northing	Easting	Latitude	Longitude	Shape
Longhorn B5-36H (BHL)	7346.0	4091.0	-369.0	598802.41	2308654.78	40° 58' 18.340 N	104° 22' 56.420 W	Circle (Radius: 100.0)