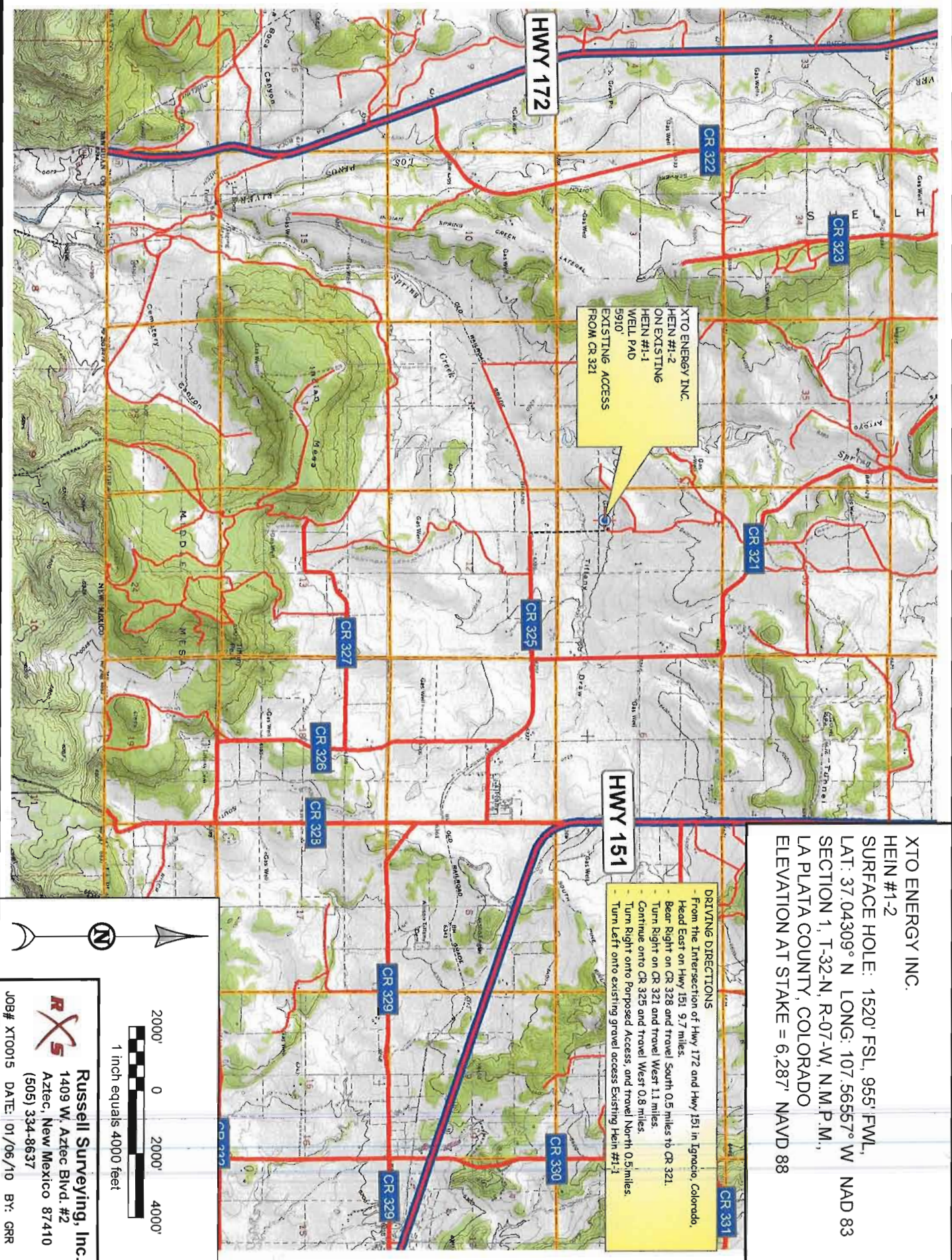


XTO ENERGY INC.
 HEIN #1-2
 SURFACE HOLE: 1520' FSL, 955' FWL,
 LAT: 37.04309° N LONG: 107.56557° W NAD 83
 SECTION 1, T-32-N, R-07-W, N.M.P.M.,
 LA PLATA COUNTY, COLORADO
 ELEVATION AT STAKE = 6,287' NAVD 88

DRIVING DIRECTIONS
 - From the Intersection of Hwy 172 and Hwy 151 in Ignacio, Colorado,
 Head East on Hwy 151 9.7 miles.
 - Bear Right on CR 328 and travel South 0.5 miles to CR 321.
 - Turn Right on CR 321 and travel West 1.1 miles.
 - Continue onto CR 325 and travel West 0.8 miles.
 - Turn Right onto Proposed Access, and travel North 0.5 miles.
 - Turn Left onto existing gravel access Existing Hein #1-1.

XTO ENERGY INC.
 HEIN #1-2
 ON EXISTING
 HEIN #1-1
 WELL PAD
 5910'
 EXISTING ACCESS
 FROM CR 321



2000' 0 2000' 4000'

1 inch equals 4000 feet

Russell Surveying, Inc.
 1409 W. Aztec Blvd. #2
 Aztec, New Mexico 87410
 (505) 334-8637

JOB# XT0015 DATE: 01/06/10 BY: GRR