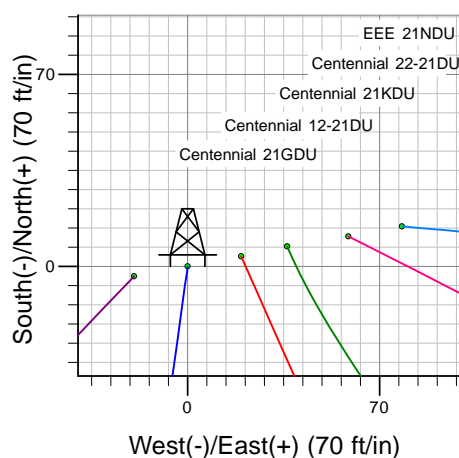
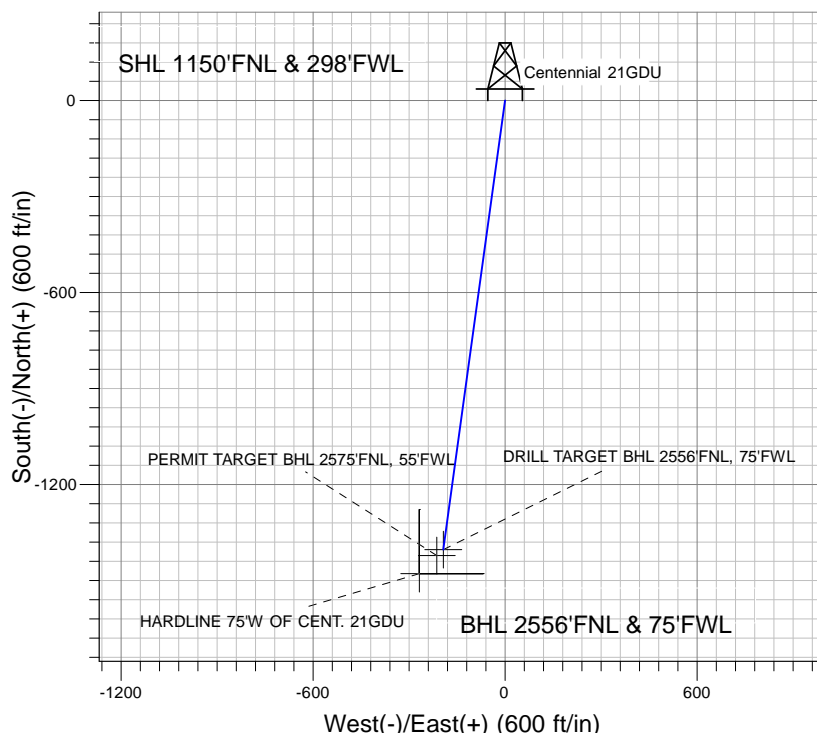
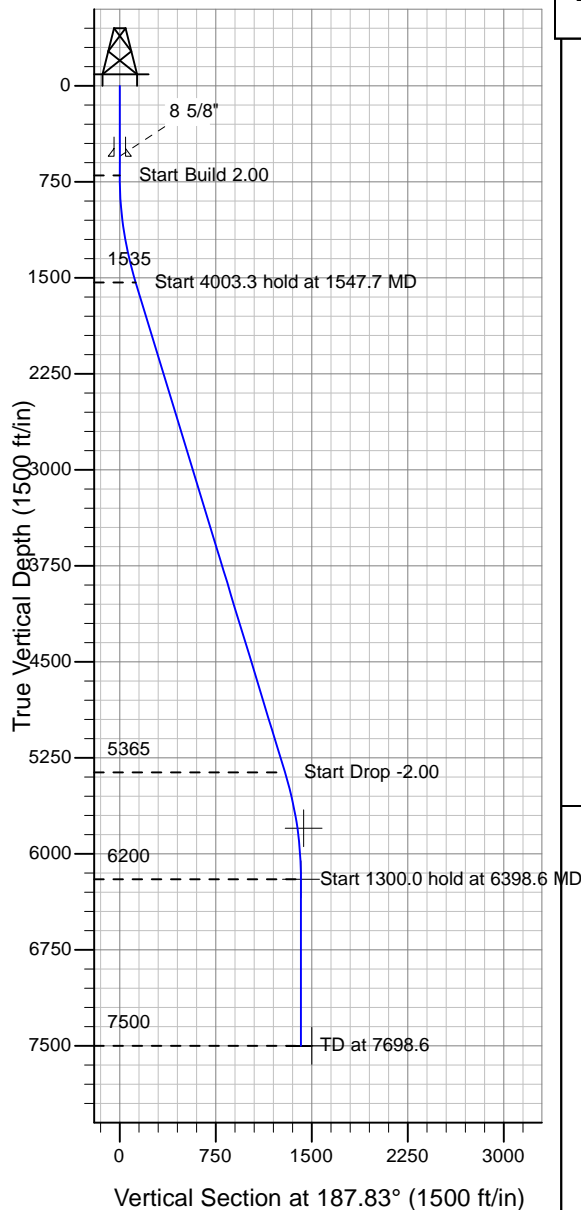


Well Name: Centennial 21GDU

Surface Location: EEE/Ryland 20SD Pad Sec.21-T4N-R67W
 North American Datum 1983 , US State Plane 1983 , Colorado Northern Zone
 Ground Elevation: 4922.0

+N/-S+E/-W Northing Easting Latitude Longitude Slot
 0.0 0.0 1353588.47 3166076.32 40° 18' 8.892 N 104° 54' 16.380 W
 Original Well Elev WELL @ 4935.0ft (Original Well Elev)

PETROLEUM DEVELOPMENT CORP Weld County CO



EEE/Ryland 20SD Pad Sec.21-T4N-R67W
 Centennial 21GDU
 Plan #1 (3-8-10)
 12:34, March 12 2010



Azimuths to True North
 Magnetic North: 9.09°
 Magnetic Field
 Strength: 53237.0nT
 Dip Angle: 67.01°
 Date: 12/31/2009
 Model: IGRF200510

WELLBORE TARGET DETAILS (LAT/LONG)

| Name | TVD | +N/-S | +E/-W | Latitude | Longitude | Shape |
|------------------------------------|--------|---------|--------|------------------|-------------------|---------|
| PERMIT TARGET BHL 2575'FNL, 55'FWL | 5800.0 | -1422.1 | -213.0 | 40° 17' 54.839 N | 104° 54' 19.130 W | Point |
| DRILL TARGET BHL 2556'FNL, 75'FWL | 6200.0 | -1403.1 | -193.0 | 40° 17' 55.027 N | 104° 54' 18.871 W | Point |
| HARDLINE 75'W OF CENT. 21GDU | 7500.0 | -1478.1 | -268.0 | 40° 17' 54.286 N | 104° 54' 19.839 W | Polygon |

SECTION DETAILS

| Sec | MD | Inc | Azi | TVD | +N/-S | +E/-W | DLeg | TFace | VSec | Target |
|-----|--------|-------|--------|--------|---------|--------|------|--------|--------|-----------------------------------|
| 1 | 0.0 | 0.00 | 0.00 | 0.0 | 0.0 | 0.0 | 0.00 | 0.00 | 0.0 | |
| 2 | 700.0 | 0.00 | 0.00 | 700.0 | 0.0 | 0.0 | 0.00 | 0.00 | 0.0 | |
| 3 | 1547.7 | 16.95 | 187.83 | 1535.4 | -123.3 | -17.0 | 2.00 | 187.83 | 124.5 | |
| 4 | 5550.9 | 16.95 | 187.83 | 5364.6 | -1279.8 | -176.0 | 0.00 | 0.00 | 1291.8 | |
| 5 | 6398.6 | 0.00 | 0.00 | 6200.0 | -1403.1 | -193.0 | 2.00 | 180.00 | 1416.3 | DRILL TARGET BHL 2556'FNL, 75'FWL |
| 6 | 7698.6 | 0.00 | 0.00 | 7500.0 | -1403.1 | -193.0 | 0.00 | 0.00 | 1416.3 | |