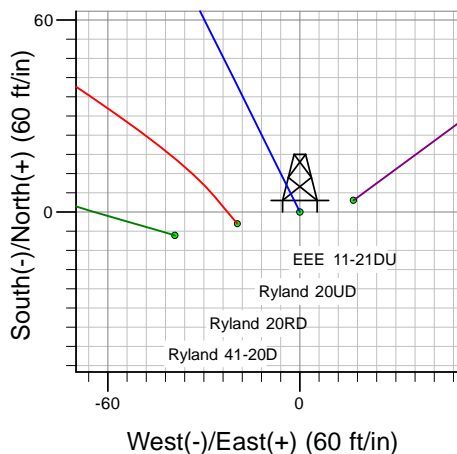
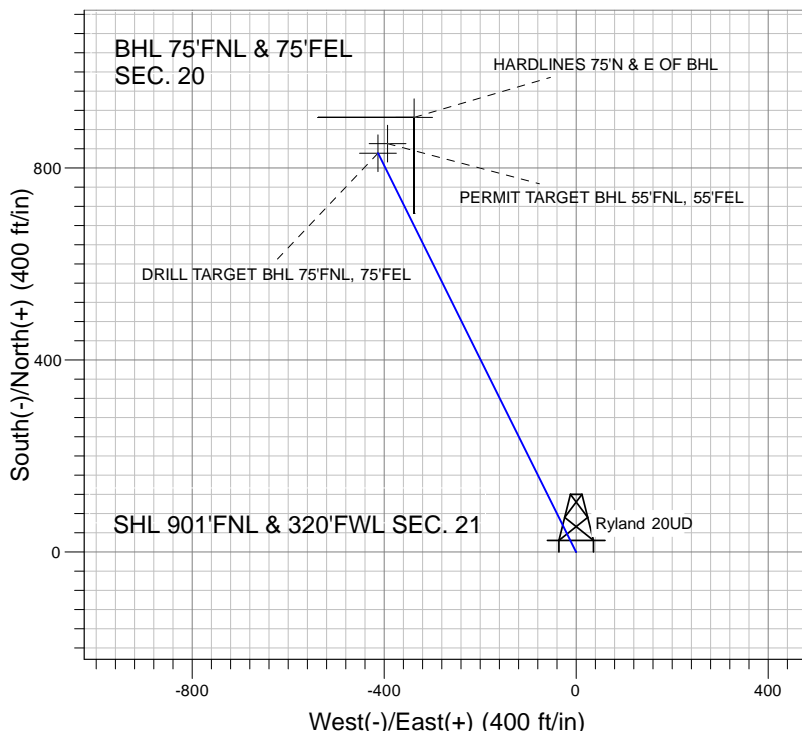
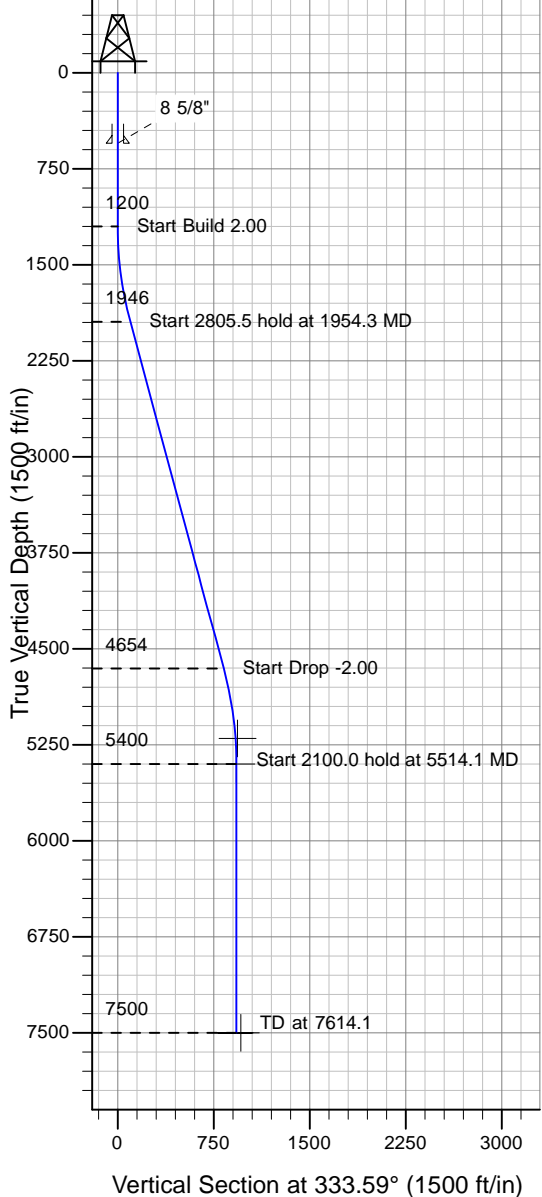


Well Name: Ryland 20UD

Surface Location: EEE/Ryland 41-20D Pad Sec.21-T4N-R67W
 North American Datum 1983 , US State Plane 1983 , Colorado Northern Zone
 Ground Elevation: 4922.0

+N/-S+E/-W Northing Easting Latitude Longitude Slot
 0.0 0.0 1353843.56 3166088.56 40° 18' 11.412 N 104° 54' 16.200 W
 Original Well Elev WELL @ 4935.0ft (Original Well Elev)

PETROLEUM DEVELOPMENT CORP Weld County CO



EEE/Ryland 41-20D Pad Sec.21-T4N-R67W
 Ryland 20UD
 Plan #1 (3-5-10)
 14:36, March 11 2010



Azimuths to True North
 Magnetic North: 9.09°
 Magnetic Field
 Strength: 53237.4snT
 Dip Angle: 67.01°
 Date: 12/31/2009
 Model: IGRF200510

WELLBORE TARGET DETAILS (LAT/LONG)

Name	TVD	+N/-S	+E/-W	Latitude	Longitude	Shape
PERMIT TARGET BHL 55'FNL, 55'FEL	5200.0	850.8	-392.6	40° 18' 19.819 N	104° 54' 21.267 W	Point
DRILL TARGET BHL 75'FNL, 75'FEL	5400.0	830.8	-412.6	40° 18' 19.622 N	104° 54' 21.526 W	Point
HARDLINES 75'N & E OF BHL	7500.0	905.8	-337.6	40° 18' 20.363 N	104° 54' 20.558 W	Polygon

SECTION DETAILS

Sec	MD	Inc	Azi	TVD	+N/-S	+E/-W	DLeg	TFace	VSec	Target
1	0.0	0.00	0.00	0.0	0.0	0.0	0.00	0.00	0.0	
2	1200.0	0.00	0.00	1200.0	0.0	0.0	0.00	0.00	0.0	
3	1954.3	15.09	333.59	1945.6	88.4	-43.9	2.00	333.59	98.7	
4	4759.8	15.09	333.59	4654.4	742.4	-368.7	0.00	0.00	828.9	
5	5514.1	0.00	0.00	5400.0	830.8	-412.6	2.00	180.00	927.6	DRILL TARGET BHL 75'FNL, 75'FEL
6	7614.1	0.00	0.00	7500.0	830.8	-412.6	0.00	0.00	927.6	