

# ENSIGN

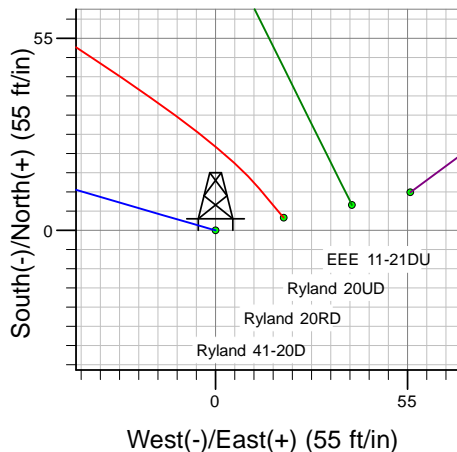
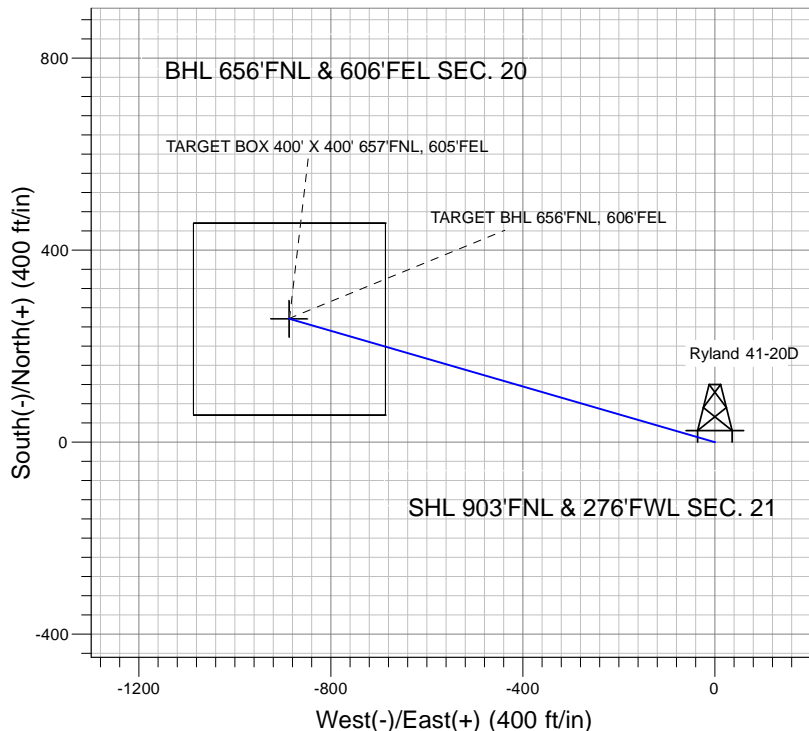
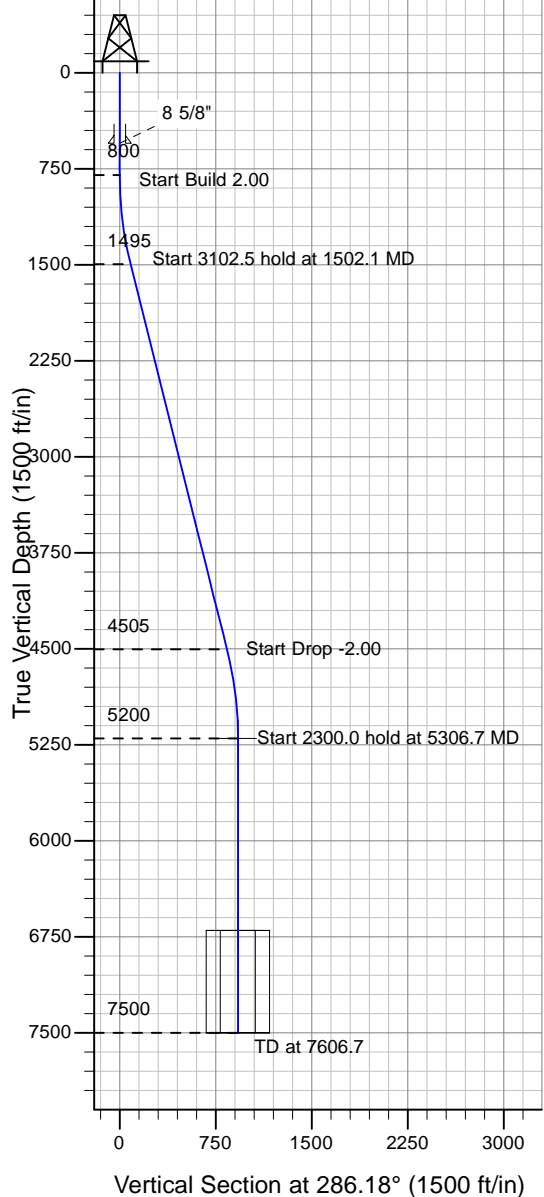
## Directional

### Well Name: Ryland 41-20D

Surface Location: EEE/Ryland 41-20D Pad Sec.21-T4N-R67W  
 North American Datum 1983 , US State Plane 1983 , Colorado Northern Zone  
 Ground Elevation: 4922.0

+N/-S+E/-W Northing Easting Latitude Longitude Slot  
 0.0 0.01353836.01 3166049.56 40° 18' 11.340 N 104° 54' 16.704 W  
 Original Well Elev WELL @ 4935.0ft (Original Well Elev)

### PETROLEUM DEVELOPMENT CORP Weld County CO



EEE/Ryland 41-20D Pad Sec.21-T4N-R67W  
 Ryland 41-20D  
 Plan #1 (3-5-10)  
 12:35, March 11 2010



Azimuths to True North  
 Magnetic North: 9.09°  
 Magnetic Field  
 Strength: 53237.4snT  
 Dip Angle: 67.01°  
 Date: 12/31/2009  
 Model: IGRF200510

#### WELLBORE TARGET DETAILS (LAT/LONG)

Name	TVD	+N/-S	+E/-W	Latitude	Longitude	Shape
TARGET BHL 656'FNL, 606'FEL	5200.0	257.5	-887.4	40° 18' 13.884 N	104° 54' 28.158 W	Point
TARGET BOX 400' X 400' 657'FNL, 605'FEL	6700.0	256.5	-886.4	40° 18' 13.874 N	104° 54' 28.145 W	Rectangle (Sides: L400.0 W400.0)

#### SECTION DETAILS

Sec	MD	Inc	Azi	TVD	+N/-S	+E/-W	DLeg	TFace	VSec	Target
1	0.0	0.00	0.00	0.0	0.0	0.0	0.00	0.00	0.0	
2	800.0	0.00	0.00	800.0	0.0	0.0	0.00	0.00	0.0	
3	1502.1	14.04	286.18	1495.1	23.9	-82.2	2.00	286.18	85.6	
4	4604.6	14.04	286.18	4504.9	233.6	-805.2	0.00	0.00	838.4	
5	5306.7	0.00	0.00	5200.0	257.5	-887.4	2.00	180.00	924.0	TARGET BHL 656'FNL, 606'FEL
6	7606.7	0.00	0.00	7500.0	257.5	-887.4	0.00	0.00	924.0	