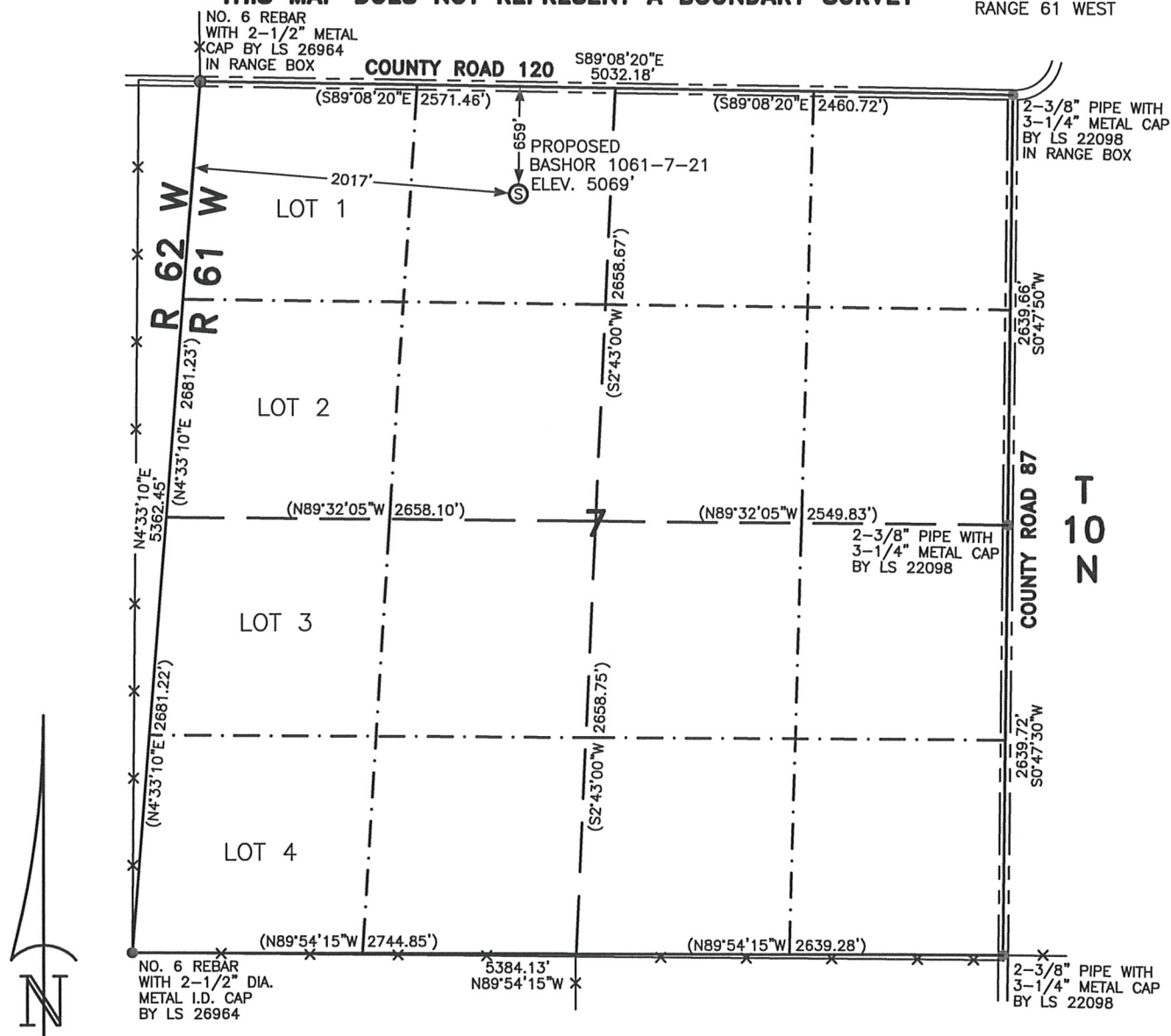


**WELL LOCATION CERTIFICATE****THIS MAP DOES NOT REPRESENT A BOUNDARY SURVEY**SECTION 7  
TOWNSHIP 10 NORTH  
RANGE 61 WEST

SCALE: 1"=1000'

0 500 1000



SCALE IN FEET

IN ACCORDANCE WITH A REQUEST FROM RYAN ANTONIO - NOBLE ENERGY INC. LEIBERT-McATEE & ASSOCIATES, INC HAS DETERMINED THE LOCATION OF THE BASHOR 1061-7-21 WELL TO BE 659' FNL AND 2017' FWL, AS MEASURED AT NINETY (90) DEGREES FROM THE SECTION LINES OF SECTION 7, TOWNSHIP 10 NORTH, RANGE 61 WEST, 6TH PRINCIPAL MERIDIAN, WELD COUNTY, COLORADO.

I HEREBY CERTIFY THAT THIS WELL LOCATION CERTIFICATE WAS PREPARED BY ME, OR UNDER MY DIRECT SUPERVISION. THAT THE FIELD WORK WAS COMPLETED ON 1/7/2010, FOR AND ON BEHALF OF NOBLE ENERGY INC, THAT IT IS NOT A LAND SURVEY PLAT OR AN IMPROVEMENT SURVEY PLAT, AND THAT IT IS NOT TO BE RELIED UPON FOR ESTABLISHMENT OF FENCE, BUILDING, OR OTHER FUTURE IMPROVEMENT LINES.

**NOTES:**

- 1) BASIS OF BEARINGS FOR THIS MAP ARE BASED UPON GPS OBSERVATIONS MADE ON 1/7/2010 BETWEEN MONUMENT LOCATED AT THE NORTHWEST SECTION CORNER AND THE NORTHEAST SECTION CORNER OF SAID SECTION AND WITH ALL BEARINGS SHOWN HEREON RELATIVE THERETO.
- 2) ELEVATIONS ARE BASED UPON AA 169 BENCHMARK IN THE NE1/4 OF SECTION 32, T11N, R61W ELEV=5122.96' NGVD29 DATUM.
- 3) SEE VISIBLE IMPROVEMENTS EXHIBIT FOR ALL IMPROVEMENTS WITHIN 400'.
- 4) THE LOCATION FALLS IN PASTURE.

LATITUDE &amp; LONGITUDE (NAD 83 SURFACE HOLE)

LATITUDE: N 40.85428

LONGITUDE: W 104.25089

PDOP: 2.2

QUARTER-QUARTER: NE1/4NW1/4

NEAREST PROPERTY LINE: 659' NORTH

**LEGEND**

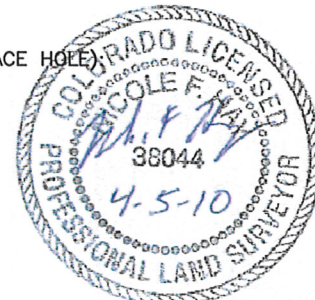
⑤ PROPOSED SURFACE LOCATION

== == == ROAD

-x-x- FENCE

CALCULATED DIMENSIONS  
ARE IN PARENTHESESGPS OPERATOR: DARREN VEAL  
DWG NO. 1189-09

NOTICE: According to Colorado law you MUST commence any legal action based upon any defect in the W.L.C. within three years after you first discover such defect. In no event may only action based upon any defect in this W.L.C. be commenced more than ten years from this sold date of the certification shown hereon.

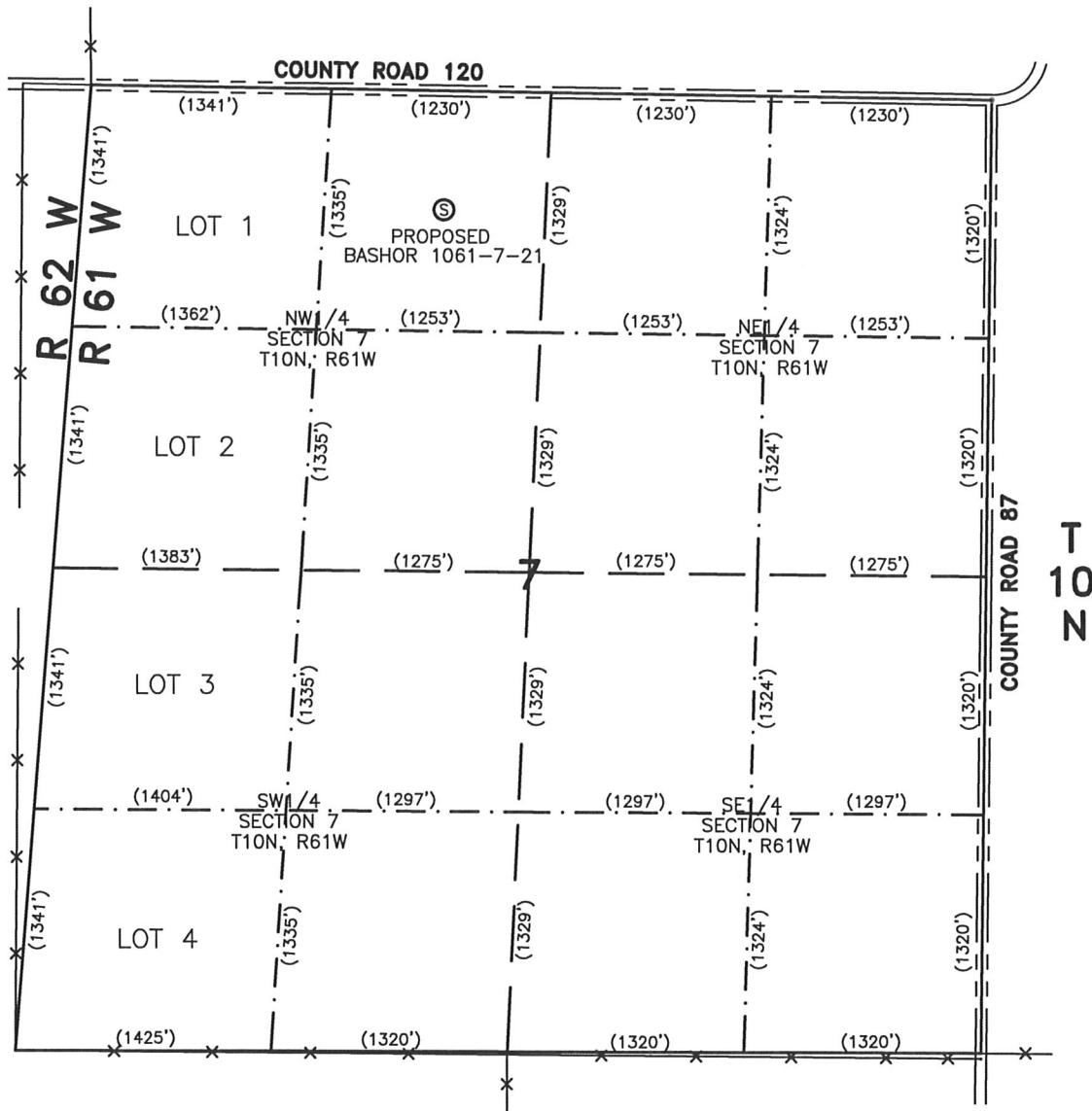


COMPLETED 4-5-10

NICOLE F. HAY  
FOR AND ON BEHALF OF  
LEIBERT-McATEE & ASSOCIATES, INC  
P.L.S. 38044

# SITE SKETCH - BASHOR 1061-7-21

SECTION 7  
TOWNSHIP 10 NORTH  
RANGE 61 WEST



NOTES:  
1) THIS SKETCH DOES NOT REPRESENT A BOUNDARY SURVEY.



SCALE: 1"=1000'

0 500 1000



SCALE IN FEET

## LEGEND

⊙ PROPOSED SURFACE LOCATION

== == == ROAD

-x-x- FENCE

CALCULATED DIMENSIONS  
ARE IN PARENTHESES