

T6S, R95W, 6th P.M.

WC
1921 Brass Cap
1.0' High, Pile
of Stones
Lat: 39.517658
Long: 108.013317

WC
1921 Brass Cap
2.0' High
Lat: 39.517647
Long: 108.006144

1921 Brass Cap
1.9' High
Lat: 39.517644
Long: 107.994442

N89°57'30"E - 2662.51' (Meas.)

BASIS OF ELEVATION

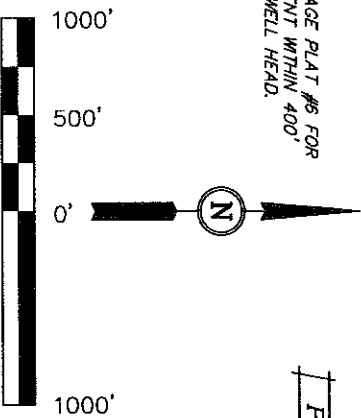
WILLIAMS PRODUCTION RMT COMPANY
Well location, FEDERAL PA 421-21, located as shown in the SE 1/4 NW 1/4 of Section 21, T6S, R95W, 6th P.M., Garfield County, Colorado.

SPOT ELEVATION AT THE NORTHWEST CORNER OF SECTION 30, T5S, R95W, 6th P.M. TAKEN FROM THE FORKED GULCH QUADRANGLE, COLORADO, GARFIELD COUNTY, 7.5 MINUTE SERIES (TOPOGRAPHICAL MAP) PUBLISHED BY THE UNITED STATES DEPARTMENT OF THE INTERIOR, GEOLOGICAL SURVEY. SAID ELEVATION IS MARKED AS BEING 5966 FEET.

BASIS OF BEARINGS

BASIS OF BEARINGS IS A G.P.S. OBSERVATION.

NOTE:
SEE CURRENT FOOTAGE PLAT #6 FOR
EXISTING IMPROVEMENT WITHIN 400'
OF THE PROPOSED WELL HEAD.



CERTIFICATE

THIS IS TO CERTIFY THAT THE ABOVE PLAT WAS PREPARED FROM FIELD NOTES OF ACTUAL SURVEYS MADE BY ME OR UNDER MY SUPERVISION AND THAT THE SAME ARE TRUE AND CORRECT TO THE BEST OF MY KNOWLEDGE AND BELIEF.

REGISTERED AND SWORN TO
REGISTRATION NO. 17422
STATE OF COLORADO

UINTAH ENGINEERING & LAND SURVEYING
86 SOUTH 200 EAST - VERNAL, UTAH 84078
(435) 789-1017

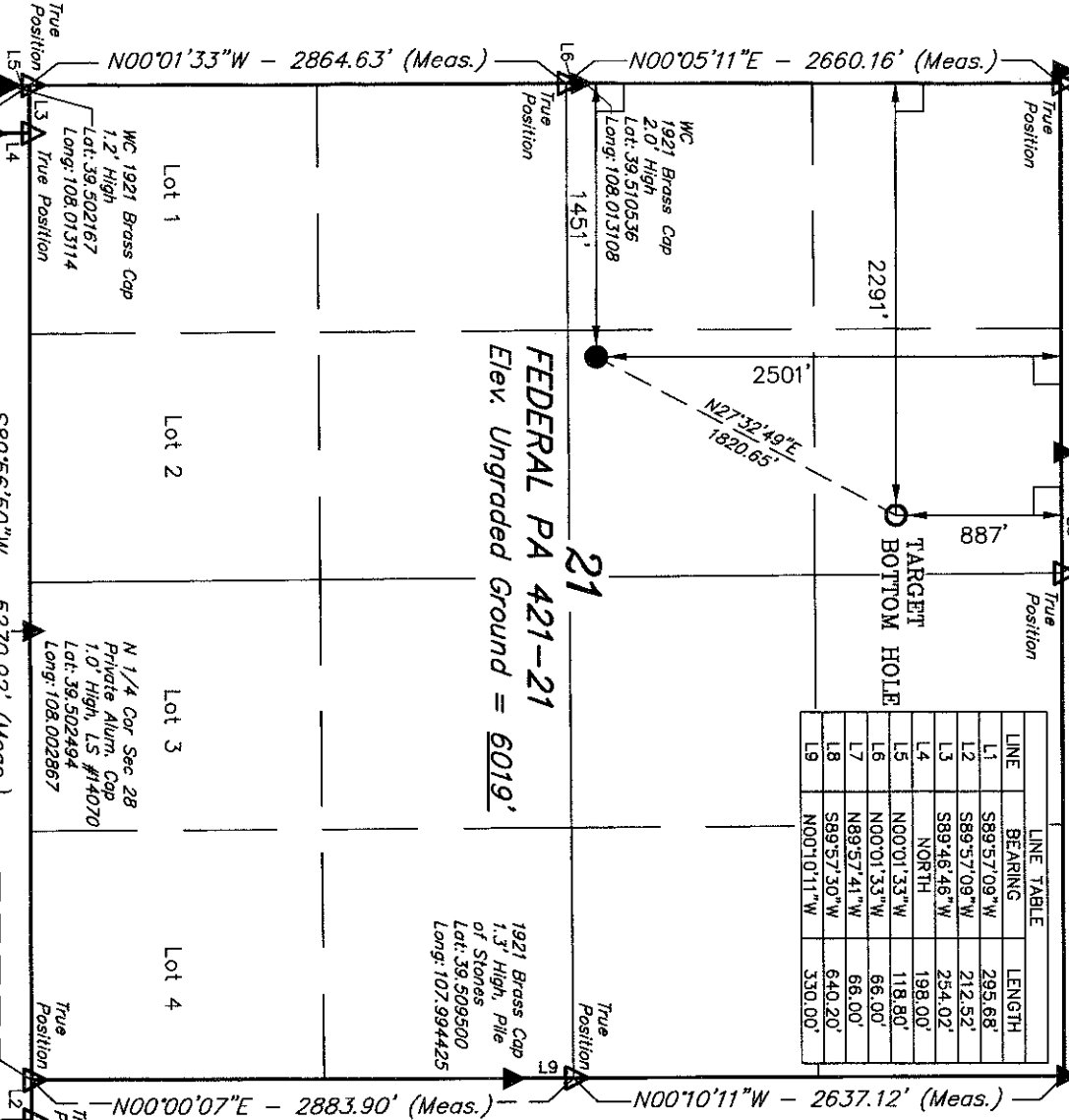
SCALE 1" = 1000'
DATE SURVEYED: 02-23-09
DATE DRAWN: 03-30-10

PARTY B.H. G.O. D.R.B. REFERENCES G.L.O. PLAT
WEATHER WARM
WILLIAMS PRODUCTION RMT COMPANY

LINE	BEARING	LENGTH
L1	S89°57'09"W	295.68'
L2	S89°57'09"W	212.52'
L3	S89°48'46"W	254.02'
L4	NORTH	198.00'
L5	N00°01'33"W	118.80'
L6	N00°01'33"W	66.00'
L7	N89°57'41"W	66.00'
L8	S89°57'30"W	640.20'
L9	N00°10'11"W	330.00'

TARGET
BOTTOM HOLE

FEDERAL PA 421-21
Elev. Ungraded Ground = 6019'



LEGEND:

● = PROPOSED WELL HEAD.
▲ = SECTION CORNERS LOCATED.
△ = SECTION CORNERS RE-ESTAB.
BY SINGLE PROPORTION METHOD.

WC 1921 Brass Cap
1.2' High, Steel Post
Lat: 39.501953
Long: 108.01214

NAD 83 (TARGET BOTTOM HOLE)
LATITUDE = 39°30'54.77" (39.515214)
LONGITUDE = 108°00'17.91" (108.004975)
STATE PLANE (COLO. CENTRAL-NAD 83)
N = 1622288.200
E = 2293377.500

PDOP = 2.0
Lat: 39.502469
Long: 107.992639

WC 1921 Brass Cap
0.8' High, Pile
of Stones
Lat: 39.502469
Long: 107.992639