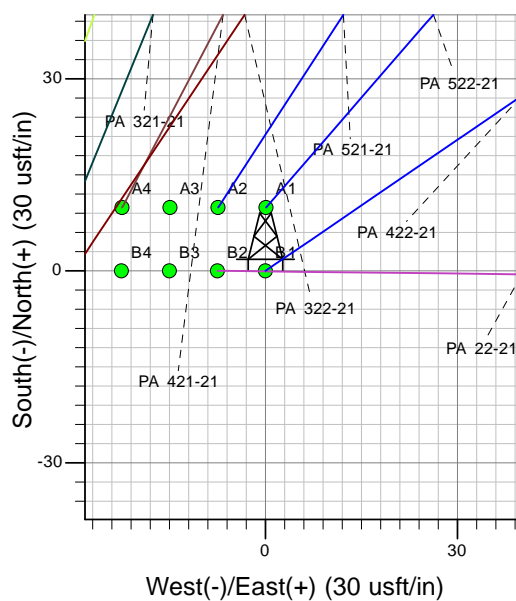
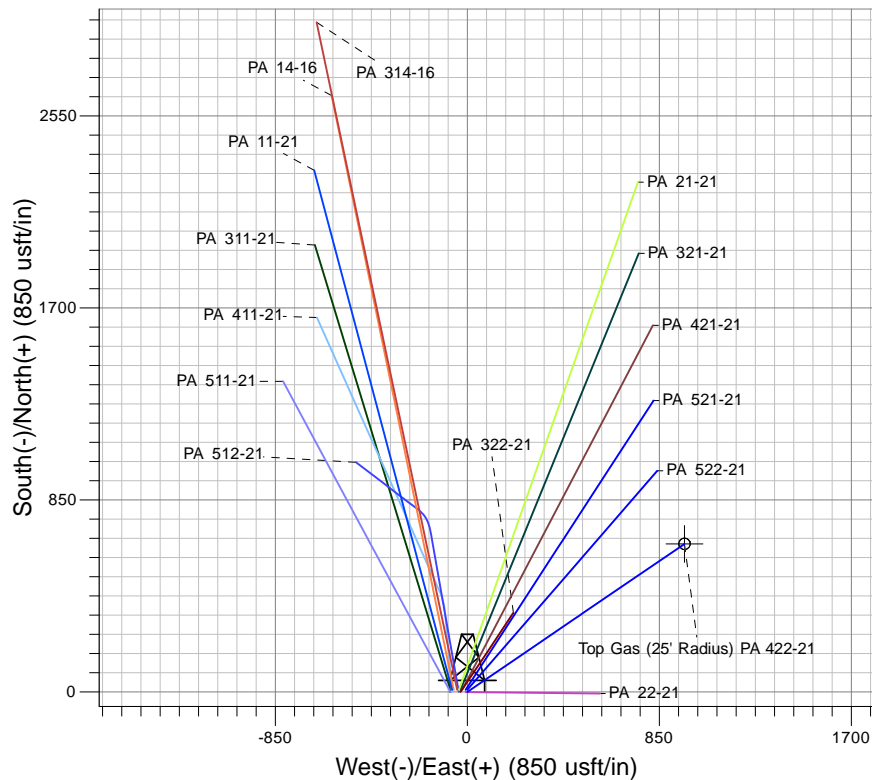
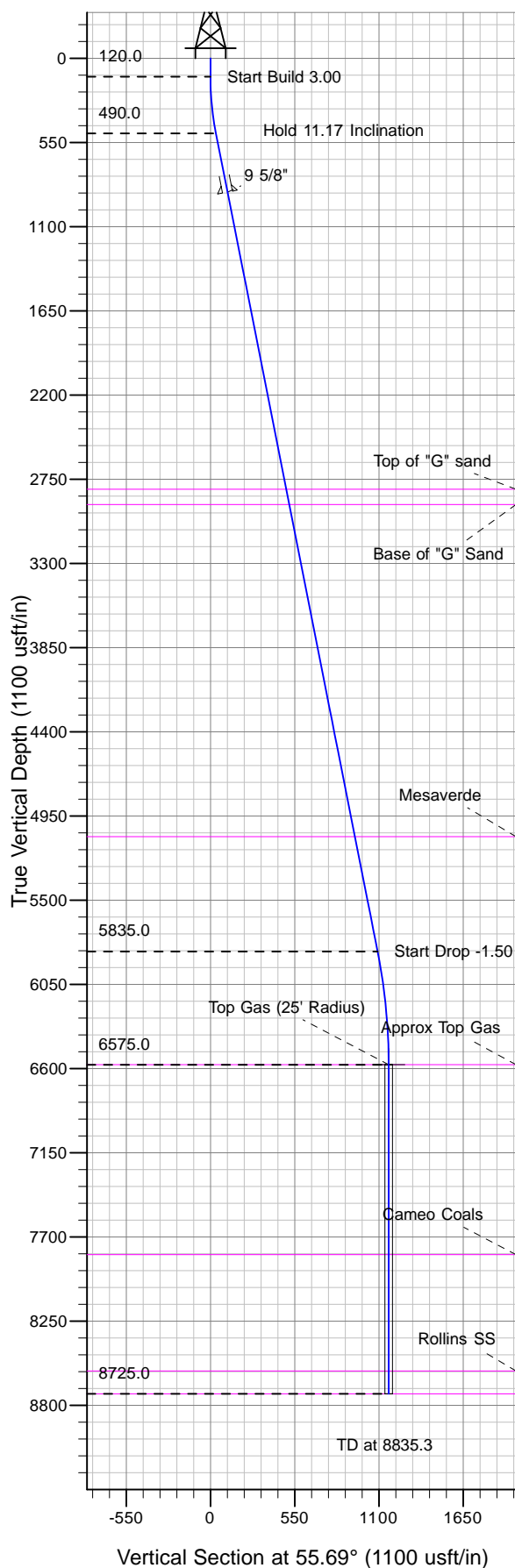




Well Name: PA 422-21
Surface Location: PA 22-21 Pad
North American Datum 1983 , US State Plane 1983, Colorado Central Zone
Ground Elevation: 6023.0
+N/-S +E/-W Northing Easting Latitude Longitude Slot
0.0 0.0 1620688.84 2292511.88 39° 30' 38.734 N 108° 0' 28.387 W B1
KELLY BUSHING @ 6049.0usft (Nabors 577 (26' KB) JMS)



Project: PA 21-06S-095W
Site: PA 22-21 Pad
Well: PA 422-21
Design #1 18Mar10 kjs



Azimuths to True North
Magnetic North: 10.52°
Magnetic Field
Strength: 52381.8snT
Dip Angle: 65.78°
Date: 3/18/2010
Model: IGRF2010

ANNOTATIONS

| TVD | MD | Inc | Azi | +N/-S | +E/-W | Vsect | Departure | Annotation |
|--------|--------|-------|-------|-------|-------|--------|-----------|------------------------|
| 120.0 | 120.0 | 0.00 | 0.00 | 0.0 | 0.0 | 0.0 | 0.0 | Start Build 3.00 |
| 490.0 | 492.3 | 11.17 | 55.69 | 20.4 | 29.9 | 36.2 | 36.2 | Hold 11.17 Inclination |
| 5835.0 | 5940.6 | 11.17 | 55.69 | 615.3 | 901.7 | 1091.7 | 1091.7 | Start Drop -1.50 |
| 6575.0 | 6685.3 | 0.00 | 0.00 | 656.1 | 961.5 | 1164.0 | 1164.0 | Top Gas |
| 8725.0 | 8835.3 | 0.00 | 0.00 | 656.1 | 961.5 | 1164.0 | 1164.0 | TD at 8835.3 |