

76S, R95W, 6th P.M.

WC
1921 Brass Cap
1.0' High, Pile
of Stones
Lat: 39.517658
Long: 108.013317

1921 Brass Cap
1.9' High
Lat: 39.517644
Long: 107.994442

N89°57'30"E - 2662.51' (Meas.)

BASIS OF ELEVATION

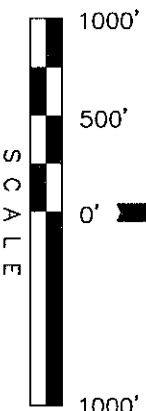
WILLIAMS PRODUCTION RMT COMPANY
Well location, FEDERAL PA 512-21, located as shown in the SE 1/4 NW 1/4 of Section 21, T6S, R95W, 6th P.M., Garfield County, Colorado.

SPOT ELEVATION AT THE NORTHWEST CORNER OF SECTION 30, T5S, R95W, 6th P.M. TAKEN FROM THE FORKED GULCH QUADRANGLE, COLORADO, GARFIELD COUNTY, 7.5 MINUTE SERIES (TOPOGRAPHICAL MAP) PUBLISHED BY THE UNITED STATES DEPARTMENT OF THE INTERIOR, GEOLOGICAL SURVEY. SAID ELEVATION IS MARKED AS BEING 5966 FEET.

BASIS OF BEARINGS

BASIS OF BEARINGS IS A G.P.S. OBSERVATION.

NOTE:
SEE CURRENT FOOTAGE PLAT #6 FOR
EXISTING IMPROVEMENT WITHIN 400'
OF THE PROPOSED WELL HEAD.



CERTIFICATE

THIS IS TO CERTIFY THAT THE ABOVE PLAT WAS PREPARED FROM
FIELD NOTES OF ACTUAL SURVEYS MADE BY ME OR UNDER MY
SUPERVISION AND THAT THE SAME ARE TRUE AND CORRECT TO THE
BEST OF MY KNOWLEDGE AND BELIEF.

REGISTERED LAND SURVEYOR
REGISTRATION NO. 19420
STATE OF COLORADO

UTAH ENGINEERING & LAND SURVEYING
85 SOUTH 200 EAST - VERNAL, UTAH 84078
(435) 789-1017

SCALE: 1" = 1000'
DATE SURVEYED: 02-23-09
DATE DRAWN: 03-30-10

PARTY: B.H. G.O. D.R.B. REFERENCES: G.L.O. PLAT

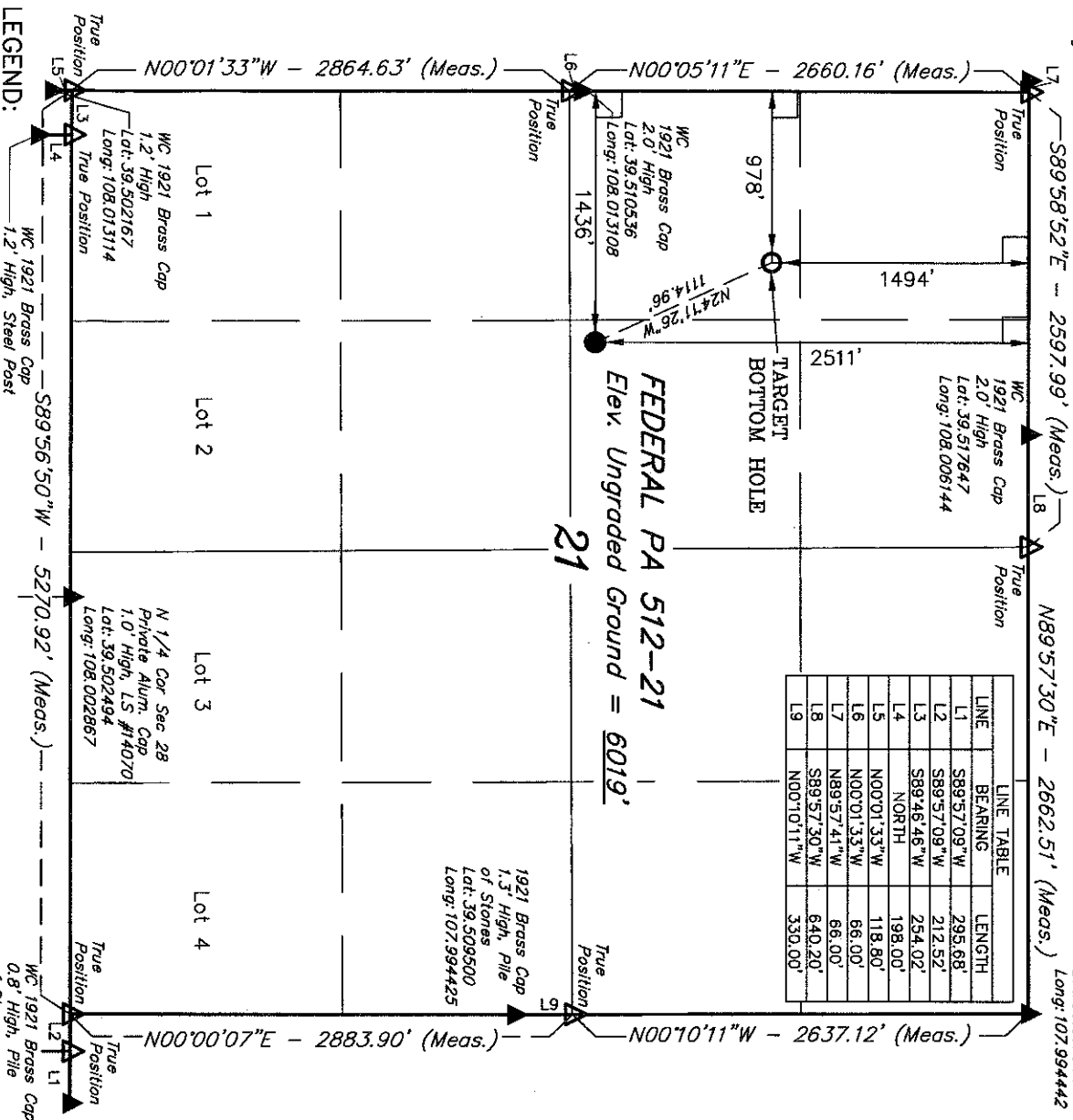
WEATHER: WARM

WILLIAMS PRODUCTION RMT COMPANY

LINE	BEARING	LENGTH
L1	S89°57'09"W	295.68'
L2	S89°57'09"W	212.52'
L3	S89°46'46"W	254.02'
L4	NORTH	198.00'
L5	N00°01'33"W	118.80'
L6	N00°01'33"W	66.00'
L7	S89°57'41"W	66.00'
L8	S89°57'30"W	640.20'
L9	N00°10'11"W	330.00'

FEDERAL PA 512-21
Elev. Ungraded Ground = 6019'

21



LEGEND:

- = 90° SYMBOL
- = PROPOSED WELL HEAD.
- = SECTION CORNERS LOCATED.
- = SECTION CORNERS RE-ESTAB.
- BY SINGLE PROPORTION METHOD.

NAD 83 (TARGET BOTTOM HOLE)		PDOP = 2.3	
LATITUDE = 39°30'48.79" (39.513553)	LATITUDE = 39°30'38.73" (39.510758)	Long: 107.992639	
LONGITUDE = 108°00'34.68" (108.009633)	LONGITUDE = 108°00'28.86" (108.008017)	Lat: 39.502489	
STATE PLANE-COLO. CENTRAL-NAD 83	STATE PLANE-COLO. CENTRAL-NAD 83	Long: 107.992639	
N = 1621719.500	N = 1620889.865	Lat: 39.502489	
E = 2292047.200	E = 2292474.552	Long: 107.992639	