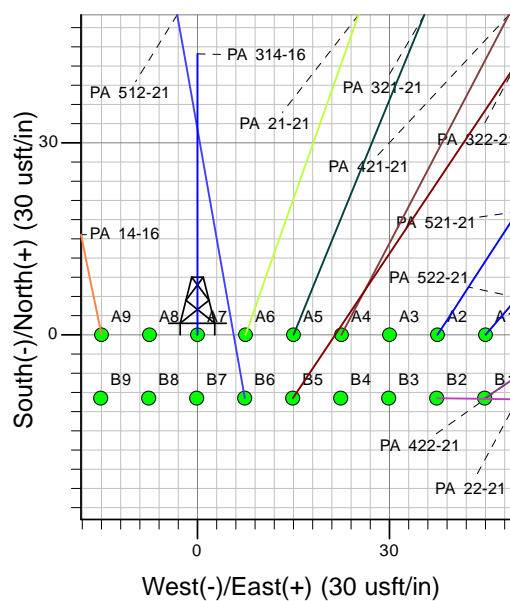
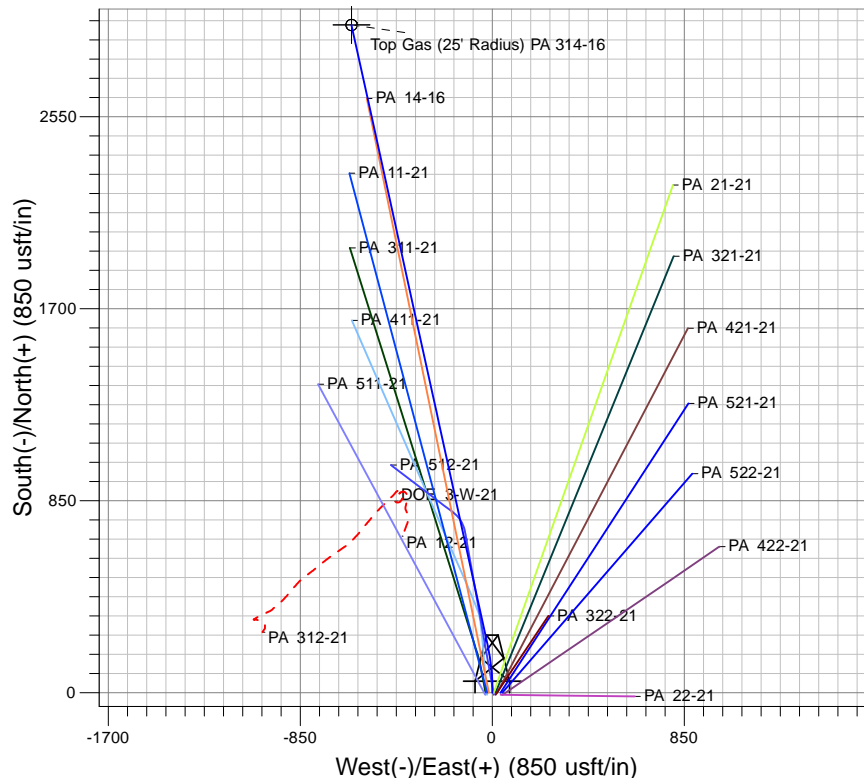
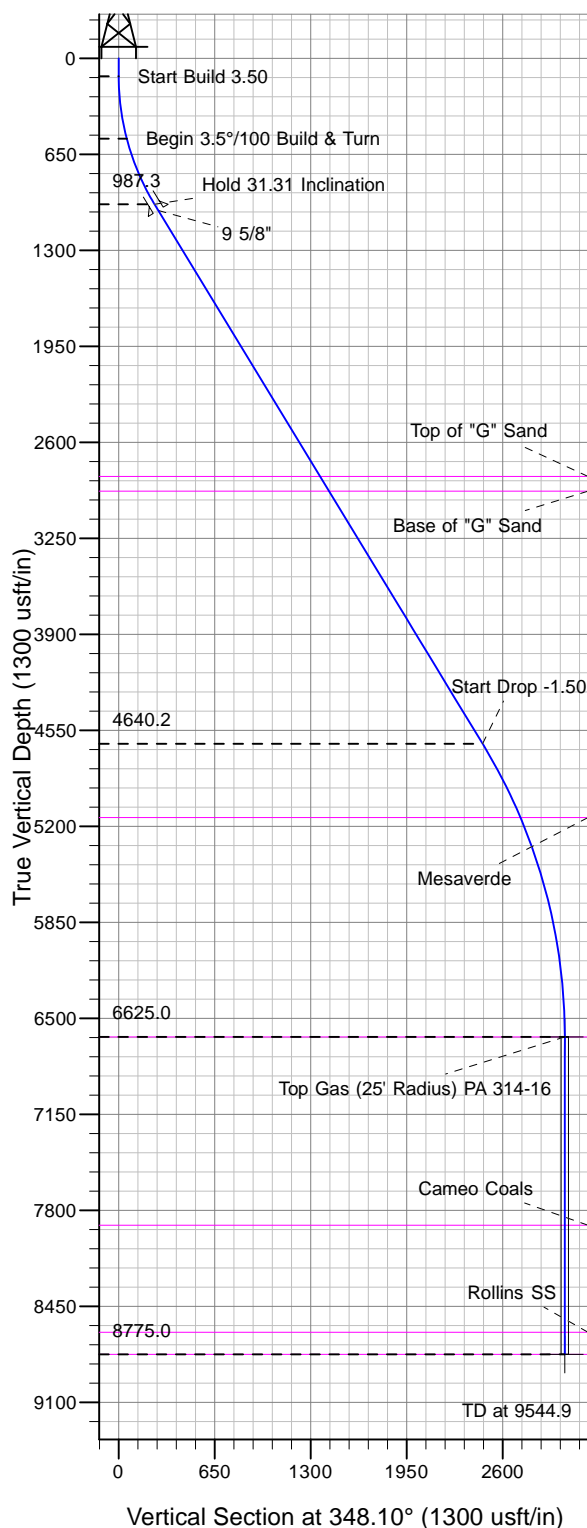




Well Name: PA 314-16  
Surface Location: PA 22-21 Pad  
North American Datum 1983 , US State Plane 1983, Colorado Central Zone  
Ground Elevation: 6023.0  
+N/-S +E/-W Northing Easting Latitude Longitude Slot  
0.0 0.0 1620699.97 2292467.27 39° 30' 38.832 N 108° 0' 28.960 W A7  
KELLY BUSHING @ 6049.0usft (Nabors 577 (26' KB) JMS)



Project: PA 21-06S-095W  
Site: PA 22-21 Pad  
Well: PA 314-16  
Design #1 18Mar10 kjs



Azimuths to True North  
Magnetic North: 10.52°  
Magnetic Field  
Strength: 52381.8nT  
Dip Angle: 65.78°  
Date: 3/18/2010  
Model: IGRF2010

#### ANNOTATIONS

| TVD    | MD     | Inc   | Azi    | +N/-S  | +E/-W  | Vsect  | Departure | Annotation                  |
|--------|--------|-------|--------|--------|--------|--------|-----------|-----------------------------|
| 120.0  | 120.0  | 0.00  | 0.00   | 0.0    | 0.0    | 0.0    | 0.0       | Start Build 3.50            |
| 543.7  | 548.6  | 15.00 | 0.00   | 55.8   | 0.0    | 54.6   | 55.8      | Begin 3.5°/100 Build & Turn |
| 987.3  | 1032.4 | 31.31 | 347.62 | 242.5  | -27.1  | 242.9  | 244.8     | Hold 31.31 Inclination      |
| 4640.2 | 5307.8 | 31.31 | 347.62 | 2412.5 | -503.5 | 2464.4 | 2466.4    | Start Drop -1.50            |
| 6625.0 | 7394.9 | 0.00  | 0.00   | 2955.7 | -622.7 | 3020.6 | 3022.6    | Top gas                     |
| 8775.0 | 9544.9 | 0.00  | 0.00   | 2955.7 | -622.7 | 3020.6 | 3022.6    | TD at 9544.9                |