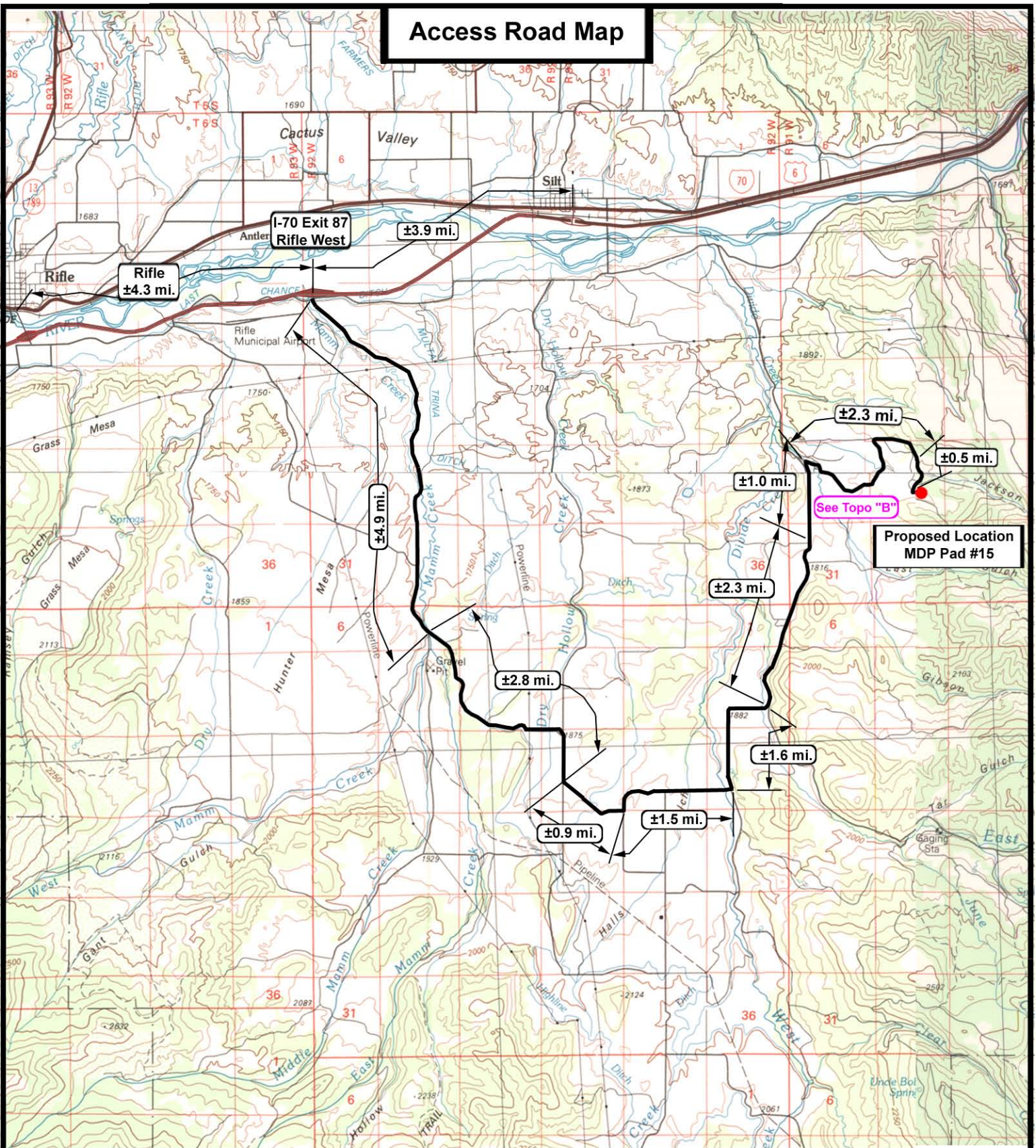


Access Road Map



BILL BARRETT
B CORP.

MDP Pad #15
SEC. 29, T6S, R91W, 6th P.M.



Tri-State
Land Surveying Inc.
(435) 781-2501
180 North Vernal Ave. Vernal, Utah 84078

SCALE: 1 = 100,000
DRAWN BY: JAS
DATE: 10-30-2009

Legend

Existing Road
Proposed Access

TOPOGRAPHIC MAP

"A"

SHEET
9
OF 12