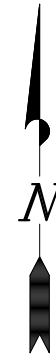
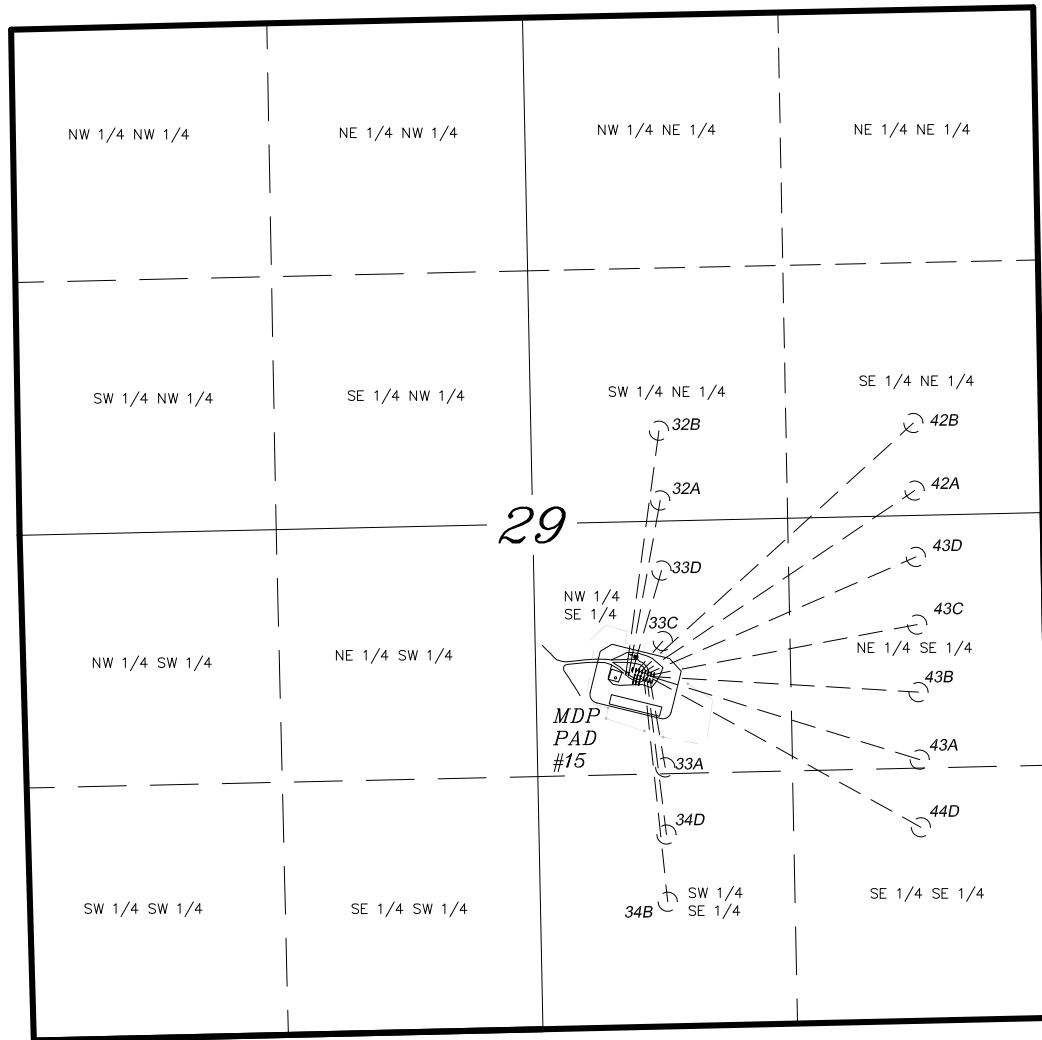


T6S, R91W, 6th P.M.

BILL BARRETT CORP.

**GENERAL MUTLI WELL PLAN
SECTION DRILLING MAP
WELL PAD (MDP PAD #15)**



LATITUDE & LONGITUDE Surface position of Wells (NAD 83)		
WELL	LATITUDE	LONGITUDE
44D-29	39° 29' 47.81"	107° 34' 32.38"
33A-29	39° 29' 47.84"	107° 34' 32.58"
34D-29	39° 29' 47.88"	107° 34' 32.77"
34B-29	39° 29' 47.92"	107° 34' 32.97"
32A-29	39° 29' 48.21"	107° 34' 33.93"
32B-29	39° 29' 48.24"	107° 34' 34.13"
43A-29	39° 29' 47.90"	107° 34' 32.35"
43B-29	39° 29' 47.94"	107° 34' 32.54"
43C-29	39° 29' 47.98"	107° 34' 32.74"
43D-29	39° 29' 48.02"	107° 34' 32.94"
42A-29	39° 29' 48.05"	107° 34' 33.14"
42B-29	39° 29' 48.09"	107° 34' 33.34"
33C-29	39° 29' 48.13"	107° 34' 33.53"
33D-29	39° 29' 48.17"	107° 34' 33.73"

LATITUDE & LONGITUDE Bottom hole position of Wells (NAD 83)		
WELL	LATITUDE	LONGITUDE
44D-29	39° 29' 40.15"	107° 34' 14.59"
33A-29	39° 29' 43.26"	107° 34' 31.57"
34D-29	39° 29' 39.81"	107° 34' 31.49"
34B-29	39° 29' 36.35"	107° 34' 31.42"
32A-29	39° 29' 56.99"	107° 34' 31.86"
32B-29	39° 30' 00.59"	107° 34' 31.93"
43A-29	39° 29' 43.63"	107° 34' 14.66"
43B-29	39° 29' 47.10"	107° 34' 14.73"
43C-29	39° 29' 50.58"	107° 34' 14.81"
43D-29	39° 29' 54.06"	107° 34' 14.88"
42A-29	39° 29' 57.47"	107° 34' 14.95"
42B-29	39° 30' 00.95"	107° 34' 15.02"
33C-29	39° 29' 49.76"	107° 34' 31.70"
33D-29	39° 29' 53.39"	107° 34' 31.78"

TRI STATE LAND SURVEYING & CONSULTING

180 NORTH VERNAL AVE. — VERNAL, UTAH 84078
(435) 781-2501

DATE SURVEYED: 01-05-10	SURVEYED BY: C.D.S.	SHEET 1 OF 12
DATE DRAWN: 01-06-10	DRAWN BY: F.T.M.	
REVISED: 04-06-10 F.T.M.	SCALE: 1" = 1000'	