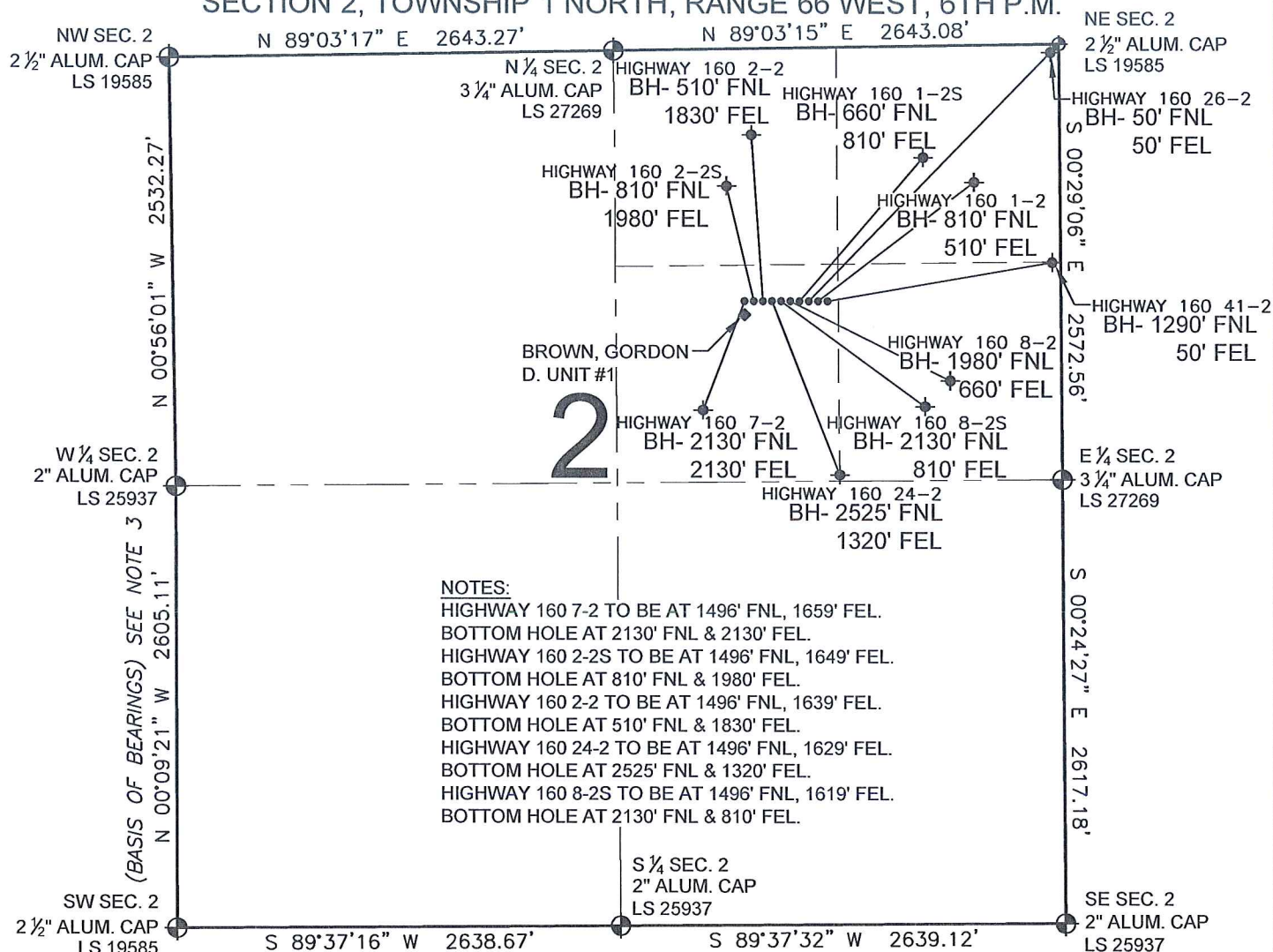


# PAD DRAWING - HIGHWAY 160 10 PAD

SECTION 2, TOWNSHIP 1 NORTH, RANGE 66 WEST, 6TH P.M.



## NOTES:

HIGHWAY 160 7-2 TO BE AT 1496' FNL, 1659' FEL.  
 BOTTOM HOLE AT 2130' FNL & 2130' FEL.  
 HIGHWAY 160 2-2S TO BE AT 1496' FNL, 1649' FEL.  
 BOTTOM HOLE AT 810' FNL & 1980' FEL.  
 HIGHWAY 160 2-2 TO BE AT 1496' FNL, 1639' FEL.  
 BOTTOM HOLE AT 510' FNL & 1830' FEL.  
 HIGHWAY 160 24-2 TO BE AT 1496' FNL, 1629' FEL.  
 BOTTOM HOLE AT 2525' FNL & 1320' FEL.  
 HIGHWAY 160 8-2S TO BE AT 1496' FNL, 1619' FEL.  
 BOTTOM HOLE AT 2130' FNL & 810' FEL.

## LEGEND

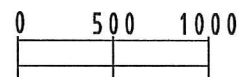
⊕ = EXISTING MONUMENT    ♦ = BOTTOM HOLE    BH= BOTTOM HOLE  
 ● = PROPOSED WELL    ◆ = EXISTING WELL

## NOTES:

- THIS SURVEY WAS DONE BY GPS METHODS AND CONFORMS TO THE MINIMUM STANDARDS SET BY THE C.O.G.C.C., RULE NO. 215
- ELEVATIONS SHOWN AT THE WELL HEAD, AS WELL AS HORIZONTAL CONTROL, ARE BASED ON GPS-RTK VALUES DERIVED FROM DOING 2-HOUR STATIC GPS SESSIONS AND REDUCTIONS USING O.P.U.S. SOLUTIONS.  
 VERTICAL = NAVD88;    HORIZONTAL = NAD83/92
- THE BEARINGS SHOWN HEREON ARE BASED ON GPS OBSERVATIONS BETWEEN THE MONUMENTS SHOWN HEREON AS FOUND ON THE FIELD DATE BELOW.
- DISTANCES SHOWN ARE AT GROUND LEVEL, AS MEASURED IN THE FIELD, WITH TIES TO WELLS MEASURED AT A PERPENDICULAR TO SECTION LINES.

## NOTES:

HIGHWAY 160 8-2 TO BE AT 1496' FNL, 1609' FEL.  
 BOTTOM HOLE AT 1980' FNL & 660' FEL.  
 HIGHWAY 160 1-2S TO BE AT 1496' FNL, 1599' FEL.  
 BOTTOM HOLE AT 660' FNL & 810' FEL.  
 HIGHWAY 160 26-2 TO BE AT 1496' FNL, 1589' FEL.  
 BOTTOM HOLE AT 50' FNL & 50' FEL.  
 HIGHWAY 160 1-2 TO BE AT 1496' FNL, 1579' FEL.  
 BOTTOM HOLE AT 810' FNL & 510' FEL.  
 HIGHWAY 160 41-2 TO BE AT 1496' FNL, 1569' FEL.  
 BOTTOM HOLE AT 1290' FNL & 50' FEL.  
 BROWN, GORDON D. UNIT #1 IS 1544' FNL, 1659' FEL.



SCALE: 1"=1000'

## REVISIONS

INITIAL	DATE

PREPARED BY:

**PFS**

Petroleum Field Services, LLC  
 1801 W. 13th Ave.  
 Denver, CO 80204



KERR-MCGEE OIL & GAS ONSHORE LP

FIELD DATE:  
02-23-10

DRAWING DATE:  
03-05-10

BY:  
SMF

PAD NAME:  
HIGHWAY 160 10 PAD

SURFACE LOCATION:

WELD COUNTY, COLORADO  
 SW 1/4 NE 1/4, SEC. 2, T1N, R66W