

WILLIAMS PRODUCTION RMT COMPANY

PA 22-21

LOCATED IN GARFIELD COUNTY, COLORADO
SECTION 28, T9S, R23E, 6th P.M.

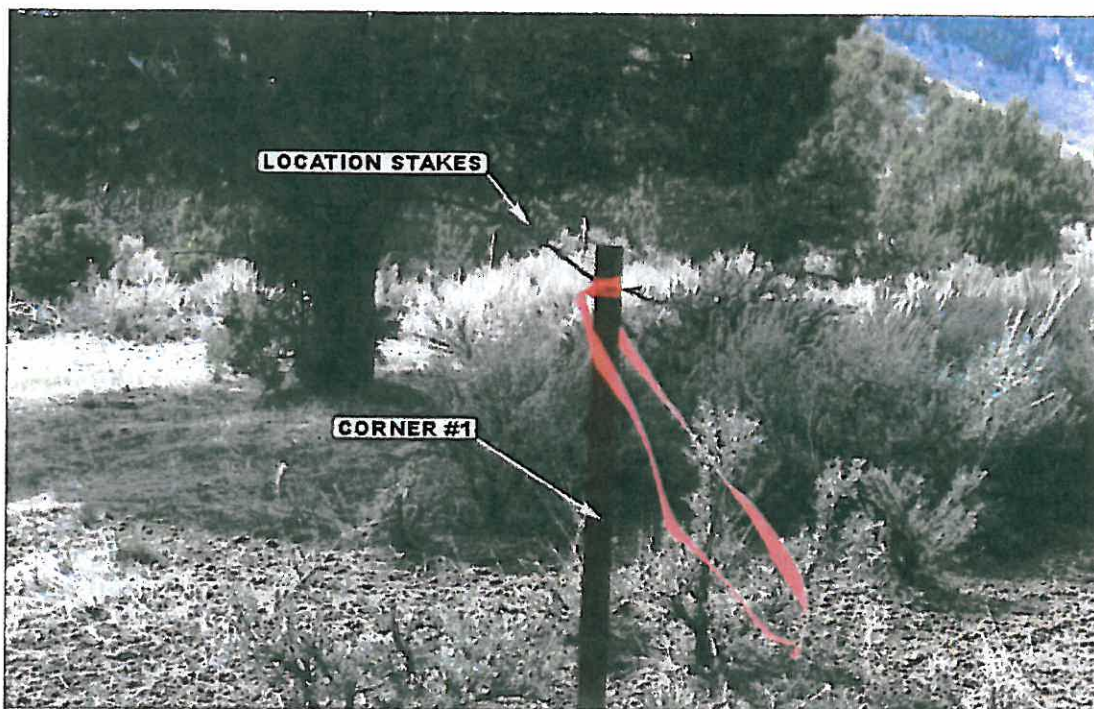


PHOTO: VIEW FROM CORNER #1 TO LOCATION STAKES

CAMERA ANGLE: WESTERLY



PHOTO: VIEW FROM BEGINNING OF PROPOSED ACCESS

CAMERA ANGLE: SOUTHEASTERLY



- Since 1964 -

U
E
L
S

Uintah Engineering & Land Surveying
85 South 200 East Vernal, Utah 84078
(435) 789-1017 * FAX (435) 789-1813

LOCATION PHOTOS

03 05 09
MONTH DAY YEAR

PHOTO
P1

TAKEN BY: B.H.

DRAWN BY: J.H.

REVISED: 04-19-10

WILLIAMS PRODUCTION RMT COMPANY

PA 22-21

LOCATED IN GARFIELD COUNTY, COLORADO
SECTION 28, T9S, R23E, 6th P.M.



PHOTO: VIEW OF LOCATION STAKES

CAMERA ANGLE: NORTHERLY



PHOTO: VIEW OF LOCATION STAKES

CAMERA ANGLE: EASTERLY



- Since 1964 -

UELS

Uintah Engineering & Land Surveying
85 South 200 East Vernal, Utah 84078
(435) 789-1017 * FAX (435) 789-1813

LOCATION PHOTOS

04 19 10
MONTH DAY YEAR

PHOTO

P2

TAKEN BY: B.B.

DRAWN BY: J.H.

REVISED: 00-00-00

WILLIAMS PRODUCTION RMT COMPANY

PA 22-21

LOCATED IN GARFIELD COUNTY, COLORADO
SECTION 28, T9S, R23E, 6th P.M.



PHOTO: VIEW OF LOCATION STAKES

CAMERA ANGLE: SOUTHERLY

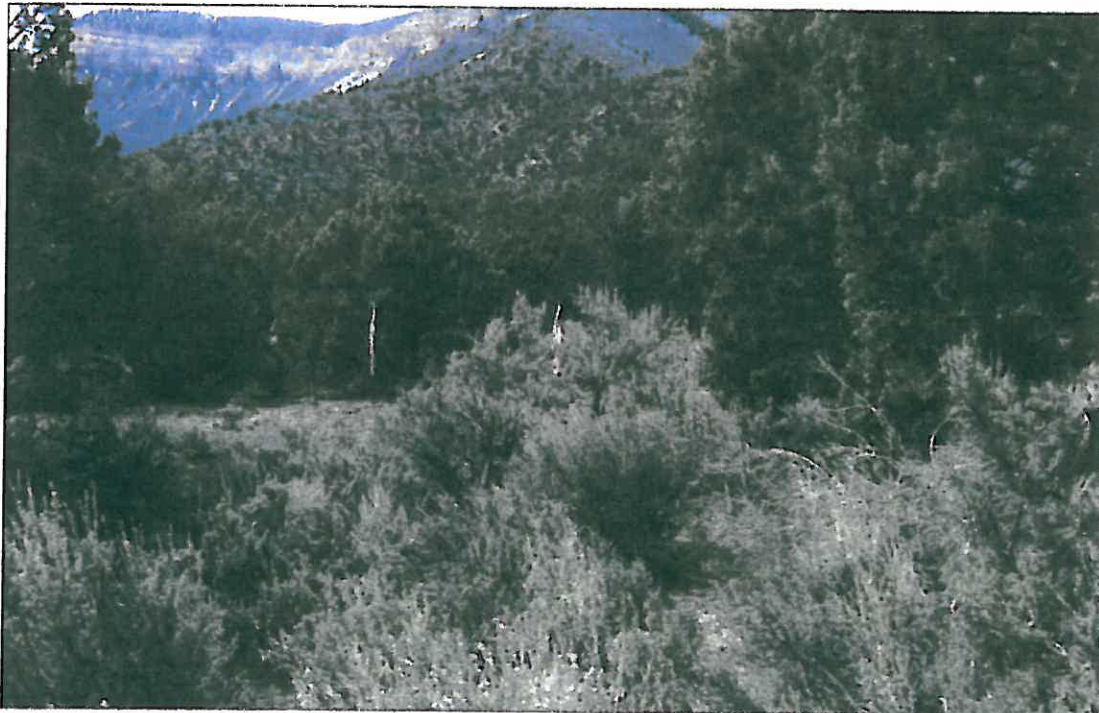


PHOTO: VIEW OF LOCATION STAKES

CAMERA ANGLE: WESTERLY



- Since 1964 -

U
E
L
S

Uintah Engineering & Land Surveying

85 South 200 East Vernal, Utah 84078
(435) 789-1017 * FAX (435) 789-1813

LOCATION PHOTOS

04 19 10
MONTH DAY YEAR

PHOTO

P3

TAKEN BY: B.B.

DRAWN BY: J.H.

REVISED: 00-00-00