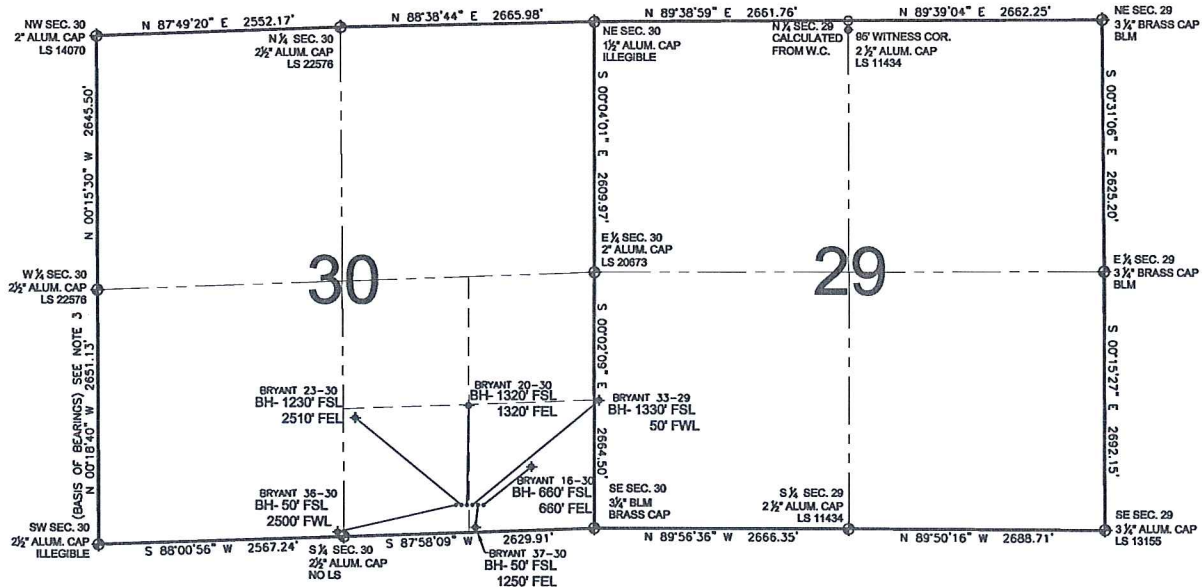


# PAD DRAWING - BRYANT 6 PAD

## SECTION 30, TOWNSHIP 2 NORTH, RANGE 68 WEST, 6TH P.M.



### LEGEND

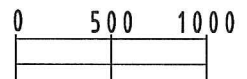
- = EXISTING MONUMENT   
 = BOTTOM HOLE   
 BH= BOTTOM HOLE  
 = PROPOSED WELL   
 = EXISTING WELL

### NOTES:

- THIS SURVEY WAS DONE BY GPS METHODS AND CONFORMS TO THE MINIMUM STANDARDS SET BY THE C.O.G.C.C., RULE NO. 215 (PDOP VALUE IS LESS THAN 6.0, LATITUDE AND LONGITUDE ARE ACCURATE TO 5 DECIMAL PLACES, AND GPS OBSERVATIONS ARE DIFFERENTIAL AND DONE BY QUALIFIED PERSONNEL.)
- ELEVATIONS SHOWN AT THE WELL HEAD, AS WELL AS HORIZONTAL CONTROL, ARE BASED ON GPS-RTK VALUES DERIVED FROM DOING 2-HOUR STATIC GPS SESSIONS AND REDUCTIONS USING O.P.U.S. SOLUTIONS.  
VERTICAL = NAVD88; HORIZONTAL = NAD83/92
- THE BEARINGS SHOWN HEREON ARE BASED ON GPS OBSERVATIONS BETWEEN THE MONUMENTS SHOWN HEREON AS FOUND ON THE FIELD DATE BELOW.
- DISTANCES SHOWN ARE AT GROUND LEVEL, AS MEASURED IN THE FIELD, WITH TIES TO WELLS MEASURED AT A PERPENDICULAR TO SECTION LINES.

### NOTES:

- BRYANT 16-30 TO BE AT 284' FSL, 1280' FEL.  
 BOTTOM HOLE AT 660' FSL & 660' FEL.  
 BRYANT 37-30 TO BE AT 284' FSL, 1296' FEL.  
 BOTTOM HOLE AT 50' FSL & 1250' FEL.  
 BRYANT 33-29 TO BE AT 284' FSL, 1312' FEL.  
 BOTTOM HOLE AT 1330' FSL & 50' FWL.  
 BRYANT 20-30 TO BE AT 284' FSL, 1328' FEL.  
 BOTTOM HOLE AT 1320' FSL & 1320' FEL.  
 BRYANT 23-30 TO BE AT 284' FSL, 1344' FEL.  
 BOTTOM HOLE AT 1230' FSL & 2510' FEL.  
 BRYANT 36-30 TO BE AT 284' FSL, 1360' FEL.  
 BOTTOM HOLE AT 50' FSL & 2500' FWL.



SCALE: 1"=1000'

### REVISIONS

INITIAL	DATE

PREPARED BY:



KERR-MCGEE OIL & GAS ONSHORE LP

FIELD DATE:  
03-17-10

DRAWING DATE:  
03-22-10

BY:  
SMF

PAD NAME:  
BRYANT 6 PAD

SURFACE LOCATION:

WELD COUNTY, COLORADO  
SW 1/4 SE 1/4, SEC. 30, T2N, R68W  
SE 1/4 SE 1/4, SEC. 30, T2N, R68W