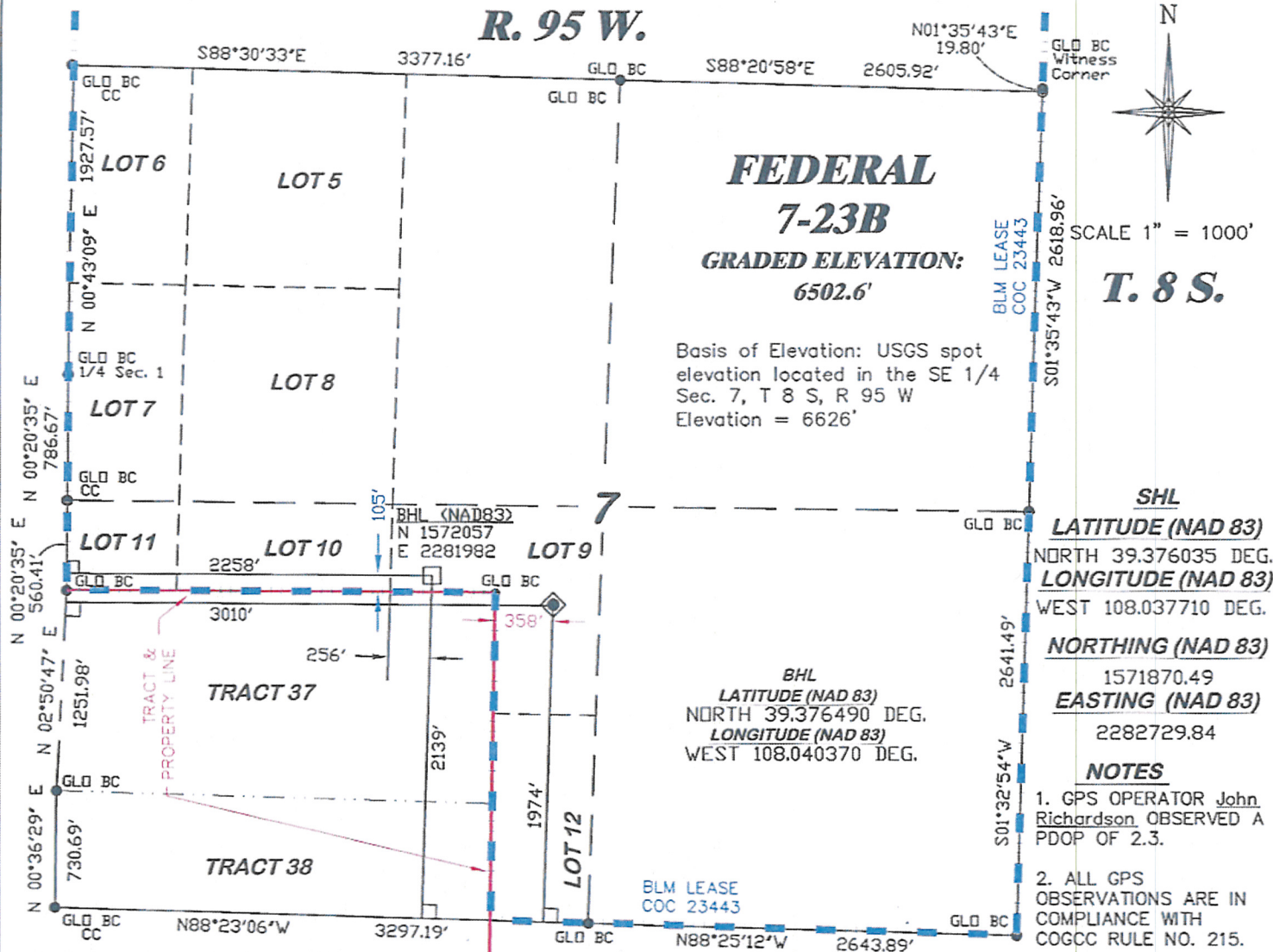


R. 95 W.



BASIS OF BEARING/DATUM

SPCS CO CENTRAL NAD 83, BASED ON NGS TRIG. STATION 'FABER' THE BASIS OF BEARINGS FOR THIS SURVEY IS REFERENCED TO THE SOUTH LINE OF THE SE 1/4 OF SECTION 7, BEING MONUMENTED AS SHOWN AND BEARING N 88° 25' 12" W.

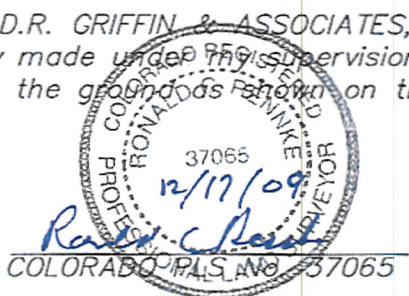
SURVEYOR'S STATEMENT

I, Ronald C. Rennke, an employee and agent on behalf of D.R. GRIFFIN & ASSOCIATES, INC. state the plat hereon is a correct representation of a survey made under my supervision on July 24, 2009 of the shown Federal 7-23B and is staked on the ground as shown on this plat.

LEGEND

- ◆ WELL LOCATION
- BOTTOM HOLE LOC. (APPROX)
- FOUND MONUMENT
- L DENOTES 90° TIE

SGV 7K PAD



DRG RIFFIN & ASSOCIATES, INC.
 (307) 362-5028 1414 ELK ST., ROCK SPRINGS, WY 82901

PLAT OF DRILLING LOCATION FOR NOBLE ENERGY, INC.
SHL IN NE 1/4 OF SW 1/4 (LOT 9) SECTION 7, T. 8 S., R. 95 W., 6th P.M. GARFIELD COUNTY, COLORADO

DRAWN: 11/06/06 - SC	SCALE: 1" = 1000'
REVISED: 12/14/09 - DEH	DRG JOB No. 14045
CHANGED DATUM NAD 83	EXHIBIT 1