

T9S, R93W, 6th P.M.

DELTA PETROLEUM CORP.

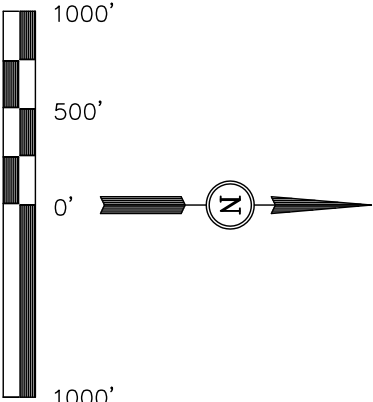
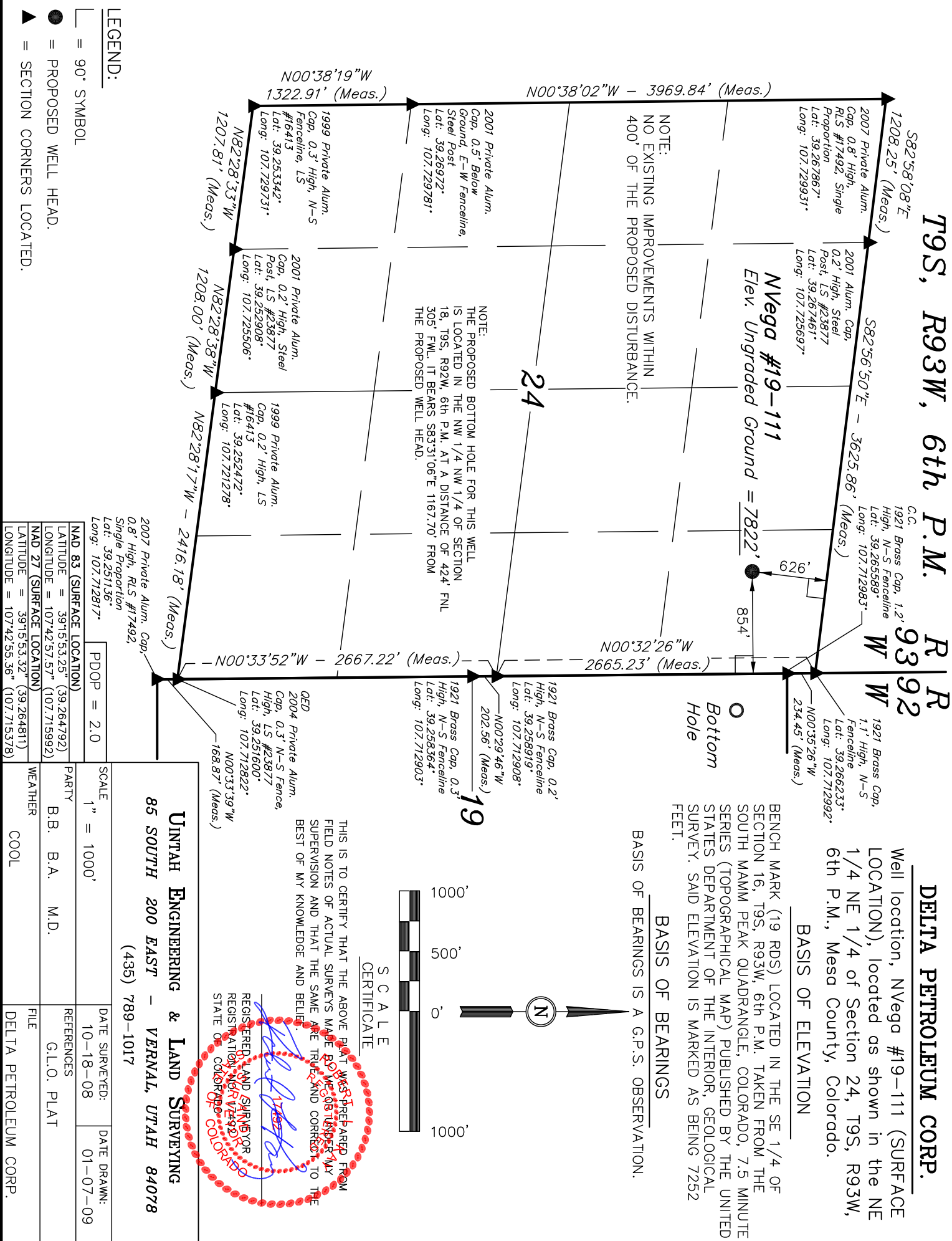
Well location, NVega #19-111 (SURFACE LOCATION), located as shown in the NE 1/4 NE 1/4 of Section 24, T9S, R93W, 6th P.M., Mesa County, Colorado.

BASIS OF ELEVATION

BENCH MARK (19 RDS) LOCATED IN THE SE 1/4 OF SECTION 16, T9S, R93W, 6th P.M. TAKEN FROM THE SOUTH MAMM PEAK QUADRANGLE, COLORADO, 7.5 MINUTE SERIES (TOPOGRAPHICAL MAP) PUBLISHED BY THE UNITED STATES DEPARTMENT OF THE INTERIOR, GEOLOGICAL SURVEY. SAID ELEVATION IS MARKED AS BEING 7252 FEET.

BASIS OF BEARINGS

BASIS OF BEARINGS IS A G.P.S. OBSERVATION.



SCALE CERTIFICATE

THIS IS TO CERTIFY THAT THE ABOVE PLAT WAS PREPARED FROM FIELD NOTES OF ACTUAL SURVEYS MADE BY ME, OR UNDER MY SUPERVISION AND THAT THE SAME ARE TRUE AND CORRECT TO THE BEST OF MY KNOWLEDGE AND BELIEF.

REGISTERED LAND SURVEYOR
REGISTRATION NO. 17492
STATE OF COLORADO

UNTAH ENGINEERING & LAND SURVEYING
85 SOUTH 200 EAST - VERNAL, UTAH 84078
(435) 789-1017

LEGEND:

- = 90° SYMBOL
- = PROPOSED WELL HEAD.
- ▲ = SECTION CORNERS LOCATED.

2007 Private Alum. Cap. 0.8' High, RLS #17492. Single Proportion Lat: 39.251136° Long: 107.712817°	
NAD 83 (SURFACE LOCATION)	PDOP = 2.0
LATITUDE = 39°15'53.25" (39.264792)	
LONGITUDE = 107°42'57.57" (107.715992)	
NAD 27 (SURFACE LOCATION)	
LATITUDE = 39°15'53.32" (39.264811)	
LONGITUDE = 107°42'55.36" (107.715378)	

SCALE	1" = 1000'	DATE SURVEYED:	DATE DRAWN:
PARTY	B.B. B.A. M.D.	10-18-08	01-07-09
WEATHER	COOL	REFERENCES	G.L.O. PLAT
		FILE	DELTA PETROLEUM CORP.

T9S, R93W, 6th P.M.

DELTA PETROLEUM CORP.

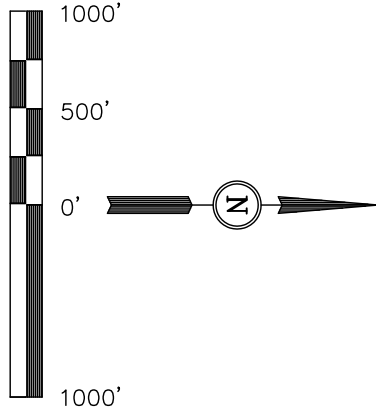
Well location, NVega #19-111 (TARGET BOTTOM HOLE), located as shown in the NW 1/4 NW 1/4 of Section 19, T9S, R92W, 6th P.M., Mesa County, Colorado.

BASIS OF ELEVATION

BENCH MARK (19 RDS) LOCATED IN THE SE 1/4 OF SECTION 16, T9S, R93W, 6th P.M. TAKEN FROM THE SOUTH MAMM PEAK QUADRANGLE, COLORADO, 7.5 MINUTE SERIES (TOPOGRAPHICAL MAP) PUBLISHED BY THE UNITED STATES DEPARTMENT OF THE INTERIOR, GEOLOGICAL SURVEY. SAID ELEVATION IS MARKED AS BEING 7252 FEET.

BASIS OF BEARINGS

BASIS OF BEARINGS IS A G.P.S. OBSERVATION.



SCALE CERTIFICATE

THIS IS TO CERTIFY THAT THE ABOVE PLAT WAS PREPARED FROM FIELD NOTES OF ACTUAL SURVEYS MADE BY ME OR UNDER MY SUPERVISION AND THAT THE SAME ARE TRUE AND CORRECT TO THE BEST OF MY KNOWLEDGE AND BELIEF.

REGISTERED LAND SURVEYOR
REGISTRATION NO. 17492
STATE OF COLORADO

UNTAH ENGINEERING & LAND SURVEYING
85 SOUTH 200 EAST - VERNAL, UTAH 84078
(435) 789-1017

SCALE	1" = 1000'	DATE SURVEYED:	10-18-08	DATE DRAWN:	01-27-10
PARTY	B.B. B.A. C.H.	REFERENCES	G.L.O. PLAT		
WEATHER	COOL	FILE	DELTA PETROLEUM CORP.		

