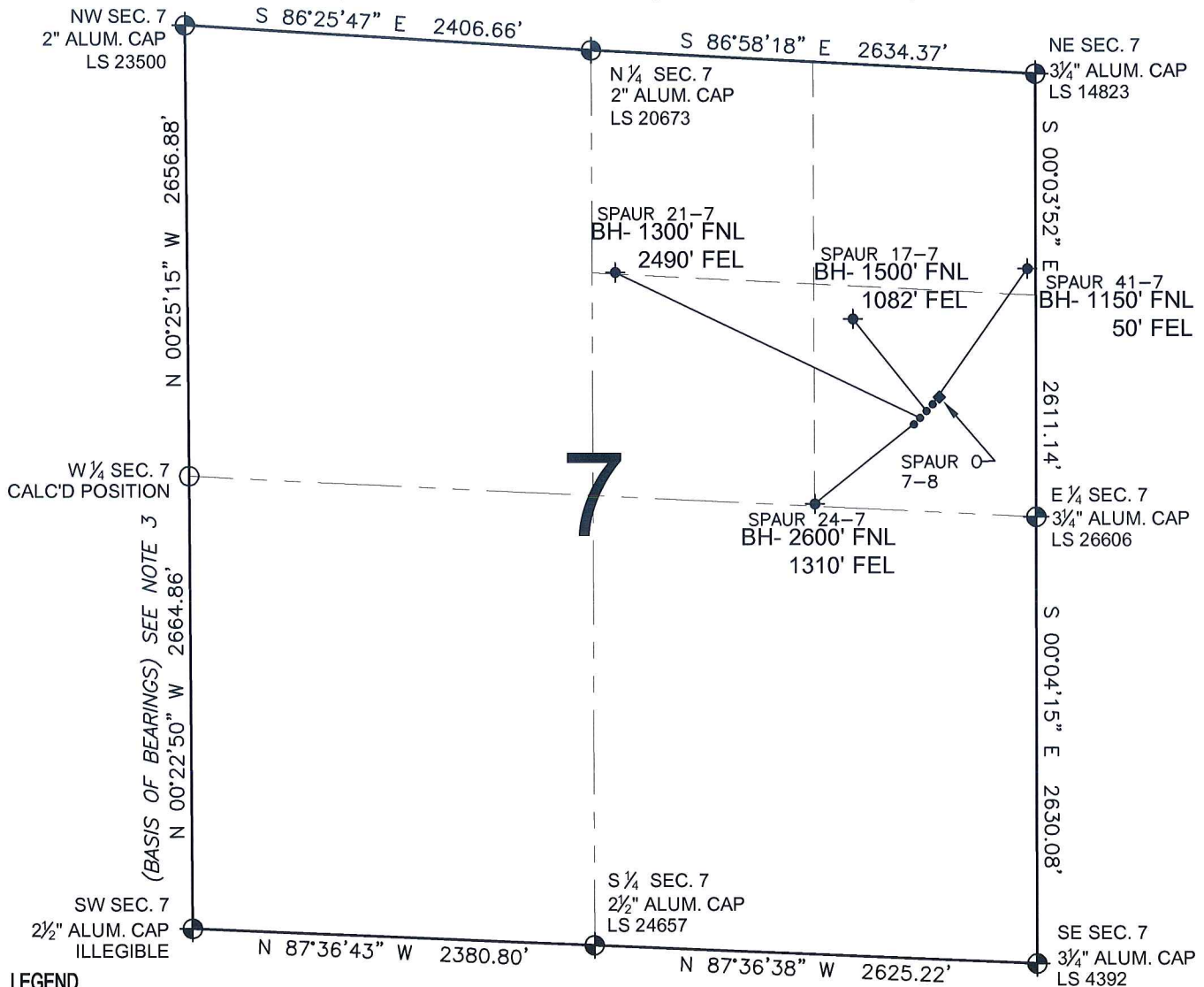


# PAD DRAWING - SPAUR 4- PAD

SECTION 7, TOWNSHIP 4 NORTH, RANGE 67 WEST, 6TH P.M.



## LEGEND

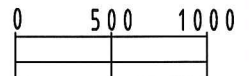
- = EXISTING MONUMENT   
 = BOTTOM HOLE   
 BH= BOTTOM HOLE  
 = PROPOSED WELL   
 = EXISTING WELL

## NOTES:

- THIS SURVEY WAS DONE BY GPS METHODS AND CONFORMS TO THE MINIMUM STANDARDS SET BY THE C.O.G.C.C., RULE NO. 215
- ELEVATIONS SHOWN AT THE WELL HEAD, AS WELL AS HORIZONTAL CONTROL, ARE BASED ON GPS-RTK VALUES DERIVED FROM DOING 2-HOUR STATIC GPS SESSIONS AND REDUCTIONS USING O.P.U.S. SOLUTIONS.  
VERTICAL = NAVD88; HORIZONTAL = NAD83/92
- THE BEARINGS SHOWN HEREON ARE BASED ON GPS OBSERVATIONS BETWEEN THE MONUMENTS SHOWN HEREON AS FOUND ON THE FIELD DATE BELOW.
- DISTANCES SHOWN ARE AT GROUND LEVEL, AS MEASURED IN THE FIELD, WITH TIES TO WELLS MEASURED AT A PERPENDICULAR TO SECTION LINES.

## NOTES:

- SPAUR 24-7 TO BE AT 2013' FNL, 646' FEL.  
 BOTTOM HOLE AT 2600' FNL & 1310' FEL.  
 SPAUR 21-7 TO BE AT 2001' FNL, 635' FEL.  
 BOTTOM HOLE AT 1300' FNL & 2490' FEL.  
 SPAUR 17-7 TO BE AT 1989' FNL, 624' FEL.  
 BOTTOM HOLE AT 1500' FNL & 1082' FEL.  
 SPAUR 41-7 TO BE AT 1977' FNL, 613' FEL.  
 BOTTOM HOLE AT 1150' FNL & 50' FEL.  
 SPAUR O 7-8 IS 1964' FNL, 602' FEL.



SCALE: 1"=1000'

## REVISIONS

INITIAL	DATE

PREPARED BY:

**PFS**

Petroleum Field Services, LLC  
1801 W. 13th Ave.  
Denver, CO 80204



KERR-MCGEE OIL & GAS ONSHORE LP

FIELD DATE:  
03-12-10

DRAWING DATE:  
03-15-10

BY:  
SMF

PAD NAME:  
SPAUR 4 PAD

SURFACE LOCATION:

WELD COUNTY, COLORADO  
SE 1/4 NE 1/4, SEC. 7, T4N, R67W