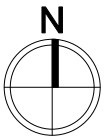




#### DESCRIPTION

- A. Relocated JR tank battery (lat. 40.299670, long. W -104.673122) approx. 1243' FWL, 1995' FNL
- B. House 360' SEOL
- C. Access Road 35' EOL
- D. Tank battery to be relocated



#### Legend:

- Overhead Power Line
- .... Access Road



DATE

4/5/2010

Prepared By: Dave Haertel

#### 400 ft. Radius Map JR Tank Battery

SWNW, ground elevation 4853'  
**Surface Location: T4N R65W 21**  
 Description of surface Uses: CROPLAND