



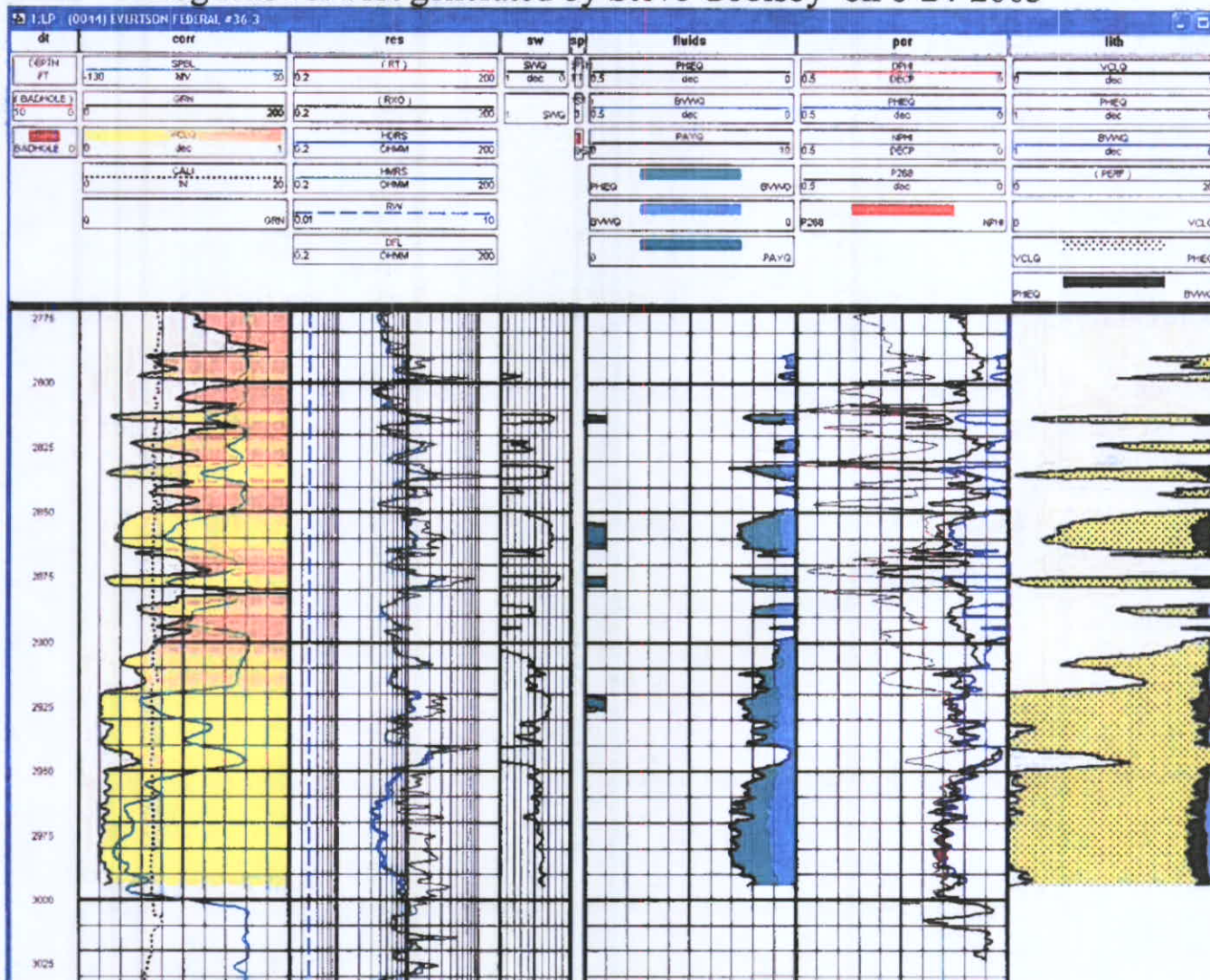
(1)



Evertson Fed #36-3

269' FNL and 3,177' FWL
NWNE Section 36-T1S-R2E
Mesa County, Colorado
Fed Lease # COC 64952
API Number: 05-077-08792-00

Log Answer Plot generated by Steve Goolsby on 6-24-2003



Well came in structurally 140' high. Had an oil show from a Mancos Shale fracture not visable on logs, poor shows in the Dakota, logs showed sands were thin & tight, or low resistivity. Well was D&A'd.

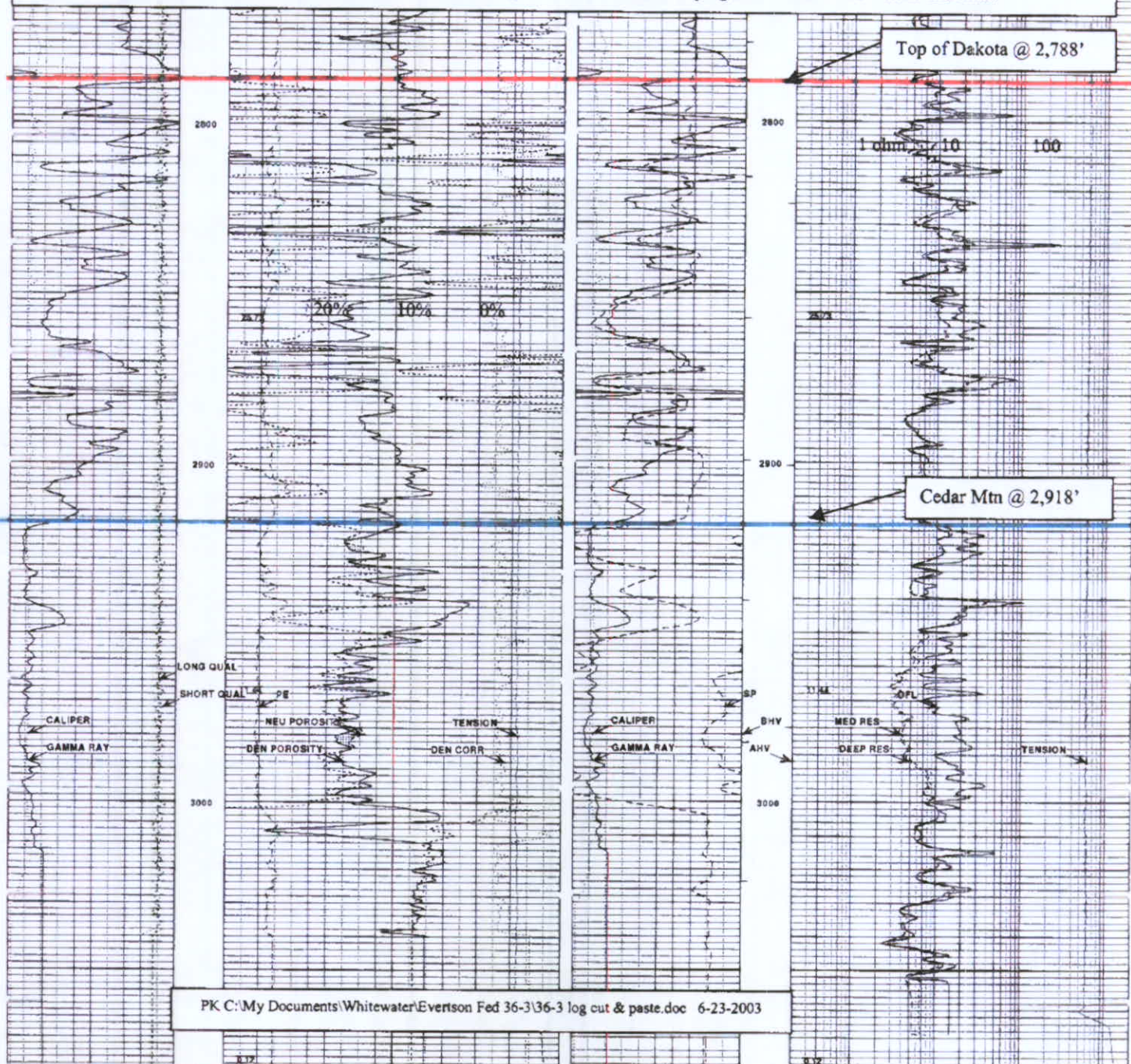
Evertson Fed #36-3

NWNE Sec. 36-1S-2E, Mesa Co., Colo.

GR 5,349' KB: 5,361' (12')

The oil show that was seen in the Mancos at 2,514' can not be identified on the open hole logs, and must be from a fracture, which would probably mean a very limited reservoir capacity, is doubtful that an economic completion could be done and is recommended to not attempt a completion on it.

The Dakota came in 142' high, which must be due to faulting in this area. There were no appreciable shows and the sands do not appear to be developed enough to warrant a completion. Unfortunately, it is recommended to plug and abandon this well at this time.



PK C:\My Documents\Whitewater\Evertson Fed 36-3\36-3 log cut & paste.doc 6-23-2003

LONG QUAL	PE	TENSION
SHORT QUAL	NEU POROSITY	POUNDS
CALIPER	DEN POROSITY	DEN CORR
GAMMA RAY	DEN POROSITY	GM/CC
API COUNTS		

SP	BHV	TENSION
CALIPER	AHV	POUNDS
GAMMA RAY		DEN CORR
API COUNTS		GM/CC

HALLIBURTON

Version No: 5.2 / 04-3.0
Data File: evertson_36_3.3.418
Format File: plot_1.4.spe
Plot Time: 2003-06-23 04:27:09
Log Time: 2003-06-23 05:45:55

Top Depth: 2267.34
Bottom Depth: 3076.38

HALLIBURTON

Version No: 5.2 / 04-3.0
Data File: evertson_36_3.3.418
Format File: plot_1.4.spe
Plot Time: 2003-06-23 04:27:07
Log Time: 2003-06-23 05:45:55

Top Depth: 2268.00
Bottom Depth: 3076.38