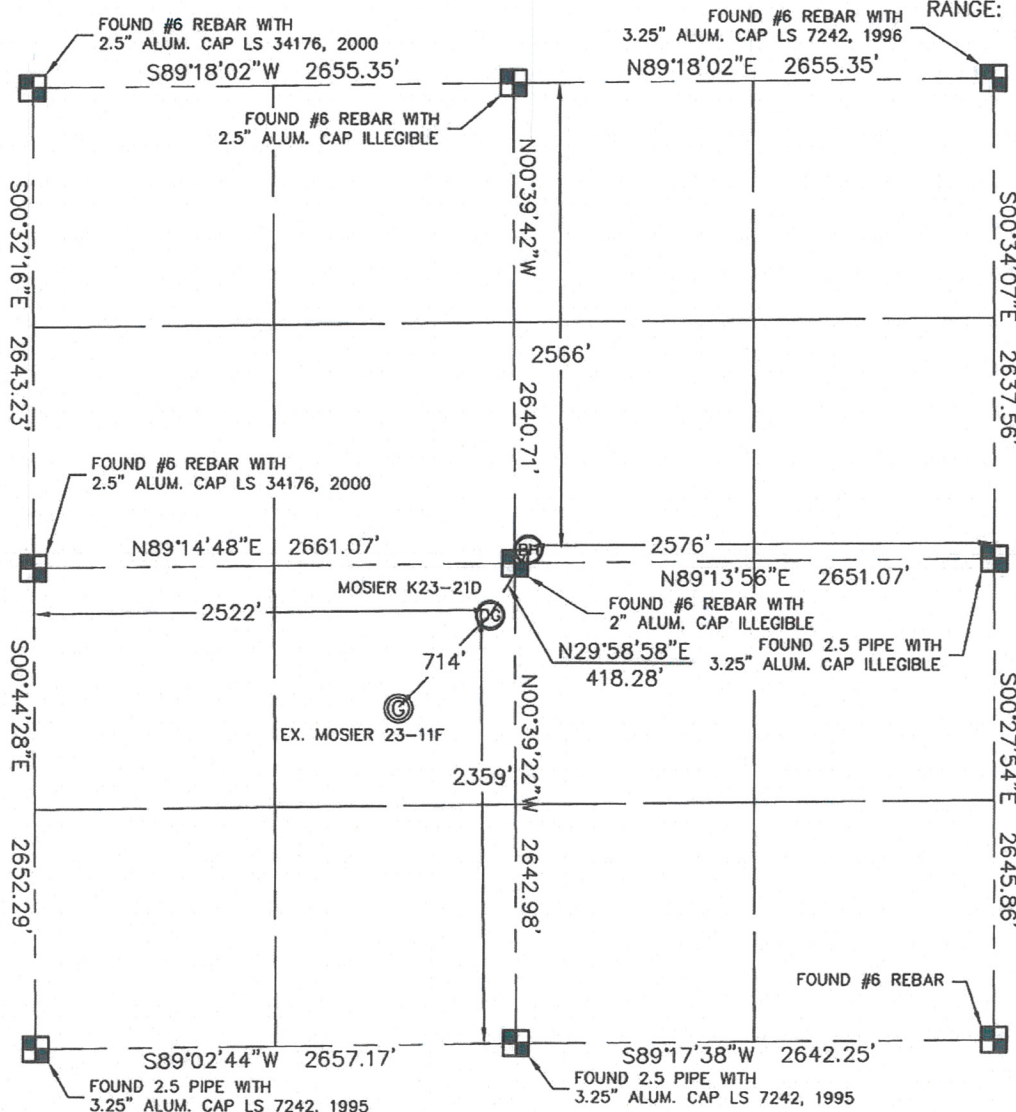


KING SURVEYORS, INC. 650 E. GARDEN DR. WINDSOR, CO 80550

## WELL LOCATION CERTIFICATE

THIS MAP DOES NOT REPRESENT A BOUNDARY SURVEY

SECTION: 23  
TOWNSHIP: 4N  
RANGE: 66W



In accordance with a request from JOE MARTIN with Noble Energy Inc. King Surveyors Inc. has determined the surface location of the MOSIER K23-21D to be 2359' from the SOUTH line and 2522' from the WEST line and the bottom hole to be 2566' from the NORTH line and 2576' from the EAST line as measured at right angles from the section line of Section 23, Township 4 North, Range 66 West of the Sixth Principal Meridian, County of Weld, State of Colorado. I hereby state that this Well Location Certificate was prepared by me, or under my direct supervision, that the fieldwork was completed on 9-23-09, for and on behalf of Noble Energy Inc. That this is not a Land Survey Plat or an Improvement Survey Plat, and that it is not to be relied upon for establishment of fence, building, or other future improvement lines.

### NOTE:

- 1) Bearings shown are Grid Bearings of the Colorado State Plane Coordinate System, North Zone, North American Datum 1983/2007. The lineal dimensions as contained herein are based upon the "U.S. Survey Foot."
- 2) Ground elevations are based on an observed GPS elevation (NAVD 1988 DATUM).
- 3) NEAREST EXISTING WELL: MOSIER 23-11F 714' SOUTHWEST
- 4) IMPROVEMENTS: See VISIBLE IMPROVEMENTS exhibit for all visible improvements within 400' of well head.
- 5) SURFACE USE: PASTURE AND CROP FIELD

### NOTE

According to Colorado law, you must commence any legal action based upon any defect in this W.L.C. within three years after you discover such defect. In no event, may any action based upon any defect in this survey be commenced more than ten years after the date of the certificate shown hereon. (13-80-105 C.R.S.)

### LEGEND

- = ALIQUOT MONUMENT AS DESCRIBED
- = CALCULATED POSITION

SURFACE LOCATION  
LATITUDE: 40.29664N  
LONGITUDE: 104.74493W  
PDOP: 1.2  
ELEV: 4726  
1/4, 1/4: NE 1/4 SW 1/4

BOTTOM HOLE  
LATITUDE: 40.29763N  
LONGITUDE: 104.74417W

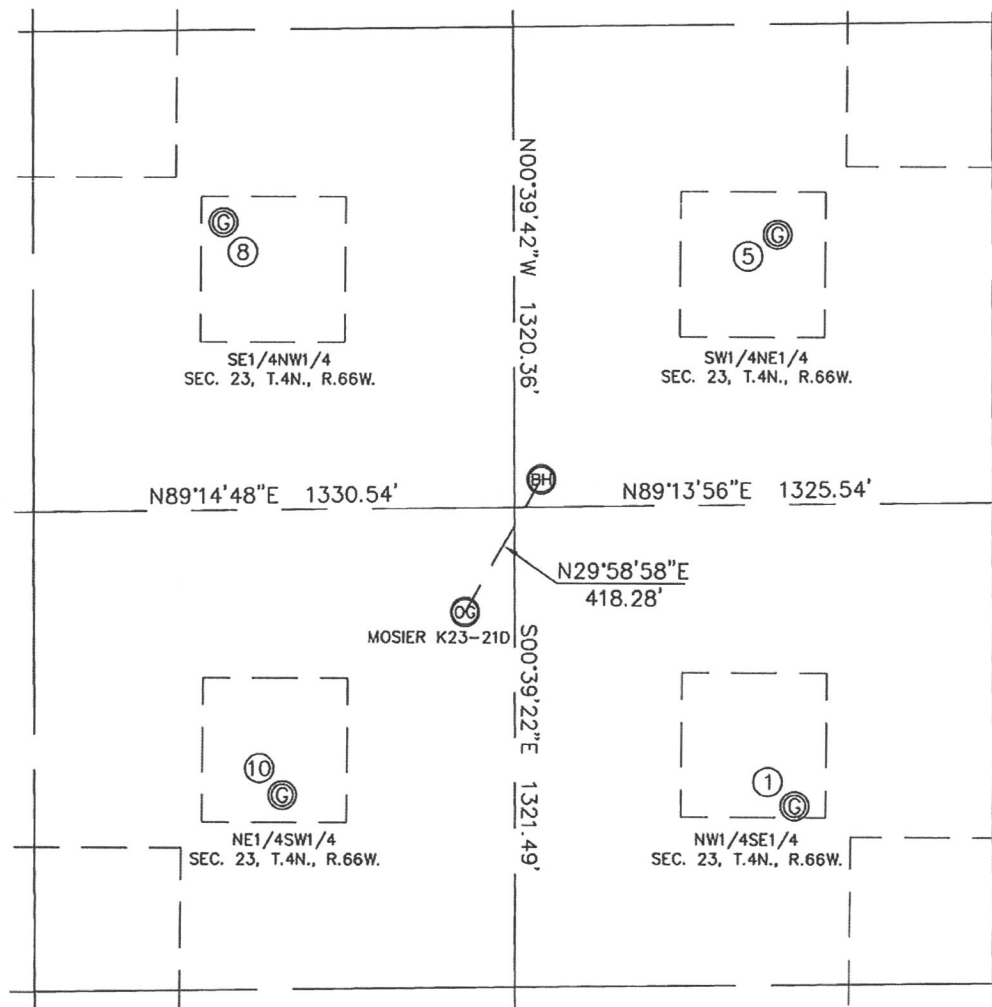
NEAREST PROPERTY LINE: 138' EAST

Steven A. Lund - On behalf of King Surveyors, Inc.  
Licensed Land Surveyor No. 34995  
State of Colorado

PROJECT#: 2009323

KING SURVEYORS, INC. 650 E. GARDEN DR. WINDSOR, CO 80550  
**SITE SKETCH**

SECTION: 23  
 TOWNSHIP: 4N  
 RANGE: 66W



①  
 HSR-VICKI 10-23  
 NW1/4SE1/4  
 1813' FSL  
 1873' FEL  
 LAT-40.29515°N  
 LONG-104.74165°W  
 PDOP: 1.2  
 ELEV: 4730

⑤  
 CARLSON 23-7F  
 SW1/4NE1/4  
 1899' FNL  
 1920' FEL  
 LAT-40.29946°N  
 LONG-104.74182°W  
 PDOP: 1.3  
 ELEV: 4724

⑧  
 HSR-RUZICANO 6-23  
 SE1/4NW1/4  
 1851' FNL  
 1857' FWL  
 LAT-40.29958°N  
 LONG-104.74732°W  
 PDOP: 1.2  
 ELEV: 4725

⑩  
 MOSIER 23-11F  
 NE1/4SW1/4  
 1858' FSL  
 2016' FWL  
 LAT-40.29525°N  
 LONG-104.74674°W  
 PDOP: 1.6  
 ELEV: 4728

