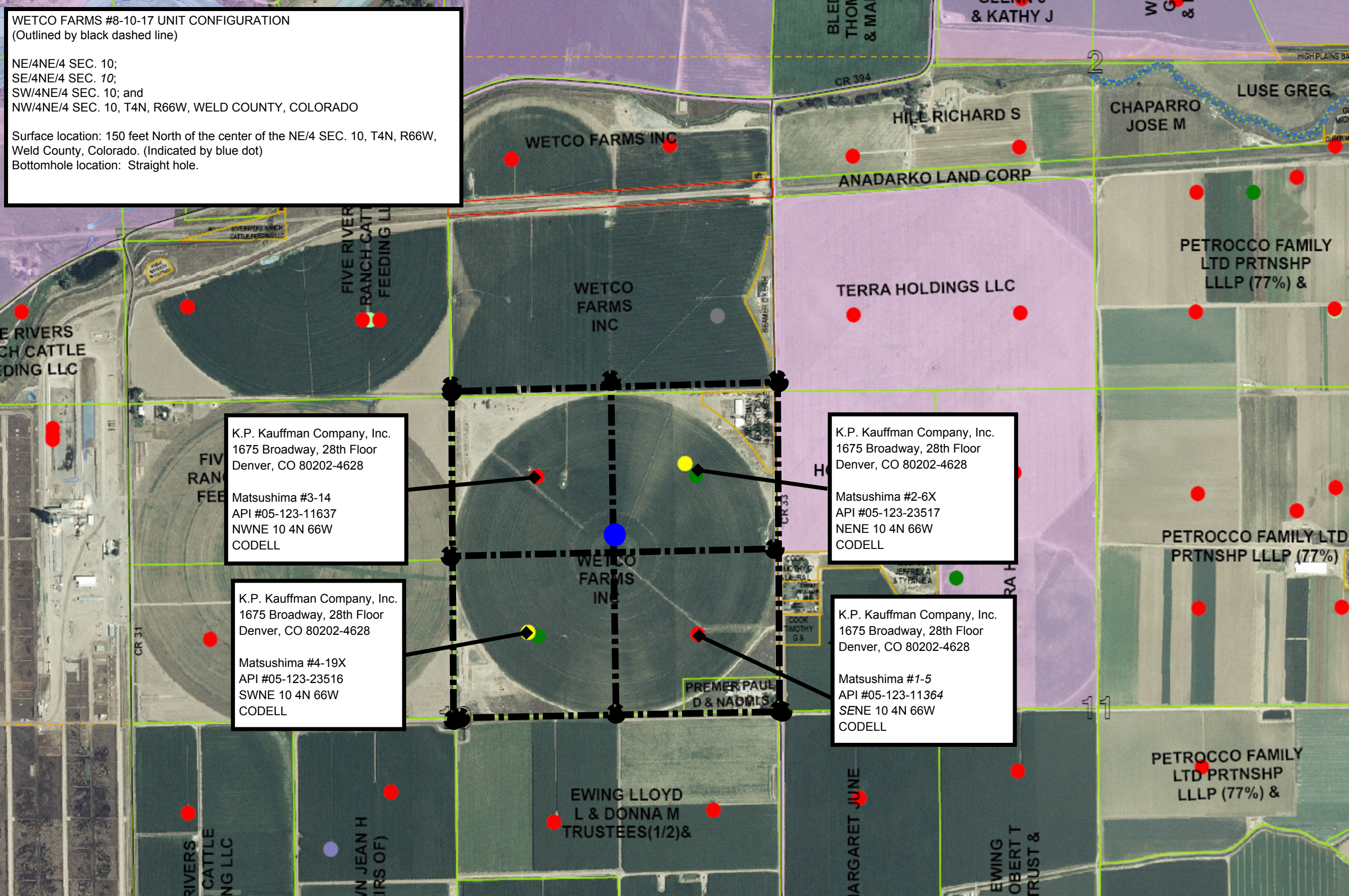


WETCO FARMS #8-10-17 UNIT CONFIGURATION  
(Outlined by black dashed line)

NE/4NE/4 SEC. 10;  
SE/4NE/4 SEC. 10;  
SW/4NE/4 SEC. 10; and  
NW/4NE/4 SEC. 10, T4N, R66W, WELD COUNTY, COLORADO

Surface location: 150 feet North of the center of the NE/4 SEC. 10, T4N, R66W, Weld County, Colorado. (Indicated by blue dot)  
Bottomhole location: Straight hole.



K.P. Kauffman Company, Inc.  
1675 Broadway, 28th Floor  
Denver, CO 80202-4628

Matsushima #3-14  
API #05-123-11637  
NWNE 10 4N 66W  
CODELL

K.P. Kauffman Company, Inc.  
1675 Broadway, 28th Floor  
Denver, CO 80202-4628

Matsushima #4-19X  
API #05-123-23516  
SWNE 10 4N 66W  
CODELL

K.P. Kauffman Company, Inc.  
1675 Broadway, 28th Floor  
Denver, CO 80202-4628

Matsushima #2-6X  
API #05-123-23517  
NENE 10 4N 66W  
CODELL

K.P. Kauffman Company, Inc.  
1675 Broadway, 28th Floor  
Denver, CO 80202-4628

Matsushima #1-5  
API #05-123-11364  
SENE 10 4N 66W  
CODELL