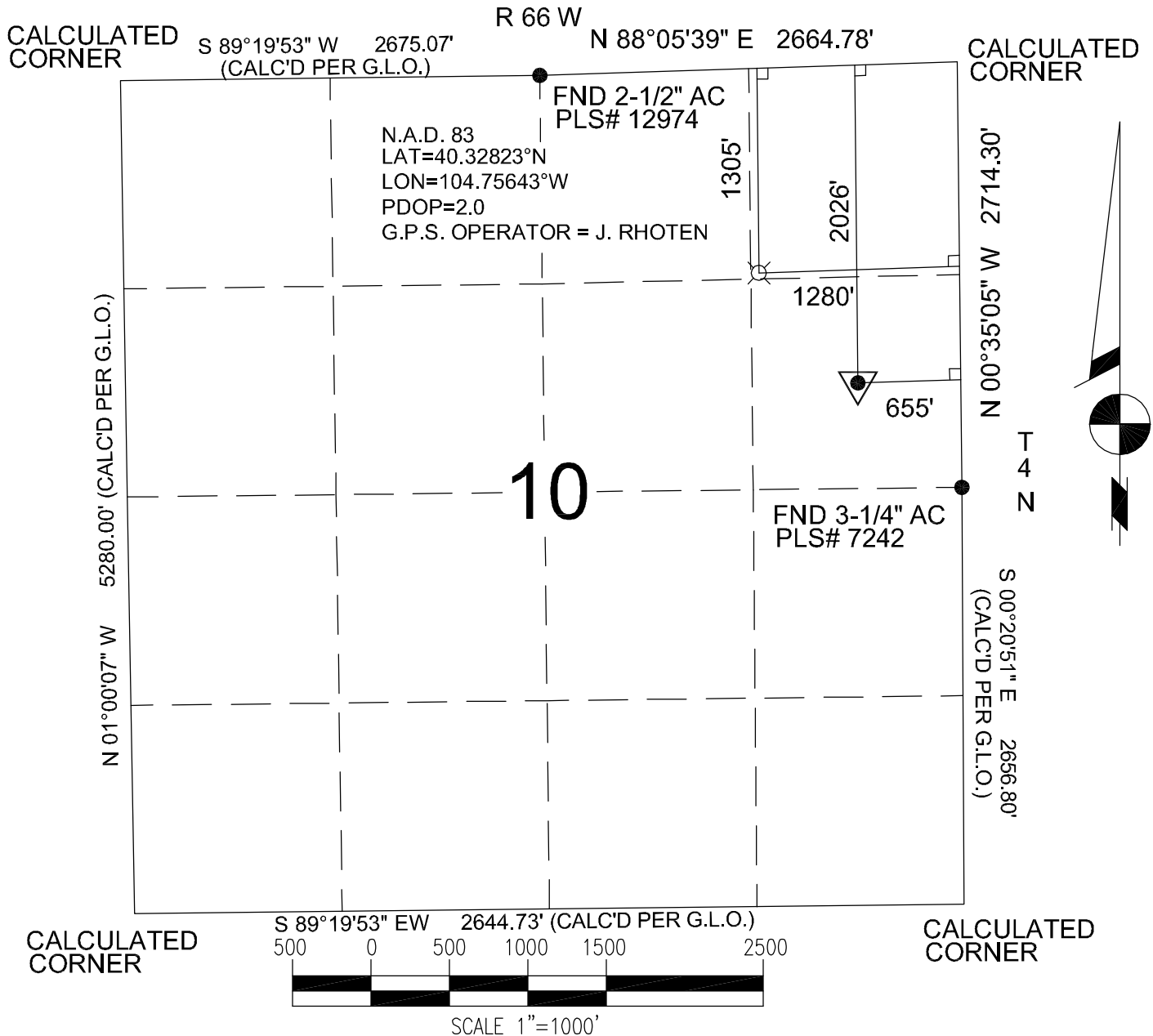


BASIS OF BEARINGS: THE EAST LINE OF THE NE 1/4 OF SECTION 10, AS SHOWN HEREON.



Power Surveying Co., Inc. of Frederick, Colorado has in accordance with a request from MIKE PRITCHARD for KP KAUFFMAN determined the location of WETCO FARMS 8-10-17 to be 2026' FNL & 655' FEL Section 10, Township 4 NORTH Range 66 WEST of the Sixth Principal Meridian, WELD County, Colorado

#### LOCATION NOTES

LOCATION FALLS IN: CORN FIELD

IMPROVEMENTS: EXISTING WELL 25' NE OF LOCATION

ELEVATION DETERMINED FROM NAVD 1988 DATUM.  
GROUND ELEVATION = 4716'

DISTANCES AND BEARINGS ARE FIELD MEASURED  
UNLESS OTHERWISE NOTED.

#### LEGEND

- SECTION CORNER (AS NOTED)
- ▼ PROPOSED WELL LOCATION
- ⊗ BOTTOM HOLE



7800 MILLER DRIVE, UNIT C  
FREDERICK, COLORADO 80504

PH. 303-702-1617  
FAX. 303-702-1488  
WWW.POWERSURVEYING.COM

KEVIN E RANDOLPH  
COLORADO P.L.S. #35581

FIELD DATE: 7-12-07 WO# 501-06-1131  
DATE OF COMPLETION: 7-17-07  
REVISED : 1-15-2009 (NAME CHANGE)