

K. P. Kauffman Company, Inc.

Wetco Farms #8-10-24

SENE section 10-T4N-R66W

Weld Co., Colorado

Directional plot

# Well Plan

Well Name	Vertical Section Azimuth	Units
Wetco Farms #8-10-24	224.32	ft,°/100ft

www.makinhole.com

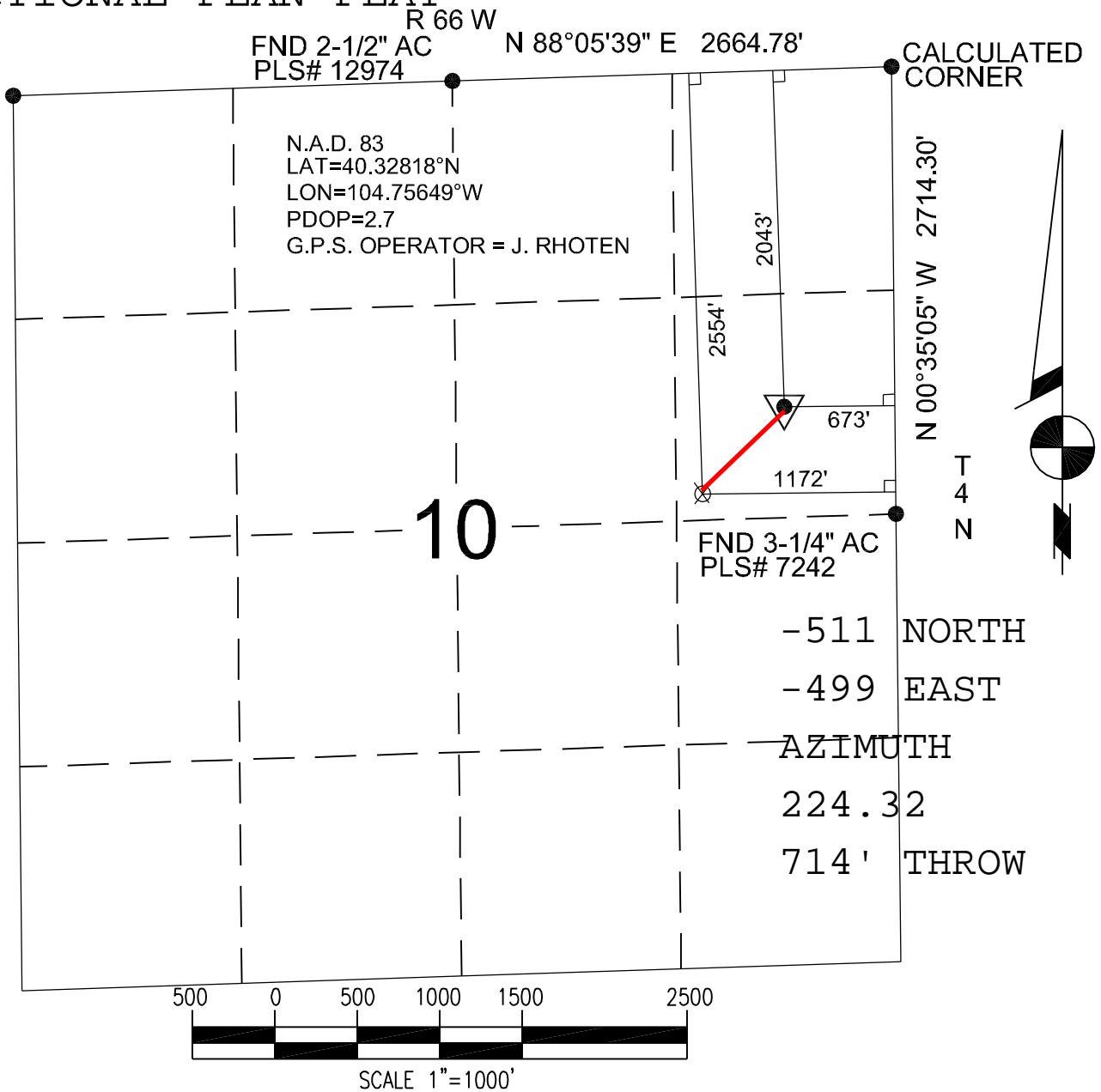
MD*	INC*	AZI*	TVD*	N*	E*	DLS*	Vert. Sec.*	Description	Reference Note
0.00	0.00	0.0	0.00	0.00	0.00		0.00	tie point RKB	
100.00	0.00	0.0	100.00	0.00	0.00	0.00	0.00	vertical	
200.00	0.00	0.0	200.00	0.00	0.00	0.00	0.00	vertical	
300.00	0.00	0.0	300.00	0.00	0.00	0.00	0.00	vertical	
400.00	0.00	0.0	400.00	0.00	0.00	0.00	0.00	vertical	
500.00	0.00	0.0	500.00	0.00	0.00	0.00	0.00	vertical	
600.00	0.00	0.0	600.00	0.00	0.00	0.00	0.00	vertical	
700.00	0.00	0.0	700.00	0.00	0.00	0.00	0.00	vertical	
800.00	0.00	0.0	800.00	0.00	0.00	0.00	0.00	vertical	
900.00	0.00	0.0	900.00	0.00	0.00	0.00	0.00	vertical	
1000.00	0.00	0.0	1000.00	0.00	0.00	0.00	0.00	vertical	
1100.00	0.00	0.0	1100.00	0.00	0.00	0.00	0.00	vertical	
1200.00	0.00	0.0	1200.00	0.00	0.00	0.00	0.00	End vertical KOP	
1300.00	2.50	224.3	1299.97	-1.56	-1.52	2.50	2.18	build	
1400.00	5.00	224.3	1399.75	-6.24	-6.09	2.50	8.72	build	
1500.00	7.50	224.3	1499.14	-14.03	-13.70	2.50	19.61	build	
1600.00	10.00	224.3	1597.97	-24.91	-24.33	2.50	34.82	build	
1700.00	12.50	224.3	1696.04	-38.87	-37.95	2.50	54.33	build	
1800.00	15.00	224.3	1793.17	-55.87	-54.56	2.50	78.09	build	
1900.00	17.50	224.3	1889.17	-75.89	-74.11	2.50	106.07	build	
2000.00	20.00	224.3	1983.85	-98.89	-96.56	2.50	138.21	build	
2100.00	22.50	224.3	2077.05	-124.82	-121.88	2.50	174.46	build	
2200.00	25.00	224.3	2168.57	-153.63	-150.02	2.50	214.73	build	
2300.00	27.50	224.3	2258.25	-185.27	-180.92	2.50	258.95	build	
2400.00	30.00	224.3	2345.92	-219.68	-214.52	2.50	307.05	build	
2470.00	31.75	224.3	2405.99	-245.38	-239.62	2.50	342.97	End build TOP OF BUILD	
2500.00	31.06	224.3	2431.60	-256.56	-250.54	2.31	358.60	drop	
2600.00	28.75	224.3	2518.28	-292.23	-285.37	2.31	408.45	drop	
2700.00	26.44	224.3	2606.90	-325.36	-317.72	2.31	454.76	drop	

MD*	INC*	AZI*	TVD*	N*	E*	DLS*	Vert. Sec.*	Description	Reference Note
2800.00	24.13	224.3	2697.31	-355.92	-347.56	2.31	497.47	drop	
2900.00	21.82	224.3	2789.38	-383.84	-374.83	2.31	536.50	drop	
3000.00	19.51	224.3	2882.94	-409.09	-399.48	2.31	571.79	drop	
3100.00	17.20	224.3	2977.84	-431.62	-421.49	2.31	603.28	drop	
3200.00	14.89	224.3	3073.94	-451.40	-440.80	2.31	630.92	drop	
3300.00	12.58	224.3	3171.07	-468.39	-457.39	2.31	654.67	drop	
3400.00	10.27	224.3	3269.08	-482.56	-471.23	2.31	674.48	drop	
3500.00	7.96	224.3	3367.81	-493.90	-482.30	2.31	690.33	drop	
3600.00	5.65	224.3	3467.10	-502.38	-490.58	2.31	702.18	drop	
3700.00	3.35	224.3	3566.78	-507.99	-496.06	2.31	710.03	drop	
3800.00	1.04	224.3	3666.70	-510.73	-498.74	2.31	713.85	drop	
3833.30	0.00	0.0	3700.00	-511.00	-499.00	2.31	714.23	End drop TOP OF DROP	
3900.00	0.00	0.0	3766.70	-511.00	-499.00	0.00	714.23	vertical	
4000.00	0.00	0.0	3866.70	-511.00	-499.00	0.00	714.23	vertical	
4100.00	0.00	0.0	3966.70	-511.00	-499.00	0.00	714.23	vertical	
4200.00	0.00	0.0	4066.70	-511.00	-499.00	0.00	714.23	vertical	
4300.00	0.00	0.0	4166.70	-511.00	-499.00	0.00	714.23	vertical	
4400.00	0.00	0.0	4266.70	-511.00	-499.00	0.00	714.23	vertical	
4433.30	0.00	0.0	4300.00	-511.00	-499.00	0.00	714.23	End vertical TOP OF SUSSEX	
4500.00	0.00	0.0	4366.70	-511.00	-499.00	0.00	714.23	vertical	
4600.00	0.00	0.0	4466.70	-511.00	-499.00	0.00	714.23	vertical	
4700.00	0.00	0.0	4566.70	-511.00	-499.00	0.00	714.23	vertical	
4800.00	0.00	0.0	4666.70	-511.00	-499.00	0.00	714.23	vertical	
4900.00	0.00	0.0	4766.70	-511.00	-499.00	0.00	714.23	vertical	
4933.30	0.00	0.0	4800.00	-511.00	-499.00	0.00	714.23	End vertical TOP OF SHANNON	
5000.00	0.00	0.0	4866.70	-511.00	-499.00	0.00	714.23	vertical	
5100.00	0.00	0.0	4966.70	-511.00	-499.00	0.00	714.23	vertical	
5200.00	0.00	0.0	5066.70	-511.00	-499.00	0.00	714.23	vertical	
5300.00	0.00	0.0	5166.70	-511.00	-499.00	0.00	714.23	vertical	
5400.00	0.00	0.0	5266.70	-511.00	-499.00	0.00	714.23	vertical	
5500.00	0.00	0.0	5366.70	-511.00	-499.00	0.00	714.23	vertical	

MD*	INC*	AZI*	TVD*	N*	E*	DLS*	Vert. Sec.*	Description	Reference Note
5600.00	0.00	0.0	5466.70	-511.00	-499.00	0.00	714.23	vertical	
5700.00	0.00	0.0	5566.70	-511.00	-499.00	0.00	714.23	vertical	
5800.00	0.00	0.0	5666.70	-511.00	-499.00	0.00	714.23	vertical	
5900.00	0.00	0.0	5766.70	-511.00	-499.00	0.00	714.23	vertical	
6000.00	0.00	0.0	5866.70	-511.00	-499.00	0.00	714.23	vertical	
6100.00	0.00	0.0	5966.70	-511.00	-499.00	0.00	714.23	vertical	
6200.00	0.00	0.0	6066.70	-511.00	-499.00	0.00	714.23	vertical	
6300.00	0.00	0.0	6166.70	-511.00	-499.00	0.00	714.23	vertical	
6400.00	0.00	0.0	6266.70	-511.00	-499.00	0.00	714.23	vertical	
6500.00	0.00	0.0	6366.70	-511.00	-499.00	0.00	714.23	vertical	
6600.00	0.00	0.0	6466.70	-511.00	-499.00	0.00	714.23	vertical	
6700.00	0.00	0.0	6566.70	-511.00	-499.00	0.00	714.23	vertical	
6800.00	0.00	0.0	6666.70	-511.00	-499.00	0.00	714.23	vertical	
6900.00	0.00	0.0	6766.70	-511.00	-499.00	0.00	714.23	vertical	
7000.00	0.00	0.0	6866.70	-511.00	-499.00	0.00	714.23	vertical	
7003.30	0.00	0.0	6870.00	-511.00	-499.00	0.00	714.23	End vertical	TOP OF NIOBRARA
7100.00	0.00	0.0	6966.70	-511.00	-499.00	0.00	714.23	vertical	
7200.00	0.00	0.0	7066.70	-511.00	-499.00	0.00	714.23	vertical	
7300.00	0.00	0.0	7166.70	-511.00	-499.00	0.00	714.23	vertical	
7345.30	0.00	0.0	7212.00	-511.00	-499.00	0.00	714.23	End vertical	TOP OF FT HAYES
7368.30	0.00	0.0	7235.00	-511.00	-499.00	0.00	714.23	End vertical	TOP OF CODELL
7400.00	0.00	0.0	7266.70	-511.00	-499.00	0.00	714.23	vertical	
7500.00	0.00	0.0	7366.70	-511.00	-499.00	0.00	714.23	vertical	
7600.00	0.00	0.0	7466.70	-511.00	-499.00	0.00	714.23	vertical	
7700.00	0.00	0.0	7566.70	-511.00	-499.00	0.00	714.23	vertical	
7800.00	0.00	0.0	7666.70	-511.00	-499.00	0.00	714.23	vertical	
7833.30	0.00	0.0	7700.00	-511.00	-499.00	0.00	714.23	End vertical	TOP OF J-SAND
7900.00	0.00	0.0	7766.70	-511.00	-499.00	0.00	714.23	vertical	
8000.00	0.00	0.0	7866.70	-511.00	-499.00	0.00	714.23	vertical	
8003.30	0.00	0.0	7870.00	-511.00	-499.00	0.00	714.23	End vertical	TD

# DIRECTIONAL PLAN PLAT

BASIS OF BEARINGS: THE EAST LINE OF THE NE 1/4 OF SECTION 10, AS SHOWN HEREON.



Power Surveying Co., Inc. of Frederick, Colorado has in accordance with a request from SHERRY GLASS for KP KAUFFMAN

determined the location of WETCO FARMS 8-10-24

to be 2043' FNL & 673' FEL Section 10, Township 4 NORTH

Range 66 WEST of the Sixth Principal Meridian,  
WELD County, Colorado

## LOCATION NOTES

LOCATION FALLS IN: CORN FIELD

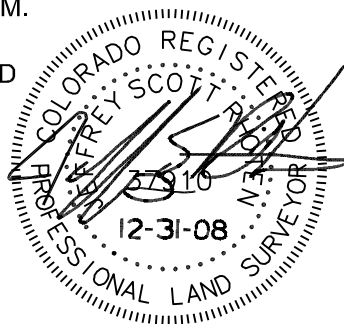
IMPROVEMENTS: AN EXISTING WELL 50 FEET N-E OF LOCATION

ELEVATION DETERMINED FROM NAVD 1988 DATUM.  
GROUND ELEVATION = 4718'

DISTANCES AND BEARINGS ARE FIELD MEASURED  
UNLESS OTHERWISE NOTED.

## LEGEND

- SECTION CORNER (AS NOTED)
- ▼ PROPOSED WELL LOCATION
- ⊗ BOTTOM OF HOLE LOCATION.



7800 MILLER DRIVE UNIT C  
FREDERICK, COLORADO 80504  
303-702-1617

Jeffery Scott Rhoten  
COLORADO P.L.S. #37910

FIELD DATE: 7-12-07 WO# 501-06-1133A  
DATE OF COMPLETION: 12-31-08