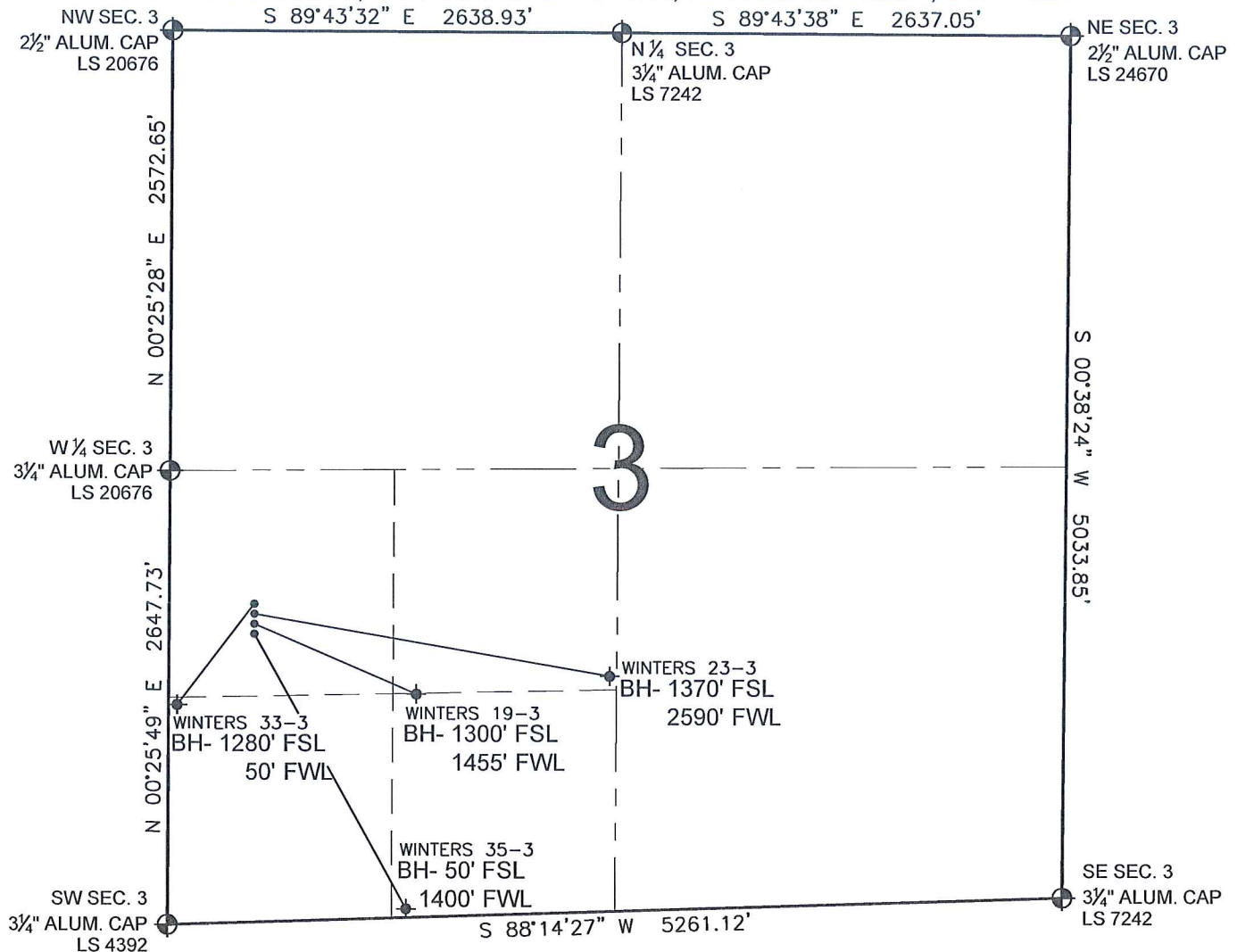


PAD DRAWING - WINTERS 4 PAD

SECTION 3, TOWNSHIP 5 NORTH, RANGE 65 WEST, 6TH P.M.



LEGEND

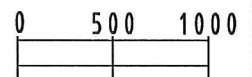
- = EXISTING MONUMENT
 = BOTTOM HOLE
 BH= BOTTOM HOLE
 = PROPOSED WELL
 = EXISTING WELL

NOTES:

- THIS SURVEY WAS DONE BY GPS METHODS AND CONFORMS TO THE MINIMUM STANDARDS SET BY THE C.O.G.C.C., RULE NO. 215
- ELEVATIONS SHOWN AT THE WELL HEAD, AS WELL AS HORIZONTAL CONTROL, ARE BASED ON GPS-RTK VALUES DERIVED FROM DOING 2-HOUR STATIC GPS SESSIONS AND REDUCTIONS USING O.P.U.S. SOLUTIONS.
VERTICAL = NAVD88; HORIZONTAL = NAD83/92
- THE BEARINGS SHOWN HEREON ARE BASED ON GPS OBSERVATIONS BETWEEN THE MONUMENTS SHOWN HEREON AS FOUND ON THE FIELD DATE BELOW.
- DISTANCES SHOWN ARE AT GROUND LEVEL, AS MEASURED IN THE FIELD, WITH TIES TO WELLS MEASURED AT A PERPENDICULAR TO SECTION LINES.

NOTES:

- WINTERS 33-3 TO BE AT 1727' FSL, 499' FWL.
 BOTTOM HOLE AT 1280' FSL & 50' FWL.
 WINTERS 23-3 TO BE AT 1711' FSL, 499' FWL.
 BOTTOM HOLE AT 1370' FSL & 2590' FWL.
 WINTERS 19-3 TO BE AT 1695' FSL, 499' FWL.
 BOTTOM HOLE AT 1300' FSL & 1455' FWL.
 WINTERS 35-3 TO BE AT 1679' FSL, 499' FWL.
 BOTTOM HOLE AT 50' FSL & 1400' FWL.



SCALE: 1"=1000'

REVISIONS

INITIAL	DATE

PREPARED BY:

PFS

Petroleum Field Services, LLC
1801 W. 13th Ave.
Denver, CO 80204



KERR-MCGEE OIL & GAS ONSHORE LP

FIELD DATE:
02-16-10

DRAWING DATE:
02-18-10

BY:
SMF

PAD NAME:
WINTERS 4 PAD

SURFACE LOCATION:

WELD COUNTY, COLORADO
NW 1/4 SW 1/4, SEC. 3, T5N, R65W