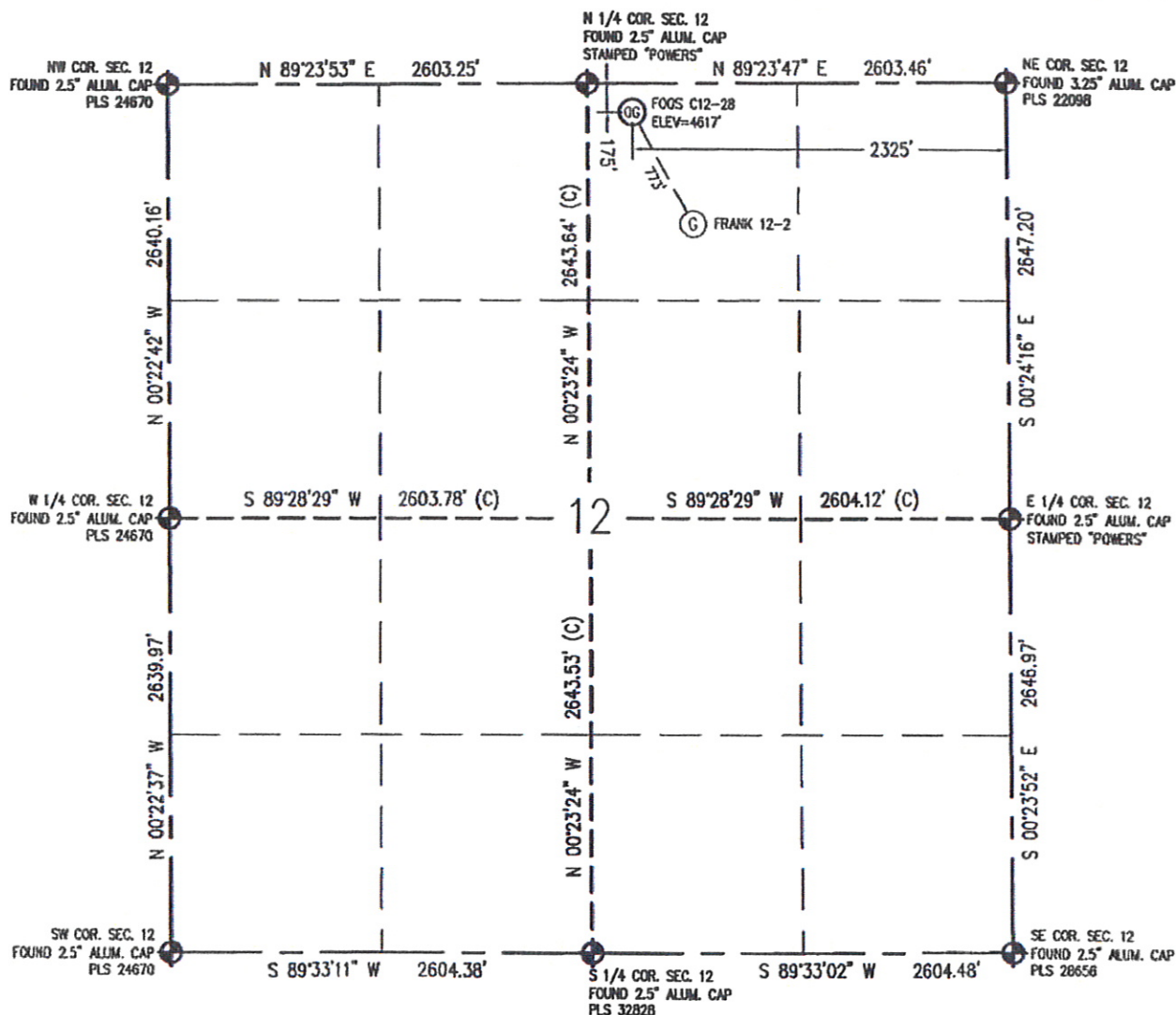


Baseline Engineering Corp. 710 11th Avenue Suite 105 Greeley, Colorado 80631

# WELL LOCATION CERTIFICATE

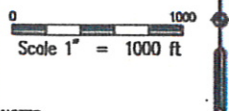
THIS MAP DOES NOT REPRESENT A BOUNDARY SURVEY

SECTION 12  
TOWNSHIP 4 NORTH  
RANGE 64 WEST



IN ACCORDANCE WITH A REQUEST FROM ERIK VANDECAR - NOBLE ENERGY INC, BASELINE ENGINEERING CORP. HAS DETERMINED THE LOCATION OF THE FOOS C12-28 TO BE 175' FNL AND 2325' FEL, AS MEASURED AT NINETY (90) DEGREES FROM THE SECTION LINE OF SECTION 12, TOWNSHIP 4 NORTH, RANGE 64 WEST, 6TH PRINCIPAL MERIDIAN, WELD COUNTY, COLORADO.

I HEREBY CERTIFY THAT THIS WELL LOCATION CERTIFICATE WAS PREPARED BY ME, OR UNDER MY DIRECT SUPERVISION, THAT THE FIELD WORK WAS COMPLETED ON 12/30/2009, THAT IT IS NOT A LAND SURVEY PLAT OR AN IMPROVEMENT SURVEY PLAT, AND THAT IT IS NOT TO BE RELIED UPON FOR ESTABLISHMENT OF FENCE, BUILDING, OR OTHER FUTURE IMPROVEMENT LINES.



## NOTES:

- 1) LAT/LONG SHOWN ARE BASED ON A GPS OBSERVATION (NAD83).
- 2) BEARINGS SHOWN ARE GRID BEARINGS OF THE COLORADO STATE PLANE COORDINATE SYSTEM, NORTH ZONE, NORTH AMERICAN DATUM 1983/2007.
- 3) GROUND ELEVATIONS ARE BASED ON A GPS OBSERVATION (NAVD 88 DATUM).
- 4) ALL DISTANCES SHOWN ARE FIELD MEASURED UNLESS OTHERWISE NOTED.
- 5) THE NEAREST EXISTING WELL IS: FRANK 12-2, 773' SOUTHEAST.
- 6) IMPROVEMENTS: SEE VISIBLE IMPROVEMENTS EXHIBIT FOR ALL VISIBLE IMPROVEMENTS WITHIN 400' OF WELL HEAD.
- 7) SURFACE USE: CULTIVATED FIELD.

NOTICE: According to Colorado law you MUST commence any legal action based upon any defect in this WLLC within three years after you first discover such defect. In no event may any action based upon any defect in this WLLC be commenced more than ten years from this said date of the certification shown herein.

SURFACE HOLE:  
LATITUDE: 40.333689° N  
LONGITUDE: 104.497922° W  
PDOP: 1.3  
1/4, 1/4: NW1/4NE1/4  
NEAREST PROPERTY LINE: 175' N

## LEGEND

- - FOUND/SET SURVEY MONUMENT PER MONUMENT RECORD EXCEPTIONS NOTED.
- - CALCULATED SURVEY MONUMENT POSITION
- (c) - CALCULATED DIMENSION



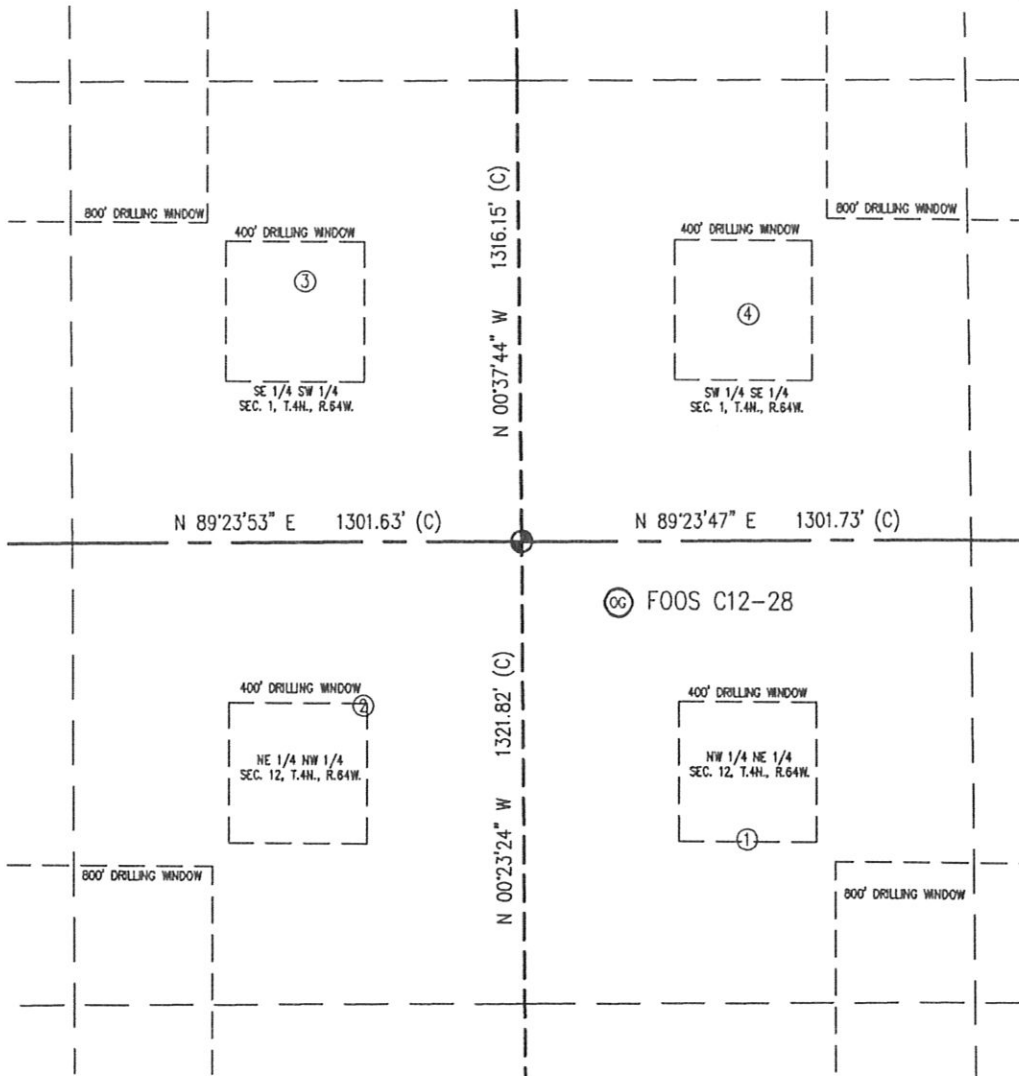
John C. Barickman  
Professional Land Surveyor Registration No. 28258  
State of Colorado  
FOR AND ON BEHALF OF BASELINE ENGINEERING CORP.

Completed  
12/31/2009

JOB #NOB4N64W12-01

# SITE SKETCH

SECTION 12  
TOWNSHIP 4 NORTH  
RANGE 64 WEST



①

FRANK 12-2  
NW1/4 NE1/4 SECTION 12  
855' FNL SECTION 12  
1955' FEL SECTION 12  
EL=4621'  
LATITUDE: 40.331822° N  
LONGITUDE: 104.496605° W  
PDOP: 2.5

②

MILLAGE 12-3  
NE1/4 NW1/4 SECTION 12  
469' FNL SECTION 12  
2142' FWL SECTION 12  
EL=4618'  
LATITUDE: 40.332884° N  
LONGITUDE: 104.500579° W  
PDOP: 5.5

③

HAPPYTALK 2  
SE1/4 SW1/4 SECTION 1  
744' FSL SECTION 1  
1979' FWL SECTION 1  
EL=4615'  
LATITUDE: 40.336214° N  
LONGITUDE: 104.501139° W  
PDOP: 5.6

④

FHA 15-1  
SW1/4 SE1/4 SECTION 1  
646' FSL SECTION 1  
1938' FEL SECTION 1  
EL=4614'  
LATITUDE: 40.335942° N  
LONGITUDE: 104.496528° W  
PDOP: 3.7

## NOTES:

- 1) THIS SKETCH DOES NOT REPRESENT A BOUNDARY SURVEY.
- 2) THE DATUM FOR THE LATITUDES AND LONGITUDES ON THIS SKETCH IS NAD83.

