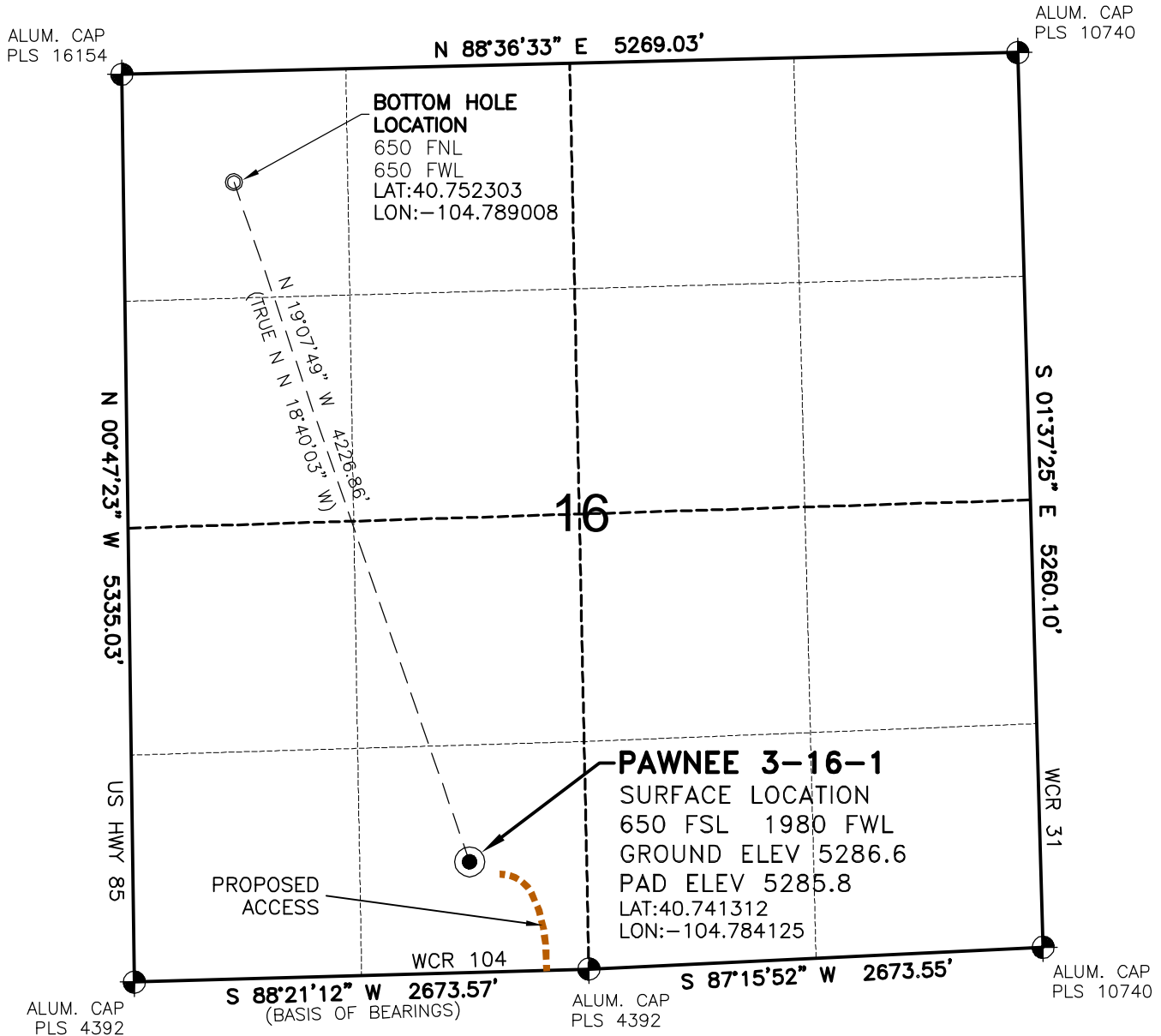


# WELL LOCATION MAP

PAWNEE 3-16-1 PAD



## SURVEYOR'S STATEMENT

The undersigned hereby states that the well location shown hereon was staked on the ground based on existing monumentation and/or physical evidence found in the field and is correct to the best of my knowledge, information and belief.

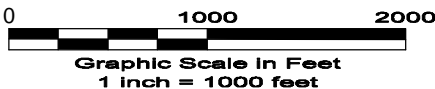


## NOTES

- 1.) Horizontal coordinates based on NGS control point "HORA" and vertical datum based on NGS control point "P 390" with an elevation of 5199.21. NAVD 1988.
- 2.) All directions, distances, and dimensions shown hereon are based on coordinates from the "Colorado coordinate system of 1983 north zone" (article 52 of title 38, C.R.S.).
- 3.) All section line dimensions shown hereon are based on field measurements of existing monuments and/or physical evidence found in the field unless otherwise indicated. Refer to land survey plats deposited in Weld County.
- 4.) Physical features shown hereon are for graphical representation only.
- 5.) See Form 2A for visible improvements within 400' of wellhead.
- 6.) Distances to nearest section lines are measured perpendicularly.
- 7.) This is not a land survey nor land survey plat.
- 8.) Date of Survey 3/18/10; Date of Drawing 3/25/10. REV 0

PDOP Reading: 2.0 Instrument Operator: DJM

3/25/10



**GEO SURV**

LAND SURVEYING AND MAPPING  
LAFAYETTE - WINTER PARK  
Ph 303 666 0379 Fx 303 665 6320

**RUBICON OIL & GAS LLC**  
PAWNEE 3-16-1

SL SE1/4 SW1/4 SEC. 16 T9N R66W  
BL NW1/4 NW1/4 SEC. 16 T9N R66W  
6th PM WELD COUNTY COLORADO

# PAD LAYOUT

PAWNEE 3-16-1 PAD

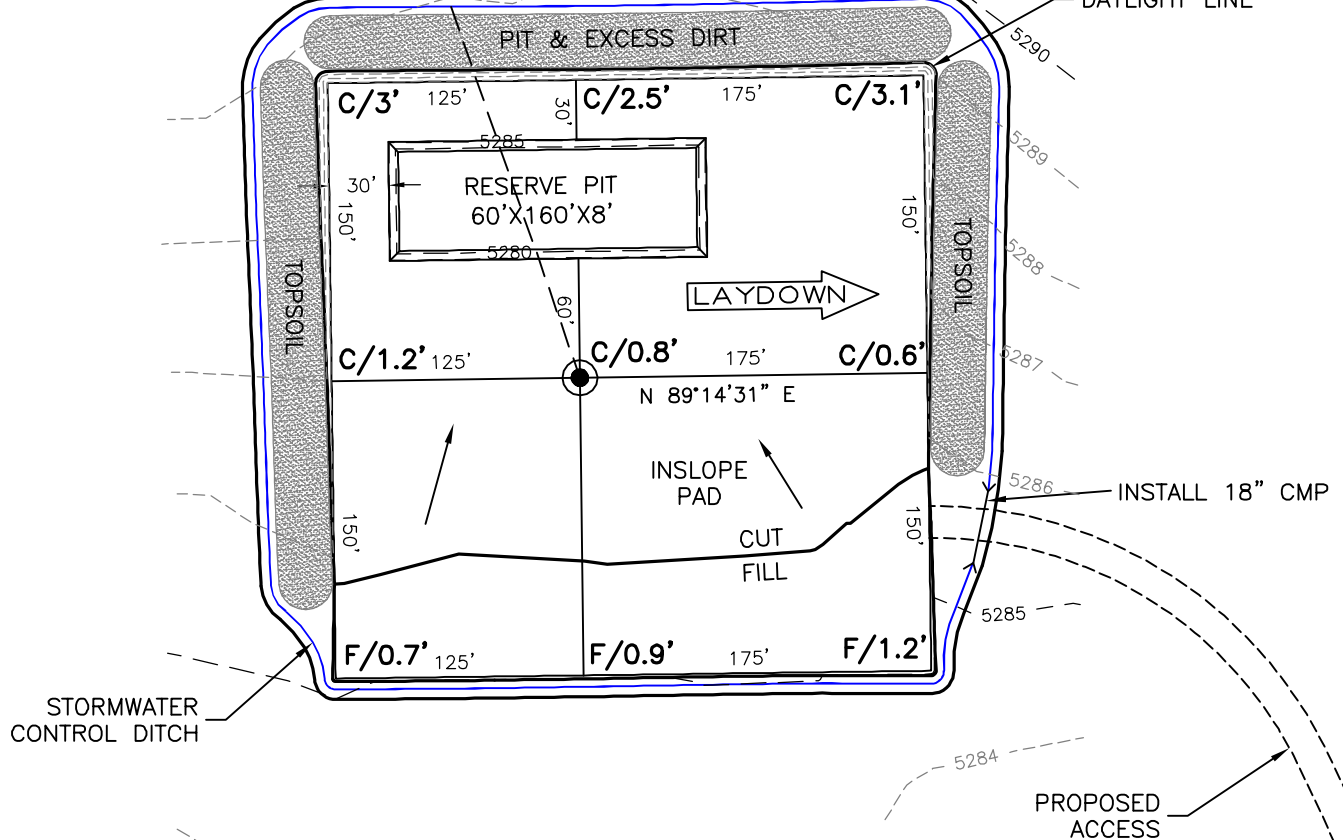
**VEGETATION:**  
CRP

**SURFACE USE:**  
AGRICULTURAL/FALLOW FIELD

PROPOSED DIRECTIONAL  
ALIGNMENT PAWNEE 3-16-1  
N 19°07'49" W 4226.86'

LIMIT OF  
DISTURBANCE

DAYLIGHT LINE



## NOTES:

- 1) 10% ALLOWANCE IS MADE FOR SOIL EXPANSION.
- 2) PIT LOCATION & SIZE TO BE DETERMINED AT TIME OF CONSTRUCTION.

PAD 300'x300' ELEV= 5285.8

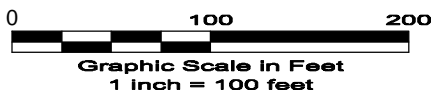
DISTURBED AREA= 3.0 ACRES

ESTIMATED DIRT QUANTITIES

CUTx10%	FILL	PIT	TOPSOIL	EXCESS
4,030	320	2,780	3,475	235

NOTE: VOLUMES IN CUBIC YARDS. TOPSOIL INCLUDED IN VOLUMES AT A DEPTH OF 12". PIT NOT INCLUDED IN TOTAL EXCESS.

3/25/10



**GEO SURV**

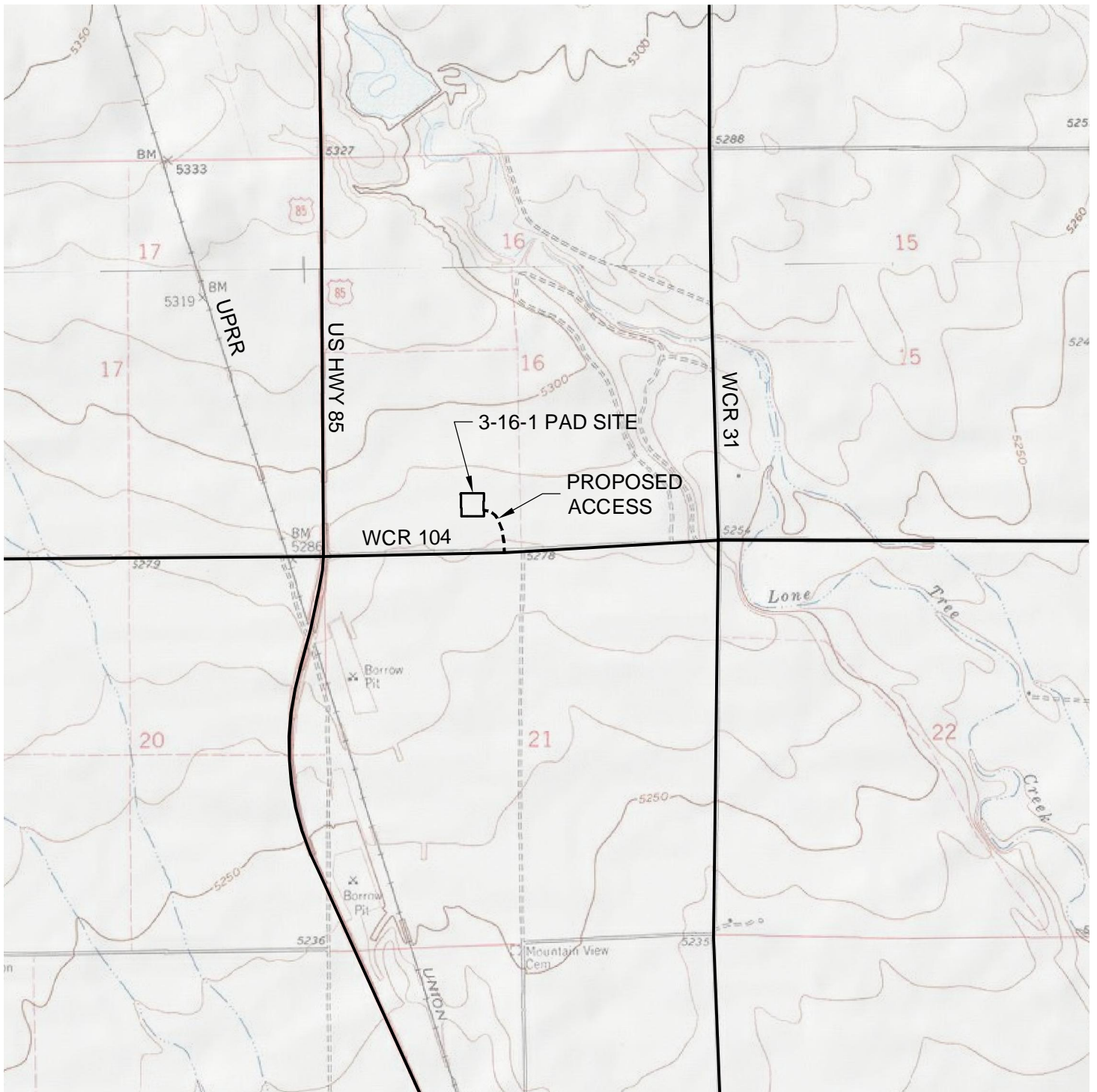
LAND SURVEYING AND MAPPING  
LAFAYETTE - WINTER PARK  
Ph 303 666 0379 Fx 303 665 6320

**RUBICON OIL & GAS LLC**  
PAWNEE 3-16-1

SL SE1/4 SW1/4 SEC. 16 T9N R66W  
BL NW1/4 NW1/4 SEC. 16 T9N R66W  
6th PM WELD COUNTY COLORADO

# ACCESS ROAD MAP

PAWNEE 3-16-1 PAD



North

0 2000 4000

Graphic Scale in Feet  
1 inch = 2000 feet



LAND SURVEYING AND MAPPING  
LAFAYETTE - WINTER PARK  
Ph 303 666 0379 Fx 303 665 6320

RUBICON OIL & GAS LLC  
PAWNEE 3-16-1

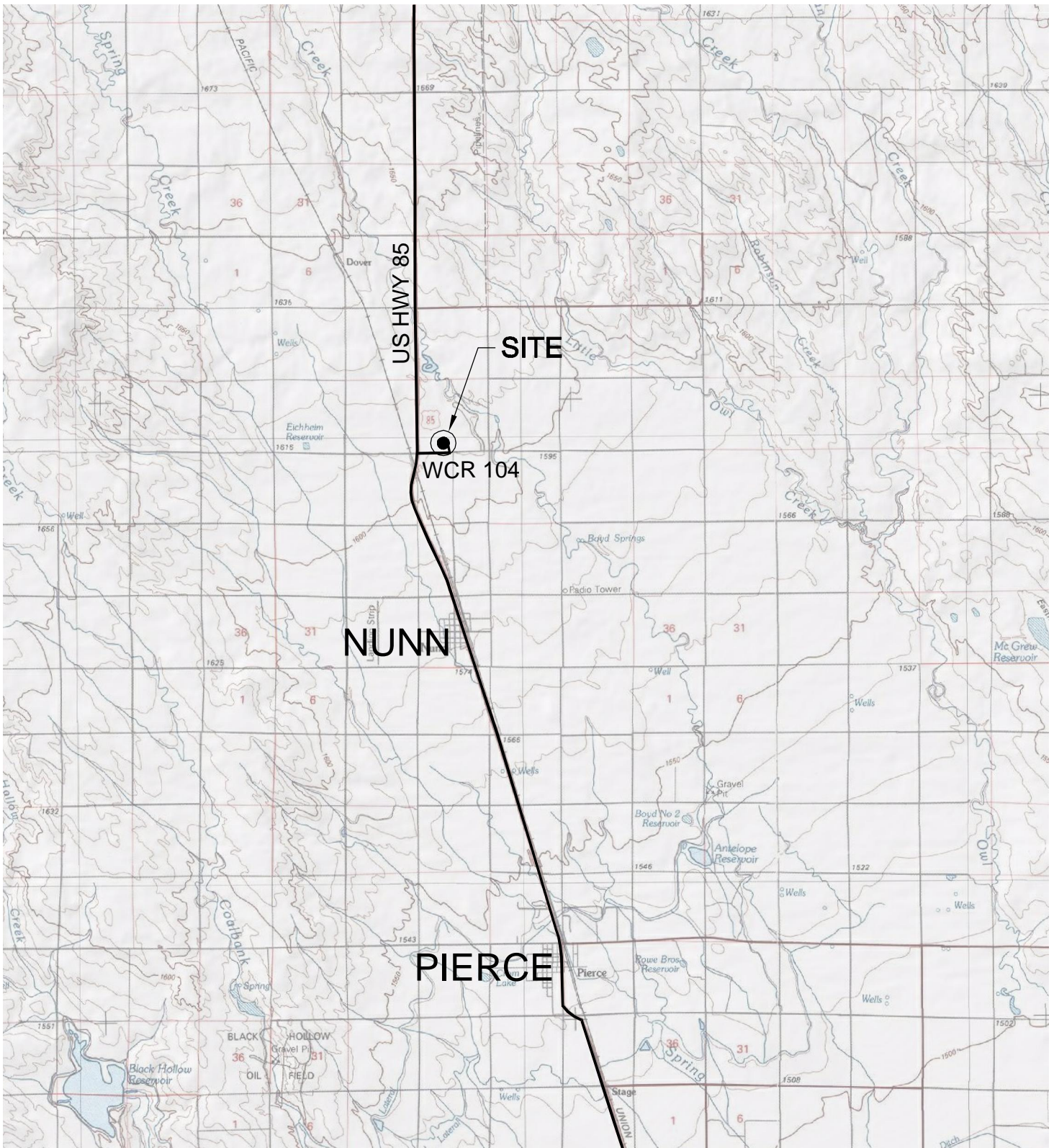
SL SE1/4 SW1/4 SEC. 16 T9N R66W  
BL NW1/4 NW1/4 SEC. 16 T9N R66W  
6th PM WELD COUNTY COLORADO

3/25/10



# VICINITY MAP

PAWNEE 3-16-1 PAD



1" = 2 MILES  
GRID



**LAND SURVEYING AND MAPPING**  
**LAFAYETTE - WINTER PARK**  
 Ph 303 666 0379 Fx 303 665 6320

**RUBICON OIL & GAS LLC**  
**PAWNEE 3-16-1**

**SL SE1/4 SW1/4 SEC. 16 T9N R66W**  
**BL NW1/4 NW1/4 SEC. 16 T9N R66W**  
**6th PM WELD COUNTY COLORADO**

3/25/10