

Hydrology Map

Guttersen 24S
NESE Section 24, T3N, R64W
Weld County, Colorado

OIL AND GAS WELLS

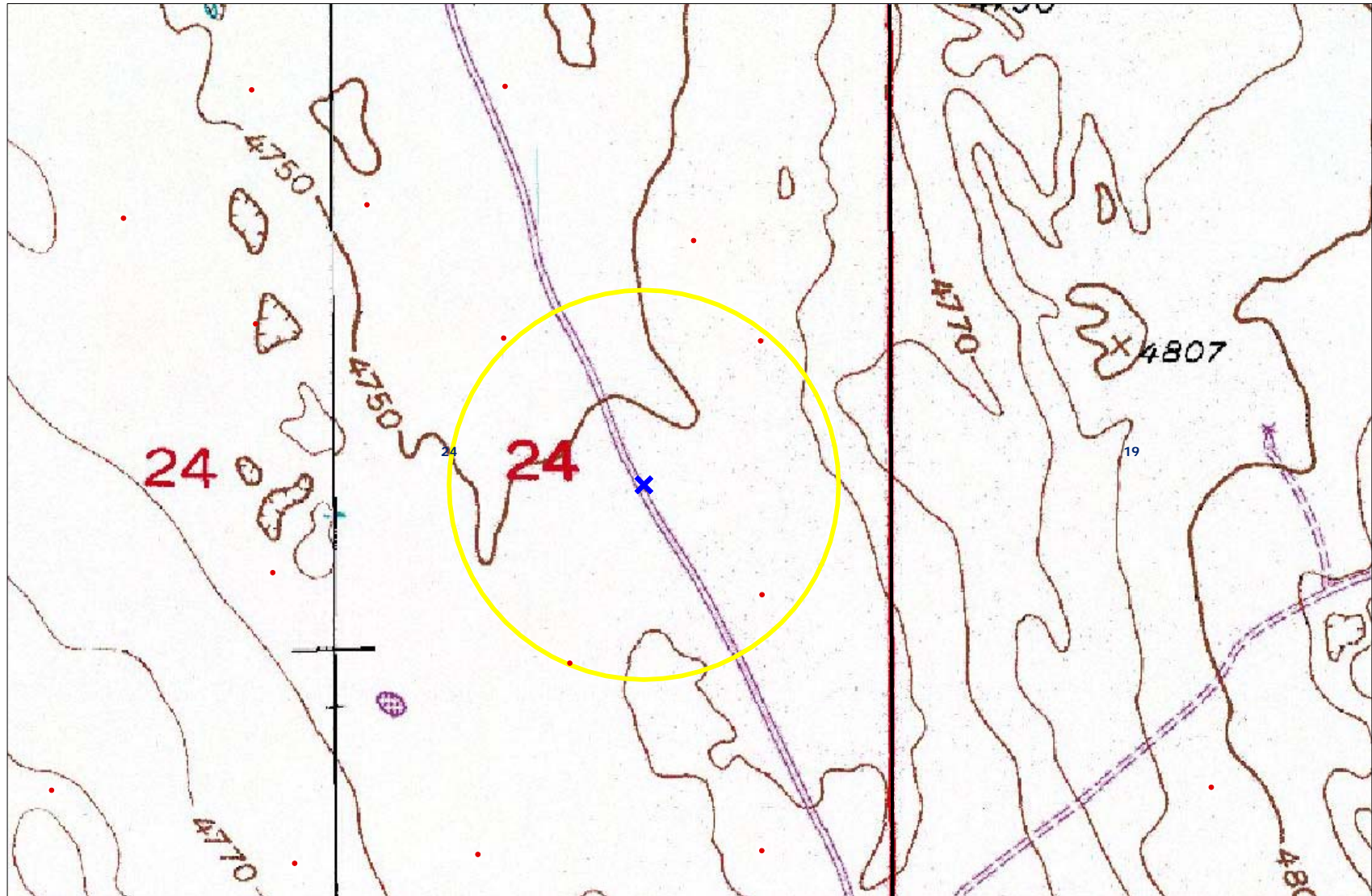
- Oil and Gas Wells
- ✕ Temporary Point
- ✕ Buffer layer

ROADS AND RRS

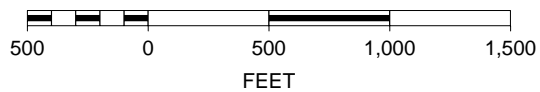
- Major Highways
- Major Roads
- Local Roads

TOPOS (1: 24K)

- NE Colorado Topo



SCALE 1 : 9,550



There are no hydrology features within the 1,000' radius.

