

PROPOSED WELL LOCATION EXHIBIT

SECTION 32, TOWNSHIP 6 NORTH, RANGE 65 WEST OF THE 6TH P.M.,

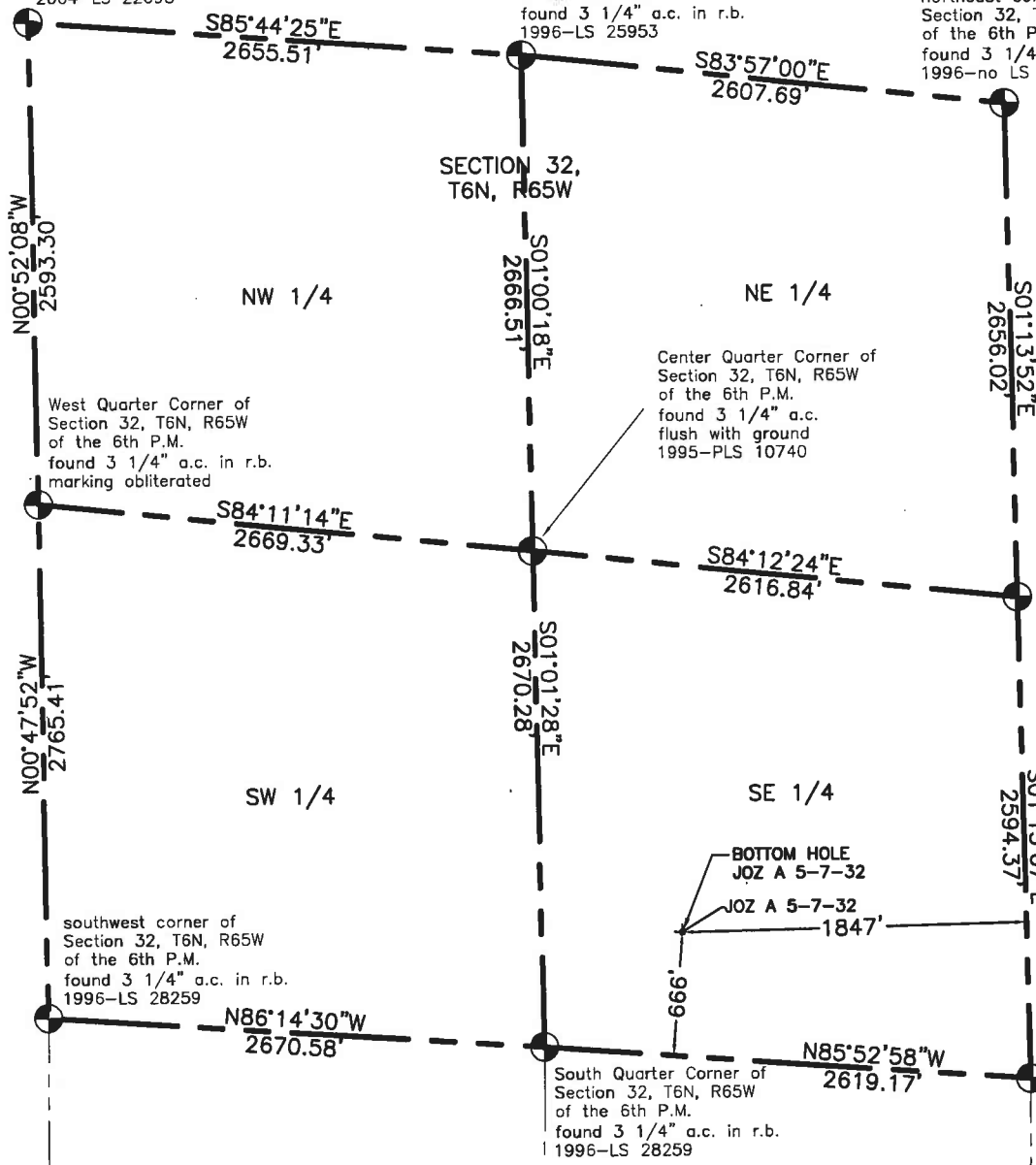
WELD COUNTY, COLORADO

northwest corner of
Section 32, T6N, R65W
of the 6th P.M.
found 3 1/4" a.c. in r.b.
2004-LS 22098

North Quarter Corner of
Section 32, T6N, R65W
of the 6th P.M.
found 3 1/4" a.c. in r.b.
1996-LS 25953

northeast corner of
Section 32, T6N, R65W
of the 6th P.M.
found 3 1/4" a.c. in r.b.
1996-no LS number

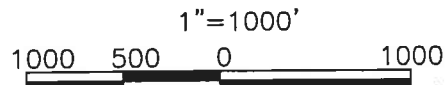
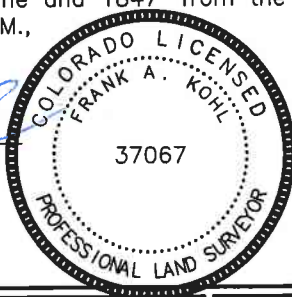
SURFACE USE-RAW LAND
LATITUDE=40.43837°N
LONGITUDE=104.68434°W
ELEVATION=4641'
PDOP=1.9



LAND SURVEYOR'S CERTIFICATION

Lamp, Rynearson & Associates, Inc., of Greeley, Colorado has in accordance with a request from Collin Richardson for Mineral Resources, Inc., determined the surface location of the well designated as JOZ A 5-7-32 to be 666' from the south line and 1847' from the east line of Section 32, Township 6 North, Range 65 West of the 6th P.M., Weld County, Colorado.

Frank A. Kohl
Colorado PLS 37067



LEGEND
ac = aluminum cap
r.b. = range box



LAMP RYNEARSON
& ASSOCIATES

4715 Innovation Drive
Fort Collins, CO 80525
www.LRA-Inc.com
970.226.0342 | P
970.226.0879 | F

drawn by: DJB
designer: FAK
job number-tasks: 0209021.00
date: 12-23-09
scale: 1"=1000'
well name: JOZ A 5-7-32