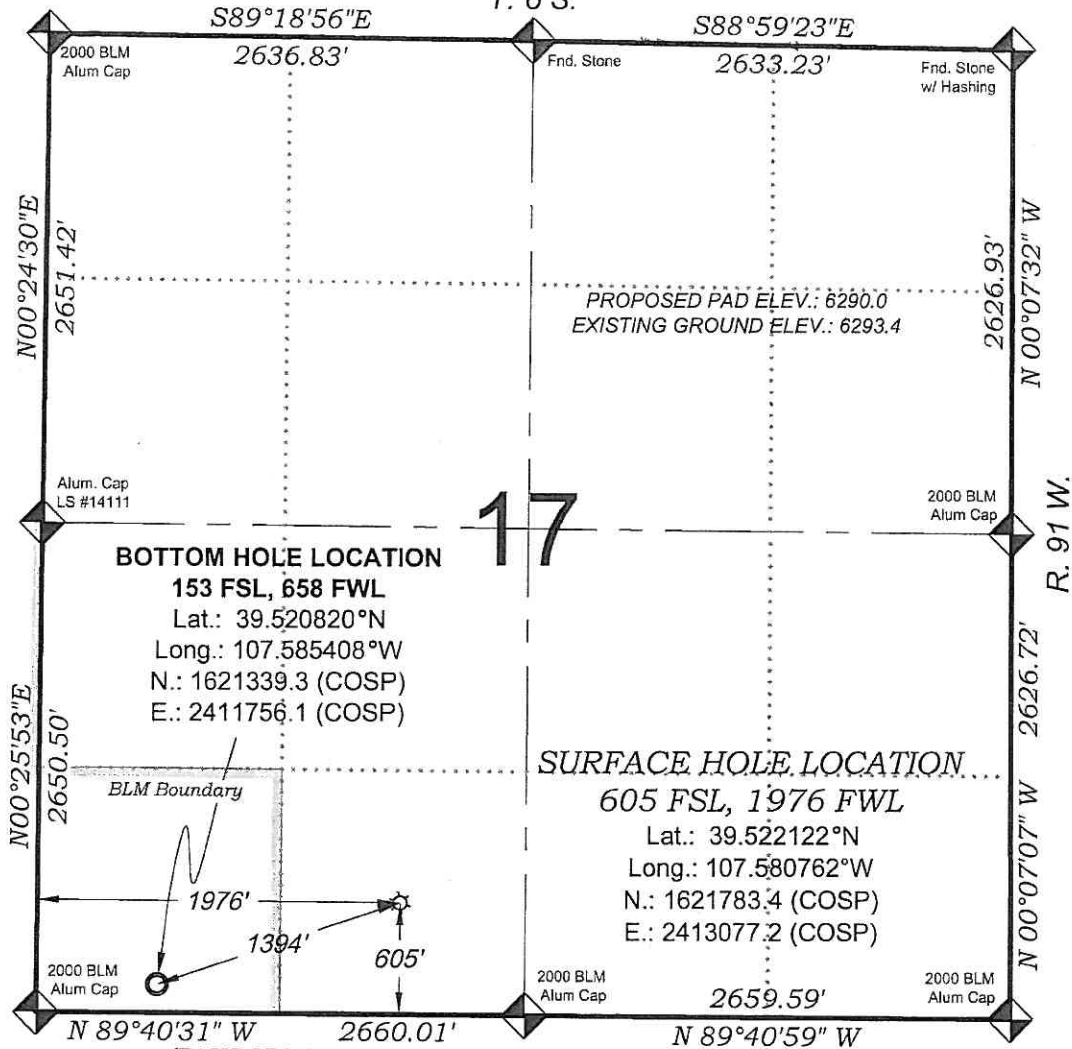
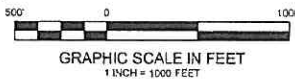


Jolley KP 514-17

T. 6 S.



THERE ARE NO VISIBLE IMPROVEMENTS WITHIN 400' OF THIS LOCATION (BASIS OF BEARING)



- LEGEND -

FIELD LOCATED SECTION MONUMENTS AS DESCRIBED

FIELD SURVEYED WELL LOCATION

CALCULATED BOTTOM HOLE LOCATION

CALCULATED SECTION CORNER LOCATION

SURVEYORS STATEMENT

I, MICHAEL J. LANGHORNE, A REGISTERED LAND SURVEYOR IN THE STATE OF COLORADO DO HEREBY CERTIFY THAT THE SURVEY SHOWN HEREON WAS PREPARED UNDER MY DIRECT SUPERVISION AND HAS BEEN STAKED ON THE GROUND AS SHOWN ON THE PLAT AND CHECKING THAT THIS MAP IS A TRUE REPRESENTATION THEREOF.

Michael J. Langhorne

MICHAEL J. LANGHORNE, COLORADO REGISTRATION NO. 36572
FOR AND ON BEHALF OF
BOOKCLIFF SURVEY SERVICES, INC.

REFERENCES

- 1) 2000 DEPENDENT RE-SURVEY T. 6 S., R. 91 W., 6th P.M (GLO NOTES)
- 2) U.S.G.S. QUAD: NEW CASTLE, CO

NOTES

- 1) ELEVATIONS BASED ON N.A.V.D. 1988 PUBLISHED COORDINATES.
- 2) LATITUDES AND LONGITUDES ARE BASE ON NAD 83, PUBLISHED COORDINATES
- 3) STATE PLANE COORDINATES ARE BASED ON COLORADO CENTRAL ZONE, U.S. SURVEY FEET.
- 4) ELEVATION MASK SET TO 15"
- 5) GPS OPERATOR J. KIRKPATRICK, OBSERVED A PDOP OF 1.97 FOR SURVEY POINT NUMBER 55193.
- 6) SURFACE AND BOTTOM HOLE LOCATIONS ARE MEASURED 90° FROM SECTION LINES.

WELL LOCATION PLAT Prepared for:

Williams. Williams Production, RMT

SE1/4 SW1/4, SECTION 17
T. 6 S., R. 91 W. of the 6th. P.M.
GARFIELD COUNTY, COLORADO

136 East Third Street
Pueblo, Colorado 81050
Ph: (770) 625-1300
Fax: (770) 625-2773



BOOKCLIFF
Survey Services, Inc.

SURVEY DATE: 1/15/10
MAP DATE: 3/24/10
SCALE: 1" = 1000'
PLAT: 1 of 1
PROJECT: Williams KP