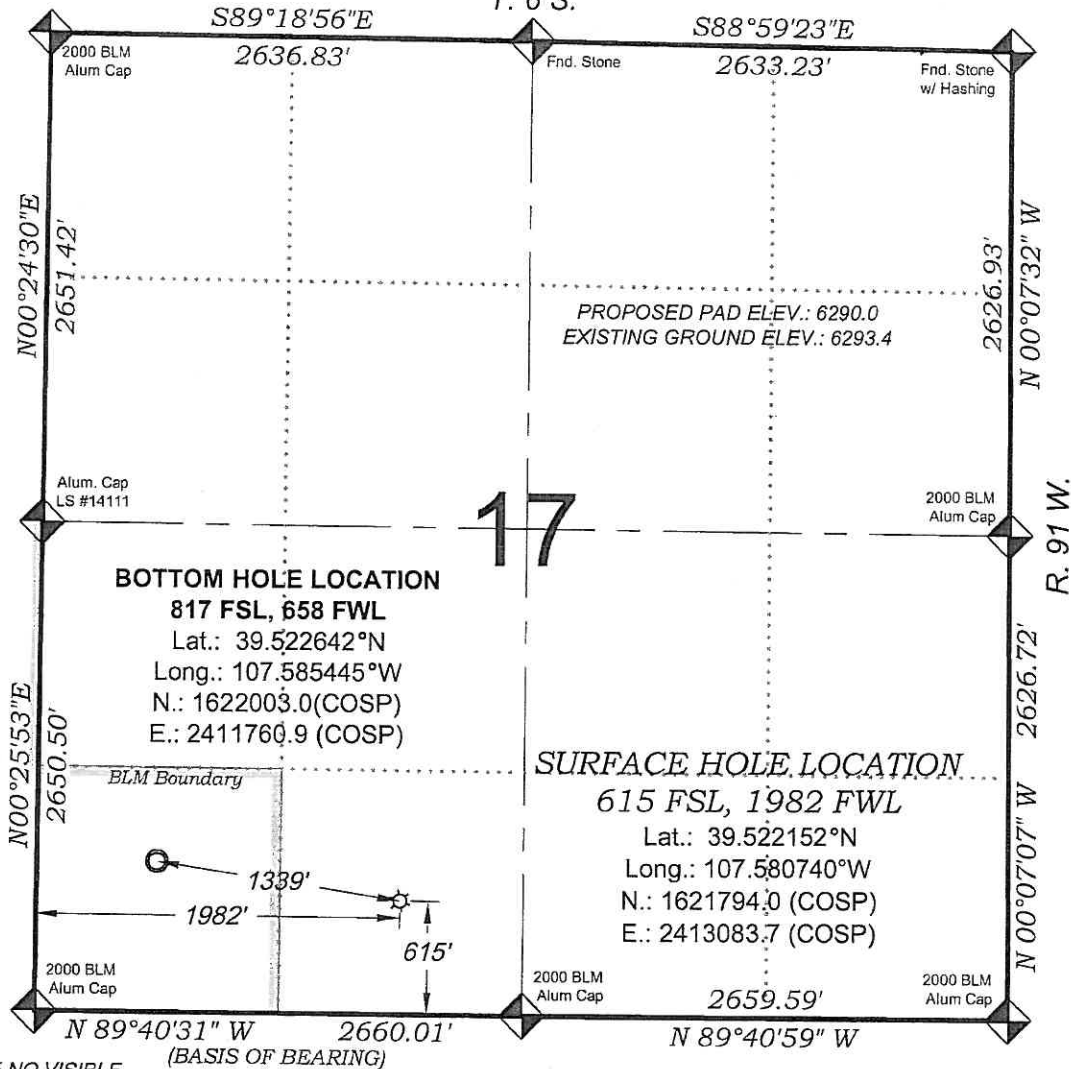


Jolley KP 314-17

T. 6 S.



17

BOTTOM HOLE LOCATION

817 FSL, 658 FWL

Lat.: 39.522642°N

Long.: 107.585445°W

N.: 1622003.0(COSP)

E.: 2411760.9 (COSP)

SURFACE HOLE LOCATION

615 FSL, 1982 FWL

Lat.: 39.522152°N

Long.: 107.580740°W

N.: 1621794.0 (COSP)

E.: 2413083.7 (COSP)

BLM Boundary



1339'

1982'

615'

THERE ARE NO VISIBLE
IMPROVEMENTS WITHIN 400'
OF THIS LOCATION



SURVEYORS STATEMENT

I, MICHAEL J. LANGHORNE, A REGISTERED LAND SURVEYOR IN THE STATE OF COLORADO DO HEREBY CERTIFY THAT THE SURVEY SHOWN HEREON WAS PREPARED UNDER MY DIRECT SUPERVISION AND HAS BEEN STAKED ON THE GROUND AS SHOWN ON THE PLAT AND CHECKING THAT THIS MAP IS A TRUE REPRESENTATION THEREOF.

Michael J. Langhorne

MICHAEL J. LANGHORNE, COLORADO REGISTRATION NO. 36572
FOR AND ON BEHALF OF
BOOKCLIFF SURVEY SERVICES, INC.

REFERENCES

- 1) 2000 DEPENDENT RE-SURVEY T. 6 S., R. 91 W., 6th P.M. (GLO NOTES)
- 2) U.S.G.S. QUAD: NEW CASTLE, CO

136 East Third Street
Bryle, Colorado 81650
Ph. (970) 625-1330
Fax (970) 625-2773



BOOKCLIFF
Survey Services, Inc.

SURVEY DATE: 1/15/10
MAP DATE: 3/24/10
SCALE: 1" = 1000'
PLAT: 1 of 1
PROJECT: Williams KP

- LEGEND -

FIELD LOCATED SECTION
MONUMENTS AS DESCRIBED



FIELD SURVEYED
WELL LOCATION



CALCULATED BOTTOM
HOLE LOCATION



CALCULATED SECTION
CORNER LOCATION



NOTES

- 1) ELEVATIONS BASED ON N.A.V.D. 1988 PUBLISHED COORDINATES.
- 2) LATITUDES AND LONGITUDES ARE BASE ON NAD 83, PUBLISHED COORDINATES
- 3) STATE PLANE COORDINATES ARE BASED ON COLORADO CENTRAL ZONE, U.S. SURVEY FEET.
- 4) ELEVATION MASK SET TO 15"
- 5) GPS OPERATOR J. KIRKPATRICK, OBSERVED A PDOP OF 1.97 FOR SURVEY POINT NUMBER 55193.
- 6) SURFACE AND BOTTOM HOLE LOCATIONS ARE MEASURED 90° FROM SECTION LINES.

WELL LOCATION PLAT Prepared for:

Williams Williams Production, RMT

SE1/4 SW1/4, SECTION 17
T. 6 S., R. 91 W. of the 6th. P.M.
GARFIELD COUNTY, COLORADO