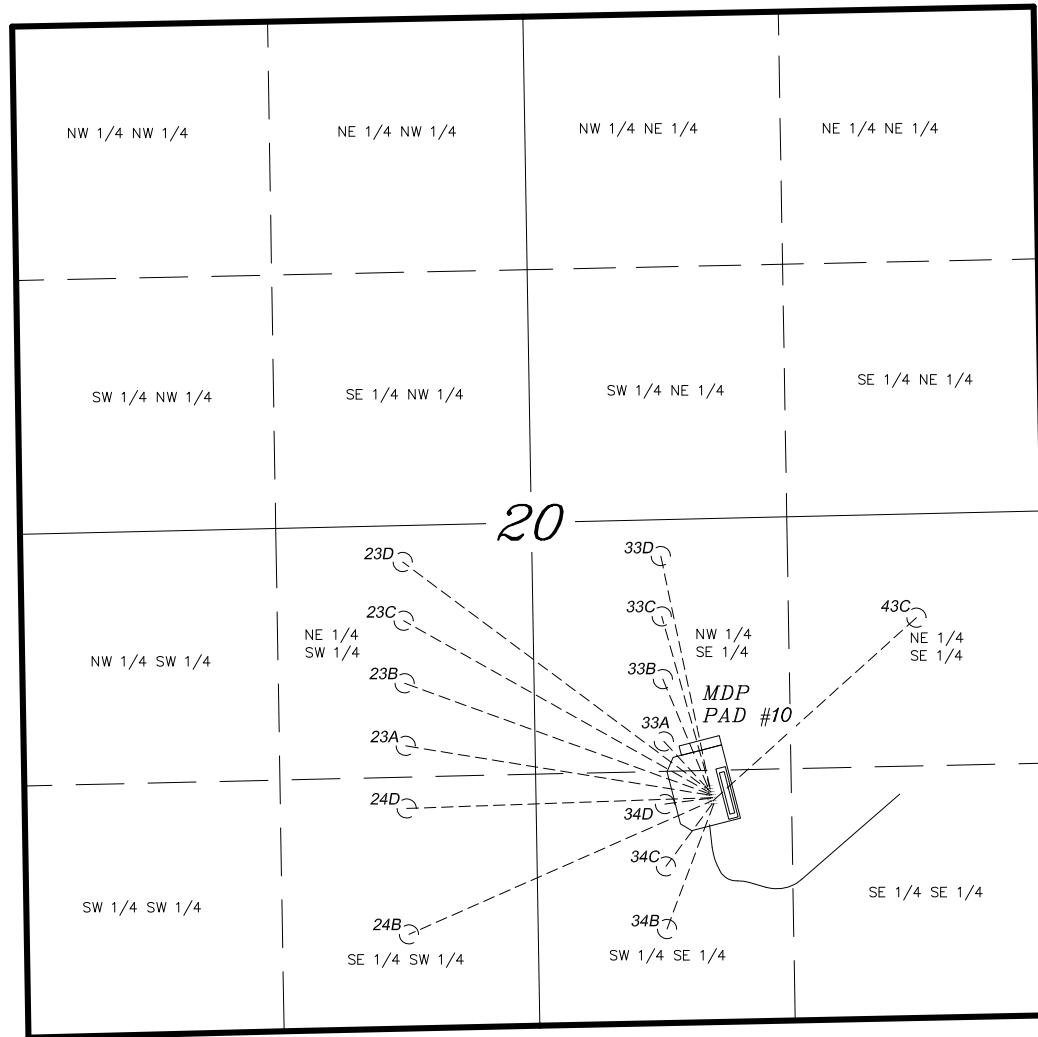


T6S, R91W, 6th P.M.

BILL BARRETT CORP.

**GENERAL MUTLI WELL PLAN
SECTION DRILLING MAP
WELL PAD (MDP PAD #10)**



LATITUDE & LONGITUDE Surface position of Wells (NAD 83)		
WELL	LATITUDE	LONGITUDE
34B-20	39° 30' 33.27"	107° 34' 29.34"
43C-20	39° 30' 33.42"	107° 34' 29.39"
24D-20	39° 30' 33.57"	107° 34' 29.44"
23B-20	39° 30' 33.73"	107° 34' 29.49"
23D-20	39° 30' 33.88"	107° 34' 29.54"
33D-20	39° 30' 34.03"	107° 34' 29.59"
33C-20	39° 30' 34.18"	107° 34' 29.64"
34C-20	39° 30' 33.24"	107° 34' 29.46"
24B-20	39° 30' 33.39"	107° 34' 29.51"
34D-20	39° 30' 33.55"	107° 34' 29.56"
23A-20	39° 30' 33.70"	107° 34' 29.61"
23C-20	39° 30' 33.85"	107° 34' 29.66"
33A-20	39° 30' 34.01"	107° 34' 29.71"
33B-20	39° 30' 34.16"	107° 34' 29.76"

LATITUDE & LONGITUDE Bottom hole position of Wells (NAD 83)		
WELL	LATITUDE	LONGITUDE
34B-20	39° 30' 26.82"	107° 34' 32.47"
43C-20	39° 30' 42.81"	107° 34' 15.85"
24D-20	39° 30' 33.05"	107° 34' 49.74"
23B-20	39° 30' 39.49"	107° 34' 49.87"
23D-20	39° 30' 45.74"	107° 34' 49.97"
33D-20	39° 30' 46.01"	107° 34' 32.83"
33C-20	39° 30' 42.90"	107° 34' 32.77"
34C-20	39° 30' 30.04"	107° 34' 32.53"
24B-20	39° 30' 26.57"	107° 34' 49.62"
34D-20	39° 30' 33.25"	107° 34' 32.59"
23A-20	39° 30' 36.27"	107° 34' 49.80"
23C-20	39° 30' 42.71"	107° 34' 49.92"
33A-20	39° 30' 36.47"	107° 34' 32.65"
33B-20	39° 30' 39.68"	107° 34' 32.71"

TRI STATE LAND SURVEYING & CONSULTING

180 NORTH VERNAL AVE. — VERNAL, UTAH 84078
(435) 781-2501

DATE SURVEYED: 12-21-09	SURVEYED BY: C.D.S.	SHEET 1 OF 12
DATE DRAWN: 12-28-09	DRAWN BY: F.T.M.	
REVISED: 01-14-10 F.T.M.	SCALE: 1" = 1000'	