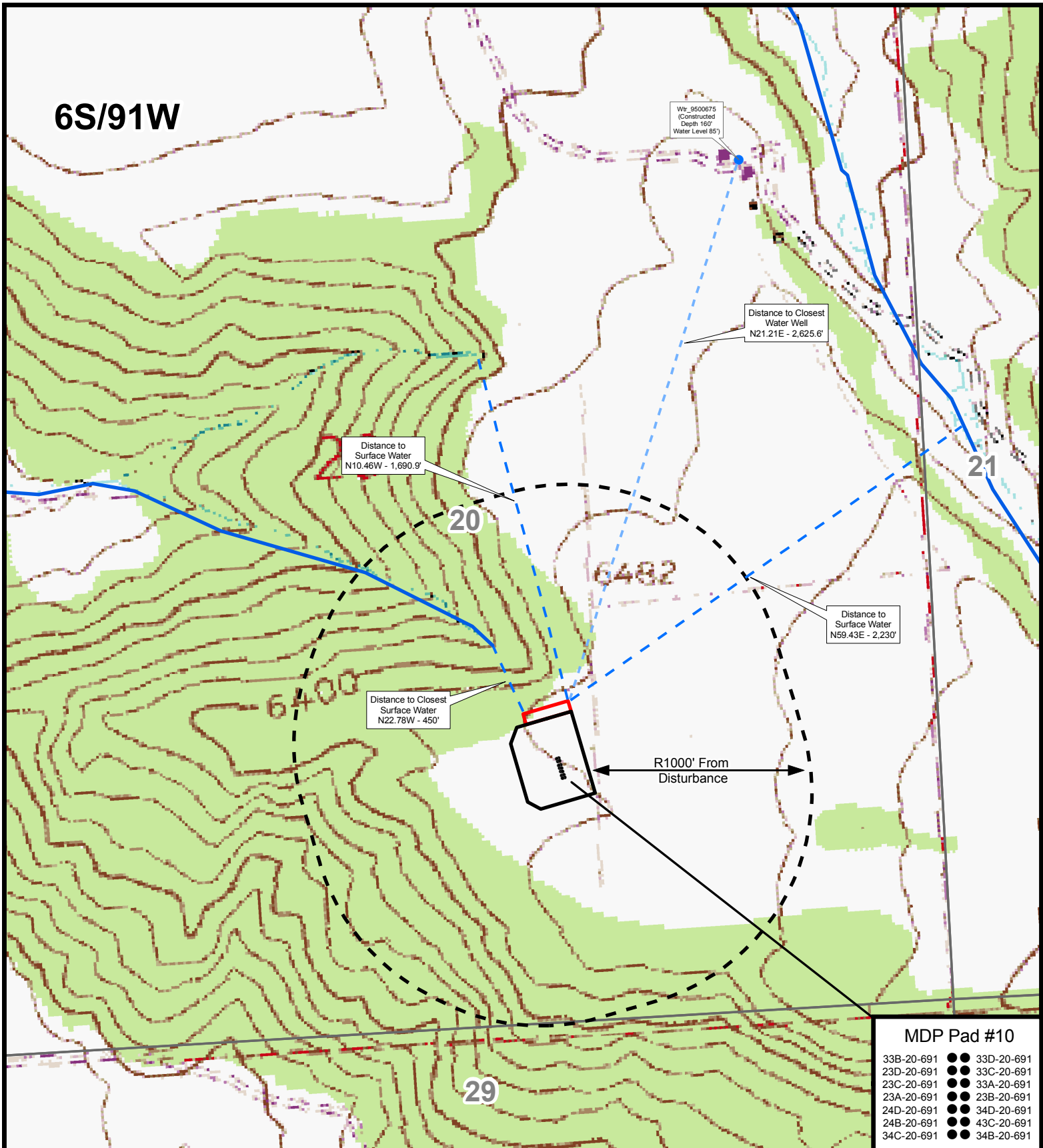


6S/91W



MDP Pad #10

33B-20-691	●	33D-20-691	●
23D-20-691	●	33C-20-691	●
23C-20-691	●	33A-20-691	●
23A-20-691	●	23B-20-691	●
24D-20-691	●	34D-20-691	●
24B-20-691	●	43C-20-691	●
34C-20-691	●	34B-20-691	●

Hydrology Map

MDP Pad 10
W2SE, Section 20, T6S R91W
Garfield County, Colorado

0 125 250 500
Feet



Wells

- Water Wells
- Proposed O&G SH Location

Legend

- ▭ Pad Disturbance
- ▭ Production Facility



- 1000' Buffer
- Stream / River
- Canal / Ditch