



01693271

Map Unit Description

Lincoln County, Colorado

109 Ascalon-Haxtun complex, 0 to 3 percent slopes

Setting

Elevation: 4400 to 6000 feet
Mean annual precipitation: 14 to 16 inches
Mean annual air temperature: 46 to 52 degrees F
Frost-free period: 135 to 155 days

Composition

Ascalon and similar soils: 55 percent
Haxtun and similar soils: 30 percent
Minor components: 15 percent

Description of Ascalon

Setting

Landform: Plains
Down-slope shape: Linear
Across-slope shape: Linear
Parent material: Eolian deposits

Properties and Qualities

Slope: 0 to 3 percent
Drainage class: Well drained
Capacity of the most limiting layer to transmit water (Ksat): Moderately high or high (0.60 to 2.00 in/hr)
Frequency of flooding: None
Frequency of ponding: None
Calcium carbonate maximum: 15 percent
Gypsum maximum: 0 percent
Available water capacity: Moderate (about 8.9 inches)

Interpretive Groups

Land capability (non irrigated): 3c
Ecological site: Sandy Plains (R067BY024CO)

Typical Profile

0 to 4 inches: sandy loam
4 to 15 inches: sandy clay loam
15 to 60 inches: fine sandy loam

Description of Haxtun

Setting

Landform: Drainageways
Down-slope shape: Linear
Across-slope shape: Linear
Parent material: Alluvium and/or eolian deposits

Properties and Qualities

Slope: 0 to 3 percent
Drainage class: Well drained
Capacity of the most limiting layer to transmit water (Ksat): Moderately high (0.20 to 0.60 in/hr)
Frequency of flooding: None
Frequency of ponding: None
Calcium carbonate maximum: 15 percent
Gypsum maximum: 2 percent
Available water capacity: Moderate (about 8.9 inches)

Interpretive Groups

Land capability (non irrigated): 3e
Ecological site: Sandy Plains (R067BY024CO)

Typical Profile

0 to 4 inches: loamy sand
4 to 17 inches: sandy loam
17 to 44 inches: sandy clay loam
44 to 60 inches: silt loam

Map Unit Description

Lincoln County, Colorado

Minor Components

Pleasant soils

Percent of map unit: 3 percent

Landform: Depressions

Ecological site: Plains Swale (R067XY010CO)

Platner soils

Percent of map unit: 3 percent

Landform: Plains

Ecological site: Loamy Plains (R067BY002CO)

Other vegetative classification: LOAMY PLAINS (067XY002CO_1)

Vona soils

Percent of map unit: 3 percent

Landform: Hills

Other vegetative classification: SANDY PLAINS (067XY024CO_1)

Oldest soils

Percent of map unit: 3 percent

Landform: Plains

Other vegetative classification: SANDY PLAINS (067XY024CO_1)

Otero soils

Percent of map unit: 3 percent

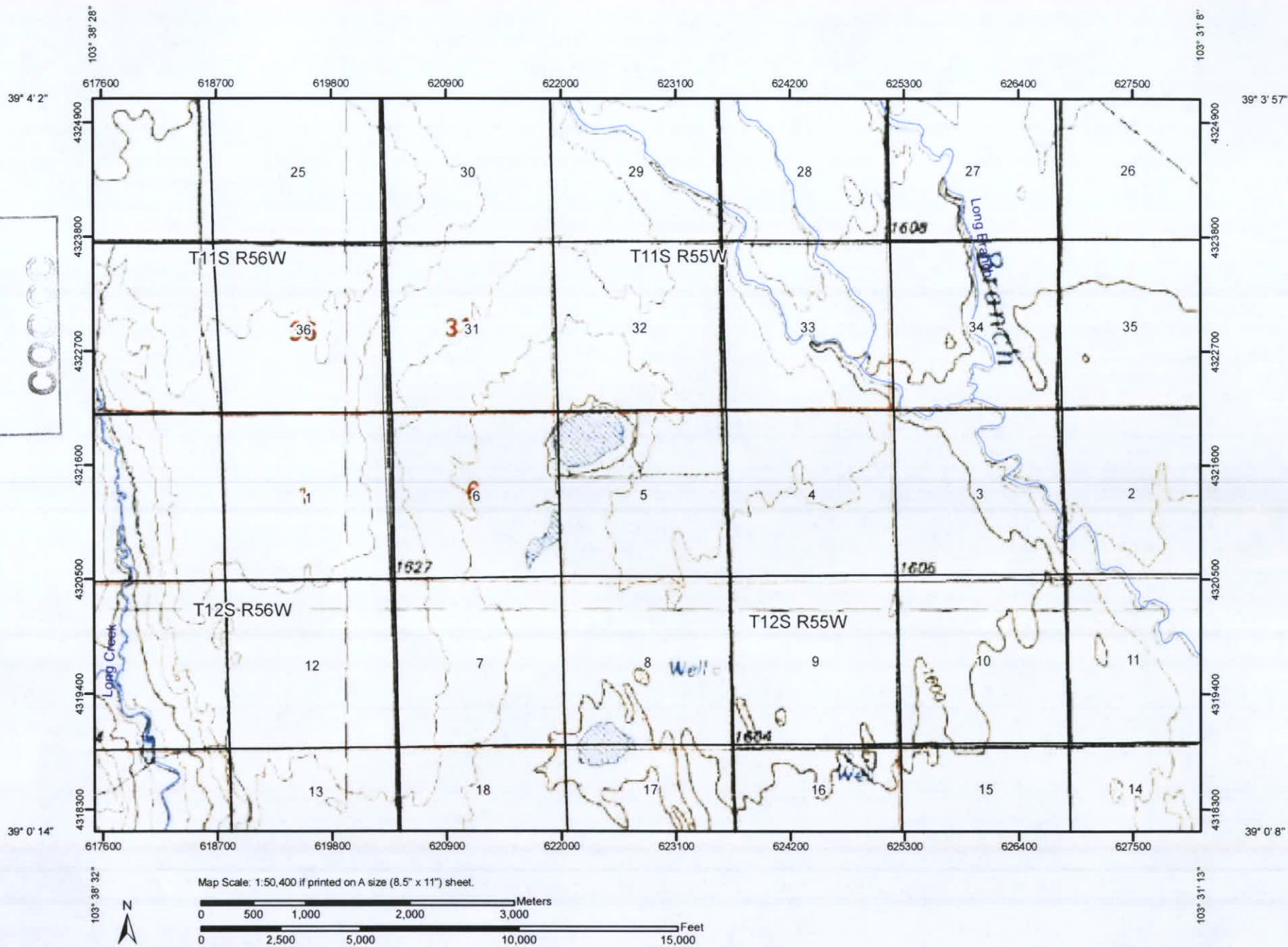
Landform: Hills

Other vegetative classification: SANDY PLAINS (067XY024CO_1)

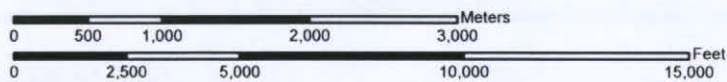
Soil Map—Lincoln County, Colorado

RECEIVED
FEB 24 2010
COCO

NRCS MAP

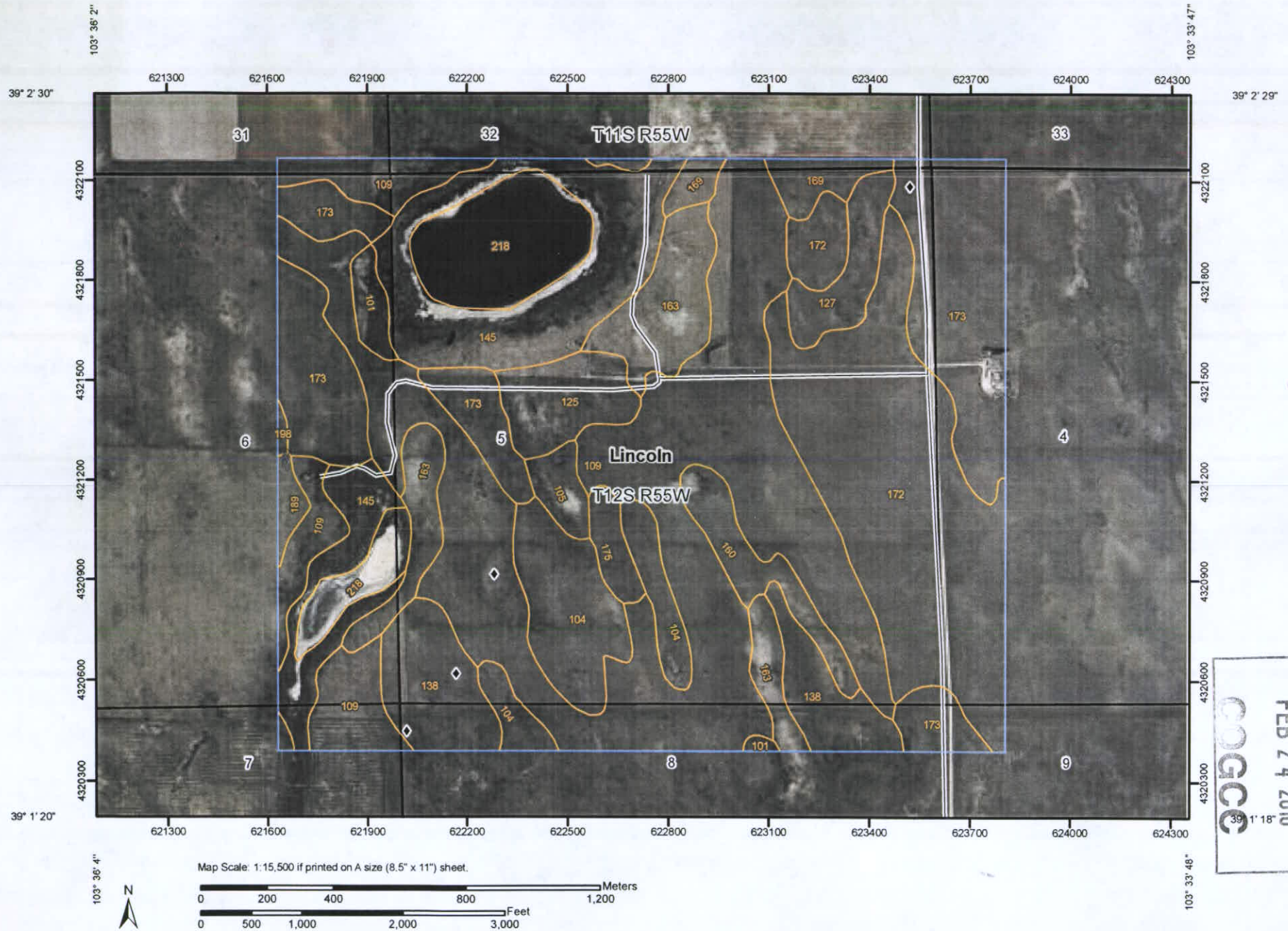


Map Scale: 1:50,400 if printed on A size (8.5" x 11") sheet.



02585703

Soil Map—Lincoln County, Colorado



NRCs
0585706

RECEIVED
FEB 24 2010
COGCC
39° 1' 18"

RECEIVED

FEB 24 2010

COGCC

Lincoln County, Colorado

109—Ascalon-Haxtun complex, 0 to 3 percent slopes

Map Unit Setting

Elevation: 4,400 to 6,000 feet
Mean annual precipitation: 14 to 16 inches
Mean annual air temperature: 46 to 52 degrees F
Frost-free period: 135 to 155 days

Map Unit Composition

Ascalon and similar soils: 55 percent
Haxtun and similar soils: 30 percent
Minor components: 15 percent

Description of Ascalon

Setting

Landform: Plains
Down-slope shape: Linear
Across-slope shape: Linear
Parent material: Eolian deposits

Properties and qualities

Slope: 0 to 3 percent
Depth to restrictive feature: More than 80 inches
Drainage class: Well drained
Capacity of the most limiting layer to transmit water (Ksat): Moderately high to high (0.60 to 2.00 in/hr)
Depth to water table: More than 80 inches
Frequency of flooding: None
Frequency of ponding: None
Calcium carbonate, maximum content: 15 percent
Maximum salinity: Nonsaline (0.0 to 2.0 mmhos/cm)
Available water capacity: Moderate (about 8.9 inches)

Interpretive groups

Land capability (nonirrigated): 3c
Ecological site: Sandy Plains (R067BY024CO)

Typical profile

0 to 4 inches: Sandy loam
4 to 15 inches: Sandy clay loam
15 to 60 inches: Fine sandy loam

Description of Haxtun

Setting

Landform: Drainageways
Down-slope shape: Linear
Across-slope shape: Linear
Parent material: Alluvium and/or eolian deposits

Map Unit Description: Ascalon-Haxtun complex, 0 to 3 percent slopes—Lincoln County, Colorado

Properties and qualities

Slope: 0 to 3 percent
Depth to restrictive feature: More than 80 inches
Drainage class: Well drained
Capacity of the most limiting layer to transmit water (Ksat): Moderately high (0.20 to 0.60 in/hr)
Depth to water table: More than 80 inches
Frequency of flooding: None
Frequency of ponding: None
Calcium carbonate, maximum content: 15 percent
Gypsum, maximum content: 2 percent
Maximum salinity: Nonsaline (0.0 to 2.0 mmhos/cm)
Available water capacity: Moderate (about 8.9 inches)

Interpretive groups

Land capability (nonirrigated): 3e
Ecological site: Sandy Plains (R067BY024CO)

Typical profile

0 to 4 inches: Loamy sand
4 to 17 inches: Sandy loam
17 to 44 inches: Sandy clay loam
44 to 60 inches: Silt loam

Minor Components**Pleasant**

Percent of map unit: 3 percent
Landform: Depressions
Ecological site: Plains Swale (R067XY010CO)

Platner

Percent of map unit: 3 percent
Landform: Plains
Ecological site: Loamy Plains (R067BY002CO)
Other vegetative classification: LOAMY PLAINS (067XY002CO_1)

Vona

Percent of map unit: 3 percent
Landform: Hills
Landform position (three-dimensional): Side slope
Other vegetative classification: SANDY PLAINS (067XY024CO_1)

Olnest

Percent of map unit: 3 percent
Landform: Plains
Other vegetative classification: SANDY PLAINS (067XY024CO_1)

Otero

Percent of map unit: 3 percent
Landform: Hills
Landform position (three-dimensional): Side slope

RECEIVED

FEB 24 2010

COGCC

Map Unit Description: Ascalon sandy loam, 3 to 5 percent slopes—Lincoln County, Colorado

Lincoln County, Colorado

104—Ascalon sandy loam, 3 to 5 percent slopes

Map Unit Setting

Elevation: 4,400 to 6,000 feet
Mean annual precipitation: 14 to 16 inches
Mean annual air temperature: 46 to 52 degrees F
Frost-free period: 135 to 155 days

Map Unit Composition

Ascalon and similar soils: 85 percent
Minor components: 15 percent

Description of Ascalon

Setting

Landform: Hills
Landform position (three-dimensional): Side slope
Down-slope shape: Linear
Across-slope shape: Linear
Parent material: Eolian deposits

Properties and qualities

Slope: 3 to 5 percent
Depth to restrictive feature: More than 80 inches
Drainage class: Well drained
Capacity of the most limiting layer to transmit water (Ksat): Moderately high to high (0.60 to 2.00 in/hr)
Depth to water table: More than 80 inches
Frequency of flooding: None
Frequency of ponding: None
Calcium carbonate, maximum content: 15 percent
Maximum salinity: Nonsaline (0.0 to 2.0 mmhos/cm)
Available water capacity: Moderate (about 8.9 inches)

Interpretive groups

Land capability (nonirrigated): 3e
Ecological site: Sandy Plains (R067BY024CO)

Typical profile

0 to 4 inches: Sandy loam
4 to 15 inches: Sandy clay loam
15 to 60 inches: Fine sandy loam

Minor Components

Haxtun

Percent of map unit: 3 percent
Landform: Drainageways
Other vegetative classification: SANDY PLAINS (067XY024CO_1)

Pleasant

Percent of map unit: 3 percent



RECEIVED

FEB 24 2010

COGCC

Map Unit Description: Ascalon sandy loam, 3 to 5 percent slopes—Lincoln County, Colorado

Landform: Depressions

Ecological site: Plains Swale (R067XY010CO)

Platner

Percent of map unit: 3 percent

Landform: Plains

Ecological site: Loamy Plains (R067BY002CO)

Other vegetative classification: LOAMY PLAINS (067XY002CO_1)

Vona

Percent of map unit: 3 percent

Landform: Hills

Landform position (three-dimensional): Side slope

Other vegetative classification: SANDY PLAINS (067XY024CO_1)

Otero

Percent of map unit: 3 percent

Landform: Hills

Landform position (three-dimensional): Side slope

Other vegetative classification: SANDY PLAINS (067XY024CO_1)

Data Source Information

Soil Survey Area: Lincoln County, Colorado

Survey Area Data: Version 7, Apr 30, 2009



RECEIVED

FEB 24 2010

COGCC

Lincoln County, Colorado

138—Haxtun-Olnest loamy sands, 0 to 3 percent slopes

Map Unit Setting

Elevation: 4,400 to 6,000 feet
Mean annual precipitation: 11 to 16 inches
Mean annual air temperature: 46 to 52 degrees F
Frost-free period: 135 to 155 days

Map Unit Composition

Haxtun and similar soils: 55 percent
Olnest and similar soils: 30 percent
Minor components: 15 percent

Description of Haxtun

Setting

Landform: Drainageways
Down-slope shape: Linear
Across-slope shape: Linear
Parent material: Alluvium and/or eolian deposits

Properties and qualities

Slope: 0 to 3 percent
Depth to restrictive feature: More than 80 inches
Drainage class: Well drained
Capacity of the most limiting layer to transmit water
(Ksat): Moderately high (0.20 to 0.60 in/hr)
Depth to water table: More than 80 inches
Frequency of flooding: None
Frequency of ponding: None
Calcium carbonate, maximum content: 15 percent
Gypsum, maximum content: 2 percent
Maximum salinity: Nonsaline (0.0 to 2.0 mmhos/cm)
Available water capacity: Moderate (about 8.9 inches)

Interpretive groups

Land capability (nonirrigated): 3e
Ecological site: Sandy Plains (R067BY024CO)

Typical profile

0 to 4 inches: Loamy sand
4 to 17 inches: Sandy loam
17 to 44 inches: Sandy clay loam
44 to 60 inches: Silt loam

Description of Olnest

Setting

Landform: Plains
Down-slope shape: Linear
Across-slope shape: Linear
Parent material: Eolian deposits

RECEIVED

FEB 24 2010

COGCC

Properties and qualities

Slope: 0 to 3 percent
Depth to restrictive feature: More than 80 inches
Drainage class: Well drained
Capacity of the most limiting layer to transmit water
(Ksat): Moderately high to high (0.60 to 2.00 in/hr)
Depth to water table: More than 80 inches
Frequency of flooding: None
Frequency of ponding: None
Calcium carbonate, maximum content: 15 percent
Available water capacity: Moderate (about 7.8 inches)

Interpretive groups

Land capability (nonirrigated): 3e
Ecological site: Sandy Plains (R067BY024CO)

Typical profile

0 to 8 inches: Loamy sand
8 to 38 inches: Sandy clay loam
38 to 60 inches: Loam

Minor Components

Apishapa

Percent of map unit: 5 percent
Landform: Depressions
Ecological site: Plains Swale (R067XY010CO)

Ascalon

Percent of map unit: 5 percent
Landform: Plains
Other vegetative classification: SANDY PLAINS (067XY024CO_1)

Otero

Percent of map unit: 3 percent
Landform: Hills
Landform position (three-dimensional): Side slope
Other vegetative classification: SANDY PLAINS (067XY024CO_1)

Platner

Percent of map unit: 2 percent
Landform: Plains
Ecological site: Loamy Plains (R067BY002CO)
Other vegetative classification: LOAMY PLAINS (067XY002CO_1)

Data Source Information

Soil Survey Area: Lincoln County, Colorado
Survey Area Data: Version 7, Apr 30, 2009