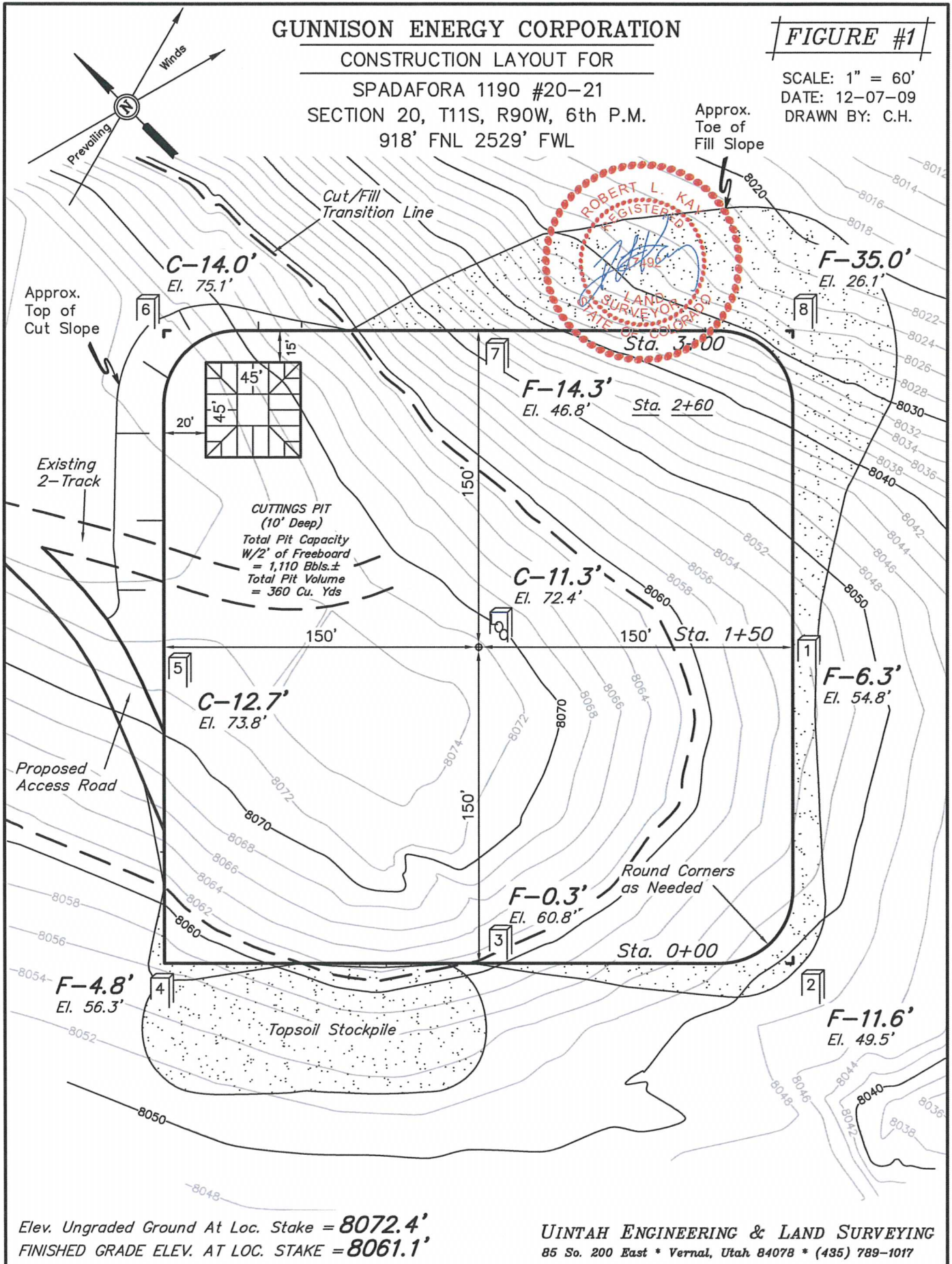


GUNNISON ENERGY CORPORATION
CONSTRUCTION LAYOUT FOR
SPADAFORA 1190 #20-21
SECTION 20, T11S, R90W, 6th P.M.
918' FNL 2529' FWL

FIGURE #1

SCALE: 1" = 60'
 DATE: 12-07-09
 DRAWN BY: C.H.



Elev. Ungraded Ground At Loc. Stake = **8072.4'**
 FINISHED GRADE ELEV. AT LOC. STAKE = **8061.1'**

UINTAH ENGINEERING & LAND SURVEYING
 85 So. 200 East * Vernal, Utah 84078 * (435) 789-1017

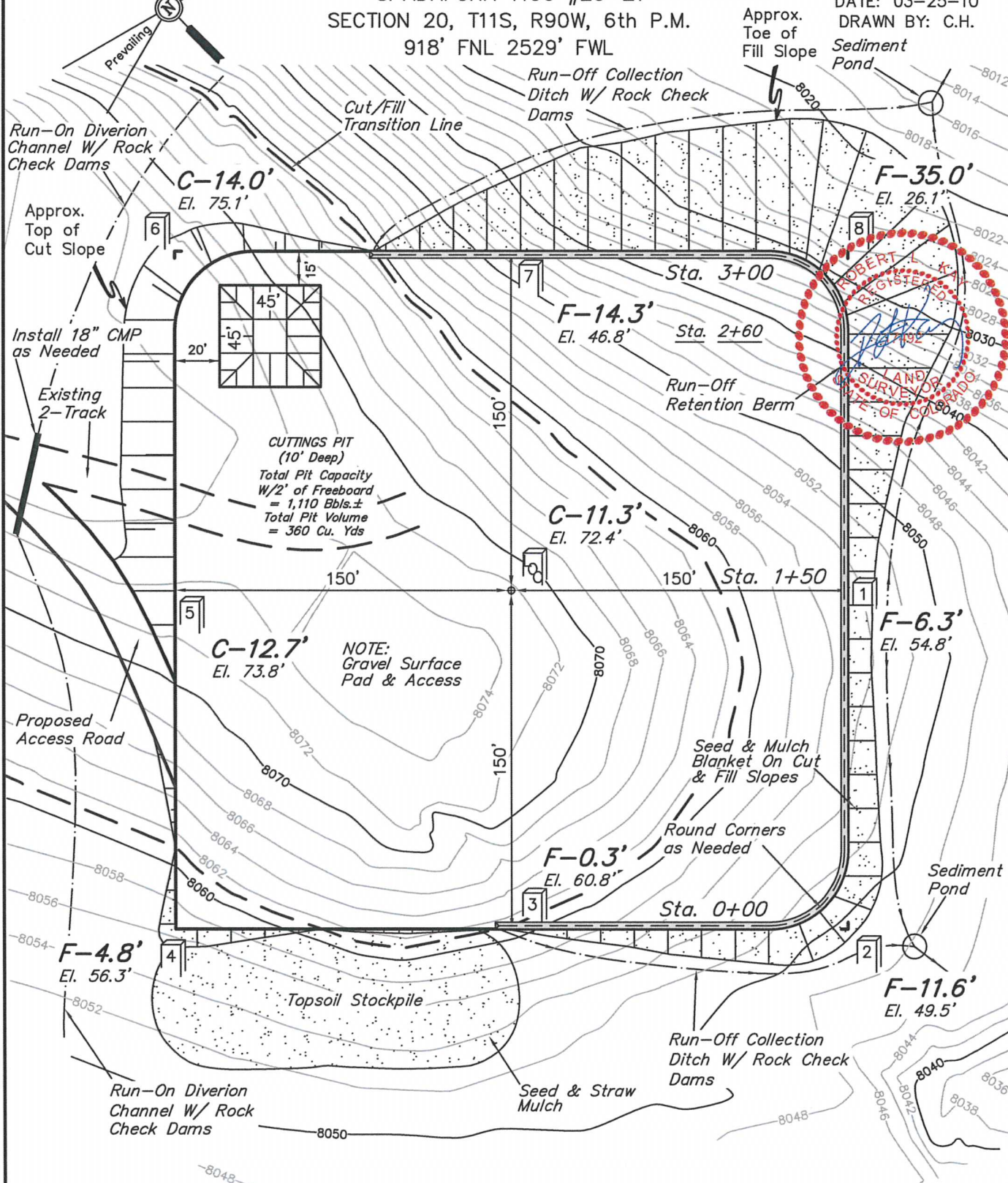
GUNNISON ENERGY CORPORATION

CONSTRUCTION LAYOUT FOR

SPADAFORA 1190 #20-21
SECTION 20, T11S, R90W, 6th P.M.
918' FNL 2529' FWL

FIGURE #1A

SCALE: 1" = 60'
DATE: 03-25-10
DRAWN BY: C.H.



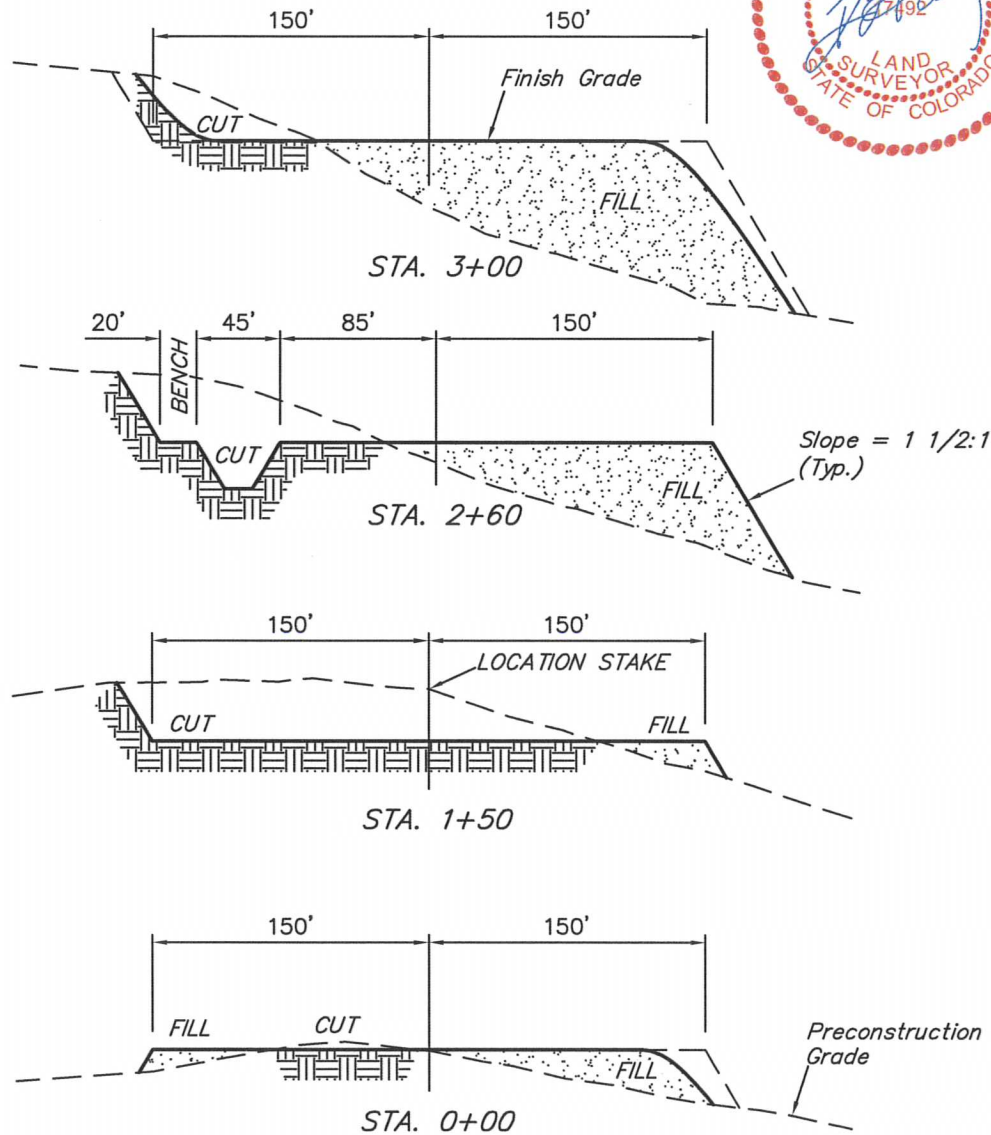
Elev. Ungraded Ground At Loc. Stake = 8072.4'
FINISHED GRADE ELEV. AT LOC. STAKE = 8061.1'

UINTAH ENGINEERING & LAND SURVEYING
85 So. 200 East * Vernal, Utah 84078 * (435) 789-1017

1" = 40'
 X-Section
 Scale
 1" = 100'
 DATE: 12-07-09
 DRAWN BY: C.H.

GUNNISON ENERGY CORPORATION
CONSTRUCTION LAYOUT TYPICAL CROSS SECTION FOR
SPADAFORA 1190 #20-21
SECTION 20, T11S, R90W, 6th P.M.
918' FNL 2529' FWL

FIGURE #2



NOTE:

Topsoil should not be Stripped Below Finished Grade on Substructure Area.

APPROXIMATE ACREAGES
 WELL SITE DISTURBANCE = ± 2.826 ACRES
 ACCESS ROAD DISTURBANCE = ± 0.096 ACRES
 TOTAL = ± 2.922 ACRES

*** NOTE:**
 FILL QUANTITY INCLUDES 5% FOR COMPACTION

APPROXIMATE YARDAGES

(6") Topsoil Stripping = 2,220 Cu. Yds.
 Remaining Location = 18,580 Cu. Yds.
 TOTAL CUT = 20,800 CU.YDS.
 FILL = 18,400 CU.YDS.

EXCESS MATERIAL = 2,400 Cu. Yds.
 Topsoil & Pit Backfill = 2,400 Cu. Yds.
 (1/2 Pit Vol.)
 EXCESS UNBALANCE = 0 Cu. Yds.
 (After Interim Rehabilitation)

UINTAH ENGINEERING & LAND SURVEYING
 85 So. 200 East * Vernal, Utah 84078 * (435) 789-1017