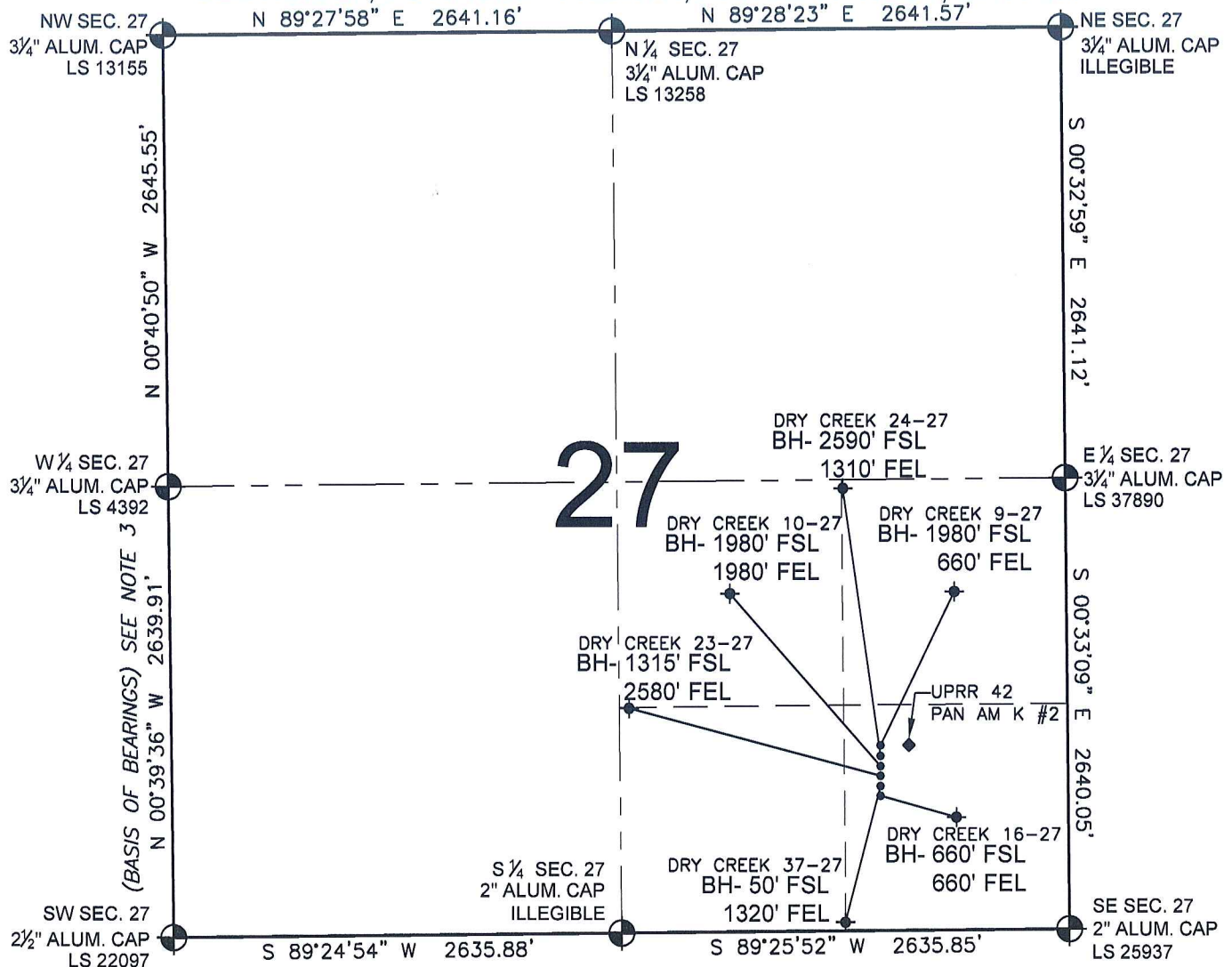


PAD DRAWING - DRY CREEK 6 PAD

SECTION 27, TOWNSHIP 1 NORTH, RANGE 67 WEST, 6TH P.M.



LEGEND

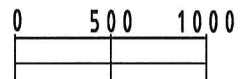
- = EXISTING MONUMENT
 = BOTTOM HOLE
 BH= BOTTOM HOLE
 = PROPOSED WELL
 = EXISTING WELL

NOTES:

- THIS SURVEY WAS DONE BY GPS METHODS AND CONFORMS TO THE MINIMUM STANDARDS SET BY THE C.O.G.C.C., RULE NO. 215
- ELEVATIONS SHOWN AT THE WELL HEAD, AS WELL AS HORIZONTAL CONTROL, ARE BASED ON GPS-RTK VALUES DERIVED FROM DOING 2-HOUR STATIC GPS SESSIONS AND REDUCTIONS USING O.P.U.S. SOLUTIONS.
VERTICAL = NAVD88; HORIZONTAL = NAD83/92
- THE BEARINGS SHOWN HEREON ARE BASED ON GPS OBSERVATIONS BETWEEN THE MONUMENTS SHOWN HEREON AS FOUND ON THE FIELD DATE BELOW.
- DISTANCES SHOWN ARE AT GROUND LEVEL, AS MEASURED IN THE FIELD, WITH TIES TO WELLS MEASURED AT A PERPENDICULAR TO SECTION LINES.

NOTES:

- DRY CREEK 9-27 TO BE AT 1084' FSL, 1104' FEL.
 BOTTOM HOLE AT 1980' FSL & 660' FEL.
 DRY CREEK 24-27 TO BE AT 1068' FSL, 1104' FEL.
 BOTTOM HOLE AT 2590' FSL & 1310' FEL.
 DRY CREEK 10-27 TO BE AT 1052' FSL, 1104' FEL.
 BOTTOM HOLE AT 1980' FSL & 1980' FEL.
 DRY CREEK 23-27 TO BE AT 1036' FSL, 1104' FEL.
 BOTTOM HOLE AT 1315' FSL & 2580' FEL.
 DRY CREEK 16-27 TO BE AT 1020' FSL, 1104' FEL.
 BOTTOM HOLE AT 660' FSL & 660' FEL.
 DRY CREEK 37-27 TO BE AT 1004' FSL, 1104' FEL.
 BOTTOM HOLE AT 50' FSL & 1320' FEL.
 UPRR 42 PAN AM K #2 IS 1084' FSL, 1054' FEL.



SCALE: 1"=1000'

REVISIONS

INITIAL	DATE

PREPARED BY:

PFS

Petroleum Field Services, LLC
1801 W. 13th Ave.
Denver, CO 80204



KERR-MCGEE OIL & GAS ONSHORE LP

FIELD DATE:
09-09-09

DRAWING DATE:
09-14-09

BY:
SMF

PAD NAME:

DRY CREEK 6 PAD

SURFACE LOCATION:

WELD COUNTY, COLORADO
SE 1/4 SE 1/4, SEC. 27, T1N, R67W