

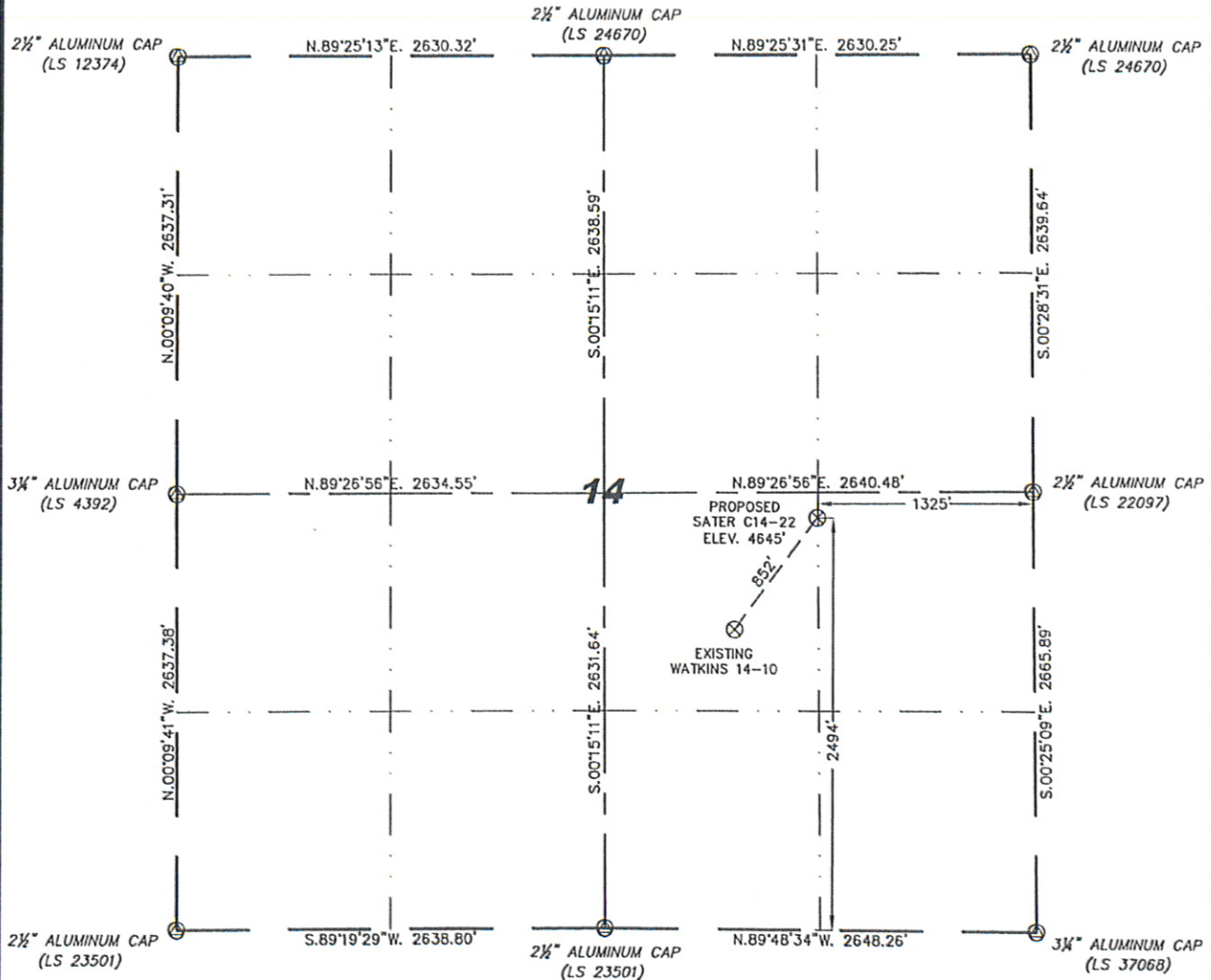
Steil Surveying Services, LLC

1102 West 19th Street P.O. BOX 2073

Cheyenne, Wyoming 82009

WELL LOCATION CERTIFICATE  
THIS MAP DOES NOT REPRESENT A BOUNDARY SURVEY

SECTION 14  
TOWNSHIP 4 NORTH  
RANGE 64 WEST



0 1000

Scale: 1" = 1000'

IN ACCORDANCE WITH A REQUEST FROM ERIK VAN DECAR - NOBLE ENERGY INC, STEIL SURVEYING SERVICES, LLC HAS DETERMINED THE LOCATION OF THE SATER C14-22 WELL TO BE 2494' FSL, 1325' FEL, AS MEASURED AT NINETY (90) DEGREES FROM THE SECTION LINES, SECTION 14, TOWNSHIP 4 NORTH, RANGE 64 WEST, 6TH PRINCIPLE MERIDIAN, WELD COUNTY, COLORADO.

I HEREBY CERTIFY THAT THIS WELL LOCATION CERTIFICATE WAS PREPARED BY ME, OR UNDER MY DIRECT SUPERVISION, THAT THE FIELD WORK WAS COMPLETED ON 12/10/2009, FOR AND ON BEHALF OF NOBLE ENERGY INC, THAT IT IS NOT A LAND SURVEY PLAT OR AN IMPROVEMENT SURVEY PLAT, AND THAT IT IS NOT TO BE RELIED UPON FOR ESTABLISHMENT OF FENCE, BUILDING, OR OTHER FUTURE IMPROVEMENT LINES.

NOTES:

- 1) BASIS OF BEARINGS FOR THIS MAP ARE BASED UPON GPS OBSERVATIONS MADE ON 08/13/2007 BETWEEN MONUMENTS LOCATED AT THE SOUTHEAST SECTION CORNER AND THE NORTHEAST SECTION CORNER OF SAID SECTION AND WITH ALL BEARINGS SHOWN HEREON RELATIVE THERETO.
- 2) ELEVATIONS ARE BASED UPON NGS OPUS SOLUTION NAVD 88 DATUM.
- 3) THE NEAREST EXISTING WELL IS: WATKINS 14-10, 852' SOUTHWEST.
- 4) SEE VISIBLE IMPROVEMENTS EXHIBIT FOR ALL IMPROVEMENTS WITHIN 400'.
- 5) THE LOCATION FALLS IN IRRIGATED CROP LAND.

LATITUDE & LONGITUDE (NAD 83 SURFACE HOLE):  
LATITUDE: N 40.31202°  
LONGITUDE: W 104.51312°  
PDOP: 2.3  
QUARTER-QUARTER: NW/4SE/4  
NEAREST PROPERTY LINE: 155' TO THE NORTH

LEGEND

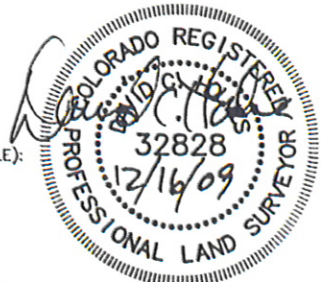
- (A) FOUND SURVEY MONUMENT PER MONUMENT RECORD - EXCEPTIONS NOTED.
- (C) CALCULATED DIMENSION

NOTICE: According to Colorado law you MUST commence any legal action based upon any defect in this W.L.C. within three years after you first discover such defect. In no event may any action based upon any defect in this W.L.C. be commenced more than ten years from this sold date of the certification shown hereon.

David C. Holmes  
Professional Land Surveyor Registration No. 32828  
State of Colorado

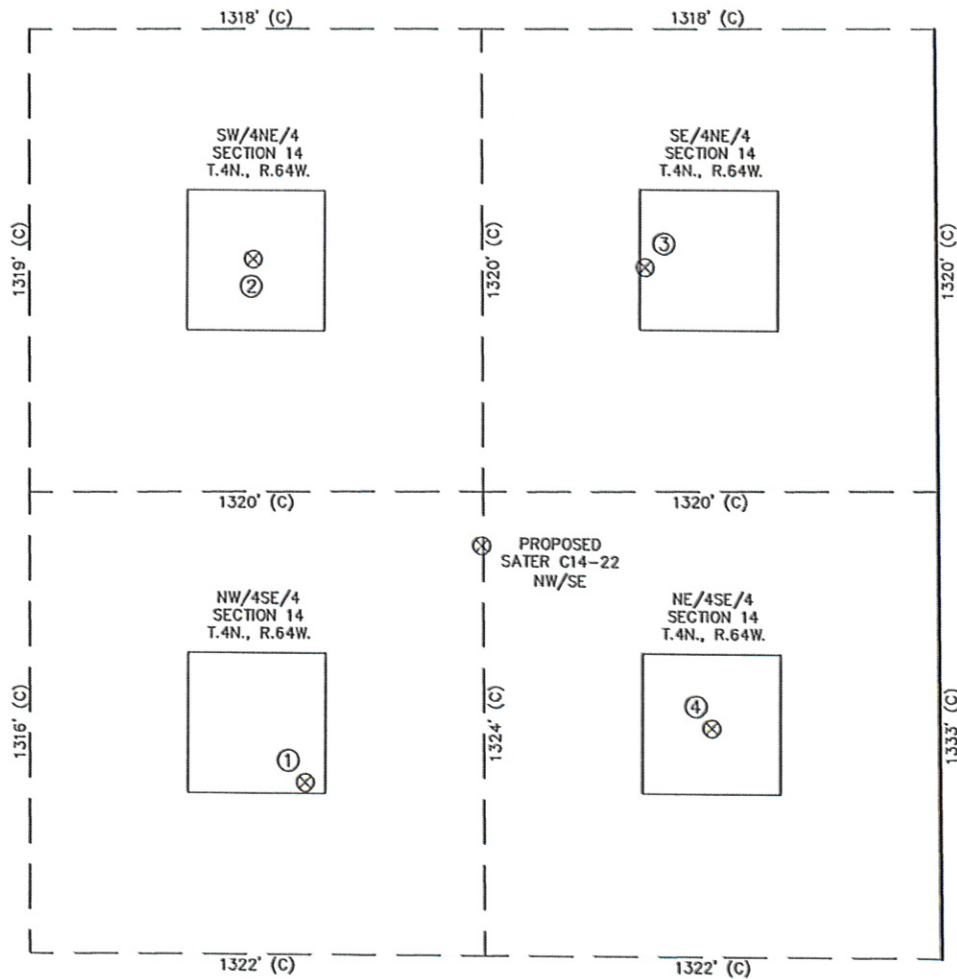
JOB #: 08086

Completed 12/15/2009



# SITE SKETCH - SATER C14-22

SECTION 14  
TOWNSHIP 4 NORTH  
RANGE 64 WEST



①	②	③	④
WATKINS 14-10 NW/SE SEC. 14 1811' FSL 1841' FEL EL 4646' N 40.31017 W 104.51498 PDOP 2.2	STINAR 14-1 SW/NE SEC. 14 1976' FNL 1987' FEL EL 4641' N 40.31427 W 104.51548 PDOP 2.2	STINAR 14-8 SE/NE SEC. 14 2000' FNL 844' FEL EL 4642' N 40.31420 W 104.51139 PDOP 2.2	C WATKINS #14-2 NE/SE SEC. 14 RECORD LOCATION 1980' FSL 660' FEL (PLUGGED & ABANDONED)

NOTES:  
1) THIS SKETCH DOES NOT REPRESENT A BOUNDARY SURVEY.  
2) THE DATUM FOR THE LATITUDES AND LONGITUDES ON THIS SKETCH IS NAD83.

