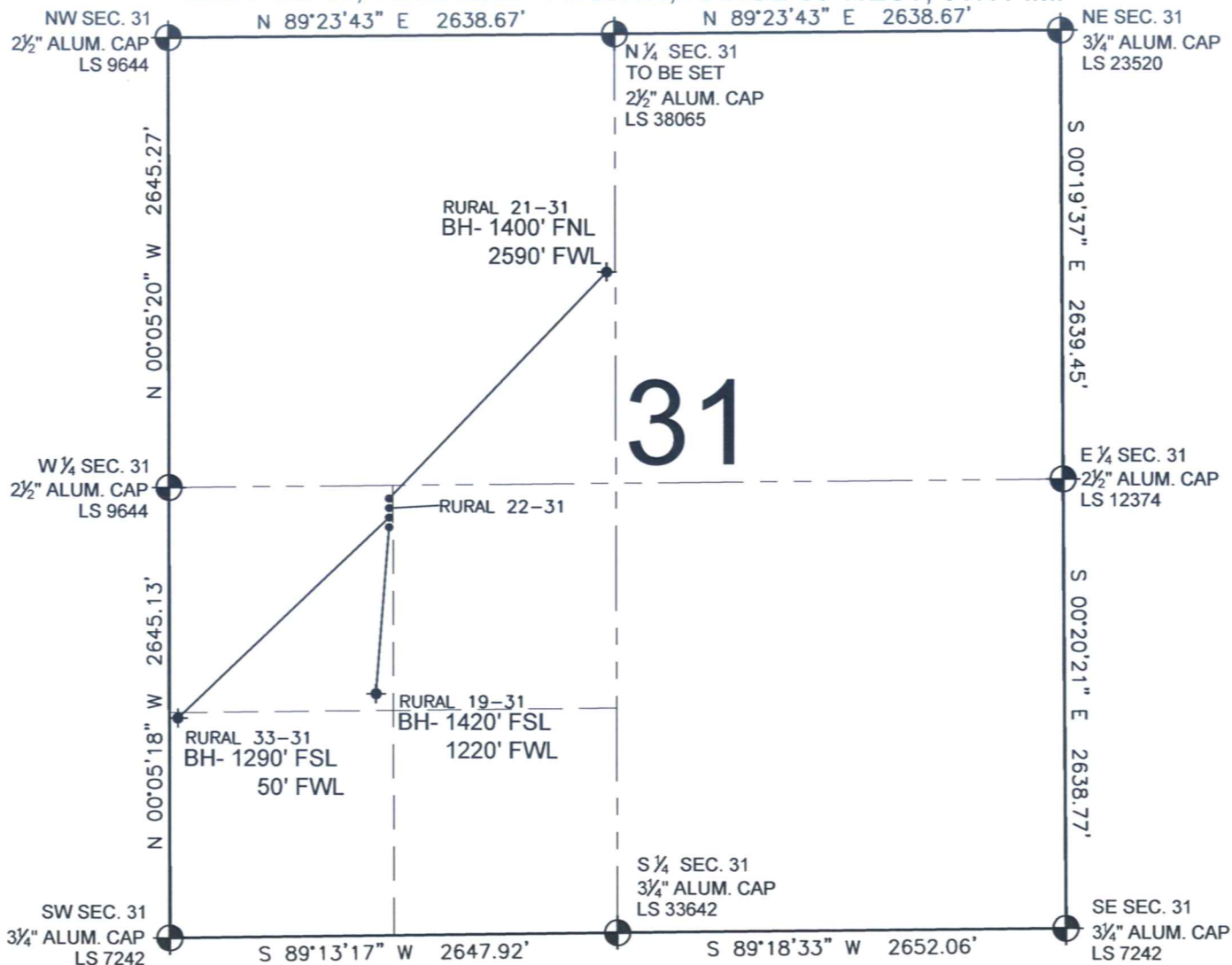


# PAD DRAWING - RURAL 22-31 PAD

SECTION 31, TOWNSHIP 4 NORTH, RANGE 65 WEST, 6TH P.M.



## NOTES:

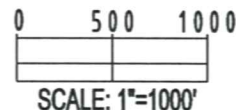
1. THIS SURVEY WAS DONE BY GPS METHODS AND CONFORMS TO THE MINIMUM STANDARDS SET BY THE C.O.G.C.C., RULE NO. 215
2. ELEVATIONS SHOWN AT THE WELL HEAD, AS WELL AS HORIZONTAL CONTROL, ARE BASED ON GPS-RTK VALUES DERIVED FROM DOING 2-HOUR STATIC GPS SESSIONS AND REDUCTIONS USING O.P.U.S. SOLUTIONS.  
VERTICAL = NAVD88; HORIZONTAL = NAD83/92
3. THE BEARINGS SHOWN HEREON ARE BASED ON GPS OBSERVATIONS BETWEEN THE MONUMENTS SHOWN HEREON AS FOUND ON THE FIELD DATE BELOW.
4. DISTANCES SHOWN ARE AT GROUND LEVEL, AS MEASURED IN THE FIELD, WITH TIES TO WELLS MEASURED AT A PERPENDICULAR TO SECTION LINES.


## LEGEND

- = EXISTING MONUMENT   
 = PROPOSED WELL   
 = BOTTOM HOLE   
 BH= BOTTOM HOLE

## NOTES:

RURAL 21-31 TO BE AT 2565' FSL, 1300' FWL.  
 BOTTOM HOLE AT 1400' FNL & 2590' FWL.  
 RURAL 22-31 TO BE AT 2550' FSL, 1300' FWL.  
 RURAL 33-31 TO BE AT 2535' FSL, 1300' FWL.  
 BOTTOM HOLE AT 1290' FSL & 50' FWL.  
 RURAL 19-31 TO BE AT 2520' FSL, 1300' FWL.  
 BOTTOM HOLE AT 1420' FSL & 1220' FWL.



REVISIONS		PREPARED BY:	 Petroleum Field Services, LLC 1801 W. 13th Ave. Denver, CO 80204
INITIAL	DATE		
SMF	07-31-09	KERR-MCGEE OIL & GAS ONSHORE LP	FIELD DATE: 06-25-09 PAD NAME: RURAL 4 PAD DRAWING DATE: 06-29-09 SURFACE LOCATION: WELD COUNTY, COLORADO NW 1/4 SW 1/4, SEC. 31, T4N, R65W
SMF	10-03-09		

KERR-MCGEE OIL & GAS ONSHORE LP

FIELD DATE:  
06-25-09

PAD NAME:  
RURAL 4 PAD

DRAWING DATE:  
06-29-09

SURFACE LOCATION:

BY:  
SMF

WELD COUNTY, COLORADO  
NW 1/4 SW 1/4, SEC. 31, T4N, R65W