

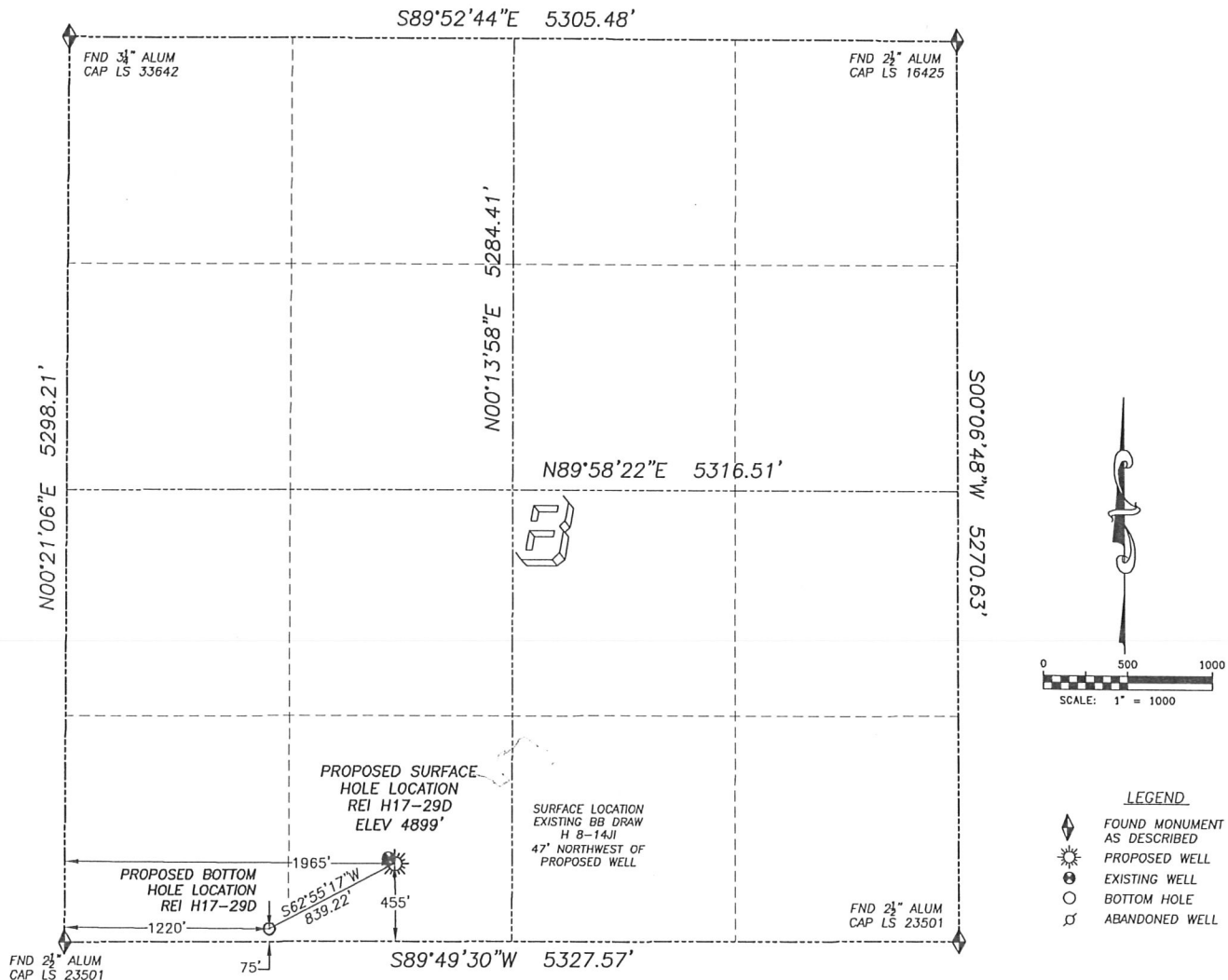
DALEY LAND SURVEYING, INC.

PARKER, CO. 80134

303 953 9841

WELL LOCATION CERTIFICATE REI H17-29D

SECTION 8, TOWNSHIP 3 NORTH, RANGE 65 WEST OF THE 6TH PRINCIPAL MERIDIAN



NAD 83 LATITUDE AND LONGITUDE

REI H17-29D SURFACE HOLE:

LATITUDE: N40.23389°
LONGITUDE: W104.68978°
ELEVATION: 4899'
PDOP 1.8
455' FSL, 1965' FWL

BOTTOM HOLE:

LATITUDE: N40.23284°
LONGITUDE: W104.69245°
75' FSL, 1220' FWL

NEAREST EXISTING WELL:

BB DRAW H 8-14JL SURFACE HOLE
LATITUDE: N40.23397°
LONGITUDE: W104.68991°
ELEVATION: 4899'
47' NORTHWEST

QUARTER/QUARTER: SE4/SW4

NEAREST APPARENT PROPERTY LINE:
290'± NORTHEAST

IN ACCORDANCE WITH A REQUEST FROM SEAN CASPER OF NOBLE ENERGY INC., DALEY LAND SURVEYING, INC. HAS DETERMINED THE SURFACE LOCATION OF THE REI H17-29D WELL TO BE 455' FSL, 1965' FWL, AS MEASURED AT NINETY (90) DEGREES FROM THE SECTION LINES OF SECTION 8, TOWNSHIP 3 NORTH, RANGE 65 WEST OF THE 6TH PRINCIPAL MERIDIAN, WELD COUNTY COLORADO.

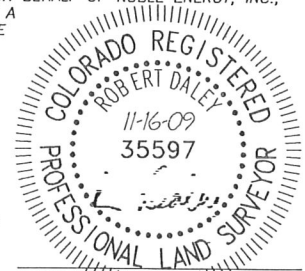
THE BOTTOM HOLE LOCATION PROVIDED BY THE CLIENT IS TO BE 75' FSL, 1220' FWL OF SEC. 8, T.3N, R.65W.

I HEREBY CERTIFY THAT THIS WELL LOCATION CERTIFICATE WAS PREPARED BY ME OR UNDER MY DIRECT SUPERVISION, THAT THE WORK WAS COMPLETED ON 11/13/2009 FOR AND ON BEHALF OF NOBLE ENERGY, INC., AND THAT THIS MAP DOES NOT REPRESENT A BOUNDARY SURVEY, IT IS NOT A LAND SURVEY PLAT OR AN IMPROVEMENT SURVEY PLAT AND IT IS NOT TO BE RELIED UPON FOR THE ESTABLISHMENT OF FENCE, BUILDING OR OTHER FUTURE IMPROVEMENT LINES.

NOTES:

- 1) BASIS OF BEARING FOR THIS MAP IS ASSUMED AND BASED UPON GPS OBSERVATIONS MADE BETWEEN MONUMENTS LOCATED AT THE SOUTHWEST AND SOUTHEAST CORNERS OF SECTION 8, T.3N., R.65W., AND ALL BEARINGS SHOWN HEREON ARE RELATIVE THERETO.
- 2) HORIZONTAL DATUM IS NAD83.
- 3) VERTICAL DATUM IS NAVD83. ELEVATIONS ARE DERIVED FROM GPS-RTK OBSERVATIONS PROCESSED THROUGH OPUS, UTILIZING THE GEOID03 MODEL.
- 4) SEE VISIBLE IMPROVEMENTS EXHIBIT FOR VISIBLE IMPROVEMENTS WITHIN 400' OF PROPOSED SURFACE HOLE LOCATION
- 5) SURFACE USE: OPEN FIELD

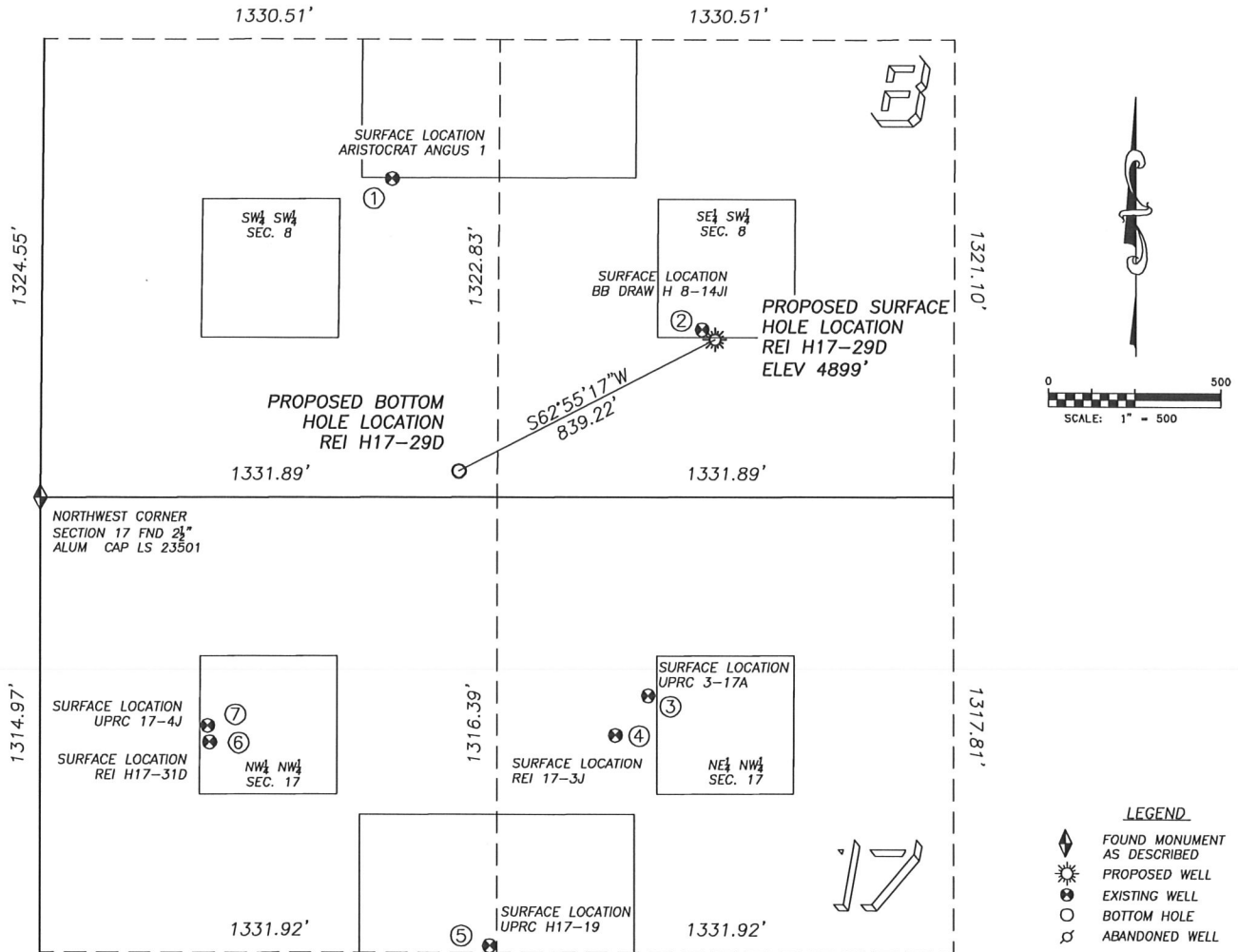
NOTICE: According to Colorado law you MUST commence any legal action based upon any defect in this W.L.C. within three years after you first discover such defect. In no event may any action based upon any such defect in this W.L.C. be commenced more than ten years from the date of the certification shown hereon.



FOR AND ON BEHALF OF
DALEY LAND SURVEYING INC.,
Robert Daley, PLS 35597

303 953 9841

SECTION 8, TOWNSHIP 3 NORTH, RANGE 65 WEST OF THE 6TH PRINCIPAL MERIDIAN



- ① **ARISTOCRAT ANGUS 1**
SW/SW SEC. 8
920' FSL, 1019' FWL
867' NW OF PROPOSED
BOTTOM HOLE LOCATION
LAT. N40.23516"
LONG. W104.69316"
EL: 4904'
PDOP 1.6

② **BB DRAW H 8-14J1**
SE/SW SEC. 8
484' FSL, 1927' FWL
820' NE OF PROPOSED
BOTTOM HOLE LOCATION
LAT. N40.23397"
LONG. W104.68991"
EL: 4899'
PDOP 1.7

③ **HSR-REI 3-17A**
NE/NW SEC. 17
574' FNL, 1773' FWL
851' SE OF PROPOSED
BOTTOM HOLE LOCATION
LAT. N40.23106"
LONG. W104.69047"
EL: 4903'
PDOP 2.2

④ **UPRC 17-3J**
NE/NW SEC. 17
688' FNL, 1677' FWL
888' SE OF PROPOSED
BOTTOM HOLE LOCATION
LAT. N40.23075"
LONG. W104.69082"
EL: 4909'
PDOP 2.1

⑤ **UPRC H17-19**
NW/NW SEC. 17
1296' FNL, 1311' FWL
1374' S OF PROPOSED
BOTTOM HOLE LOCATION
LAT. N40.22908"
LONG. W104.69213"
EL: 4929'
PDOP 2.3

⑥ **REI H17-31D**
NW/NW SEC. 17
707' FNL, 494' FWL
1069' SW OF PROPOSED
BOTTOM HOLE LOCATION
LAT. N40.23069"
LONG. W104.69505"
EL: 4922'
PDOP 2.1

⑦ **UPRC 17-4J**
NW/NW SEC. 17
660' FNL, 489' FWL
1038' SW OF PROPOSED
BOTTOM HOLE LOCATION
LAT. N40.23082"
LONG. W104.69507"
EL: 4923'
PDOP 2.8

NOTES:
1) THIS DOES NOT
2) THE LATITUDES
REFERENCED TO
3) DATUM FOR ELE
DERIVED FROM
THROUGH OPUS

- 1) THIS DOES NOT REPRESENT A BOUNDARY SURVEY
- 2) THE LATITUDES AND LONGITUDES SHOWN ARE REFERENCED TO NAD83
- 3) DATUM FOR ELEVATION IS NAVD88. ELEVATIONS ARE DERIVED FROM GPS-RTK OBSERVATIONS PROCESSED THROUGH OPUS, UTILIZING THE GEOID03 MODEL.