



# **US ROCKIES REGION PLANNING**

**KERR MCGEE OIL & GAS ONSHORE LP**

**WELD\_DRY CREEK PAD 7**

**P\_DRY CREEK 31-27**

**P\_DRY CREEK 31-27**

**Plan: PLAN #1 10-26-09 RHS**

## **Standard Planning Report**

**26 October, 2009**





WELL DETAILS: P_DRY CREEK 31-27						
+N/-S	+E/-W	Northing	Ground Level:	5008.00	Latitude	Longitude
0.00	0.00	1252968.60	Easting	3173097.99	40° 1' 34.068 N	104° 52' 54.804 W
Slot						

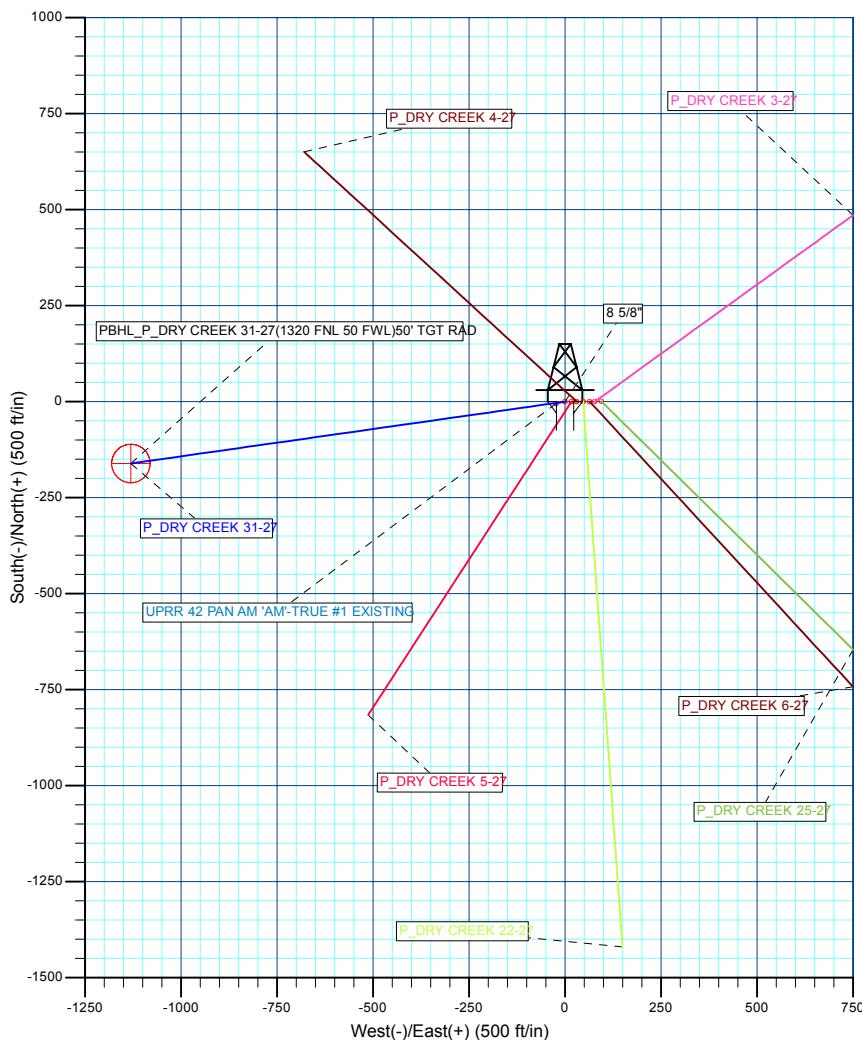
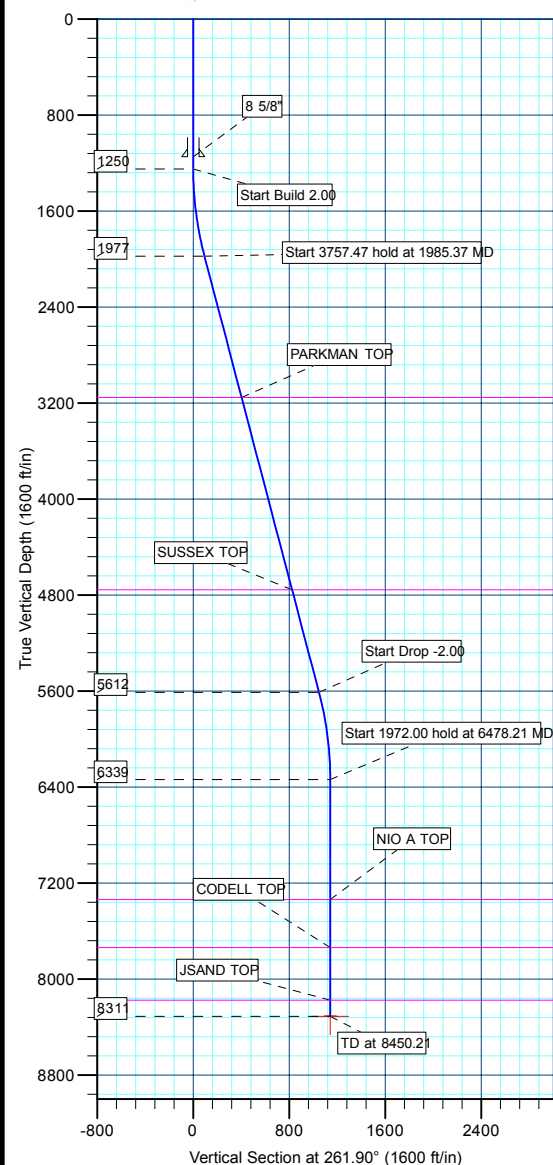
FORMATION TOP DETAILS		
TVDPath	MDPath	Formation
3155.00	3202.94	PARKMAN TOP
4757.00	4859.21	SUSSEX TOP
7339.00	7478.21	NIO A TOP
7739.00	7878.21	CODELL TOP
8176.00	8315.21	JSAND TOP

SECTION DETAILS										
MD	Inc	Azi	TVD	+N/-S	+E/-W	DLeg	TFace	VSec	Target	
0.00	0.00	0.00	0.00	0.00	0.00	0.00	0.00	0.00		
1250.00	0.00	0.00	1250.00	0.00	0.00	0.00	0.00	0.00		
1985.37	14.71	261.90	1977.32	-13.22	-92.93	2.00	261.90	93.87		
5742.84	14.71	261.90	5611.68	-147.62	-1037.37	0.00	0.00	1047.82		
6478.21	0.00	0.00	6339.00	-160.84	-1130.30	2.00	180.00	1141.69		
8450.21	0.00	0.00	8311.00	-160.84	-1130.30	0.00	0.00	1141.69		PBHL_P_DRY CREEK 31-27(1320 FNL 50 FWL)50' TGT RAD

CASING DETAILS			
TVD	MD	Name	Size
1150.00	1150.00	8 5/8"	8.62



KB ELEV: WELL @ 5023.00ft (Original Well Elev)  
 GRD ELEV: 5008.00



WELLBORE TARGET DETAILS (MAP CO-ORDINATES AND LAT/LONG)									
Name	TVD	+N/-S	+E/-W	Northing	Easting	Latitude	Longitude	Shape	
PBHL	8311.00	-160.84	-1130.30	1252807.76	3171967.69	40° 1' 32.556 N	104° 53' 9.348 W	Circle (Radius: 50.00)	

Plan: PLAN #1 10-26-09 RHS (P\_DRY CREEK 31-27/P\_DRY CREEK 31-27)

Created By: Robert H. Scott

<b>Database:</b>	EDM 2003.21 Single User Db	<b>Local Co-ordinate Reference:</b>	Well P_DRY CREEK 31-27
<b>Company:</b>	US ROCKIES REGION PLANNING	<b>TVD Reference:</b>	WELL @ 5023.00ft (Original Well Elev)
<b>Project:</b>	KERR MCGEE OIL & GAS ONSHORE LP	<b>MD Reference:</b>	WELL @ 5023.00ft (Original Well Elev)
<b>Site:</b>	WELD_DRY CREEK PAD 7	<b>North Reference:</b>	Grid
<b>Well:</b>	P_DRY CREEK 31-27	<b>Survey Calculation Method:</b>	Minimum Curvature
<b>Wellbore:</b>	P_DRY CREEK 31-27		
<b>Design:</b>	PLAN #1 10-26-09 RHS		

<b>Project</b>	KERR MCGEE OIL & GAS ONSHORE LP, KERR MCGEE OIL & GAS ONSHORE LP		
<b>Map System:</b>	US State Plane 1983	<b>System Datum:</b>	Mean Sea Level
<b>Geo Datum:</b>	North American Datum 1983		
<b>Map Zone:</b>	Colorado Northern Zone		

Site						WELD_DRY CREEK PAD 7, SECTION 27 T1N R67W											
Site Position:						Northing:			1,252,969.16 ft			Latitude:			40° 1' 34.068 N		
From:			Lat/Long			Easting:			3,173,176.40 ft			Longitude:			104° 52' 53.796 W		
Position Uncertainty:			0.00 ft			Slot Radius:			in			Grid Convergence:			0.40 °		

Well	P_DRY CREEK 31-27					
Well Position	+N/-S	-0.56 ft	Northing:	1,252,968.60 ft	Latitude:	40° 1' 34.068 N
	+E/-W	-78.41 ft	Easting:	3,173,097.99 ft	Longitude:	104° 52' 54.804 W
Position Uncertainty		0.00 ft	Wellhead Elevation:	ft	Ground Level:	5,008.00 ft

<b>Wellbore</b>	P_DRY CREEK 31-27				
<b>Magnetics</b>	<b>Model Name</b>	<b>Sample Date</b>	<b>Declination (°)</b>	<b>Dip Angle (°)</b>	<b>Field Strength (nT)</b>
	IGRF200510	10/26/2009	9.08	66.79	53,112

<b>Design</b>	PLAN #1 10-26-09 RHS			
<b>Audit Notes:</b>				
<b>Version:</b>	<b>Phase:</b>	PLAN	<b>Tie On Depth:</b>	0.00
<b>Vertical Section:</b>	<b>Depth From (TVD) (ft)</b>	<b>+N/-S (ft)</b>	<b>+E/-W (ft)</b>	<b>Direction (°)</b>
	0.00	0.00	0.00	261.90

<b>Plan Sections</b>										
Measured Depth (ft)	Inclination (°)	Azimuth (°)	Vertical Depth (ft)	+N/-S (ft)	+E/-W (ft)	Dogleg Rate (°/100ft)	Build Rate (°/100ft)	Turn Rate (°/100ft)	TFO (°)	Target
0.00	0.00	0.00	0.00	0.00	0.00	0.00	0.00	0.00	0.00	
1,250.00	0.00	0.00	1,250.00	0.00	0.00	0.00	0.00	0.00	0.00	
1,985.37	14.71	261.90	1,977.32	-13.22	-92.93	2.00	2.00	0.00	261.90	
5,742.84	14.71	261.90	5,611.68	-147.62	-1,037.37	0.00	0.00	0.00	0.00	
6,478.21	0.00	0.00	6,339.00	-160.84	-1,130.30	2.00	-2.00	0.00	180.00	
8,450.21	0.00	0.00	8,311.00	-160.84	-1,130.30	0.00	0.00	0.00	0.00	PBHL_P_DRY CRE

<b>Database:</b>	EDM 2003.21 Single User Db	<b>Local Co-ordinate Reference:</b>	Well P_DRY CREEK 31-27
<b>Company:</b>	US ROCKIES REGION PLANNING	<b>TVD Reference:</b>	WELL @ 5023.00ft (Original Well Elev)
<b>Project:</b>	KERR MCGEE OIL & GAS ONSHORE LP	<b>MD Reference:</b>	WELL @ 5023.00ft (Original Well Elev)
<b>Site:</b>	WELD_DRY CREEK PAD 7	<b>North Reference:</b>	Grid
<b>Well:</b>	P_DRY CREEK 31-27	<b>Survey Calculation Method:</b>	Minimum Curvature
<b>Wellbore:</b>	P_DRY CREEK 31-27		
<b>Design:</b>	PLAN #1 10-26-09 RHS		

Planned Survey									
Measured Depth (ft)	Inclination (°)	Azimuth (°)	Vertical Depth (ft)	+N/-S (ft)	+E/-W (ft)	Vertical Section (ft)	Dogleg Rate (°/100ft)	Build Rate (°/100ft)	Turn Rate (°/100ft)
<b>Start Build 2.00</b>									
1,250.00	0.00	0.00	1,250.00	0.00	0.00	0.00	0.00	0.00	0.00
1,300.00	1.00	261.90	1,300.00	-0.06	-0.43	0.44	2.00	2.00	0.00
1,400.00	3.00	261.90	1,399.93	-0.55	-3.89	3.93	2.00	2.00	0.00
1,500.00	5.00	261.90	1,499.68	-1.54	-10.79	10.90	2.00	2.00	0.00
1,600.00	7.00	261.90	1,599.13	-3.01	-21.14	21.35	2.00	2.00	0.00
1,700.00	9.00	261.90	1,698.15	-4.97	-34.92	35.27	2.00	2.00	0.00
1,800.00	11.00	261.90	1,796.63	-7.42	-52.11	52.63	2.00	2.00	0.00
1,900.00	13.00	261.90	1,894.44	-10.34	-72.69	73.42	2.00	2.00	0.00
<b>Start 3757.47 hold at 1985.37 MD</b>									
1,985.37	14.71	261.90	1,977.32	-13.22	-92.93	93.87	2.00	2.00	0.00
2,000.00	14.71	261.90	1,991.47	-13.75	-96.61	97.58	0.00	0.00	0.00
2,100.00	14.71	261.90	2,088.19	-17.32	-121.74	122.97	0.00	0.00	0.00
2,200.00	14.71	261.90	2,184.92	-20.90	-146.88	148.36	0.00	0.00	0.00
2,300.00	14.71	261.90	2,281.64	-24.48	-172.01	173.74	0.00	0.00	0.00
2,400.00	14.71	261.90	2,378.37	-28.05	-197.15	199.13	0.00	0.00	0.00
2,500.00	14.71	261.90	2,475.09	-31.63	-222.28	224.52	0.00	0.00	0.00
2,600.00	14.71	261.90	2,571.81	-35.21	-247.42	249.91	0.00	0.00	0.00
2,700.00	14.71	261.90	2,668.54	-38.78	-272.55	275.30	0.00	0.00	0.00
2,800.00	14.71	261.90	2,765.26	-42.36	-297.69	300.69	0.00	0.00	0.00
2,900.00	14.71	261.90	2,861.98	-45.94	-322.82	326.07	0.00	0.00	0.00
3,000.00	14.71	261.90	2,958.71	-49.51	-347.96	351.46	0.00	0.00	0.00
3,100.00	14.71	261.90	3,055.43	-53.09	-373.09	376.85	0.00	0.00	0.00
3,200.00	14.71	261.90	3,152.15	-56.67	-398.23	402.24	0.00	0.00	0.00
<b>PARKMAN TOP</b>									
3,202.94	14.71	261.90	3,155.00	-56.77	-398.97	402.99	0.00	0.00	0.00
3,300.00	14.71	261.90	3,248.88	-60.24	-423.36	427.63	0.00	0.00	0.00
3,400.00	14.71	261.90	3,345.60	-63.82	-448.50	453.02	0.00	0.00	0.00
3,500.00	14.71	261.90	3,442.32	-67.40	-473.63	478.40	0.00	0.00	0.00
3,600.00	14.71	261.90	3,539.05	-70.97	-498.77	503.79	0.00	0.00	0.00
3,700.00	14.71	261.90	3,635.77	-74.55	-523.90	529.18	0.00	0.00	0.00
3,800.00	14.71	261.90	3,732.49	-78.13	-549.04	554.57	0.00	0.00	0.00
3,900.00	14.71	261.90	3,829.22	-81.70	-574.17	579.96	0.00	0.00	0.00
4,000.00	14.71	261.90	3,925.94	-85.28	-599.31	605.35	0.00	0.00	0.00
4,100.00	14.71	261.90	4,022.66	-88.86	-624.44	630.73	0.00	0.00	0.00
4,200.00	14.71	261.90	4,119.39	-92.43	-649.58	656.12	0.00	0.00	0.00
4,300.00	14.71	261.90	4,216.11	-96.01	-674.71	681.51	0.00	0.00	0.00
4,400.00	14.71	261.90	4,312.84	-99.59	-699.85	706.90	0.00	0.00	0.00
4,500.00	14.71	261.90	4,409.56	-103.16	-724.98	732.29	0.00	0.00	0.00
4,600.00	14.71	261.90	4,506.28	-106.74	-750.12	757.68	0.00	0.00	0.00
4,700.00	14.71	261.90	4,603.01	-110.32	-775.25	783.06	0.00	0.00	0.00
4,800.00	14.71	261.90	4,699.73	-113.89	-800.39	808.45	0.00	0.00	0.00
<b>SUSSEX TOP</b>									
4,859.21	14.71	261.90	4,757.00	-116.01	-815.27	823.48	0.00	0.00	0.00
4,900.00	14.71	261.90	4,796.45	-117.47	-825.52	833.84	0.00	0.00	0.00
5,000.00	14.71	261.90	4,893.18	-121.05	-850.66	859.23	0.00	0.00	0.00
5,100.00	14.71	261.90	4,989.90	-124.62	-875.79	884.62	0.00	0.00	0.00
5,200.00	14.71	261.90	5,086.62	-128.20	-900.93	910.01	0.00	0.00	0.00
5,300.00	14.71	261.90	5,183.35	-131.78	-926.06	935.39	0.00	0.00	0.00
5,400.00	14.71	261.90	5,280.07	-135.35	-951.20	960.78	0.00	0.00	0.00
5,500.00	14.71	261.90	5,376.79	-138.93	-976.33	986.17	0.00	0.00	0.00
5,600.00	14.71	261.90	5,473.52	-142.51	-1,001.47	1,011.56	0.00	0.00	0.00
5,700.00	14.71	261.90	5,570.24	-146.08	-1,026.61	1,036.95	0.00	0.00	0.00

<b>Database:</b>	EDM 2003.21 Single User Db	<b>Local Co-ordinate Reference:</b>	Well P_DRY CREEK 31-27
<b>Company:</b>	US ROCKIES REGION PLANNING	<b>TVD Reference:</b>	WELL @ 5023.00ft (Original Well Elev)
<b>Project:</b>	KERR MCGEE OIL & GAS ONSHORE LP	<b>MD Reference:</b>	WELL @ 5023.00ft (Original Well Elev)
<b>Site:</b>	WELD_DRY CREEK PAD 7	<b>North Reference:</b>	Grid
<b>Well:</b>	P_DRY CREEK 31-27	<b>Survey Calculation Method:</b>	Minimum Curvature
<b>Wellbore:</b>	P_DRY CREEK 31-27		
<b>Design:</b>	PLAN #1 10-26-09 RHS		

#### Planned Survey

Measured Depth (ft)	Inclination (°)	Azimuth (°)	Vertical Depth (ft)	+N/-S (ft)	+E/-W (ft)	Vertical Section (ft)	Dogleg Rate (°/100ft)	Build Rate (°/100ft)	Turn Rate (°/100ft)
<b>Start Drop -2.00</b>									
5,742.84	14.71	261.90	5,611.68	-147.62	-1,037.37	1,047.82	0.00	0.00	0.00
5,800.00	13.56	261.90	5,667.11	-149.58	-1,051.19	1,061.78	2.00	-2.00	0.00
5,900.00	11.56	261.90	5,764.71	-152.65	-1,072.73	1,083.54	2.00	-2.00	0.00
6,000.00	9.56	261.90	5,863.01	-155.23	-1,090.88	1,101.87	2.00	-2.00	0.00
6,100.00	7.56	261.90	5,961.89	-157.33	-1,105.62	1,116.76	2.00	-2.00	0.00
6,200.00	5.56	261.90	6,061.22	-158.94	-1,116.94	1,128.19	2.00	-2.00	0.00
6,300.00	3.56	261.90	6,160.90	-160.06	-1,124.82	1,136.15	2.00	-2.00	0.00
6,400.00	1.56	261.90	6,260.80	-160.69	-1,129.25	1,140.62	2.00	-2.00	0.00
<b>Start 1972.00 hold at 6478.21 MD</b>									
6,478.21	0.00	0.00	6,339.00	-160.84	-1,130.30	1,141.69	2.00	-2.00	125.43
6,500.00	0.00	0.00	6,360.79	-160.84	-1,130.30	1,141.69	0.00	0.00	0.00
6,600.00	0.00	0.00	6,460.79	-160.84	-1,130.30	1,141.69	0.00	0.00	0.00
6,700.00	0.00	0.00	6,560.79	-160.84	-1,130.30	1,141.69	0.00	0.00	0.00
6,800.00	0.00	0.00	6,660.79	-160.84	-1,130.30	1,141.69	0.00	0.00	0.00
6,900.00	0.00	0.00	6,760.79	-160.84	-1,130.30	1,141.69	0.00	0.00	0.00
7,000.00	0.00	0.00	6,860.79	-160.84	-1,130.30	1,141.69	0.00	0.00	0.00
7,100.00	0.00	0.00	6,960.79	-160.84	-1,130.30	1,141.69	0.00	0.00	0.00
7,200.00	0.00	0.00	7,060.79	-160.84	-1,130.30	1,141.69	0.00	0.00	0.00
7,300.00	0.00	0.00	7,160.79	-160.84	-1,130.30	1,141.69	0.00	0.00	0.00
7,400.00	0.00	0.00	7,260.79	-160.84	-1,130.30	1,141.69	0.00	0.00	0.00
<b>NIO A TOP</b>									
7,478.21	0.00	0.00	7,339.00	-160.84	-1,130.30	1,141.69	0.00	0.00	0.00
7,500.00	0.00	0.00	7,360.79	-160.84	-1,130.30	1,141.69	0.00	0.00	0.00
7,600.00	0.00	0.00	7,460.79	-160.84	-1,130.30	1,141.69	0.00	0.00	0.00
7,700.00	0.00	0.00	7,560.79	-160.84	-1,130.30	1,141.69	0.00	0.00	0.00
7,800.00	0.00	0.00	7,660.79	-160.84	-1,130.30	1,141.69	0.00	0.00	0.00
<b>CODELL TOP</b>									
7,878.21	0.00	0.00	7,739.00	-160.84	-1,130.30	1,141.69	0.00	0.00	0.00
7,900.00	0.00	0.00	7,760.79	-160.84	-1,130.30	1,141.69	0.00	0.00	0.00
8,000.00	0.00	0.00	7,860.79	-160.84	-1,130.30	1,141.69	0.00	0.00	0.00
8,100.00	0.00	0.00	7,960.79	-160.84	-1,130.30	1,141.69	0.00	0.00	0.00
8,200.00	0.00	0.00	8,060.79	-160.84	-1,130.30	1,141.69	0.00	0.00	0.00
8,300.00	0.00	0.00	8,160.79	-160.84	-1,130.30	1,141.69	0.00	0.00	0.00
<b>JSAND TOP</b>									
8,315.21	0.00	0.00	8,176.00	-160.84	-1,130.30	1,141.69	0.00	0.00	0.00
8,400.00	0.00	0.00	8,260.79	-160.84	-1,130.30	1,141.69	0.00	0.00	0.00
<b>PBHL_P_DRY CREEK 31-27(1320 FNL 50 FWL)50' TGT RAD</b>									
8,450.21	0.00	0.00	8,311.00	-160.84	-1,130.30	1,141.69	0.00	0.00	0.00

#### Design Targets

Target Name	Dip Angle (°)	Dip Dir. (°)	TVD (ft)	+N/-S (ft)	+E/-W (ft)	Northing (ft)	Easting (ft)	Latitude	Longitude
- hit/miss target									
- Shape									
PBHL_P_DRY CREEK	0.00	0.00	8,311.00	-160.84	-1,130.30	1,252,807.76	3,171,967.69	40° 1' 32.556 N	104° 53' 9.348 W
- plan hits target center									
- Circle (radius 50.00)									

<b>Database:</b>	EDM 2003.21 Single User Db	<b>Local Co-ordinate Reference:</b>	Well P_DRY CREEK 31-27
<b>Company:</b>	US ROCKIES REGION PLANNING	<b>TVD Reference:</b>	WELL @ 5023.00ft (Original Well Elev)
<b>Project:</b>	KERR MCGEE OIL & GAS ONSHORE LP	<b>MD Reference:</b>	WELL @ 5023.00ft (Original Well Elev)
<b>Site:</b>	WELD_DRY CREEK PAD 7	<b>North Reference:</b>	Grid
<b>Well:</b>	P_DRY CREEK 31-27	<b>Survey Calculation Method:</b>	Minimum Curvature
<b>Wellbore:</b>	P_DRY CREEK 31-27		
<b>Design:</b>	PLAN #1 10-26-09 RHS		

Casing Points					
Measured Depth (ft)	Vertical Depth (ft)	Name	Casing Diameter (in)	Hole Diameter (in)	
1,150.00	1,150.00	8 5/8"	8.62	11.00	

Formations						
Measured Depth (ft)	Vertical Depth (ft)	Name	Lithology	Dip (°)	Dip Direction (°)	
3,202.94	3,155.00	PARKMAN TOP				
4,859.21	4,757.00	SUSSEX TOP				
7,478.21	7,339.00	NIO A TOP				
7,878.21	7,739.00	CODELL TOP				
8,315.21	8,176.00	JSAND TOP				

Plan Annotations					
Measured Depth (ft)	Vertical Depth (ft)	Local Coordinates			
		+N/-S (ft)	+E/-W (ft)	Comment	
1,250.00	1,250.00	0.00	0.00	Start Build 2.00	
1,985.37	1,977.32	-13.22	-92.93	Start 3757.47 hold at 1985.37 MD	
5,742.84	5,611.68	-147.62	-1,037.37	Start Drop -2.00	
6,478.21	6,339.00	-160.84	-1,130.30	Start 1972.00 hold at 6478.21 MD	
8,450.21	8,311.00	-160.84	-1,130.30	TD at 8450.21	



# **US ROCKIES REGION PLANNING**

**KERR MCGEE OIL & GAS ONSHORE LP  
WELD\_DRY CREEK PAD 7  
P\_DRY CREEK 31-27**

**P\_DRY CREEK 31-27  
PLAN #1 10-26-09 RHS**

## **Anticollision Report**

**26 October, 2009**



<b>Company:</b>	US ROCKIES REGION PLANNING	<b>Local Co-ordinate Reference:</b>	Well P_DRY CREEK 31-27
<b>Project:</b>	KERR MCGEE OIL & GAS ONSHORE LP	<b>TVD Reference:</b>	WELL @ 5023.00ft (Original Well Elev)
<b>Reference Site:</b>	WELD_DRY CREEK PAD 7	<b>MD Reference:</b>	WELL @ 5023.00ft (Original Well Elev)
<b>Site Error:</b>	0.00ft	<b>North Reference:</b>	Grid
<b>Reference Well:</b>	P_DRY CREEK 31-27	<b>Survey Calculation Method:</b>	Minimum Curvature
<b>Well Error:</b>	0.00ft	<b>Output errors are at</b>	2.00 sigma
<b>Reference Wellbore</b>	P_DRY CREEK 31-27	<b>Database:</b>	EDM 2003.21 Single User Db
<b>Reference Design:</b>	PLAN #1 10-26-09 RHS	<b>Offset TVD Reference:</b>	Offset Datum

<b>Reference</b>	PLAN #1 10-26-09 RHS		
<b>Filter type:</b>	NO GLOBAL FILTER: Using user defined selection & filtering criteria		
<b>Interpolation Method:</b>	Stations	<b>Error Model:</b>	ISCWSA
<b>Depth Range:</b>	0.00 to 20,000.00ft	<b>Scan Method:</b>	Closest Approach 3D
<b>Results Limited by:</b>	Maximum center-center distance of 10,000.00ft	<b>Error Surface:</b>	Elliptical Conic
<b>Warning Levels Evaluated at:</b>	2.00 Sigma		

<b>Survey Tool Program</b>	<b>Date</b>	10/26/2009		
<b>From (ft)</b>	<b>To (ft)</b>	<b>Survey (Wellbore)</b>	<b>Tool Name</b>	<b>Description</b>
0.00	8,450.21	PLAN #1 10-26-09 RHS (P_DRY CREEK	Good_gyro	Good Gyro

Summary						
Site Name	Reference Measured Depth (ft)	Offset Measured Depth (ft)	Distance Between Centres (ft)	Distance Between Ellipses (ft)	Separation Factor	Warning
Offset Well - Wellbore - Design						
WELD_DRY CREEK PAD 7						
P_DRY CREEK 22-27 - P_DRY CREEK 22-27 - PLAN #	1,250.00	1,250.00	47.61	44.28	14.310	CC, ES
P_DRY CREEK 22-27 - P_DRY CREEK 22-27 - PLAN #	1,300.00	1,299.94	48.07	44.62	13.933	SF
P_DRY CREEK 25-27 - P_DRY CREEK 25-27 - PLAN #	1,250.00	1,250.00	95.22	91.89	28.619	CC, ES
P_DRY CREEK 25-27 - P_DRY CREEK 25-27 - PLAN #	1,400.00	1,396.24	101.84	98.16	27.720	SF
P_DRY CREEK 3-27 - P_DRY CREEK 3-27 - PLAN #1 1	1,250.00	1,250.00	78.41	75.09	23.569	CC, ES
P_DRY CREEK 3-27 - P_DRY CREEK 3-27 - PLAN #1 1	1,300.00	1,298.90	79.19	75.73	22.891	SF
P_DRY CREEK 4-27 - P_DRY CREEK 4-27 - PLAN #1 1	1,250.00	1,250.00	30.81	27.48	9.259	CC
P_DRY CREEK 4-27 - P_DRY CREEK 4-27 - PLAN #1 1	1,300.00	1,300.39	30.92	27.45	8.927	ES
P_DRY CREEK 4-27 - P_DRY CREEK 4-27 - PLAN #1 1	1,400.00	1,401.11	31.96	28.23	8.569	SF
P_DRY CREEK 5-27 - P_DRY CREEK 5-27 - PLAN #1 1	1,250.00	1,250.00	16.80	13.48	5.050	CC, ES
P_DRY CREEK 5-27 - P_DRY CREEK 5-27 - PLAN #1 1	1,300.00	1,300.16	17.00	13.55	4.924	SF
P_DRY CREEK 6-27 - P_DRY CREEK 6-27 - PLAN #1 1	1,250.00	1,250.00	64.41	61.08	19.360	CC, ES
P_DRY CREEK 6-27 - P_DRY CREEK 6-27 - PLAN #1 1	1,300.00	1,299.24	65.13	61.68	18.874	SF
UPRR 42 PAN AM 'AM-TRUE #1 EXISTING - UPRR 42	1,615.96	1,614.96	1.26	-61.91	0.020	Level 1, CC, ES, SF

Offset Design		WELD_DRY CREEK PAD 7 - P_DRY CREEK 22-27 - P_DRY CREEK 22-27 - PLAN #1 10-26-09 RHS										Offset Site Error:		0.00 ft
Survey Program:		0-MWD										Offset Well Error:		0.00 ft
Reference		Offset		Semi Major Axis			Distance							
Measured Depth	Vertical Depth	Measured Depth	Vertical Depth	Reference	Offset	Highside Toolface	Offset Wellbore Centre		Between Centres	Between Ellipses	Minimum Separation	Separation Factor	Warning	
(ft)	(ft)	(ft)	(ft)	(ft)	(ft)	(°)	+N/-S (ft)	+E/-W (ft)	(ft)	(ft)	(ft)			
0.00	0.00	0.00	0.00	0.00	0.00	89.61	0.33	47.61	47.61					
100.00	100.00	100.00	100.00	0.04	0.10	89.61	0.33	47.61	47.61	47.47	0.14	339.980		
200.00	200.00	200.00	200.00	0.10	0.32	89.61	0.33	47.61	47.61	47.19	0.42	114.125		
300.00	300.00	300.00	300.00	0.15	0.55	89.61	0.33	47.61	47.61	46.91	0.69	68.571		
400.00	400.00	400.00	400.00	0.20	0.77	89.61	0.33	47.61	47.61	46.64	0.97	49.009		
500.00	500.00	500.00	500.00	0.25	0.99	89.61	0.33	47.61	47.61	46.36	1.25	38.131		
600.00	600.00	600.00	600.00	0.31	1.22	89.61	0.33	47.61	47.61	46.08	1.53	31.205		
700.00	700.00	700.00	700.00	0.36	1.44	89.61	0.33	47.61	47.61	45.81	1.80	26.408		
800.00	800.00	800.00	800.00	0.41	1.67	89.61	0.33	47.61	47.61	45.53	2.08	22.889		
900.00	900.00	900.00	900.00	0.46	1.89	89.61	0.33	47.61	47.61	45.25	2.36	20.198		
1,000.00	1,000.00	1,000.00	1,000.00	0.52	2.12	89.61	0.33	47.61	47.61	44.97	2.63	18.073		
1,100.00	1,100.00	1,100.00	1,100.00	0.57	2.34	89.61	0.33	47.61	47.61	44.70	2.91	16.353		
1,200.00	1,200.00	1,200.00	1,200.00	0.62	2.57	89.61	0.33	47.61	47.61	44.42	3.19	14.932		
1,250.00	1,250.00	1,250.00	1,250.00	0.65	2.68	89.61	0.33	47.61	47.61	44.28	3.33	14.310	CC, ES	

CC - Min centre to center distance or convergent point, SF - min separation factor, ES - min ellipse separation



<b>Company:</b>	US ROCKIES REGION PLANNING	<b>Local Co-ordinate Reference:</b>	Well P_DRY CREEK 31-27
<b>Project:</b>	KERR MCGEE OIL & GAS ONSHORE LP	<b>TVD Reference:</b>	WELL @ 5023.00ft (Original Well Elev)
<b>Reference Site:</b>	WELD_DRY CREEK PAD 7	<b>MD Reference:</b>	WELL @ 5023.00ft (Original Well Elev)
<b>Site Error:</b>	0.00ft	<b>North Reference:</b>	Grid
<b>Reference Well:</b>	P_DRY CREEK 31-27	<b>Survey Calculation Method:</b>	Minimum Curvature
<b>Well Error:</b>	0.00ft	<b>Output errors are at</b>	2.00 sigma
<b>Reference Wellbore</b>	P_DRY CREEK 31-27	<b>Database:</b>	EDM 2003.21 Single User Db
<b>Reference Design:</b>	PLAN #1 10-26-09 RHS	<b>Offset TVD Reference:</b>	Offset Datum

Offset Design WELD_DRY CREEK PAD 7 - P_DRY CREEK 22-27 - P_DRY CREEK 22-27 - PLAN #1 10-26-09 RHS												Offset Site Error:	0.00 ft
Survey Program: 0-MWD												Offset Well Error:	0.00 ft
Measured Depth (ft)	Vertical Depth (ft)	Measured Depth (ft)	Vertical Depth (ft)	Reference (ft)	Offset (ft)	Highside Toolface (°)	Offset Wellbore Centre +N/-S (ft)	+E/-W (ft)	Between Centres (ft)	Between Ellipses (ft)	Minimum Separation (ft)	Separation Factor	Warning
1,300.00	1,300.00	1,299.94	1,299.94	0.67	2.78	-171.85	-0.11	47.64	48.07	44.62	3.45	13.933 SF	
1,400.00	1,399.93	1,399.65	1,399.58	0.73	2.95	-168.55	-3.57	47.89	51.86	48.19	3.67	14.135	
1,500.00	1,499.68	1,498.85	1,498.54	0.78	3.13	-163.25	-10.45	48.38	59.85	55.96	3.89	15.369	
1,600.00	1,599.13	1,597.22	1,596.37	0.85	3.32	-157.57	-20.63	49.12	72.49	68.36	4.13	17.541	
1,700.00	1,698.15	1,694.45	1,692.67	0.94	3.54	-152.51	-33.99	50.08	89.98	85.59	4.39	20.490	
1,800.00	1,796.63	1,790.24	1,787.04	1.05	3.78	-148.39	-50.33	51.26	112.33	107.65	4.68	24.004	
1,900.00	1,894.44	1,884.31	1,879.14	1.19	4.06	-145.15	-69.43	52.63	139.40	134.39	5.00	27.864	
1,985.37	1,977.32	1,963.09	1,955.75	1.34	4.33	-142.93	-87.74	53.95	166.11	160.80	5.31	31.275	
2,000.00	1,991.47	1,976.44	1,968.68	1.36	4.37	-142.64	-91.05	54.19	170.98	165.61	5.37	31.843	
2,100.00	2,088.19	2,066.90	2,055.88	1.56	4.73	-140.66	-115.06	55.92	205.33	199.53	5.80	35.412	
2,200.00	2,184.92	2,155.83	2,140.81	1.77	5.13	-138.68	-141.32	57.81	241.55	235.29	6.26	38.565	
2,300.00	2,281.64	2,245.12	2,225.30	1.98	5.57	-136.74	-170.12	59.89	279.58	272.82	6.76	41.364	
2,400.00	2,378.37	2,337.05	2,312.12	2.20	6.06	-135.13	-200.25	62.06	318.16	310.87	7.29	43.643	
2,500.00	2,475.09	2,428.98	2,398.95	2.43	6.58	-133.87	-230.38	64.23	356.92	349.08	7.83	45.556	
2,600.00	2,571.81	2,520.91	2,485.77	2.65	7.10	-132.85	-260.51	66.40	395.79	387.40	8.39	47.169	
2,700.00	2,668.54	2,612.84	2,572.60	2.88	7.64	-132.02	-290.65	68.57	434.75	425.79	8.96	48.541	
2,800.00	2,765.26	2,704.77	2,659.42	3.11	8.19	-131.32	-320.78	70.75	473.77	464.24	9.53	49.718	
2,900.00	2,861.98	2,796.70	2,746.25	3.34	8.75	-130.73	-350.91	72.92	512.85	502.74	10.11	50.733	
3,000.00	2,958.71	2,888.63	2,833.07	3.58	9.32	-130.23	-381.04	75.09	551.96	541.27	10.69	51.616	
3,100.00	3,055.43	2,980.56	2,919.90	3.81	9.89	-129.79	-411.17	77.26	591.11	579.83	11.28	52.389	
3,200.00	3,152.15	3,072.49	3,006.72	4.04	10.47	-129.40	-441.31	79.43	630.28	618.40	11.88	53.072	
3,300.00	3,248.88	3,164.42	3,093.55	4.28	11.05	-129.06	-471.44	81.60	669.47	657.00	12.47	53.677	
3,400.00	3,345.60	3,256.35	3,180.37	4.51	11.63	-128.76	-501.57	83.77	708.69	695.62	13.07	54.217	
3,500.00	3,442.32	3,348.28	3,267.20	4.75	12.21	-128.48	-531.70	85.94	747.91	734.24	13.67	54.701	
3,600.00	3,539.05	3,440.21	3,354.02	4.98	12.80	-128.24	-561.83	88.12	787.15	772.88	14.28	55.137	
3,700.00	3,635.77	3,532.14	3,440.85	5.22	13.39	-128.02	-591.96	90.29	826.40	811.52	14.88	55.531	
3,800.00	3,732.49	3,624.07	3,527.67	5.46	13.98	-127.82	-622.10	92.46	865.66	850.17	15.49	55.889	
3,900.00	3,829.22	3,716.00	3,614.50	5.69	14.58	-127.64	-652.23	94.63	904.93	888.83	16.10	56.215	
4,000.00	3,925.94	3,807.93	3,701.32	5.93	15.17	-127.47	-682.36	96.80	944.21	927.50	16.71	56.514	
4,100.00	4,022.66	3,899.86	3,788.15	6.17	15.77	-127.31	-712.49	98.97	983.49	966.17	17.32	56.788	
4,200.00	4,119.39	3,991.79	3,874.97	6.40	16.37	-127.17	-742.62	101.14	1,022.78	1,004.84	17.93	57.039	
4,300.00	4,216.11	4,083.72	3,961.80	6.64	16.97	-127.04	-772.75	103.32	1,062.07	1,043.52	18.54	57.272	
4,400.00	4,312.84	4,175.65	4,048.62	6.88	17.57	-126.91	-802.89	105.49	1,101.36	1,082.21	19.16	57.487	
4,500.00	4,409.56	4,267.59	4,135.45	7.11	18.17	-126.80	-833.02	107.66	1,140.66	1,120.89	19.77	57.687	
4,600.00	4,506.28	4,359.52	4,222.27	7.35	18.77	-126.69	-863.15	109.83	1,179.97	1,159.58	20.39	57.872	
4,700.00	4,603.01	4,451.45	4,309.10	7.59	19.37	-126.59	-893.28	112.00	1,219.28	1,198.27	21.01	58.046	
4,800.00	4,699.73	4,543.38	4,395.92	7.83	19.97	-126.50	-923.41	114.17	1,258.59	1,236.96	21.62	58.207	
4,900.00	4,796.45	4,635.31	4,482.75	8.07	20.58	-126.41	-953.55	116.34	1,297.90	1,275.66	22.24	58.359	
5,000.00	4,893.18	4,727.24	4,569.57	8.30	21.18	-126.33	-983.68	118.51	1,337.22	1,314.36	22.86	58.501	
5,100.00	4,989.90	4,819.17	4,656.40	8.54	21.78	-126.25	-1,013.81	120.69	1,376.53	1,353.06	23.48	58.635	
5,200.00	5,086.62	4,911.10	4,743.22	8.78	22.39	-126.18	-1,043.94	122.86	1,415.85	1,391.76	24.10	58.760	
5,300.00	5,183.35	5,003.03	4,830.05	9.02	22.99	-126.11	-1,074.07	125.03	1,455.18	1,430.46	24.71	58.879	
5,400.00	5,280.07	5,094.96	4,916.87	9.26	23.60	-126.04	-1,104.20	127.20	1,494.50	1,469.16	25.33	58.991	
5,500.00	5,376.79	5,186.89	5,003.70	9.49	24.20	-125.98	-1,134.34	129.37	1,533.82	1,507.87	25.95	59.097	
5,600.00	5,473.52	5,278.82	5,090.52	9.73	24.81	-125.92	-1,164.47	131.54	1,573.15	1,546.58	26.57	59.197	
5,700.00	5,570.24	5,370.75	5,177.35	9.97	25.42	-125.86	-1,194.60	133.71	1,612.48	1,585.28	27.20	59.292	
5,742.84	5,611.68	5,410.13	5,214.54	10.07	25.68	-125.84	-1,207.51	134.64	1,629.33	1,601.87	27.46	59.331	
5,800.00	5,667.11	5,462.80	5,264.29	10.20	26.02	-126.18	-1,224.77	135.89	1,651.50	1,623.56	27.94	59.106	
5,900.00	5,764.71	5,555.48	5,351.81	10.41	26.63	-126.66	-1,255.15	138.08	1,688.80	1,660.05	28.75	58.743	
6,000.00	5,863.01	5,710.27	5,499.04	10.58	27.39	-126.90	-1,302.78	141.51	1,722.82	1,693.20	29.63	58.150	
6,100.00	5,961.89	5,885.64	5,668.65	10.73	28.08	-127.05	-1,347.13	144.70	1,750.69	1,720.26	30.43	57.525	
6,200.00	6,061.22	6,066.60	5,846.18	10.84	28.66	-127.18	-1,381.96	147.21	1,772.03	1,740.90	31.13	56.920	

CC - Min centre to center distance or convergent point, SF - min separation factor, ES - min ellipse separation

<b>Company:</b>	US ROCKIES REGION PLANNING	<b>Local Co-ordinate Reference:</b>	Well P_DRY CREEK 31-27
<b>Project:</b>	KERR MCGEE OIL & GAS ONSHORE LP	<b>TVD Reference:</b>	WELL @ 5023.00ft (Original Well Elev)
<b>Reference Site:</b>	WELD_DRY CREEK PAD 7	<b>MD Reference:</b>	WELL @ 5023.00ft (Original Well Elev)
<b>Site Error:</b>	0.00ft	<b>North Reference:</b>	Grid
<b>Reference Well:</b>	P_DRY CREEK 31-27	<b>Survey Calculation Method:</b>	Minimum Curvature
<b>Well Error:</b>	0.00ft	<b>Output errors are at</b>	2.00 sigma
<b>Reference Wellbore</b>	P_DRY CREEK 31-27	<b>Database:</b>	EDM 2003.21 Single User Db
<b>Reference Design:</b>	PLAN #1 10-26-09 RHS	<b>Offset TVD Reference:</b>	Offset Datum

Offset Design WELD_DRY CREEK PAD 7 - P_DRY CREEK 22-27 - P_DRY CREEK 22-27 - PLAN #1 10-26-09 RHS												Offset Site Error:	0.00 ft
Survey Program: 0-MWD												Offset Well Error:	0.00 ft
Reference	Offset	Semi Major Axis		Distance									
Measured Depth (ft)	Vertical Depth (ft)	Measured Depth (ft)	Vertical Depth (ft)	Reference (ft)	Offset (ft)	Highside Toolface (°)	Offset Wellbore Centre +N/-S (ft)	+E/-W (ft)	Between Centres (ft)	Between Ellipses (ft)	Minimum Separation (ft)	Separation Factor	Warning
6,300.00	6,160.90	6,251.78	6,029.76	10.92	29.12	-127.27	-1,405.95	148.94	1,786.59	1,754.89	31.71	56.350	
6,400.00	6,260.80	6,439.60	6,217.14	10.98	29.43	-127.35	-1,418.15	149.82	1,794.20	1,762.06	32.14	55.828	
6,478.21	6,339.00	6,561.47	6,339.00	11.00	29.56	134.52	-1,419.65	149.93	1,795.44	1,763.09	32.36	55.489	
6,500.00	6,360.79	6,583.26	6,360.79	11.00	29.58	134.52	-1,419.65	149.93	1,795.44	1,763.06	32.39	55.438	
6,600.00	6,460.79	6,683.26	6,460.79	11.02	29.66	134.52	-1,419.65	149.93	1,795.44	1,762.93	32.52	55.217	
6,700.00	6,560.79	6,783.26	6,560.79	11.03	29.75	134.52	-1,419.65	149.93	1,795.44	1,762.80	32.65	54.998	
6,800.00	6,660.79	6,883.26	6,660.79	11.05	29.84	134.52	-1,419.65	149.93	1,795.44	1,762.66	32.78	54.777	
6,900.00	6,760.79	6,983.26	6,760.79	11.07	29.92	134.52	-1,419.65	149.93	1,795.44	1,762.53	32.91	54.554	
7,000.00	6,860.79	7,083.26	6,860.79	11.09	30.01	134.52	-1,419.65	149.93	1,795.44	1,762.40	33.05	54.331	
7,100.00	6,960.79	7,183.26	6,960.79	11.10	30.10	134.52	-1,419.65	149.93	1,795.44	1,762.26	33.18	54.106	
7,200.00	7,060.79	7,283.26	7,060.79	11.12	30.20	134.52	-1,419.65	149.93	1,795.44	1,762.12	33.32	53.881	
7,300.00	7,160.79	7,383.26	7,160.79	11.14	30.29	134.52	-1,419.65	149.93	1,795.44	1,761.98	33.46	53.654	
7,400.00	7,260.79	7,483.26	7,260.79	11.16	30.39	134.52	-1,419.65	149.93	1,795.44	1,761.84	33.61	53.427	
7,500.00	7,360.79	7,583.26	7,360.79	11.17	30.48	134.52	-1,419.65	149.93	1,795.44	1,761.69	33.75	53.198	
7,600.00	7,460.79	7,683.26	7,460.79	11.19	30.58	134.52	-1,419.65	149.93	1,795.44	1,761.55	33.90	52.969	
7,700.00	7,560.79	7,783.26	7,560.79	11.21	30.68	134.52	-1,419.65	149.93	1,795.44	1,761.40	34.04	52.740	
7,800.00	7,660.79	7,883.26	7,660.79	11.23	30.78	134.52	-1,419.65	149.93	1,795.44	1,761.25	34.19	52.510	
7,900.00	7,760.79	7,983.26	7,760.79	11.25	30.88	134.52	-1,419.65	149.93	1,795.44	1,761.10	34.34	52.279	
8,000.00	7,860.79	8,083.26	7,860.79	11.27	30.99	134.52	-1,419.65	149.93	1,795.44	1,760.95	34.50	52.048	
8,100.00	7,960.79	8,183.26	7,960.79	11.29	31.09	134.52	-1,419.65	149.93	1,795.44	1,760.79	34.65	51.817	
8,200.00	8,060.79	8,283.26	8,060.79	11.31	31.20	134.52	-1,419.65	149.93	1,795.44	1,760.64	34.81	51.585	
8,300.00	8,160.79	8,383.26	8,160.79	11.33	31.31	134.52	-1,419.65	149.93	1,795.44	1,760.48	34.96	51.353	
8,353.19	8,213.98	8,436.45	8,213.98	11.34	31.36	134.52	-1,419.65	149.93	1,795.44	1,760.40	35.05	51.230	
8,400.00	8,260.79	8,454.47	8,232.00	11.35	31.38	134.52	-1,419.65	149.93	1,795.67	1,760.59	35.08	51.185	
8,450.21	8,311.00	8,454.47	8,232.00	11.36	31.38	134.52	-1,419.65	149.93	1,797.18	1,762.09	35.09	51.210	

<b>Company:</b>	US ROCKIES REGION PLANNING	<b>Local Co-ordinate Reference:</b>	Well P_DRY CREEK 31-27
<b>Project:</b>	KERR MCGEE OIL & GAS ONSHORE LP	<b>TVD Reference:</b>	WELL @ 5023.00ft (Original Well Elev)
<b>Reference Site:</b>	WELD_DRY CREEK PAD 7	<b>MD Reference:</b>	WELL @ 5023.00ft (Original Well Elev)
<b>Site Error:</b>	0.00ft	<b>North Reference:</b>	Grid
<b>Reference Well:</b>	P_DRY CREEK 31-27	<b>Survey Calculation Method:</b>	Minimum Curvature
<b>Well Error:</b>	0.00ft	<b>Output errors are at</b>	2.00 sigma
<b>Reference Wellbore</b>	P_DRY CREEK 31-27	<b>Database:</b>	EDM 2003.21 Single User Db
<b>Reference Design:</b>	PLAN #1 10-26-09 RHS	<b>Offset TVD Reference:</b>	Offset Datum

Offset Design												Offset Site Error:	0.00 ft
Survey Program: 0-MWMD												Offset Well Error:	0.00 ft
Reference		Offset		Semi Major Axis			Distance						
Measured Depth (ft)	Vertical Depth (ft)	Measured Depth (ft)	Vertical Depth (ft)	Reference (ft)	Offset (ft)	Highside Toolface (°)	Offset Wellbore Centre +N/-S (ft)	+E/-W (ft)	Between Centres (ft)	Between Ellipses (ft)	Minimum Separation (ft)	Separation Factor	Warning
0.00	0.00	0.00	0.00	0.00	0.00	89.60	0.66	95.21	95.22				
100.00	100.00	100.00	100.00	0.04	0.10	89.60	0.66	95.21	95.22	95.08	0.14	679.960	
200.00	200.00	200.00	200.00	0.10	0.32	89.60	0.66	95.21	95.22	94.80	0.42	228.249	
300.00	300.00	300.00	300.00	0.15	0.55	89.60	0.66	95.21	95.22	94.52	0.69	137.143	
400.00	400.00	400.00	400.00	0.20	0.77	89.60	0.66	95.21	95.22	94.24	0.97	98.018	
500.00	500.00	500.00	500.00	0.25	0.99	89.60	0.66	95.21	95.22	93.97	1.25	76.262	
600.00	600.00	600.00	600.00	0.31	1.22	89.60	0.66	95.21	95.22	93.69	1.53	62.410	
700.00	700.00	700.00	700.00	0.36	1.44	89.60	0.66	95.21	95.22	93.41	1.80	52.816	
800.00	800.00	800.00	800.00	0.41	1.67	89.60	0.66	95.21	95.22	93.14	2.08	45.779	
900.00	900.00	900.00	900.00	0.46	1.89	89.60	0.66	95.21	95.22	92.86	2.36	40.396	
1,000.00	1,000.00	1,000.00	1,000.00	0.52	2.12	89.60	0.66	95.21	95.22	92.58	2.63	36.147	
1,100.00	1,100.00	1,100.00	1,100.00	0.57	2.34	89.60	0.66	95.21	95.22	92.30	2.91	32.706	
1,200.00	1,200.00	1,200.00	1,200.00	0.62	2.57	89.60	0.66	95.21	95.22	92.03	3.19	29.863	
1,250.00	1,250.00	1,250.00	1,250.00	0.65	2.68	89.60	0.66	95.21	95.22	91.89	3.33	28.619 CC, ES	
1,300.00	1,300.00	1,298.84	1,298.84	0.67	2.78	-172.16	0.37	95.51	95.95	92.50	3.45	27.809	
1,400.00	1,399.93	1,396.24	1,396.18	0.73	2.95	-171.08	-1.96	97.87	101.84	98.16	3.67	27.720 SF	
1,500.00	1,499.68	1,492.82	1,492.53	0.78	3.14	-169.27	-6.56	102.54	113.67	109.77	3.90	29.156	
1,600.00	1,599.13	1,588.04	1,587.25	0.85	3.34	-167.15	-13.32	109.40	131.48	127.36	4.13	31.867	
1,700.00	1,698.15	1,681.40	1,679.77	0.94	3.55	-165.07	-22.10	118.30	155.26	150.91	4.36	35.629	
1,800.00	1,796.63	1,772.46	1,769.57	1.05	3.79	-163.20	-32.69	129.04	184.90	180.30	4.60	40.235	
1,900.00	1,894.44	1,860.80	1,856.18	1.19	4.05	-161.58	-44.88	141.40	220.21	215.37	4.84	45.494	
1,985.37	1,977.32	1,933.81	1,927.33	1.34	4.30	-160.38	-56.36	153.05	254.69	249.63	5.06	50.377	
2,000.00	1,991.47	1,946.09	1,939.26	1.36	4.35	-160.23	-58.42	155.14	260.95	255.85	5.10	51.177	
2,100.00	2,088.19	2,028.87	2,019.31	1.56	4.67	-159.24	-73.22	170.14	305.07	299.66	5.40	56.485	
2,200.00	2,184.92	2,109.52	2,096.68	1.77	5.02	-158.27	-89.19	186.34	351.40	345.69	5.72	61.487	
2,300.00	2,281.64	2,187.99	2,171.32	1.98	5.40	-157.34	-106.19	203.58	399.90	393.86	6.04	66.172	
2,400.00	2,378.37	2,264.26	2,243.20	2.20	5.82	-156.46	-124.09	221.73	450.50	444.12	6.38	70.571	
2,500.00	2,475.09	2,338.31	2,312.32	2.43	6.27	-155.63	-142.74	240.65	503.13	496.40	6.73	74.759	
2,600.00	2,571.81	2,410.15	2,378.70	2.65	6.74	-154.85	-162.03	260.21	557.73	550.65	7.08	78.775	
2,700.00	2,668.54	2,479.79	2,442.36	2.88	7.23	-154.12	-181.84	280.30	614.22	606.78	7.44	82.572	
2,800.00	2,765.26	2,547.24	2,503.36	3.11	7.75	-153.44	-202.06	300.80	672.52	664.72	7.80	86.213	
2,900.00	2,861.98	2,612.55	2,561.75	3.34	8.28	-152.79	-222.59	321.62	732.56	724.40	8.16	89.770	
3,000.00	2,958.71	2,675.74	2,617.61	3.58	8.83	-152.19	-243.33	342.66	794.27	785.75	8.52	93.174	
3,100.00	3,055.43	2,743.07	2,676.46	3.81	9.43	-151.58	-266.30	365.95	857.47	848.57	8.91	96.250	
3,200.00	3,152.15	2,819.92	2,743.49	4.04	10.15	-150.96	-292.68	392.71	921.03	911.69	9.33	98.675	
3,300.00	3,248.88	2,896.76	2,810.52	4.28	10.88	-150.42	-319.07	419.47	984.64	974.88	9.76	100.861	
3,400.00	3,345.60	2,973.60	2,877.55	4.51	11.61	-149.94	-345.46	446.23	1,048.30	1,038.10	10.20	102.806	
3,500.00	3,442.32	3,050.45	2,944.58	4.75	12.35	-149.52	-371.84	472.99	1,111.99	1,101.36	10.63	104.577	
3,600.00	3,539.05	3,127.29	3,011.60	4.98	13.10	-149.14	-398.23	499.75	1,175.72	1,164.65	11.07	106.191	
3,700.00	3,635.77	3,204.14	3,078.63	5.22	13.86	-148.80	-424.61	526.50	1,239.48	1,227.96	11.51	107.665	
3,800.00	3,732.49	3,280.98	3,145.66	5.46	14.61	-148.50	-451.00	553.26	1,303.26	1,291.30	11.96	108.999	
3,900.00	3,829.22	3,357.82	3,212.69	5.69	15.38	-148.22	-477.38	580.02	1,367.05	1,354.65	12.40	110.224	
4,000.00	3,925.94	3,434.67	3,279.72	5.93	16.14	-147.97	-503.77	606.78	1,430.87	1,418.02	12.85	111.354	
4,100.00	4,022.66	3,511.51	3,346.75	6.17	16.91	-147.74	-530.15	633.54	1,494.70	1,481.40	13.30	112.397	
4,200.00	4,119.39	3,588.36	3,413.77	6.40	17.68	-147.53	-556.54	660.30	1,558.54	1,544.80	13.75	113.358	
4,300.00	4,216.11	3,665.20	3,480.80	6.64	18.45	-147.33	-582.92	687.06	1,622.40	1,608.20	14.20	114.246	
4,400.00	4,312.84	3,742.04	3,547.83	6.88	19.22	-147.15	-609.31	713.82	1,686.27	1,671.61	14.65	115.073	
4,500.00	4,409.56	3,818.89	3,614.86	7.11	20.00	-146.98	-635.69	740.57	1,750.14	1,735.03	15.11	115.844	
4,600.00	4,506.28	3,895.73	3,681.89	7.35	20.77	-146.83	-662.08	767.33	1,814.03	1,798.46	15.56	116.563	
4,700.00	4,603.01	3,972.58	3,748.92	7.59	21.55	-146.68	-688.46	794.09	1,877.92	1,861.90	16.02	117.231	
4,800.00	4,699.73	4,049.42	3,815.94	7.83	22.33	-146.55	-714.85	820.85	1,941.81	1,925.34	16.48	117.858	
4,900.00	4,796.45	4,126.26	3,882.97	8.07	23.11	-146.42	-741.24	847.61	2,005.72	1,988.78	16.93	118.447	

CC - Min centre to center distance or convergent point, SF - min separation factor, ES - min ellipse separation

<b>Company:</b>	US ROCKIES REGION PLANNING	<b>Local Co-ordinate Reference:</b>	Well P_DRY CREEK 31-27
<b>Project:</b>	KERR MCGEE OIL & GAS ONSHORE LP	<b>TVD Reference:</b>	WELL @ 5023.00ft (Original Well Elev)
<b>Reference Site:</b>	WELD_DRY CREEK PAD 7	<b>MD Reference:</b>	WELL @ 5023.00ft (Original Well Elev)
<b>Site Error:</b>	0.00ft	<b>North Reference:</b>	Grid
<b>Reference Well:</b>	P_DRY CREEK 31-27	<b>Survey Calculation Method:</b>	Minimum Curvature
<b>Well Error:</b>	0.00ft	<b>Output errors are at</b>	2.00 sigma
<b>Reference Wellbore</b>	P_DRY CREEK 31-27	<b>Database:</b>	EDM 2003.21 Single User Db
<b>Reference Design:</b>	PLAN #1 10-26-09 RHS	<b>Offset TVD Reference:</b>	Offset Datum

Offset Design WELD_DRY CREEK PAD 7 - P_DRY CREEK 25-27 - P_DRY CREEK 25-27 - PLAN #1 10-26-09 RHS												Offset Site Error:	0.00 ft
Survey Program: 0-MWD												Offset Well Error:	0.00 ft
Reference		Offset		Semi Major Axis			Distance						
Measured Depth (ft)	Vertical Depth (ft)	Measured Depth (ft)	Vertical Depth (ft)	Reference (ft)	Offset (ft)	Highside Toolface (°)	Offset Wellbore Centre +N/-S (ft)	+E/-W (ft)	Between Centres (ft)	Between Ellipses (ft)	Minimum Separation (ft)	Separation Factor	Warning
5,000.00	4,893.18	4,203.11	3,950.00	8.30	23.89	-146.30	-767.62	874.37	2,069.63	2,052.24	17.39	119.001	
5,100.00	4,989.90	4,279.95	4,017.03	8.54	24.67	-146.19	-794.01	901.13	2,133.54	2,115.69	17.85	119.520	
5,200.00	5,086.62	4,356.79	4,084.06	8.78	25.45	-146.08	-820.39	927.88	2,197.46	2,179.15	18.31	120.010	
5,300.00	5,183.35	4,433.64	4,151.08	9.02	26.24	-145.98	-846.78	954.64	2,261.38	2,242.61	18.77	120.473	
5,400.00	5,280.07	4,510.48	4,218.11	9.26	27.02	-145.89	-873.16	981.40	2,325.31	2,306.08	19.23	120.911	
5,500.00	5,376.79	4,587.33	4,285.14	9.49	27.80	-145.80	-899.55	1,008.16	2,389.24	2,369.55	19.69	121.325	
5,600.00	5,473.52	4,664.17	4,352.17	9.73	28.59	-145.72	-925.93	1,034.92	2,453.17	2,433.02	20.15	121.717	
5,700.00	5,570.24	4,741.01	4,419.20	9.97	29.37	-145.64	-952.32	1,061.68	2,517.11	2,496.49	20.62	122.089	
5,742.84	5,611.68	4,773.94	4,447.91	10.07	29.71	-145.60	-963.62	1,073.14	2,544.50	2,523.69	20.82	122.243	
5,800.00	5,667.11	4,818.15	4,486.48	10.20	30.16	-146.08	-978.80	1,088.54	2,580.68	2,559.38	21.31	121.124	
5,900.00	5,764.71	4,896.83	4,555.11	10.41	30.97	-146.81	-1,005.82	1,115.94	2,642.21	2,620.06	22.15	119.284	
6,000.00	5,863.01	4,977.14	4,625.16	10.58	31.79	-147.43	-1,033.40	1,143.90	2,701.42	2,678.45	22.97	117.595	
6,100.00	5,961.89	5,058.98	4,696.55	10.73	32.63	-147.96	-1,061.50	1,172.40	2,758.26	2,734.49	23.77	116.058	
6,200.00	6,061.22	5,142.24	4,769.17	10.84	33.48	-148.39	-1,090.08	1,201.39	2,812.67	2,788.14	24.53	114.672	
6,300.00	6,160.90	5,226.83	4,842.95	10.92	34.35	-148.74	-1,119.13	1,230.85	2,864.60	2,839.35	25.25	113.432	
6,400.00	6,260.80	5,312.64	4,917.80	10.98	35.23	-149.02	-1,148.59	1,260.73	2,914.03	2,888.09	25.94	112.335	
6,478.21	6,339.00	6,797.04	6,339.00	11.00	41.73	115.15	-1,406.40	1,522.18	2,930.37	2,900.77	29.60	98.988	
6,500.00	6,360.79	6,818.82	6,360.79	11.00	41.74	115.15	-1,406.40	1,522.18	2,930.37	2,900.74	29.63	98.887	
6,600.00	6,460.79	6,918.82	6,460.79	11.02	41.81	115.15	-1,406.40	1,522.18	2,930.37	2,900.60	29.77	98.426	
6,700.00	6,560.79	7,018.82	6,560.79	11.03	41.88	115.15	-1,406.40	1,522.18	2,930.37	2,900.46	29.91	97.963	
6,800.00	6,660.79	7,118.82	6,660.79	11.05	41.94	115.15	-1,406.40	1,522.18	2,930.37	2,900.31	30.06	97.498	
6,900.00	6,760.79	7,218.82	6,760.79	11.07	42.01	115.15	-1,406.40	1,522.18	2,930.37	2,900.17	30.20	97.032	
7,000.00	6,860.79	7,318.82	6,860.79	11.09	42.09	115.15	-1,406.40	1,522.18	2,930.37	2,900.02	30.35	96.564	
7,100.00	6,960.79	7,418.82	6,960.79	11.10	42.16	115.15	-1,406.40	1,522.18	2,930.37	2,899.88	30.49	96.095	
7,200.00	7,060.79	7,518.82	7,060.79	11.12	42.23	115.15	-1,406.40	1,522.18	2,930.37	2,899.73	30.64	95.624	
7,300.00	7,160.79	7,618.82	7,160.79	11.14	42.30	115.15	-1,406.40	1,522.18	2,930.37	2,899.57	30.80	95.153	
7,400.00	7,260.79	7,718.82	7,260.79	11.16	42.38	115.15	-1,406.40	1,522.18	2,930.37	2,899.42	30.95	94.681	
7,500.00	7,360.79	7,818.82	7,360.79	11.17	42.46	115.15	-1,406.40	1,522.18	2,930.37	2,899.27	31.11	94.208	
7,600.00	7,460.79	7,918.82	7,460.79	11.19	42.53	115.15	-1,406.40	1,522.18	2,930.37	2,899.11	31.26	93.735	
7,700.00	7,560.79	8,018.82	7,560.79	11.21	42.61	115.15	-1,406.40	1,522.18	2,930.37	2,898.95	31.42	93.262	
7,800.00	7,660.79	8,118.82	7,660.79	11.23	42.69	115.15	-1,406.40	1,522.18	2,930.37	2,898.79	31.58	92.788	
7,900.00	7,760.79	8,218.82	7,760.79	11.25	42.77	115.15	-1,406.40	1,522.18	2,930.37	2,898.63	31.74	92.315	
8,000.00	7,860.79	8,318.82	7,860.79	11.27	42.85	115.15	-1,406.40	1,522.18	2,930.37	2,898.46	31.91	91.842	
8,100.00	7,960.79	8,418.82	7,960.79	11.29	42.93	115.15	-1,406.40	1,522.18	2,930.37	2,898.30	32.07	91.369	
8,200.00	8,060.79	8,518.82	8,060.79	11.31	43.02	115.15	-1,406.40	1,522.18	2,930.37	2,898.13	32.24	90.897	
8,300.00	8,160.79	8,618.82	8,160.79	11.33	43.10	115.15	-1,406.40	1,522.18	2,930.37	2,897.96	32.41	90.425	
8,400.00	8,260.79	8,718.82	8,260.79	11.35	43.19	115.15	-1,406.40	1,522.18	2,930.37	2,897.79	32.58	89.954	
8,424.12	8,284.91	8,742.95	8,284.91	11.35	43.21	115.15	-1,406.40	1,522.18	2,930.37	2,897.75	32.62	89.840	
8,450.21	8,311.00	8,751.04	8,293.00	11.36	43.22	115.15	-1,406.40	1,522.18	2,930.43	2,897.79	32.64	89.790	

<b>Company:</b>	US ROCKIES REGION PLANNING	<b>Local Co-ordinate Reference:</b>	Well P_DRY CREEK 31-27
<b>Project:</b>	KERR MCGEE OIL & GAS ONSHORE LP	<b>TVD Reference:</b>	WELL @ 5023.00ft (Original Well Elev)
<b>Reference Site:</b>	WELD_DRY CREEK PAD 7	<b>MD Reference:</b>	WELL @ 5023.00ft (Original Well Elev)
<b>Site Error:</b>	0.00ft	<b>North Reference:</b>	Grid
<b>Reference Well:</b>	P_DRY CREEK 31-27	<b>Survey Calculation Method:</b>	Minimum Curvature
<b>Well Error:</b>	0.00ft	<b>Output errors are at</b>	2.00 sigma
<b>Reference Wellbore</b>	P_DRY CREEK 31-27	<b>Database:</b>	EDM 2003.21 Single User Db
<b>Reference Design:</b>	PLAN #1 10-26-09 RHS	<b>Offset TVD Reference:</b>	Offset Datum

Offset Design WELD_DRY CREEK PAD 7 - P_DRY CREEK 3-27 - P_DRY CREEK 3-27 - PLAN #1 10-26-09 RHS												Offset Site Error:	0.00 ft
Survey Program: 0-MWD												Offset Well Error:	0.00 ft
Reference	Offset	Semi Major Axis		Distance		Warning							
Measured Depth (ft)	Vertical Depth (ft)	Measured Depth (ft)	Vertical Depth (ft)	Reference (ft)	Offset (ft)	Highside Toolface (°)	Offset Wellbore Centre +N/-S (ft)	+E/-W (ft)	Between Centres (ft)	Between Ellipses (ft)	Minimum Separation (ft)	Separation Factor	
0.00	0.00	0.00	0.00	0.00	0.00	89.59	0.56	78.41	78.41				
100.00	100.00	100.00	100.00	0.04	0.10	89.59	0.56	78.41	78.41	78.27	0.14	559.967	
200.00	200.00	200.00	200.00	0.10	0.32	89.59	0.56	78.41	78.41	78.00	0.42	187.970	
300.00	300.00	300.00	300.00	0.15	0.55	89.59	0.56	78.41	78.41	77.72	0.69	112.941	
400.00	400.00	400.00	400.00	0.20	0.77	89.59	0.56	78.41	78.41	77.44	0.97	80.721	
500.00	500.00	500.00	500.00	0.25	0.99	89.59	0.56	78.41	78.41	77.16	1.25	62.804	
600.00	600.00	600.00	600.00	0.31	1.22	89.59	0.56	78.41	78.41	76.89	1.53	51.396	
700.00	700.00	700.00	700.00	0.36	1.44	89.59	0.56	78.41	78.41	76.61	1.80	43.495	
800.00	800.00	800.00	800.00	0.41	1.67	89.59	0.56	78.41	78.41	76.33	2.08	37.700	
900.00	900.00	900.00	900.00	0.46	1.89	89.59	0.56	78.41	78.41	76.06	2.36	33.268	
1,000.00	1,000.00	1,000.00	1,000.00	0.52	2.12	89.59	0.56	78.41	78.41	75.78	2.63	29.768	
1,100.00	1,100.00	1,100.00	1,100.00	0.57	2.34	89.59	0.56	78.41	78.41	75.50	2.91	26.934	
1,200.00	1,200.00	1,200.00	1,200.00	0.62	2.57	89.59	0.56	78.41	78.41	75.22	3.19	24.593	
1,250.00	1,250.00	1,250.00	1,250.00	0.65	2.68	89.59	0.56	78.41	78.41	75.09	3.33	23.569 CC, ES	
1,300.00	1,300.00	1,298.90	1,298.89	0.67	2.79	-172.52	0.80	78.75	79.19	75.73	3.46	22.891 SF	
1,400.00	1,399.93	1,396.36	1,396.30	0.73	3.00	-174.10	2.75	81.44	85.47	81.75	3.72	23.002	
1,500.00	1,499.68	1,492.85	1,492.56	0.78	3.21	-176.62	6.58	86.75	98.14	94.17	3.97	24.740	
1,600.00	1,599.13	1,587.75	1,586.97	0.85	3.43	-179.38	12.20	94.53	117.30	113.09	4.21	27.850	
1,700.00	1,698.15	1,680.48	1,678.86	0.94	3.66	178.10	19.46	104.59	142.93	138.48	4.45	32.113	
1,800.00	1,796.63	1,770.52	1,767.66	1.05	3.91	175.99	28.16	116.65	174.88	170.20	4.68	37.338	
1,900.00	1,894.44	1,857.42	1,852.88	1.19	4.17	174.28	38.11	130.43	212.91	208.00	4.91	43.362	
1,985.37	1,977.32	1,928.83	1,922.49	1.34	4.41	173.08	47.42	143.32	249.99	244.89	5.10	49.034	
2,000.00	1,991.47	1,940.81	1,934.13	1.36	4.45	172.92	49.08	145.61	256.72	251.58	5.14	49.980	
2,100.00	2,088.19	2,021.33	2,012.04	1.56	4.76	171.88	60.97	162.09	304.13	298.73	5.40	56.343	
2,200.00	2,184.92	2,100.00	2,087.58	1.77	5.09	170.99	73.83	179.90	353.88	348.22	5.66	62.498	
2,300.00	2,281.64	2,175.22	2,159.22	1.98	5.45	170.22	87.25	198.50	405.89	399.96	5.93	68.441	
2,400.00	2,378.37	2,255.53	2,235.17	2.20	5.86	169.50	102.53	219.66	459.66	453.44	6.22	73.943	
2,500.00	2,475.09	2,339.61	2,314.63	2.43	6.31	168.89	118.61	241.93	513.62	507.10	6.52	78.801	
2,600.00	2,571.81	2,423.69	2,394.10	2.65	6.78	168.39	134.68	264.19	567.61	560.79	6.83	83.164	
2,700.00	2,668.54	2,507.76	2,473.57	2.88	7.26	167.98	150.76	286.46	621.63	614.50	7.14	87.091	
2,800.00	2,765.26	2,591.84	2,553.04	3.11	7.75	167.64	166.83	308.72	675.67	668.22	7.46	90.625	
2,900.00	2,861.98	2,675.92	2,632.50	3.34	8.25	167.35	182.91	330.99	729.72	721.95	7.78	93.817	
3,000.00	2,958.71	2,760.00	2,711.97	3.58	8.76	167.10	198.98	353.25	783.79	775.69	8.10	96.719	
3,100.00	3,055.43	2,844.08	2,791.44	3.81	9.27	166.88	215.05	375.52	837.86	829.43	8.43	99.364	
3,200.00	3,152.15	2,928.16	2,870.91	4.04	9.79	166.68	231.13	397.79	891.94	883.18	8.76	101.781	
3,300.00	3,248.88	3,012.24	2,950.37	4.28	10.31	166.51	247.20	420.05	946.03	936.93	9.10	103.995	
3,400.00	3,345.60	3,096.31	3,029.84	4.51	10.84	166.36	263.28	442.32	1,000.12	990.69	9.43	106.028	
3,500.00	3,442.32	3,180.39	3,109.31	4.75	11.37	166.22	279.35	464.58	1,054.22	1,044.45	9.77	107.894	
3,600.00	3,539.05	3,264.47	3,188.78	4.98	11.90	166.10	295.43	486.85	1,108.32	1,098.21	10.11	109.618	
3,700.00	3,635.77	3,348.55	3,268.24	5.22	12.44	165.99	311.50	509.11	1,162.43	1,151.97	10.45	111.215	
3,800.00	3,732.49	3,432.63	3,347.71	5.46	12.98	165.89	327.58	531.38	1,216.53	1,205.74	10.79	112.697	
3,900.00	3,829.22	3,516.71	3,427.18	5.69	13.51	165.79	343.65	553.65	1,270.64	1,259.51	11.14	114.075	
4,000.00	3,925.94	3,600.79	3,506.65	5.93	14.05	165.71	359.73	575.91	1,324.76	1,313.27	11.48	115.359	
4,100.00	4,022.66	3,684.87	3,586.11	6.17	14.60	165.63	375.80	598.18	1,378.87	1,367.04	11.83	116.554	
4,200.00	4,119.39	3,768.94	3,665.58	6.40	15.14	165.56	391.87	620.44	1,432.99	1,420.81	12.18	117.673	
4,300.00	4,216.11	3,853.02	3,745.05	6.64	15.68	165.49	407.95	642.71	1,487.10	1,474.58	12.53	118.721	
4,400.00	4,312.84	3,939.66	3,826.93	6.88	16.24	165.42	424.51	665.65	1,541.22	1,528.34	12.88	119.649	
4,500.00	4,409.56	4,122.49	4,001.62	7.11	17.14	165.36	456.04	709.32	1,592.59	1,579.15	13.44	118.456	
4,600.00	4,506.28	4,318.85	4,192.64	7.35	17.92	165.43	482.56	746.06	1,638.36	1,624.35	14.01	116.978	
4,700.00	4,603.01	4,528.25	4,399.25	7.59	18.57	165.62	502.34	773.46	1,677.91	1,663.35	14.56	115.258	
4,800.00	4,699.73	4,749.58	4,619.68	7.83	19.03	165.95	513.59	789.03	1,710.67	1,695.59	15.08	113.413	
4,900.00	4,796.45	4,926.40	4,796.45	8.07	19.27	166.29	515.54	791.74	1,736.74	1,721.24	15.49	112.088	

CC - Min centre to center distance or convergent point, SF - min separation factor, ES - min ellipse separation

<b>Company:</b>	US ROCKIES REGION PLANNING	<b>Local Co-ordinate Reference:</b>	Well P_DRY CREEK 31-27
<b>Project:</b>	KERR MCGEE OIL & GAS ONSHORE LP	<b>TVD Reference:</b>	WELL @ 5023.00ft (Original Well Elev)
<b>Reference Site:</b>	WELD_DRY CREEK PAD 7	<b>MD Reference:</b>	WELL @ 5023.00ft (Original Well Elev)
<b>Site Error:</b>	0.00ft	<b>North Reference:</b>	Grid
<b>Reference Well:</b>	P_DRY CREEK 31-27	<b>Survey Calculation Method:</b>	Minimum Curvature
<b>Well Error:</b>	0.00ft	<b>Output errors are at</b>	2.00 sigma
<b>Reference Wellbore</b>	P_DRY CREEK 31-27	<b>Database:</b>	EDM 2003.21 Single User Db
<b>Reference Design:</b>	PLAN #1 10-26-09 RHS	<b>Offset TVD Reference:</b>	Offset Datum

Offset Design WELD_DRY CREEK PAD 7 - P_DRY CREEK 3-27 - P_DRY CREEK 3-27 - PLAN #1 10-26-09 RHS												Offset Site Error:	0.00 ft
Survey Program: 0-MWD												Offset Well Error:	0.00 ft
Reference	Offset	Semi Major Axis		Distance		Warning							
Measured Depth (ft)	Vertical Depth (ft)	Measured Depth (ft)	Vertical Depth (ft)	Reference (ft)	Offset (ft)	Highside Toolface (°)	Offset Wellbore Centre +N/-S (ft)	+E/-W (ft)	Between Centres (ft)	Between Ellipses (ft)	Minimum Separation (ft)	Separation Factor	
5,000.00	4,893.18	5,023.12	4,893.18	8.30	19.38	166.49	515.54	791.74	1,761.46	1,745.68	15.78	111.627	
5,100.00	4,989.90	5,119.85	4,989.90	8.54	19.49	166.68	515.54	791.74	1,786.19	1,770.13	16.07	111.180	
5,200.00	5,086.62	5,216.57	5,086.62	8.78	19.61	166.86	515.54	791.74	1,810.95	1,794.60	16.35	110.746	
5,300.00	5,183.35	5,313.29	5,183.35	9.02	19.73	167.04	515.54	791.74	1,835.72	1,819.09	16.64	110.324	
5,400.00	5,280.07	5,410.02	5,280.07	9.26	19.85	167.21	515.54	791.74	1,860.51	1,843.59	16.93	109.914	
5,500.00	5,376.79	5,506.74	5,376.79	9.49	19.97	167.39	515.54	791.74	1,885.32	1,868.11	17.22	109.516	
5,600.00	5,473.52	5,603.46	5,473.52	9.73	20.09	167.55	515.54	791.74	1,910.14	1,892.64	17.50	109.128	
5,700.00	5,570.24	5,700.19	5,570.24	9.97	20.22	167.71	515.54	791.74	1,934.98	1,917.18	17.79	108.751	
5,742.84	5,611.68	5,741.63	5,611.68	10.07	20.27	167.78	515.54	791.74	1,945.62	1,927.70	17.92	108.591	
5,800.00	5,667.11	5,797.05	5,667.11	10.20	20.35	167.93	515.54	791.74	1,959.29	1,941.10	18.19	107.717	
5,900.00	5,764.71	5,894.65	5,764.71	10.41	20.48	168.15	515.54	791.74	1,980.59	1,961.94	18.65	106.225	
6,000.00	5,863.01	5,992.95	5,863.01	10.58	20.61	168.33	515.54	791.74	1,998.55	1,979.47	19.07	104.777	
6,100.00	5,961.89	6,091.83	5,961.89	10.73	20.74	168.47	515.54	791.74	2,013.14	1,993.67	19.48	103.367	
6,200.00	6,061.22	6,191.17	6,061.22	10.84	20.88	168.58	515.54	791.74	2,024.35	2,004.50	19.85	101.991	
6,300.00	6,160.90	6,290.85	6,160.90	10.92	21.02	168.66	515.54	791.74	2,032.15	2,011.96	20.19	100.643	
6,400.00	6,260.80	6,390.74	6,260.80	10.98	21.16	168.70	515.54	791.74	2,036.54	2,016.03	20.50	99.320	
6,478.21	6,339.00	6,468.95	6,339.00	11.00	21.27	70.61	515.54	791.74	2,037.58	2,016.86	20.73	98.298	
6,500.00	6,360.79	6,490.73	6,360.79	11.00	21.30	70.61	515.54	791.74	2,037.58	2,016.81	20.78	98.067	
6,600.00	6,460.79	6,590.73	6,460.79	11.02	21.44	70.61	515.54	791.74	2,037.58	2,016.58	21.00	97.015	
6,700.00	6,560.79	6,690.73	6,560.79	11.03	21.58	70.61	515.54	791.74	2,037.58	2,016.35	21.23	95.980	
6,800.00	6,660.79	6,790.73	6,660.79	11.05	21.73	70.61	515.54	791.74	2,037.58	2,016.13	21.46	94.962	
6,900.00	6,760.79	6,890.73	6,760.79	11.07	21.88	70.61	515.54	791.74	2,037.58	2,015.90	21.69	93.961	
7,000.00	6,860.79	6,990.73	6,860.79	11.09	22.03	70.61	515.54	791.74	2,037.58	2,015.67	21.92	92.976	
7,100.00	6,960.79	7,090.73	6,960.79	11.10	22.18	70.61	515.54	791.74	2,037.58	2,015.44	22.15	92.007	
7,200.00	7,060.79	7,190.73	7,060.79	11.12	22.33	70.61	515.54	791.74	2,037.58	2,015.21	22.38	91.055	
7,300.00	7,160.79	7,290.73	7,160.79	11.14	22.48	70.61	515.54	791.74	2,037.58	2,014.97	22.61	90.118	
7,400.00	7,260.79	7,390.73	7,260.79	11.16	22.63	70.61	515.54	791.74	2,037.58	2,014.74	22.84	89.196	
7,500.00	7,360.79	7,490.73	7,360.79	11.17	22.79	70.61	515.54	791.74	2,037.58	2,014.51	23.08	88.290	
7,600.00	7,460.79	7,590.73	7,460.79	11.19	22.94	70.61	515.54	791.74	2,037.58	2,014.27	23.31	87.398	
7,700.00	7,560.79	7,690.73	7,560.79	11.21	23.10	70.61	515.54	791.74	2,037.58	2,014.03	23.55	86.522	
7,800.00	7,660.79	7,790.73	7,660.79	11.23	23.26	70.61	515.54	791.74	2,037.58	2,013.80	23.79	85.659	
7,900.00	7,760.79	7,890.73	7,760.79	11.25	23.42	70.61	515.54	791.74	2,037.58	2,013.56	24.02	84.811	
8,000.00	7,860.79	7,990.73	7,860.79	11.27	23.58	70.61	515.54	791.74	2,037.58	2,013.32	24.26	83.977	
8,014.98	7,875.77	8,005.72	7,875.77	11.27	23.60	70.61	515.54	791.74	2,037.58	2,013.28	24.30	83.853	
8,100.00	7,960.79	8,029.95	7,900.00	11.29	23.64	70.61	515.54	791.74	2,038.49	2,014.11	24.38	83.615	
8,200.00	8,060.79	8,029.95	7,900.00	11.31	23.64	70.61	515.54	791.74	2,043.92	2,019.50	24.42	83.711	
8,300.00	8,160.79	8,029.95	7,900.00	11.33	23.64	70.61	515.54	791.74	2,054.21	2,029.75	24.45	84.005	
8,400.00	8,260.79	8,029.95	7,900.00	11.35	23.64	70.61	515.54	791.74	2,069.28	2,044.79	24.49	84.492	
8,450.21	8,311.00	8,029.95	7,900.00	11.36	23.64	70.61	515.54	791.74	2,078.62	2,054.11	24.51	84.809	



<b>Company:</b>	US ROCKIES REGION PLANNING	<b>Local Co-ordinate Reference:</b>	Well P_DRY CREEK 31-27
<b>Project:</b>	KERR MCGEE OIL & GAS ONSHORE LP	<b>TVD Reference:</b>	WELL @ 5023.00ft (Original Well Elev)
<b>Reference Site:</b>	WELD_DRY CREEK PAD 7	<b>MD Reference:</b>	WELL @ 5023.00ft (Original Well Elev)
<b>Site Error:</b>	0.00ft	<b>North Reference:</b>	Grid
<b>Reference Well:</b>	P_DRY CREEK 31-27	<b>Survey Calculation Method:</b>	Minimum Curvature
<b>Well Error:</b>	0.00ft	<b>Output errors are at</b>	2.00 sigma
<b>Reference Wellbore</b>	P_DRY CREEK 31-27	<b>Database:</b>	EDM 2003.21 Single User Db
<b>Reference Design:</b>	PLAN #1 10-26-09 RHS	<b>Offset TVD Reference:</b>	Offset Datum

Offset Design WELD_DRY CREEK PAD 7 - P_DRY CREEK 4-27 - P_DRY CREEK 4-27 - PLAN #1 10-26-09 RHS												Offset Site Error:	0.00 ft
Survey Program: 0-MWD												Offset Well Error:	0.00 ft
Reference	Offset	Semi Major Axis		Distance		Warning							
Measured Depth (ft)	Vertical Depth (ft)	Measured Depth (ft)	Vertical Depth (ft)	Reference (ft)	Offset (ft)	Highside Toolface (°)	Offset Wellbore Centre +N/-S (ft)	+E/-W (ft)	Between Centres (ft)	Between Ellipses (ft)	Minimum Separation (ft)	Separation Factor	
0.00	0.00	0.00	0.00	0.00	0.00	89.60	0.21	30.80	30.81				
100.00	100.00	100.00	100.00	0.04	0.10	89.60	0.21	30.80	30.81	30.67	0.14	219.987	
200.00	200.00	200.00	200.00	0.10	0.32	89.60	0.21	30.80	30.81	30.39	0.42	73.845	
300.00	300.00	300.00	300.00	0.15	0.55	89.60	0.21	30.80	30.81	30.11	0.69	44.370	
400.00	400.00	400.00	400.00	0.20	0.77	89.60	0.21	30.80	30.81	29.83	0.97	31.712	
500.00	500.00	500.00	500.00	0.25	0.99	89.60	0.21	30.80	30.81	29.56	1.25	24.673	
600.00	600.00	600.00	600.00	0.31	1.22	89.60	0.21	30.80	30.81	29.28	1.53	20.191	
700.00	700.00	700.00	700.00	0.36	1.44	89.60	0.21	30.80	30.81	29.00	1.80	17.088	
800.00	800.00	800.00	800.00	0.41	1.67	89.60	0.21	30.80	30.81	28.73	2.08	14.811	
900.00	900.00	900.00	900.00	0.46	1.89	89.60	0.21	30.80	30.81	28.45	2.36	13.069	
1,000.00	1,000.00	1,000.00	1,000.00	0.52	2.12	89.60	0.21	30.80	30.81	28.17	2.63	11.694	
1,100.00	1,100.00	1,100.00	1,100.00	0.57	2.34	89.60	0.21	30.80	30.81	27.89	2.91	10.581	
1,200.00	1,200.00	1,200.00	1,200.00	0.62	2.57	89.60	0.21	30.80	30.81	27.62	3.19	9.662	
1,250.00	1,250.00	1,250.00	1,250.00	0.65	2.68	89.60	0.21	30.80	30.81	27.48	3.33	9.259 CC	
1,300.00	1,300.00	1,300.39	1,300.39	0.67	2.79	-172.97	0.51	30.48	30.92	27.45	3.46	8.927 ES	
1,400.00	1,399.93	1,401.11	1,401.04	0.73	3.01	-178.12	2.91	27.87	31.96	28.23	3.73	8.569 SF	
1,500.00	1,499.68	1,501.63	1,501.31	0.78	3.24	172.71	7.68	22.66	34.74	30.74	4.00	8.691	
1,600.00	1,599.13	1,601.81	1,600.93	0.85	3.47	161.79	14.79	14.90	40.23	35.96	4.28	9.410	
1,700.00	1,698.15	1,701.52	1,699.65	0.94	3.73	151.52	24.20	4.62	49.16	44.58	4.59	10.721	
1,800.00	1,796.63	1,800.64	1,797.25	1.05	4.01	143.15	35.85	-8.09	61.73	56.78	4.94	12.488	
1,900.00	1,894.44	1,899.05	1,893.51	1.19	4.32	136.78	49.67	-23.17	77.81	72.45	5.36	14.514	
1,985.37	1,977.32	1,982.41	1,974.46	1.34	4.62	132.62	63.12	-37.85	94.18	88.41	5.77	16.310	
2,000.00	1,991.47	1,996.63	1,988.21	1.36	4.68	132.04	65.57	-40.53	97.20	91.35	5.85	16.613	
2,100.00	2,088.19	2,093.46	2,081.33	1.56	5.08	127.94	83.49	-60.08	118.38	111.94	6.43	18.408	
2,200.00	2,184.92	2,189.45	2,172.70	1.77	5.54	123.80	103.35	-81.75	140.81	133.72	7.10	19.846	
2,300.00	2,281.64	2,284.39	2,262.06	1.98	6.06	119.74	125.01	-105.39	164.82	157.01	7.81	21.098	
2,400.00	2,378.37	2,379.74	2,350.95	2.20	6.62	115.99	148.32	-130.83	190.41	181.84	8.57	22.229	
2,500.00	2,475.09	2,475.71	2,440.35	2.43	7.22	113.07	171.88	-156.55	216.67	207.34	9.33	23.222	
2,600.00	2,571.81	2,571.67	2,529.75	2.65	7.84	110.77	195.45	-182.27	243.34	233.25	10.10	24.102	
2,700.00	2,668.54	2,667.64	2,619.15	2.88	8.48	108.93	219.02	-207.99	270.31	259.45	10.86	24.881	
2,800.00	2,765.26	2,763.60	2,708.55	3.11	9.13	107.42	242.58	-233.71	297.49	285.86	11.63	25.572	
2,900.00	2,861.98	2,859.57	2,797.95	3.34	9.78	106.16	266.15	-259.43	324.83	312.43	12.40	26.187	
3,000.00	2,958.71	2,955.53	2,887.35	3.58	10.45	105.10	289.72	-285.15	352.30	339.12	13.18	26.736	
3,100.00	3,055.43	3,051.50	2,976.75	3.81	11.12	104.19	313.28	-310.87	379.86	365.91	13.95	27.229	
3,200.00	3,152.15	3,147.46	3,066.15	4.04	11.80	103.41	336.85	-336.59	407.49	392.77	14.72	27.674	
3,300.00	3,248.88	3,243.43	3,155.55	4.28	12.48	102.72	360.42	-362.31	435.19	419.69	15.50	28.077	
3,400.00	3,345.60	3,339.39	3,244.95	4.51	13.16	102.12	383.98	-388.03	462.94	446.66	16.28	28.444	
3,500.00	3,442.32	3,435.36	3,334.35	4.75	13.85	101.58	407.55	-413.75	490.73	473.68	17.05	28.778	
3,600.00	3,539.05	3,531.32	3,423.75	4.98	14.54	101.10	431.12	-439.47	518.56	500.73	17.83	29.085	
3,700.00	3,635.77	3,627.29	3,513.15	5.22	15.23	100.67	454.68	-465.19	546.42	527.81	18.61	29.367	
3,800.00	3,732.49	3,723.25	3,602.55	5.46	15.93	100.29	478.25	-490.92	574.30	554.91	19.38	29.628	
3,900.00	3,829.22	3,819.22	3,691.95	5.69	16.63	99.93	501.82	-516.64	602.20	582.04	20.16	29.869	
4,000.00	3,925.94	3,919.63	3,785.56	5.93	17.31	99.61	526.36	-543.43	630.03	609.10	20.93	30.105	
4,100.00	4,022.66	4,032.13	3,891.57	6.17	17.92	99.51	551.79	-571.18	656.09	634.44	21.65	30.307	
4,200.00	4,119.39	4,146.04	4,000.32	6.40	18.48	99.72	574.66	-596.13	679.74	657.37	22.37	30.391	
4,300.00	4,216.11	4,261.02	4,111.38	6.64	18.99	100.21	594.75	-618.07	700.95	677.87	23.08	30.373	
4,400.00	4,312.84	4,376.71	4,224.24	6.88	19.44	100.97	611.92	-636.80	719.77	695.99	23.78	30.271	
4,500.00	4,409.56	4,492.74	4,338.37	7.11	19.83	101.98	626.04	-652.21	736.27	711.81	24.46	30.102	
4,600.00	4,506.28	4,608.73	4,453.20	7.35	20.16	103.22	637.01	-664.18	750.58	725.47	25.11	29.889	
4,700.00	4,603.01	4,724.30	4,568.19	7.59	20.42	104.69	644.81	-672.70	762.86	737.13	25.73	29.647	
4,800.00	4,699.73	4,839.08	4,682.76	7.83	20.62	106.38	649.46	-677.77	773.32	747.01	26.31	29.392	
4,900.00	4,796.45	4,952.72	4,796.36	8.07	20.76	108.28	651.00	-679.45	782.23	755.38	26.85	29.136	

CC - Min centre to center distance or convergent point, SF - min separation factor, ES - min ellipse separation

<b>Company:</b>	US ROCKIES REGION PLANNING	<b>Local Co-ordinate Reference:</b>	Well P_DRY CREEK 31-27
<b>Project:</b>	KERR MCGEE OIL & GAS ONSHORE LP	<b>TVD Reference:</b>	WELL @ 5023.00ft (Original Well Elev)
<b>Reference Site:</b>	WELD_DRY CREEK PAD 7	<b>MD Reference:</b>	WELL @ 5023.00ft (Original Well Elev)
<b>Site Error:</b>	0.00ft	<b>North Reference:</b>	Grid
<b>Reference Well:</b>	P_DRY CREEK 31-27	<b>Survey Calculation Method:</b>	Minimum Curvature
<b>Well Error:</b>	0.00ft	<b>Output errors are at</b>	2.00 sigma
<b>Reference Wellbore</b>	P_DRY CREEK 31-27	<b>Database:</b>	EDM 2003.21 Single User Db
<b>Reference Design:</b>	PLAN #1 10-26-09 RHS	<b>Offset TVD Reference:</b>	Offset Datum

Offset Design WELD_DRY CREEK PAD 7 - P_DRY CREEK 4-27 - P_DRY CREEK 4-27 - PLAN #1 10-26-09 RHS												Offset Site Error:	0.00 ft
Survey Program: 0-MWD												Offset Well Error:	0.00 ft
Reference	Offset	Semi Major Axis		Distance									
Measured Depth (ft)	Vertical Depth (ft)	Measured Depth (ft)	Vertical Depth (ft)	Reference (ft)	Offset (ft)	Highside Toolface (°)	Offset Wellbore Centre +N/-S (ft)	+E/-W (ft)	Between Centres (ft)	Between Ellipses (ft)	Minimum Separation (ft)	Separation Factor	Warning
5,000.00	4,893.18	5,049.53	4,893.18	8.30	20.86	109.98	651.00	-679.45	790.80	763.48	27.32	28.950	
5,100.00	4,989.90	5,146.26	4,989.90	8.54	20.97	111.64	651.00	-679.45	800.09	772.32	27.77	28.815	
5,200.00	5,086.62	5,242.98	5,086.62	8.78	21.07	113.27	651.00	-679.45	810.06	781.87	28.19	28.731	
5,300.00	5,183.35	5,339.71	5,183.35	9.02	21.19	114.85	651.00	-679.45	820.70	792.10	28.60	28.695	
5,400.00	5,280.07	5,436.43	5,280.07	9.26	21.30	116.40	651.00	-679.45	831.98	803.00	28.99	28.702	
5,500.00	5,376.79	5,533.15	5,376.79	9.49	21.41	117.90	651.00	-679.45	843.88	814.52	29.35	28.749	
5,600.00	5,473.52	5,629.88	5,473.52	9.73	21.53	119.36	651.00	-679.45	856.36	826.66	29.70	28.834	
5,700.00	5,570.24	5,726.60	5,570.24	9.97	21.64	120.79	651.00	-679.45	869.40	839.37	30.03	28.952	
5,742.84	5,611.68	5,768.04	5,611.68	10.07	21.69	121.38	651.00	-679.45	875.15	844.99	30.16	29.013	
5,800.00	5,667.11	5,823.46	5,667.11	10.20	21.76	122.27	651.00	-679.45	882.68	852.25	30.43	29.009	
5,900.00	5,764.71	5,921.06	5,764.71	10.41	21.88	123.63	651.00	-679.45	894.71	863.85	30.86	28.990	
6,000.00	5,863.01	6,019.36	5,863.01	10.58	22.01	124.76	651.00	-679.45	905.14	873.87	31.27	28.948	
6,100.00	5,961.89	6,118.24	5,961.89	10.73	22.13	125.66	651.00	-679.45	913.79	882.15	31.64	28.877	
6,200.00	6,061.22	6,217.58	6,061.22	10.84	22.26	126.35	651.00	-679.45	920.54	888.54	32.00	28.770	
6,300.00	6,160.90	6,317.26	6,160.90	10.92	22.39	126.82	651.00	-679.45	925.29	892.97	32.32	28.626	
6,400.00	6,260.80	6,417.16	6,260.80	10.98	22.52	127.08	651.00	-679.45	927.98	895.36	32.63	28.441	
6,478.21	6,339.00	6,495.36	6,339.00	11.00	22.62	29.05	651.00	-679.45	928.63	895.78	32.85	28.270	
6,500.00	6,360.79	6,517.15	6,360.79	11.00	22.65	29.05	651.00	-679.45	928.63	895.74	32.88	28.241	
6,600.00	6,460.79	6,617.15	6,460.79	11.02	22.79	29.05	651.00	-679.45	928.63	895.59	33.04	28.107	
6,700.00	6,560.79	6,717.15	6,560.79	11.03	22.92	29.05	651.00	-679.45	928.63	895.43	33.20	27.974	
6,800.00	6,660.79	6,817.15	6,660.79	11.05	23.06	29.05	651.00	-679.45	928.63	895.27	33.36	27.840	
6,900.00	6,760.79	6,917.15	6,760.79	11.07	23.20	29.05	651.00	-679.45	928.63	895.11	33.52	27.706	
7,000.00	6,860.79	7,017.15	6,860.79	11.09	23.34	29.05	651.00	-679.45	928.63	894.95	33.68	27.572	
7,100.00	6,960.79	7,117.15	6,960.79	11.10	23.48	29.05	651.00	-679.45	928.63	894.78	33.84	27.439	
7,200.00	7,060.79	7,217.15	7,060.79	11.12	23.62	29.05	651.00	-679.45	928.63	894.62	34.01	27.305	
7,300.00	7,160.79	7,317.15	7,160.79	11.14	23.77	29.05	651.00	-679.45	928.63	894.45	34.18	27.172	
7,400.00	7,260.79	7,417.15	7,260.79	11.16	23.91	29.05	651.00	-679.45	928.63	894.28	34.35	27.038	
7,500.00	7,360.79	7,517.15	7,360.79	11.17	24.06	29.05	651.00	-679.45	928.63	894.11	34.52	26.905	
7,600.00	7,460.79	7,617.15	7,460.79	11.19	24.21	29.05	651.00	-679.45	928.63	893.94	34.69	26.772	
7,700.00	7,560.79	7,717.15	7,560.79	11.21	24.35	29.05	651.00	-679.45	928.63	893.77	34.86	26.639	
7,800.00	7,660.79	7,817.15	7,660.79	11.23	24.50	29.05	651.00	-679.45	928.63	893.59	35.03	26.507	
7,900.00	7,760.79	7,917.15	7,760.79	11.25	24.66	29.05	651.00	-679.45	928.63	893.42	35.21	26.374	
8,000.00	7,860.79	8,017.15	7,860.79	11.27	24.81	29.05	651.00	-679.45	928.63	893.24	35.39	26.243	
8,030.84	7,891.63	8,047.99	7,891.63	11.27	24.85	29.05	651.00	-679.45	928.63	893.19	35.44	26.202	
8,100.00	7,960.79	8,065.36	7,909.00	11.29	24.88	29.05	651.00	-679.45	930.07	894.59	35.48	26.211	
8,200.00	8,060.79	8,065.36	7,909.00	11.31	24.88	29.05	651.00	-679.45	940.95	905.44	35.51	26.500	
8,300.00	8,160.79	8,065.36	7,909.00	11.33	24.88	29.05	651.00	-679.45	962.16	926.63	35.53	27.080	
8,400.00	8,260.79	8,065.36	7,909.00	11.35	24.88	29.05	651.00	-679.45	993.03	957.47	35.55	27.930	
8,450.21	8,311.00	8,065.36	7,909.00	11.36	24.88	29.05	651.00	-679.45	1,011.91	976.34	35.57	28.452	



<b>Company:</b>	US ROCKIES REGION PLANNING	<b>Local Co-ordinate Reference:</b>	Well P_DRY CREEK 31-27
<b>Project:</b>	KERR MCGEE OIL & GAS ONSHORE LP	<b>TVD Reference:</b>	WELL @ 5023.00ft (Original Well Elev)
<b>Reference Site:</b>	WELD_DRY CREEK PAD 7	<b>MD Reference:</b>	WELL @ 5023.00ft (Original Well Elev)
<b>Site Error:</b>	0.00ft	<b>North Reference:</b>	Grid
<b>Reference Well:</b>	P_DRY CREEK 31-27	<b>Survey Calculation Method:</b>	Minimum Curvature
<b>Well Error:</b>	0.00ft	<b>Output errors are at</b>	2.00 sigma
<b>Reference Wellbore</b>	P_DRY CREEK 31-27	<b>Database:</b>	EDM 2003.21 Single User Db
<b>Reference Design:</b>	PLAN #1 10-26-09 RHS	<b>Offset TVD Reference:</b>	Offset Datum

Offset Design WELD_DRY CREEK PAD 7 - P_DRY CREEK 5-27 - P_DRY CREEK 5-27 - PLAN #1 10-26-09 RHS												Offset Site Error:	0.00 ft
Survey Program: 0-MWD												Offset Well Error:	0.00 ft
Reference	Offset	Semi Major Axis		Distance		Warning							
Measured Depth (ft)	Vertical Depth (ft)	Measured Depth (ft)	Vertical Depth (ft)	Reference (ft)	Offset (ft)	Highside Toolface (°)	Offset Wellbore Centre +N/-S (ft)	+E/-W (ft)	Between Centres (ft)	Between Ellipses (ft)	Minimum Separation (ft)	Separation Factor	
0.00	0.00	0.00	0.00	0.00	0.00	89.63	0.11	16.80	16.80				
100.00	100.00	100.00	100.00	0.04	0.10	89.63	0.11	16.80	16.80	16.66	0.14	119.993	
200.00	200.00	200.00	200.00	0.10	0.32	89.63	0.11	16.80	16.80	16.39	0.42	40.279	
300.00	300.00	300.00	300.00	0.15	0.55	89.63	0.11	16.80	16.80	16.11	0.69	24.202	
400.00	400.00	400.00	400.00	0.20	0.77	89.63	0.11	16.80	16.80	15.83	0.97	17.297	
500.00	500.00	500.00	500.00	0.25	0.99	89.63	0.11	16.80	16.80	15.55	1.25	13.458	
600.00	600.00	600.00	600.00	0.31	1.22	89.63	0.11	16.80	16.80	15.28	1.53	11.013	
700.00	700.00	700.00	700.00	0.36	1.44	89.63	0.11	16.80	16.80	15.00	1.80	9.320	
800.00	800.00	800.00	800.00	0.41	1.67	89.63	0.11	16.80	16.80	14.72	2.08	8.079	
900.00	900.00	900.00	900.00	0.46	1.89	89.63	0.11	16.80	16.80	14.45	2.36	7.129	
1,000.00	1,000.00	1,000.00	1,000.00	0.52	2.12	89.63	0.11	16.80	16.80	14.17	2.63	6.379	
1,100.00	1,100.00	1,100.00	1,100.00	0.57	2.34	89.63	0.11	16.80	16.80	13.89	2.91	5.772	
1,200.00	1,200.00	1,200.00	1,200.00	0.62	2.57	89.63	0.11	16.80	16.80	13.61	3.19	5.270	
1,250.00	1,250.00	1,250.00	1,250.00	0.65	2.68	89.63	0.11	16.80	16.80	13.48	3.33	5.050 CC, ES	
1,300.00	1,300.00	1,300.16	1,300.16	0.67	2.78	-171.23	-0.26	16.56	17.00	13.55	3.45	4.924 SF	
1,400.00	1,399.93	1,400.41	1,400.34	0.73	2.96	-163.76	-3.20	14.65	18.73	15.06	3.68	5.095	
1,500.00	1,499.68	1,500.48	1,500.16	0.78	3.14	-152.66	-9.07	10.85	22.92	19.01	3.91	5.860	
1,600.00	1,599.13	1,600.23	1,599.36	0.85	3.35	-142.33	-17.83	5.17	30.20	26.03	4.17	7.243	
1,700.00	1,698.15	1,699.55	1,697.71	0.94	3.57	-134.57	-29.42	-2.35	40.73	36.26	4.46	9.123	
1,800.00	1,796.63	1,798.32	1,794.98	1.05	3.83	-129.16	-43.78	-11.66	54.42	49.61	4.81	11.312	
1,900.00	1,894.44	1,896.43	1,890.96	1.19	4.13	-125.39	-60.82	-22.71	71.12	65.90	5.22	13.631	
1,985.37	1,977.32	1,979.58	1,971.72	1.34	4.42	-123.03	-77.42	-33.48	87.67	82.05	5.62	15.597	
2,000.00	1,991.47	1,993.78	1,985.45	1.36	4.47	-122.72	-80.44	-35.44	90.70	85.00	5.69	15.926	
2,100.00	2,088.19	2,090.42	2,078.41	1.56	4.87	-120.10	-102.58	-49.79	111.98	105.73	6.25	17.921	
2,200.00	2,184.92	2,186.26	2,169.68	1.77	5.32	-116.99	-127.11	-65.71	134.54	127.68	6.86	19.618	
2,300.00	2,281.64	2,281.11	2,258.99	1.98	5.83	-113.71	-153.90	-83.08	158.66	151.15	7.51	21.123	
2,400.00	2,378.37	2,375.62	2,346.88	2.20	6.39	-110.39	-183.05	-101.98	184.58	176.39	8.19	22.526	
2,500.00	2,475.09	2,470.48	2,434.51	2.43	7.01	-107.48	-213.52	-121.75	211.75	202.85	8.90	23.785	
2,600.00	2,571.81	2,566.22	2,522.95	2.65	7.65	-105.22	-244.28	-141.69	239.32	229.70	9.62	24.881	
2,700.00	2,668.54	2,661.96	2,611.40	2.88	8.31	-103.41	-275.03	-161.64	267.17	256.83	10.34	25.839	
2,800.00	2,765.26	2,757.69	2,699.84	3.11	8.98	-101.95	-305.79	-181.59	295.22	284.15	11.07	26.680	
2,900.00	2,861.98	2,853.43	2,788.28	3.34	9.66	-100.74	-336.54	-201.53	323.41	311.62	11.79	27.421	
3,000.00	2,958.71	2,949.17	2,876.73	3.58	10.34	-99.73	-367.30	-221.48	351.72	339.19	12.53	28.077	
3,100.00	3,055.43	3,044.91	2,965.17	3.81	11.04	-98.87	-398.05	-241.42	380.11	366.85	13.26	28.661	
3,200.00	3,152.15	3,140.65	3,053.61	4.04	11.74	-98.12	-428.81	-261.37	408.57	394.57	14.00	29.183	
3,300.00	3,248.88	3,236.39	3,142.05	4.28	12.44	-97.47	-459.56	-281.32	437.08	422.34	14.74	29.651	
3,400.00	3,345.60	3,332.13	3,230.50	4.51	13.15	-96.91	-490.32	-301.26	465.65	450.16	15.48	30.074	
3,500.00	3,442.32	3,427.86	3,318.94	4.75	13.86	-96.40	-521.07	-321.21	494.24	478.02	16.23	30.457	
3,600.00	3,539.05	3,523.60	3,407.38	4.98	14.58	-95.96	-551.83	-341.15	522.87	505.90	16.97	30.805	
3,700.00	3,635.77	3,619.34	3,495.83	5.22	15.29	-95.55	-582.58	-361.10	551.53	533.81	17.72	31.123	
3,800.00	3,732.49	3,715.08	3,584.27	5.46	16.01	-95.19	-613.34	-381.05	580.21	561.74	18.47	31.414	
3,900.00	3,829.22	3,816.69	3,678.24	5.69	16.72	-94.87	-645.75	-402.07	608.73	589.52	19.21	31.684	
4,000.00	3,925.94	3,929.57	3,783.93	5.93	17.31	-94.78	-679.01	-423.64	635.25	615.33	19.92	31.893	
4,100.00	4,022.66	4,043.99	3,892.56	6.17	17.87	-95.01	-709.13	-443.17	659.18	638.54	20.64	31.942	
4,200.00	4,119.39	4,159.59	4,003.69	6.40	18.39	-95.51	-735.84	-460.49	680.52	659.16	21.36	31.856	
4,300.00	4,216.11	4,276.03	4,116.82	6.64	18.86	-96.28	-758.92	-475.46	699.29	677.20	22.09	31.661	
4,400.00	4,312.84	4,392.92	4,231.43	6.88	19.28	-97.29	-778.19	-487.96	715.56	692.76	22.80	31.381	
4,500.00	4,409.56	4,509.88	4,346.93	7.11	19.63	-98.54	-793.53	-497.91	729.45	705.95	23.50	31.043	
4,600.00	4,506.28	4,626.50	4,462.77	7.35	19.92	-100.03	-804.88	-505.27	741.11	716.94	24.17	30.668	
4,700.00	4,603.01	4,742.42	4,578.35	7.59	20.14	-101.73	-812.23	-510.04	750.75	725.95	24.80	30.274	
4,800.00	4,699.73	4,857.27	4,693.11	7.83	20.31	-103.65	-815.63	-512.25	758.62	733.23	25.39	29.879	
4,900.00	4,796.45	4,960.61	4,796.45	8.07	20.42	-105.55	-815.92	-512.43	765.41	739.50	25.91	29.538	

CC - Min centre to center distance or convergent point, SF - min separation factor, ES - min ellipse separation

<b>Company:</b>	US ROCKIES REGION PLANNING	<b>Local Co-ordinate Reference:</b>	Well P_DRY CREEK 31-27
<b>Project:</b>	KERR MCGEE OIL & GAS ONSHORE LP	<b>TVD Reference:</b>	WELL @ 5023.00ft (Original Well Elev)
<b>Reference Site:</b>	WELD_DRY CREEK PAD 7	<b>MD Reference:</b>	WELL @ 5023.00ft (Original Well Elev)
<b>Site Error:</b>	0.00ft	<b>North Reference:</b>	Grid
<b>Reference Well:</b>	P_DRY CREEK 31-27	<b>Survey Calculation Method:</b>	Minimum Curvature
<b>Well Error:</b>	0.00ft	<b>Output errors are at</b>	2.00 sigma
<b>Reference Wellbore</b>	P_DRY CREEK 31-27	<b>Database:</b>	EDM 2003.21 Single User Db
<b>Reference Design:</b>	PLAN #1 10-26-09 RHS	<b>Offset TVD Reference:</b>	Offset Datum

Offset Design WELD_DRY CREEK PAD 7 - P_DRY CREEK 5-27 - P_DRY CREEK 5-27 - PLAN #1 10-26-09 RHS												Offset Site Error:	0.00 ft
Survey Program: 0-MWD												Offset Well Error:	0.00 ft
Reference		Offset		Semi Major Axis			Distance						
Measured Depth (ft)	Vertical Depth (ft)	Measured Depth (ft)	Vertical Depth (ft)	Reference (ft)	Offset (ft)	Highside Toolface (°)	Offset Wellbore Centre +N/-S (ft)	+E/-W (ft)	Between Centres (ft)	Between Ellipses (ft)	Minimum Separation (ft)	Separation Factor	Warning
5,000.00	4,893.18	5,057.33	4,893.18	8.30	20.52	-107.31	-815.92	-512.43	772.82	746.42	26.39	29.282	
5,100.00	4,989.90	5,154.06	4,989.90	8.54	20.62	-109.03	-815.92	-512.43	780.97	754.12	26.85	29.086	
5,200.00	5,086.62	5,250.78	5,086.62	8.78	20.72	-110.72	-815.92	-512.43	789.86	762.57	27.29	28.943	
5,300.00	5,183.35	5,347.50	5,183.35	9.02	20.82	-112.38	-815.92	-512.43	799.46	771.75	27.71	28.851	
5,400.00	5,280.07	5,444.23	5,280.07	9.26	20.93	-113.99	-815.92	-512.43	809.74	781.63	28.11	28.806	
5,500.00	5,376.79	5,540.95	5,376.79	9.49	21.03	-115.57	-815.92	-512.43	820.68	792.19	28.49	28.803	
5,600.00	5,473.52	5,637.67	5,473.52	9.73	21.14	-117.11	-815.92	-512.43	832.25	803.39	28.86	28.840	
5,700.00	5,570.24	5,734.40	5,570.24	9.97	21.25	-118.60	-815.92	-512.43	844.42	815.22	29.21	28.913	
5,742.84	5,611.68	5,775.84	5,611.68	10.07	21.30	-119.23	-815.92	-512.43	849.82	820.47	29.35	28.955	
5,800.00	5,667.11	5,831.26	5,667.11	10.20	21.36	-120.15	-815.92	-512.43	856.89	827.32	29.57	28.976	
5,900.00	5,764.71	5,928.86	5,764.71	10.41	21.48	-121.56	-815.92	-512.43	868.25	838.33	29.93	29.013	
6,000.00	5,863.01	6,027.16	5,863.01	10.58	21.59	-122.74	-815.92	-512.43	878.13	847.89	30.24	29.038	
6,100.00	5,961.89	6,126.04	5,961.89	10.73	21.71	-123.68	-815.92	-512.43	886.35	855.83	30.52	29.043	
6,200.00	6,061.22	6,225.38	6,061.22	10.84	21.83	-124.39	-815.92	-512.43	892.78	862.01	30.76	29.020	
6,300.00	6,160.90	6,325.06	6,160.90	10.92	21.95	-124.89	-815.92	-512.43	897.31	866.33	30.98	28.965	
6,400.00	6,260.80	6,424.96	6,260.80	10.98	22.08	-125.16	-815.92	-512.43	899.88	868.72	31.16	28.875	
6,478.21	6,339.00	6,503.16	6,339.00	11.00	22.18	136.67	-815.92	-512.43	900.50	869.20	31.29	28.778	
6,500.00	6,360.79	6,524.95	6,360.79	11.00	22.21	136.67	-815.92	-512.43	900.50	869.17	31.32	28.748	
6,600.00	6,460.79	6,624.95	6,460.79	11.02	22.33	136.67	-815.92	-512.43	900.50	869.02	31.47	28.612	
6,700.00	6,560.79	6,724.95	6,560.79	11.03	22.46	136.67	-815.92	-512.43	900.50	868.87	31.62	28.475	
6,800.00	6,660.79	6,824.95	6,660.79	11.05	22.59	136.67	-815.92	-512.43	900.50	868.72	31.78	28.338	
6,900.00	6,760.79	6,924.95	6,760.79	11.07	22.73	136.67	-815.92	-512.43	900.50	868.56	31.93	28.200	
7,000.00	6,860.79	7,024.95	6,860.79	11.09	22.86	136.67	-815.92	-512.43	900.50	868.41	32.09	28.063	
7,100.00	6,960.79	7,124.95	6,960.79	11.10	23.00	136.67	-815.92	-512.43	900.50	868.25	32.25	27.925	
7,200.00	7,060.79	7,224.95	7,060.79	11.12	23.13	136.67	-815.92	-512.43	900.50	868.09	32.41	27.788	
7,300.00	7,160.79	7,324.95	7,160.79	11.14	23.27	136.67	-815.92	-512.43	900.50	867.93	32.57	27.650	
7,400.00	7,260.79	7,424.95	7,260.79	11.16	23.41	136.67	-815.92	-512.43	900.50	867.77	32.73	27.513	
7,500.00	7,360.79	7,524.95	7,360.79	11.17	23.55	136.67	-815.92	-512.43	900.50	867.60	32.89	27.375	
7,600.00	7,460.79	7,624.95	7,460.79	11.19	23.69	136.67	-815.92	-512.43	900.50	867.44	33.06	27.238	
7,700.00	7,560.79	7,724.95	7,560.79	11.21	23.83	136.67	-815.92	-512.43	900.50	867.27	33.23	27.101	
7,800.00	7,660.79	7,824.95	7,660.79	11.23	23.98	136.67	-815.92	-512.43	900.50	867.10	33.40	26.964	
7,900.00	7,760.79	7,924.95	7,760.79	11.25	24.13	136.67	-815.92	-512.43	900.50	866.93	33.57	26.827	
8,000.00	7,860.79	8,024.95	7,860.79	11.27	24.27	136.67	-815.92	-512.43	900.50	866.76	33.74	26.690	
8,100.00	7,960.79	8,043.16	7,879.00	11.29	24.30	136.67	-815.92	-512.43	904.20	870.41	33.79	26.761	
8,200.00	8,060.79	8,043.16	7,879.00	11.31	24.30	136.67	-815.92	-512.43	918.66	884.85	33.81	27.170	
8,300.00	8,160.79	8,043.16	7,879.00	11.33	24.30	136.67	-815.92	-512.43	943.56	909.72	33.83	27.888	
8,400.00	8,260.79	8,043.16	7,879.00	11.35	24.30	136.67	-815.92	-512.43	978.09	944.23	33.86	28.888	
8,450.21	8,311.00	8,043.16	7,879.00	11.36	24.30	136.67	-815.92	-512.43	998.76	964.89	33.87	29.489	

<b>Company:</b>	US ROCKIES REGION PLANNING	<b>Local Co-ordinate Reference:</b>	Well P_DRY CREEK 31-27
<b>Project:</b>	KERR MCGEE OIL & GAS ONSHORE LP	<b>TVD Reference:</b>	WELL @ 5023.00ft (Original Well Elev)
<b>Reference Site:</b>	WELD_DRY CREEK PAD 7	<b>MD Reference:</b>	WELL @ 5023.00ft (Original Well Elev)
<b>Site Error:</b>	0.00ft	<b>North Reference:</b>	Grid
<b>Reference Well:</b>	P_DRY CREEK 31-27	<b>Survey Calculation Method:</b>	Minimum Curvature
<b>Well Error:</b>	0.00ft	<b>Output errors are at</b>	2.00 sigma
<b>Reference Wellbore</b>	P_DRY CREEK 31-27	<b>Database:</b>	EDM 2003.21 Single User Db
<b>Reference Design:</b>	PLAN #1 10-26-09 RHS	<b>Offset TVD Reference:</b>	Offset Datum

Offset Design												Offset Site Error:	0.00 ft
WELD_DRY CREEK PAD 7 - P_DRY CREEK 6-27 - P_DRY CREEK 6-27 - PLAN #1 10-26-09 RHS												Offset Well Error:	0.00 ft
Survey Program: 0-MWD													
Reference		Offset		Semi Major Axis			Distance						
Measured Depth (ft)	Vertical Depth (ft)	Measured Depth (ft)	Vertical Depth (ft)	Reference (ft)	Offset (ft)	Highside Toolface (°)	Offset Wellbore Centre +N/-S (ft)	+E/-W (ft)	Between Centres (ft)	Between Ellipses (ft)	Minimum Separation (ft)	Separation Factor	Warning
0.00	0.00	0.00	0.00	0.00	0.00	89.60	0.45	64.41	64.41				
100.00	100.00	100.00	100.00	0.04	0.10	89.60	0.45	64.41	64.41	64.27	0.14	459.973	
200.00	200.00	200.00	200.00	0.10	0.32	89.60	0.45	64.41	64.41	63.99	0.42	154.404	
300.00	300.00	300.00	300.00	0.15	0.55	89.60	0.45	64.41	64.41	63.72	0.69	92.773	
400.00	400.00	400.00	400.00	0.20	0.77	89.60	0.45	64.41	64.41	63.44	0.97	66.307	
500.00	500.00	500.00	500.00	0.25	0.99	89.60	0.45	64.41	64.41	63.16	1.25	51.589	
600.00	600.00	600.00	600.00	0.31	1.22	89.60	0.45	64.41	64.41	62.89	1.53	42.218	
700.00	700.00	700.00	700.00	0.36	1.44	89.60	0.45	64.41	64.41	62.61	1.80	35.728	
800.00	800.00	800.00	800.00	0.41	1.67	89.60	0.45	64.41	64.41	62.33	2.08	30.968	
900.00	900.00	900.00	900.00	0.46	1.89	89.60	0.45	64.41	64.41	62.05	2.36	27.327	
1,000.00	1,000.00	1,000.00	1,000.00	0.52	2.12	89.60	0.45	64.41	64.41	61.78	2.63	24.452	
1,100.00	1,100.00	1,100.00	1,100.00	0.57	2.34	89.60	0.45	64.41	64.41	61.50	2.91	22.124	
1,200.00	1,200.00	1,200.00	1,200.00	0.62	2.57	89.60	0.45	64.41	64.41	61.22	3.19	20.201	
1,250.00	1,250.00	1,250.00	1,250.00	0.65	2.68	89.60	0.45	64.41	64.41	61.08	3.33	19.360 CC, ES	
1,300.00	1,300.00	1,299.24	1,299.24	0.67	2.78	-172.07	0.14	64.70	65.13	61.68	3.45	18.874 SF	
1,400.00	1,399.93	1,397.45	1,397.39	0.73	2.96	-170.43	-2.34	66.98	70.94	67.26	3.67	19.304	
1,500.00	1,499.68	1,494.84	1,494.54	0.78	3.14	-167.83	-7.23	71.50	82.65	78.75	3.90	21.191	
1,600.00	1,599.13	1,590.88	1,590.07	0.85	3.34	-165.07	-14.43	78.15	100.36	96.23	4.13	24.302	
1,700.00	1,698.15	1,685.07	1,683.40	0.94	3.56	-162.59	-23.77	86.78	124.02	119.66	4.36	28.421	
1,800.00	1,796.63	1,776.97	1,774.00	1.05	3.80	-160.54	-35.05	97.20	153.52	148.92	4.61	33.334	
1,900.00	1,894.44	1,866.17	1,861.43	1.19	4.07	-158.87	-48.04	109.20	188.66	183.81	4.86	38.849	
1,985.37	1,977.32	1,939.92	1,933.27	1.34	4.32	-157.69	-60.28	120.50	222.96	217.88	5.08	43.902	
2,000.00	1,991.47	1,952.33	1,945.32	1.36	4.36	-157.55	-62.48	122.53	229.19	224.06	5.12	44.740	
2,100.00	2,088.19	2,035.99	2,026.16	1.56	4.69	-156.61	-78.26	137.11	273.07	267.63	5.43	50.262	
2,200.00	2,184.92	2,117.50	2,104.31	1.77	5.05	-155.68	-95.30	152.85	319.17	313.41	5.76	55.444	
2,300.00	2,281.64	2,200.00	2,182.68	1.98	5.45	-154.74	-114.20	170.31	367.46	361.36	6.10	60.230	
2,400.00	2,378.37	2,273.95	2,252.29	2.20	5.87	-153.91	-132.55	187.26	417.83	411.38	6.44	64.842	
2,500.00	2,475.09	2,348.84	2,322.09	2.43	6.33	-153.09	-152.47	205.65	470.25	463.45	6.80	69.134	
2,600.00	2,571.81	2,421.49	2,389.11	2.65	6.81	-152.32	-173.07	224.68	524.65	517.49	7.16	73.231	
2,700.00	2,668.54	2,491.92	2,453.38	2.88	7.31	-151.59	-194.22	244.22	580.95	573.42	7.53	77.139	
2,800.00	2,765.26	2,560.14	2,514.95	3.11	7.84	-150.91	-215.81	264.16	639.07	631.17	7.91	80.830	
2,900.00	2,861.98	2,626.19	2,573.87	3.34	8.37	-150.26	-237.73	284.41	698.95	690.67	8.28	84.451	
3,000.00	2,958.71	2,702.17	2,641.10	3.58	9.03	-149.58	-263.74	308.42	760.00	751.31	8.69	87.419	
3,100.00	3,055.43	2,781.02	2,710.85	3.81	9.72	-148.97	-290.74	333.36	821.15	812.02	9.13	89.952	
3,200.00	3,152.15	2,859.86	2,780.61	4.04	10.43	-148.45	-317.74	358.30	882.35	872.78	9.57	92.223	
3,300.00	3,248.88	2,938.70	2,850.36	4.28	11.14	-147.99	-344.74	383.24	943.59	933.58	10.01	94.268	
3,400.00	3,345.60	3,017.55	2,920.11	4.51	11.86	-147.59	-371.74	408.18	1,004.86	994.41	10.45	96.114	
3,500.00	3,442.32	3,096.39	2,989.86	4.75	12.58	-147.24	-398.74	433.12	1,066.17	1,055.26	10.90	97.782	
3,600.00	3,539.05	3,175.24	3,059.62	4.98	13.32	-146.92	-425.74	458.06	1,127.49	1,116.13	11.36	99.284	
3,700.00	3,635.77	3,254.08	3,129.37	5.22	14.05	-146.64	-452.74	483.00	1,188.83	1,177.02	11.81	100.656	
3,800.00	3,732.49	3,332.93	3,199.12	5.46	14.79	-146.38	-479.74	507.94	1,250.19	1,237.92	12.27	101.911	
3,900.00	3,829.22	3,411.77	3,268.88	5.69	15.53	-146.15	-506.74	532.88	1,311.57	1,298.84	12.73	103.063	
4,000.00	3,925.94	3,490.62	3,338.63	5.93	16.28	-145.94	-533.74	557.82	1,372.95	1,359.76	13.19	104.119	
4,100.00	4,022.66	3,570.33	3,409.15	6.17	17.03	-145.74	-561.04	583.03	1,434.35	1,420.70	13.65	105.071	
4,200.00	4,119.39	3,721.92	3,545.11	6.40	18.14	-145.49	-610.26	628.49	1,493.79	1,479.47	14.32	104.314	
4,300.00	4,216.11	3,884.78	3,694.91	6.64	19.21	-145.41	-657.17	671.82	1,549.10	1,534.09	15.01	103.199	
4,400.00	4,312.84	4,059.05	3,858.93	6.88	20.23	-145.50	-700.35	711.71	1,599.82	1,584.10	15.72	101.782	
4,500.00	4,409.56	4,244.53	4,037.09	7.11	21.15	-145.76	-738.17	746.64	1,645.50	1,629.07	16.43	100.157	
4,600.00	4,506.28	4,440.64	4,228.66	7.35	21.93	-146.19	-768.87	774.99	1,685.66	1,668.54	17.13	98.430	
4,700.00	4,603.01	4,646.34	4,432.16	7.59	22.53	-146.81	-790.64	795.10	1,719.90	1,702.11	17.79	96.691	
4,800.00	4,699.73	4,860.08	4,645.31	7.83	22.93	-147.61	-801.84	805.45	1,747.84	1,729.44	18.40	95.012	
4,900.00	4,796.45	5,011.24	4,796.45	8.07	23.10	-148.27	-803.06	806.58	1,770.25	1,751.43	18.83	94.027	

CC - Min centre to center distance or convergent point, SF - min separation factor, ES - min ellipse separation

<b>Company:</b>	US ROCKIES REGION PLANNING	<b>Local Co-ordinate Reference:</b>	Well P_DRY CREEK 31-27
<b>Project:</b>	KERR MCGEE OIL & GAS ONSHORE LP	<b>TVD Reference:</b>	WELL @ 5023.00ft (Original Well Elev)
<b>Reference Site:</b>	WELD_DRY CREEK PAD 7	<b>MD Reference:</b>	WELL @ 5023.00ft (Original Well Elev)
<b>Site Error:</b>	0.00ft	<b>North Reference:</b>	Grid
<b>Reference Well:</b>	P_DRY CREEK 31-27	<b>Survey Calculation Method:</b>	Minimum Curvature
<b>Well Error:</b>	0.00ft	<b>Output errors are at</b>	2.00 sigma
<b>Reference Wellbore</b>	P_DRY CREEK 31-27	<b>Database:</b>	EDM 2003.21 Single User Db
<b>Reference Design:</b>	PLAN #1 10-26-09 RHS	<b>Offset TVD Reference:</b>	Offset Datum

Offset Design WELD_DRY CREEK PAD 7 - P_DRY CREEK 6-27 - P_DRY CREEK 6-27 - PLAN #1 10-26-09 RHS												Offset Site Error:	0.00 ft
Survey Program: 0-MWD												Offset Well Error:	0.00 ft
Reference		Offset		Semi Major Axis			Distance						
Measured Depth (ft)	Vertical Depth (ft)	Measured Depth (ft)	Vertical Depth (ft)	Reference (ft)	Offset (ft)	Highside Toolface (°)	Offset Wellbore Centre +N/-S (ft)	+E/-W (ft)	Between Centres (ft)	Between Ellipses (ft)	Minimum Separation (ft)	Separation Factor	Warning
5,000.00	4,893.18	5,107.96	4,893.18	8.30	23.19	-148.69	-803.06	806.58	1,792.09	1,772.94	19.15	93.579	
5,100.00	4,989.90	5,204.69	4,989.90	8.54	23.28	-149.10	-803.06	806.58	1,814.02	1,794.54	19.47	93.157	
5,200.00	5,086.62	5,301.41	5,086.62	8.78	23.37	-149.51	-803.06	806.58	1,836.03	1,816.24	19.79	92.760	
5,300.00	5,183.35	5,398.13	5,183.35	9.02	23.46	-149.90	-803.06	806.58	1,858.14	1,838.02	20.11	92.386	
5,400.00	5,280.07	5,494.86	5,280.07	9.26	23.56	-150.29	-803.06	806.58	1,880.32	1,859.89	20.43	92.035	
5,500.00	5,376.79	5,591.58	5,376.79	9.49	23.66	-150.66	-803.06	806.58	1,902.59	1,881.84	20.75	91.704	
5,600.00	5,473.52	5,688.30	5,473.52	9.73	23.76	-151.03	-803.06	806.58	1,924.93	1,903.87	21.06	91.393	
5,700.00	5,570.24	5,785.03	5,570.24	9.97	23.86	-151.39	-803.06	806.58	1,947.35	1,925.98	21.38	91.099	
5,742.84	5,611.68	5,826.46	5,611.68	10.07	23.90	-151.54	-803.06	806.58	1,956.98	1,935.47	21.51	90.979	
5,800.00	5,667.11	5,881.89	5,667.11	10.20	23.96	-151.85	-803.06	806.58	1,969.35	1,947.54	21.82	90.272	
5,900.00	5,764.71	5,979.49	5,764.71	10.41	24.07	-152.33	-803.06	806.58	1,988.68	1,966.36	22.32	89.105	
6,000.00	5,863.01	6,077.79	5,863.01	10.58	24.17	-152.72	-803.06	806.58	2,005.00	1,982.22	22.78	88.015	
6,100.00	5,961.89	6,176.67	5,961.89	10.73	24.28	-153.04	-803.06	806.58	2,018.29	1,995.08	23.20	86.992	
6,200.00	6,061.22	6,276.01	6,061.22	10.84	24.39	-153.28	-803.06	806.58	2,028.50	2,004.92	23.58	86.025	
6,300.00	6,160.90	6,375.69	6,160.90	10.92	24.51	-153.44	-803.06	806.58	2,035.62	2,011.70	23.92	85.107	
6,400.00	6,260.80	6,475.58	6,260.80	10.98	24.62	-153.54	-803.06	806.58	2,039.62	2,015.39	24.23	84.188	
6,478.21	6,339.00	6,553.79	6,339.00	11.00	24.71	108.34	-803.06	806.58	2,040.58	2,016.02	24.56	83.085	
6,500.00	6,360.79	6,575.57	6,360.79	11.00	24.74	108.34	-803.06	806.58	2,040.58	2,015.98	24.60	82.949	
6,600.00	6,460.79	6,675.57	6,460.79	11.02	24.86	108.34	-803.06	806.58	2,040.58	2,015.79	24.79	82.326	
6,700.00	6,560.79	6,775.57	6,560.79	11.03	24.98	108.34	-803.06	806.58	2,040.58	2,015.60	24.97	81.707	
6,800.00	6,660.79	6,875.57	6,660.79	11.05	25.10	108.34	-803.06	806.58	2,040.58	2,015.41	25.16	81.092	
6,900.00	6,760.79	6,975.57	6,760.79	11.07	25.22	108.34	-803.06	806.58	2,040.58	2,015.22	25.35	80.481	
7,000.00	6,860.79	7,075.57	6,860.79	11.09	25.35	108.34	-803.06	806.58	2,040.58	2,015.03	25.55	79.875	
7,100.00	6,960.79	7,175.57	6,960.79	11.10	25.47	108.34	-803.06	806.58	2,040.58	2,014.84	25.74	79.272	
7,200.00	7,060.79	7,275.57	7,060.79	11.12	25.60	108.34	-803.06	806.58	2,040.58	2,014.64	25.94	78.674	
7,300.00	7,160.79	7,375.57	7,160.79	11.14	25.73	108.34	-803.06	806.58	2,040.58	2,014.44	26.13	78.081	
7,400.00	7,260.79	7,475.57	7,260.79	11.16	25.85	108.34	-803.06	806.58	2,040.58	2,014.24	26.33	77.492	
7,500.00	7,360.79	7,575.57	7,360.79	11.17	25.99	108.34	-803.06	806.58	2,040.58	2,014.04	26.53	76.908	
7,600.00	7,460.79	7,675.57	7,460.79	11.19	26.12	108.34	-803.06	806.58	2,040.58	2,013.84	26.73	76.329	
7,700.00	7,560.79	7,775.57	7,560.79	11.21	26.25	108.34	-803.06	806.58	2,040.58	2,013.64	26.94	75.755	
7,800.00	7,660.79	7,875.57	7,660.79	11.23	26.39	108.34	-803.06	806.58	2,040.58	2,013.44	27.14	75.186	
7,900.00	7,760.79	7,975.57	7,760.79	11.25	26.52	108.34	-803.06	806.58	2,040.58	2,013.23	27.35	74.622	
8,000.00	7,860.79	8,075.57	7,860.79	11.27	26.66	108.34	-803.06	806.58	2,040.58	2,013.02	27.55	74.063	
8,100.00	7,960.79	8,099.79	7,885.00	11.29	26.69	108.34	-803.06	806.58	2,041.98	2,014.36	27.63	73.917	
8,200.00	8,060.79	8,099.79	7,885.00	11.31	26.69	108.34	-803.06	806.58	2,048.13	2,020.48	27.66	74.057	
8,300.00	8,160.79	8,099.79	7,885.00	11.33	26.69	108.34	-803.06	806.58	2,059.13	2,031.44	27.69	74.370	
8,400.00	8,260.79	8,099.79	7,885.00	11.35	26.69	108.34	-803.06	806.58	2,074.89	2,047.17	27.72	74.854	
8,450.21	8,311.00	8,099.79	7,885.00	11.36	26.69	108.34	-803.06	806.58	2,084.57	2,056.83	27.73	75.161	

<b>Company:</b>	US ROCKIES REGION PLANNING	<b>Local Co-ordinate Reference:</b>	Well P_DRY CREEK 31-27
<b>Project:</b>	KERR MCGEE OIL & GAS ONSHORE LP	<b>TVD Reference:</b>	WELL @ 5023.00ft (Original Well Elev)
<b>Reference Site:</b>	WELD_DRY CREEK PAD 7	<b>MD Reference:</b>	WELL @ 5023.00ft (Original Well Elev)
<b>Site Error:</b>	0.00ft	<b>North Reference:</b>	Grid
<b>Reference Well:</b>	P_DRY CREEK 31-27	<b>Survey Calculation Method:</b>	Minimum Curvature
<b>Well Error:</b>	0.00ft	<b>Output errors are at</b>	2.00 sigma
<b>Reference Wellbore</b>	P_DRY CREEK 31-27	<b>Database:</b>	EDM 2003.21 Single User Db
<b>Reference Design:</b>	PLAN #1 10-26-09 RHS	<b>Offset TVD Reference:</b>	Offset Datum

Offset Design												Offset Site Error:	0.00 ft
Survey Program: 0-UNKNOWN												Offset Well Error:	0.00 ft
Reference	Offset	Semi Major Axis		Distance								Warning	
Measured Depth (ft)	Vertical Depth (ft)	Measured Depth (ft)	Vertical Depth (ft)	Reference (ft)	Offset (ft)	Highside Toolface (°)	Offset Wellbore Centre +N/-S (ft)	+E/-W (ft)	Between Centres (ft)	Between Ellipses (ft)	Minimum Separation (ft)	Separation Factor	
0.00	0.00	0.00	0.00	0.00	0.00	-101.18	-4.53	-22.93	23.38				
100.00	100.00	100.00	100.00	0.04	1.70	-101.18	-4.53	-22.93	23.38	21.63	1.74	13.400	
200.00	200.00	200.00	200.00	0.10	5.70	-101.18	-4.53	-22.93	23.38	17.58	5.80	4.033	
300.00	300.00	300.00	300.00	0.15	9.70	-101.18	-4.53	-22.93	23.38	13.53	9.85	2.373	
400.00	400.00	400.00	400.00	0.20	13.70	-101.18	-4.53	-22.93	23.38	9.47	13.90	1.682	
500.00	500.00	500.00	500.00	0.25	17.70	-101.18	-4.53	-22.93	23.38	5.42	17.95	1.302 Level 3	
600.00	600.00	600.00	600.00	0.31	21.70	-101.18	-4.53	-22.93	23.38	1.37	22.01	1.062 Level 2	
700.00	700.00	700.00	700.00	0.36	25.70	-101.18	-4.53	-22.93	23.38	-2.68	26.06	0.897 Level 1	
800.00	800.00	800.00	800.00	0.41	29.70	-101.18	-4.53	-22.93	23.38	-6.73	30.11	0.776 Level 1	
900.00	900.00	900.00	900.00	0.46	33.70	-101.18	-4.53	-22.93	23.38	-10.79	34.16	0.684 Level 1	
1,000.00	1,000.00	1,000.00	1,000.00	0.52	37.70	-101.18	-4.53	-22.93	23.38	-14.84	38.22	0.612 Level 1	
1,100.00	1,100.00	1,100.00	1,100.00	0.57	41.70	-101.18	-4.53	-22.93	23.38	-18.89	42.27	0.553 Level 1	
1,200.00	1,200.00	1,200.00	1,200.00	0.62	45.70	-101.18	-4.53	-22.93	23.38	-22.94	46.32	0.505 Level 1	
1,250.00	1,250.00	1,250.00	1,250.00	0.65	47.70	-101.18	-4.53	-22.93	23.38	-24.97	48.35	0.484 Level 1	
1,300.00	1,300.00	1,300.00	1,300.00	0.67	49.70	-3.14	-4.53	-22.93	22.94	-27.42	50.37	0.455 Level 1	
1,400.00	1,399.93	1,399.93	1,399.93	0.73	53.70	-3.70	-4.53	-22.93	19.46	-34.89	54.35	0.358 Level 1	
1,500.00	1,499.68	1,499.68	1,499.68	0.78	57.69	-5.78	-4.53	-22.93	12.50	-45.74	58.25	0.215 Level 1	
1,600.00	1,599.13	1,599.13	1,599.13	0.85	61.67	-32.45	-4.53	-22.93	2.35	-59.82	62.18	0.038 Level 1	
1,615.96	1,614.96	1,614.96	1,614.96	0.87	62.30	-90.00	-4.53	-22.93	1.26	-61.91	63.16	0.020 Level 1, CC, ES, SF	
1,700.00	1,698.15	1,698.15	1,698.15	0.94	65.63	-173.92	-4.53	-22.93	11.99	-53.72	65.72	0.183 Level 1	
1,800.00	1,796.63	1,796.63	1,796.63	1.05	69.57	-177.50	-4.53	-22.93	29.32	-39.92	69.24	0.423 Level 1	
1,900.00	1,894.44	1,894.44	1,894.44	1.19	73.48	-178.53	-4.53	-22.93	50.10	-22.52	72.61	0.690 Level 1	
1,985.37	1,977.32	1,977.32	1,977.32	1.34	76.79	-178.95	-4.53	-22.93	70.53	-4.82	75.36	0.936 Level 1	
2,000.00	1,991.47	1,991.47	1,991.47	1.36	77.36	-179.00	-4.53	-22.93	74.25	-1.67	75.92	0.978 Level 1	
2,100.00	2,088.19	2,088.19	2,088.19	1.56	81.23	-179.25	-4.53	-22.93	99.63	19.90	79.74	1.250 Level 2	
2,200.00	2,184.92	2,184.92	2,184.92	1.77	85.10	-179.41	-4.53	-22.93	125.02	41.46	83.56	1.496 Level 3	
2,300.00	2,281.64	2,281.64	2,281.64	1.98	88.97	-179.51	-4.53	-22.93	150.41	63.02	87.39	1.721	
2,400.00	2,378.37	2,378.37	2,378.37	2.20	92.83	-179.58	-4.53	-22.93	175.79	84.58	91.22	1.927	
2,500.00	2,475.09	2,475.09	2,475.09	2.43	96.70	-179.63	-4.53	-22.93	201.18	106.13	95.05	2.117	
2,600.00	2,571.81	2,571.81	2,571.81	2.65	100.57	-179.67	-4.53	-22.93	226.57	127.69	98.88	2.291	
2,700.00	2,668.54	2,668.54	2,668.54	2.88	104.44	-179.70	-4.53	-22.93	251.96	149.24	102.72	2.453	
2,800.00	2,765.26	2,765.26	2,765.26	3.11	108.31	-179.73	-4.53	-22.93	277.35	170.79	106.56	2.603	
2,900.00	2,861.98	2,861.98	2,861.98	3.34	112.18	-179.75	-4.53	-22.93	302.73	192.34	110.39	2.742	
3,000.00	2,958.71	2,958.71	2,958.71	3.58	116.05	-179.77	-4.53	-22.93	328.12	213.89	114.23	2.872	
3,100.00	3,055.43	3,055.43	3,055.43	3.81	119.92	-179.79	-4.53	-22.93	353.51	235.44	118.07	2.994	
3,200.00	3,152.15	3,152.15	3,152.15	4.04	123.79	-179.80	-4.53	-22.93	378.90	256.99	121.91	3.108	
3,300.00	3,248.88	3,248.88	3,248.88	4.28	127.66	-179.82	-4.53	-22.93	404.29	278.54	125.75	3.215	
3,400.00	3,345.60	3,345.60	3,345.60	4.51	131.52	-179.83	-4.53	-22.93	429.67	300.09	129.59	3.316	
3,500.00	3,442.32	3,442.32	3,442.32	4.75	135.39	-179.84	-4.53	-22.93	455.06	321.64	133.43	3.411	
3,600.00	3,539.05	3,539.05	3,539.05	4.98	139.26	-179.85	-4.53	-22.93	480.45	343.18	137.27	3.500	
3,700.00	3,635.77	3,635.77	3,635.77	5.22	143.13	-179.85	-4.53	-22.93	505.84	364.73	141.11	3.585	
3,800.00	3,732.49	3,732.49	3,732.49	5.46	147.00	-179.86	-4.53	-22.93	531.23	386.28	144.95	3.665	
3,900.00	3,829.22	3,829.22	3,829.22	5.69	150.87	-179.87	-4.53	-22.93	556.62	407.82	148.79	3.741	
4,000.00	3,925.94	3,925.94	3,925.94	5.93	154.74	-179.87	-4.53	-22.93	582.00	429.37	152.64	3.813	
4,100.00	4,022.66	4,022.66	4,022.66	6.17	158.61	-179.88	-4.53	-22.93	607.39	450.92	156.48	3.882	
4,200.00	4,119.39	4,119.39	4,119.39	6.40	162.48	-179.88	-4.53	-22.93	632.78	472.46	160.32	3.947	
4,300.00	4,216.11	4,216.11	4,216.11	6.64	166.34	-179.89	-4.53	-22.93	658.17	494.01	164.16	4.009	
4,400.00	4,312.84	4,312.84	4,312.84	6.88	170.21	-179.89	-4.53	-22.93	683.56	515.55	168.00	4.069	
4,500.00	4,409.56	4,409.56	4,409.56	7.11	174.08	-179.90	-4.53	-22.93	708.95	537.10	171.85	4.125	
4,600.00	4,506.28	4,506.28	4,506.28	7.35	177.95	-179.90	-4.53	-22.93	734.33	558.64	175.69	4.180	
4,700.00	4,603.01	4,603.01	4,603.01	7.59	181.82	-179.90	-4.53	-22.93	759.72	580.19	179.53	4.232	
4,800.00	4,699.73	4,699.73	4,699.73	7.83	185.69	-179.91	-4.53	-22.93	785.11	601.73	183.38	4.281	

CC - Min centre to center distance or convergent point, SF - min separation factor, ES - min ellipse separation

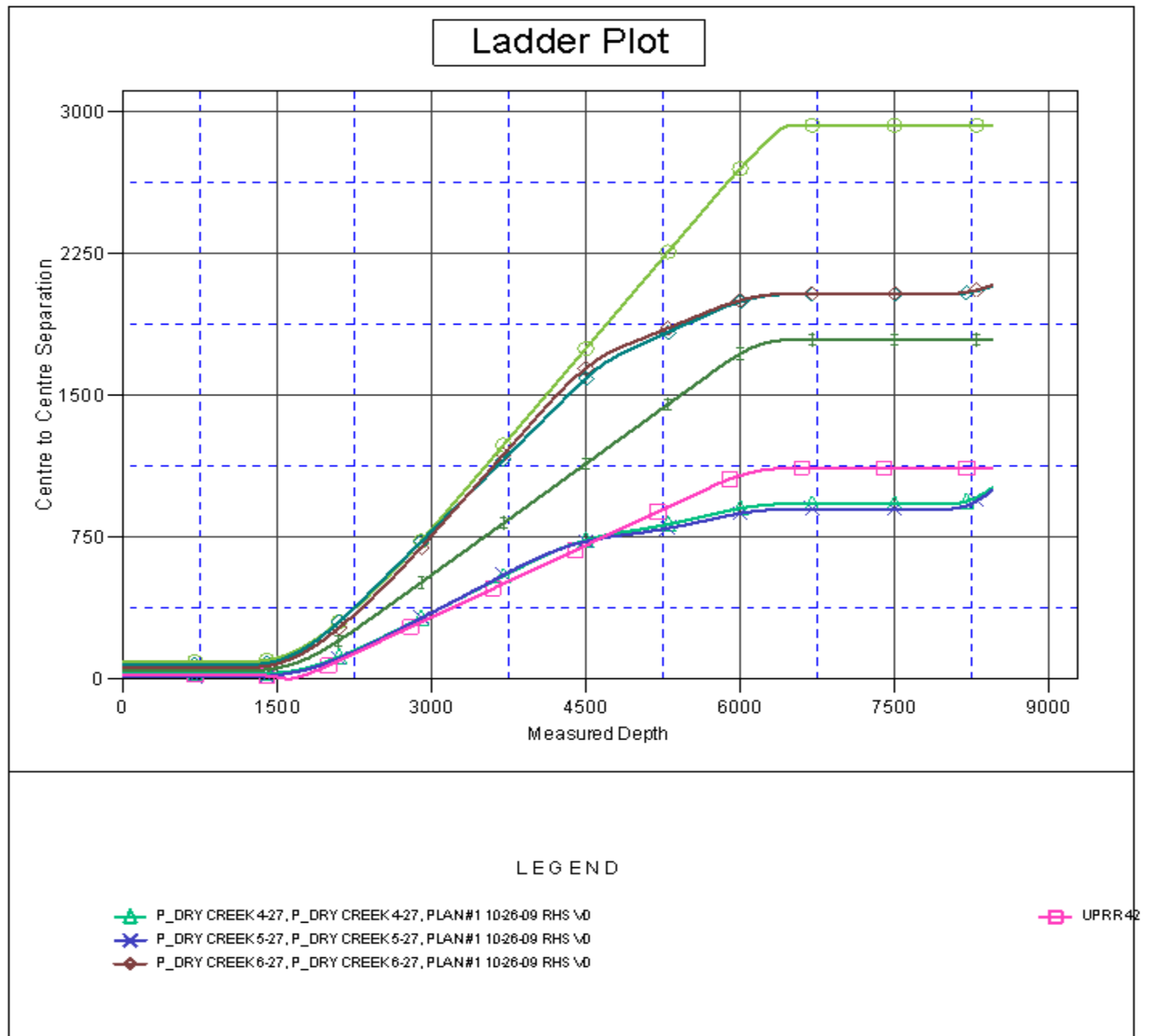
<b>Company:</b>	US ROCKIES REGION PLANNING	<b>Local Co-ordinate Reference:</b>	Well P_DRY CREEK 31-27
<b>Project:</b>	KERR MCGEE OIL & GAS ONSHORE LP	<b>TVD Reference:</b>	WELL @ 5023.00ft (Original Well Elev)
<b>Reference Site:</b>	WELD_DRY CREEK PAD 7	<b>MD Reference:</b>	WELL @ 5023.00ft (Original Well Elev)
<b>Site Error:</b>	0.00ft	<b>North Reference:</b>	Grid
<b>Reference Well:</b>	P_DRY CREEK 31-27	<b>Survey Calculation Method:</b>	Minimum Curvature
<b>Well Error:</b>	0.00ft	<b>Output errors are at</b>	2.00 sigma
<b>Reference Wellbore</b>	P_DRY CREEK 31-27	<b>Database:</b>	EDM 2003.21 Single User Db
<b>Reference Design:</b>	PLAN #1 10-26-09 RHS	<b>Offset TVD Reference:</b>	Offset Datum

Offset Design												Offset Site Error:	0.00 ft
Survey Program: 0-UNKNOWN												Offset Well Error:	0.00 ft
Reference		Offset		Semi Major Axis			Distance						
Measured Depth (ft)	Vertical Depth (ft)	Measured Depth (ft)	Vertical Depth (ft)	Reference (ft)	Offset (ft)	Highside Toolface (°)	Offset Wellbore Centre +N/-S (ft)	+E/-W (ft)	Between Centres (ft)	Between Ellipses (ft)	Minimum Separation (ft)	Separation Factor	Warning
4,900.00	4,796.45	4,796.45	4,796.45	8.07	189.56	-179.91	-4.53	-22.93	810.50	623.28	187.22	4.329	
5,000.00	4,893.18	4,893.18	4,893.18	8.30	193.43	-179.91	-4.53	-22.93	835.89	644.82	191.06	4.375	
5,100.00	4,989.90	4,989.90	4,989.90	8.54	197.30	-179.91	-4.53	-22.93	861.28	666.37	194.91	4.419	
5,200.00	5,086.62	5,086.62	5,086.62	8.78	201.16	-179.92	-4.53	-22.93	886.66	687.91	198.75	4.461	
5,300.00	5,183.35	5,183.35	5,183.35	9.02	205.03	-179.92	-4.53	-22.93	912.05	709.46	202.59	4.502	
5,400.00	5,280.07	5,280.07	5,280.07	9.26	208.90	-179.92	-4.53	-22.93	937.44	731.00	206.44	4.541	
5,500.00	5,376.79	5,376.79	5,376.79	9.49	212.77	-179.92	-4.53	-22.93	962.83	752.55	210.28	4.579	
5,600.00	5,473.52	5,473.52	5,473.52	9.73	216.64	-179.92	-4.53	-22.93	988.22	774.09	214.13	4.615	
5,700.00	5,570.24	5,570.24	5,570.24	9.97	220.51	-179.93	-4.53	-22.93	1,013.61	795.64	217.97	4.650	
5,742.84	5,611.68	5,611.68	5,611.68	10.07	222.17	-179.93	-4.53	-22.93	1,024.48	804.87	219.62	4.665	
5,800.00	5,667.11	5,667.11	5,667.11	10.20	224.38	-179.93	-4.53	-22.93	1,038.44	815.53	222.91	4.659	
5,900.00	5,764.71	5,764.71	5,764.71	10.41	228.29	-179.93	-4.53	-22.93	1,060.19	831.67	228.53	4.639	
6,000.00	5,863.01	5,863.01	5,863.01	10.58	232.22	-179.93	-4.53	-22.93	1,078.53	844.58	233.94	4.610	
6,100.00	5,961.89	5,961.89	5,961.89	10.73	236.18	-179.93	-4.53	-22.93	1,093.42	854.28	239.13	4.572	
6,200.00	6,061.22	6,061.22	6,061.22	10.84	240.15	-179.93	-4.53	-22.93	1,104.85	860.77	244.08	4.527	
6,300.00	6,160.90	6,160.90	6,160.90	10.92	244.14	-179.94	-4.53	-22.93	1,112.81	864.04	248.76	4.473	
6,400.00	6,260.80	6,260.80	6,260.80	10.98	248.13	-179.94	-4.53	-22.93	1,117.28	864.12	253.16	4.413	
6,478.21	6,339.00	6,339.00	6,339.00	11.00	251.26	81.97	-4.53	-22.93	1,118.35	861.95	256.39	4.362	
6,500.00	6,360.79	6,360.79	6,360.79	11.00	252.13	81.97	-4.53	-22.93	1,118.35	861.07	257.27	4.347	
6,600.00	6,460.79	6,460.79	6,460.79	11.02	256.13	81.97	-4.53	-22.93	1,118.35	857.04	261.31	4.280	
6,700.00	6,560.79	6,560.79	6,560.79	11.03	260.13	81.97	-4.53	-22.93	1,118.35	853.00	265.34	4.215	
6,800.00	6,660.79	6,660.79	6,660.79	11.05	264.13	81.97	-4.53	-22.93	1,118.35	848.97	269.38	4.152	
6,900.00	6,760.79	6,760.79	6,760.79	11.07	268.13	81.97	-4.53	-22.93	1,118.35	844.93	273.41	4.090	
7,000.00	6,860.79	6,860.79	6,860.79	11.09	272.13	81.97	-4.53	-22.93	1,118.35	840.90	277.45	4.031	
7,100.00	6,960.79	6,960.79	6,960.79	11.10	276.13	81.97	-4.53	-22.93	1,118.35	836.86	281.49	3.973	
7,200.00	7,060.79	7,060.79	7,060.79	11.12	280.13	81.97	-4.53	-22.93	1,118.35	832.82	285.52	3.917	
7,300.00	7,160.79	7,160.79	7,160.79	11.14	284.13	81.97	-4.53	-22.93	1,118.35	828.79	289.56	3.862	
7,400.00	7,260.79	7,260.79	7,260.79	11.16	288.13	81.97	-4.53	-22.93	1,118.35	824.75	293.60	3.809	
7,500.00	7,360.79	7,360.79	7,360.79	11.17	292.13	81.97	-4.53	-22.93	1,118.35	820.71	297.63	3.757	
7,600.00	7,460.79	7,460.79	7,460.79	11.19	296.13	81.97	-4.53	-22.93	1,118.35	816.68	301.67	3.707	
7,700.00	7,560.79	7,560.79	7,560.79	11.21	300.13	81.97	-4.53	-22.93	1,118.35	812.64	305.71	3.658	
7,800.00	7,660.79	7,660.79	7,660.79	11.23	304.13	81.97	-4.53	-22.93	1,118.35	808.60	309.75	3.611	
7,900.00	7,760.79	7,760.79	7,760.79	11.25	308.13	81.97	-4.53	-22.93	1,118.35	804.56	313.78	3.564	
8,000.00	7,860.79	7,860.79	7,860.79	11.27	312.13	81.97	-4.53	-22.93	1,118.35	800.52	317.82	3.519	
8,100.00	7,960.79	7,960.79	7,960.79	11.29	316.13	81.97	-4.53	-22.93	1,118.35	796.49	321.86	3.475	
8,200.00	8,060.79	8,060.79	8,060.79	11.31	320.13	81.97	-4.53	-22.93	1,118.35	792.45	325.90	3.432	
8,300.00	8,160.79	8,160.79	8,160.79	11.33	324.13	81.97	-4.53	-22.93	1,118.35	788.41	329.94	3.390	
8,356.83	8,217.62	8,217.62	8,217.62	11.34	326.40	81.97	-4.53	-22.93	1,118.35	786.11	332.23	3.366	
8,400.00	8,260.79	8,238.00	8,238.00	11.35	327.22	81.97	-4.53	-22.93	1,118.58	785.51	333.07	3.358	
8,450.21	8,311.00	8,238.00	8,238.00	11.36	327.22	81.97	-4.53	-22.93	1,120.73	787.64	333.09	3.365	



<b>Company:</b>	US ROCKIES REGION PLANNING	<b>Local Co-ordinate Reference:</b>	Well P_DRY CREEK 31-27
<b>Project:</b>	KERR MCGEE OIL & GAS ONSHORE LP	<b>TVD Reference:</b>	WELL @ 5023.00ft (Original Well Elev)
<b>Reference Site:</b>	WELD_DRY CREEK PAD 7	<b>MD Reference:</b>	WELL @ 5023.00ft (Original Well Elev)
<b>Site Error:</b>	0.00ft	<b>North Reference:</b>	Grid
<b>Reference Well:</b>	P_DRY CREEK 31-27	<b>Survey Calculation Method:</b>	Minimum Curvature
<b>Well Error:</b>	0.00ft	<b>Output errors are at</b>	2.00 sigma
<b>Reference Wellbore</b>	P_DRY CREEK 31-27	<b>Database:</b>	EDM 2003.21 Single User Db
<b>Reference Design:</b>	PLAN #1 10-26-09 RHS	<b>Offset TVD Reference:</b>	Offset Datum

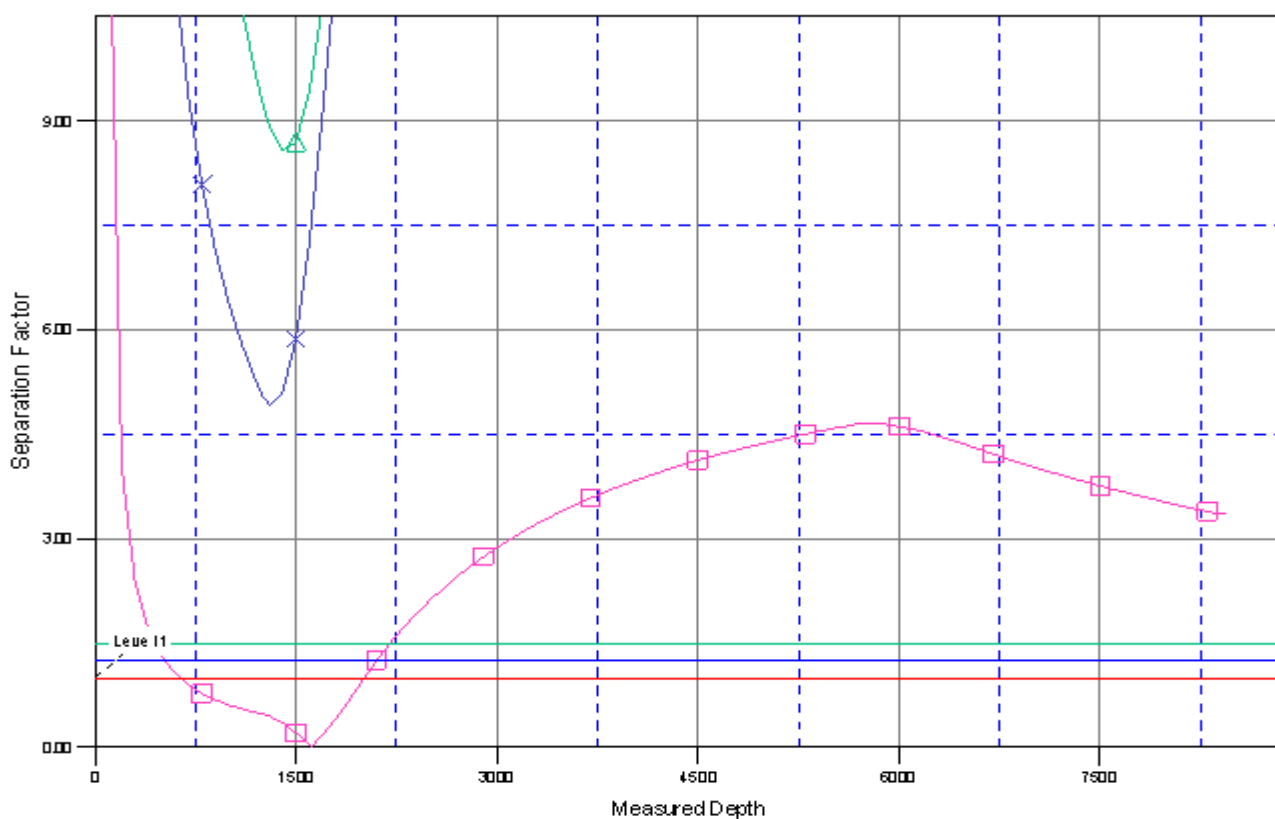
Reference Depths are relative to WELL @ 5023.00ft (Original Well Elev) Coordinates are relative to: P\_DRY CREEK 31-27  
Offset Depths are relative to Offset Datum Coordinate System is US State Plane 1983, Colorado Northern Zone  
Central Meridian is 105° 30' 0.000 W ° Grid Convergence at Surface is: 0.40°



<b>Company:</b>	US ROCKIES REGION PLANNING	<b>Local Co-ordinate Reference:</b>	Well P_DRY CREEK 31-27
<b>Project:</b>	KERR MCGEE OIL & GAS ONSHORE LP	<b>TVD Reference:</b>	WELL @ 5023.00ft (Original Well Elev)
<b>Reference Site:</b>	WELD_DRY CREEK PAD 7	<b>MD Reference:</b>	WELL @ 5023.00ft (Original Well Elev)
<b>Site Error:</b>	0.00ft	<b>North Reference:</b>	Grid
<b>Reference Well:</b>	P_DRY CREEK 31-27	<b>Survey Calculation Method:</b>	Minimum Curvature
<b>Well Error:</b>	0.00ft	<b>Output errors are at</b>	2.00 sigma
<b>Reference Wellbore</b>	P_DRY CREEK 31-27	<b>Database:</b>	EDM 2003.21 Single User Db
<b>Reference Design:</b>	PLAN #1 10-26-09 RHS	<b>Offset TVD Reference:</b>	Offset Datum

Reference Depths are relative to WELL @ 5023.00ft (Original Well Elev) Coordinates are relative to: P\_DRY CREEK 31-27  
Offset Depths are relative to Offset Datum Coordinate System is US State Plane 1983, Colorado Northern Zone  
Central Meridian is 105° 30' 0.000 W ° Grid Convergence at Surface is: 0.40°

## Separation Factor Plot



### LEGEND

- ▲ P\_DRY CREEK 4-27, P\_DRY CREEK 4-27, PLAN#1 10-26-09 RHS \0
- ✕ P\_DRY CREEK 5-27, P\_DRY CREEK 5-27, PLAN#1 10-26-09 RHS \0
- ◆ P\_DRY CREEK 6-27, P\_DRY CREEK 6-27, PLAN#1 10-26-09 RHS \0

◻ UPRR42