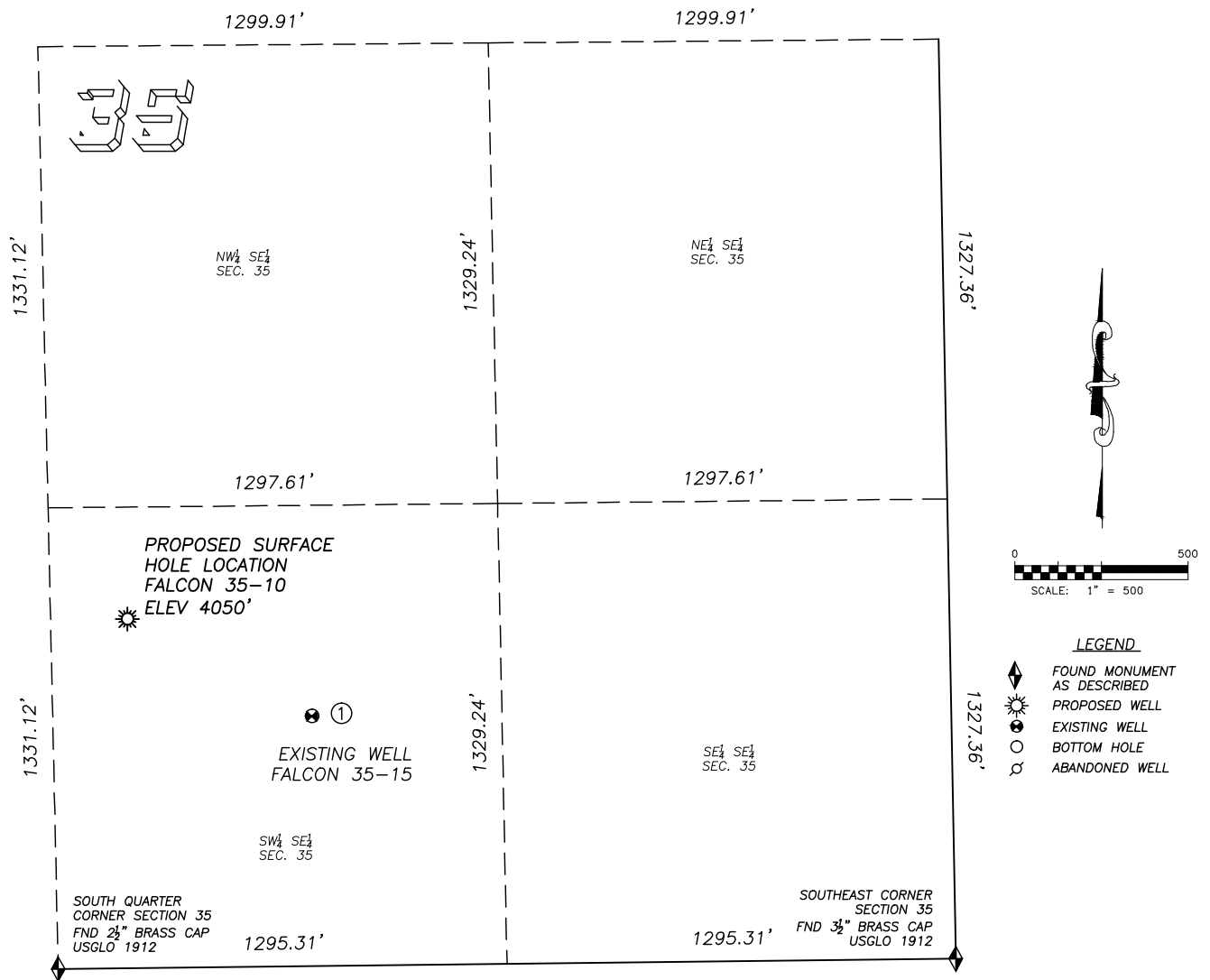


SITE SKETCH FALCON 35-10

SECTION 35, TOWNSHIP 2 SOUTH, RANGE 46 WEST OF THE 6TH PRINCIPAL MERIDIAN



①

FALCON 35-15

SW/SE SEC. 35
721' FSL, 1846' FEL
602' SE OF PROPOSED
SURFACE HOLE LOCATION
LAT. N39.83368°
LONG. W102.49007°
EL: 4060'
PDOP 1.4

NOTES:

1. THIS DOES NOT REPRESENT A BOUNDARY SURVEY
2. THE LATITUDES AND LONGITUDES SHOWN ARE REFERENCED TO NAD83
3. DATUM FOR ELEVATION IS NAVD88. ELEVATIONS ARE DERIVED FROM GPS-RTK OBSERVATIONS PROCESSED THROUGH OPUS, UTILIZING THE GEOID03 MODEL.