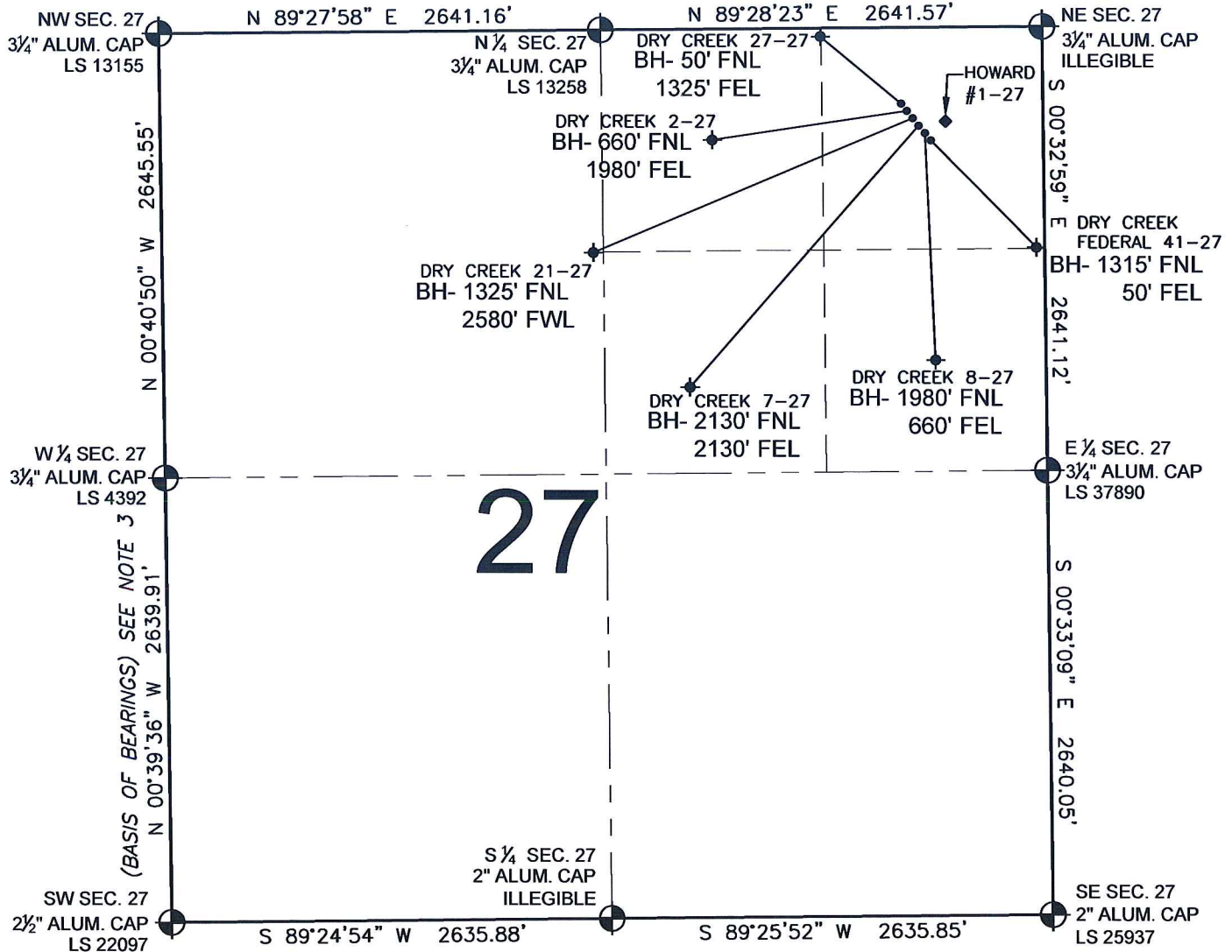


PAD DRAWING - DRY CREEK 6 PAD

SECTION 27, TOWNSHIP 1 NORTH, RANGE 67 WEST, 6TH P.M.



LEGEND

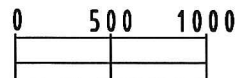
- = EXISTING MONUMENT
 = BOTTOM HOLE
 BH= BOTTOM HOLE
 = PROPOSED WELL
 = EXISTING WELL

NOTES:

- THIS SURVEY WAS DONE BY GPS METHODS AND CONFORMS TO THE MINIMUM STANDARDS SET BY THE C.O.G.C.C., RULE NO. 215
- ELEVATIONS SHOWN AT THE WELL HEAD, AS WELL AS HORIZONTAL CONTROL, ARE BASED ON GPS-RTK VALUES DERIVED FROM DOING 2-HOUR STATIC GPS SESSIONS AND REDUCTIONS USING O.P.U.S. SOLUTIONS.
VERTICAL = NAVD88; HORIZONTAL = NAD83/92
- THE BEARINGS SHOWN HEREON ARE BASED ON GPS OBSERVATIONS BETWEEN THE MONUMENTS SHOWN HEREON AS FOUND ON THE FIELD DATE BELOW.
- DISTANCES SHOWN ARE AT GROUND LEVEL, AS MEASURED IN THE FIELD, WITH TIES TO WELLS MEASURED AT A PERPENDICULAR TO SECTION LINES.

NOTES:

- DRY CREEK 27-27 TO BE AT 454' FNL, 847' FEL.
 BOTTOM HOLE AT 50' FNL & 1325' FEL.
 DRY CREEK 2-27 TO BE AT 463' FNL, 835' FEL.
 BOTTOM HOLE AT 660' FNL & 1980' FEL.
 DRY CREEK 21-27 TO BE AT 473' FNL, 822' FEL.
 BOTTOM HOLE AT 1325' FNL & 2580' FWL.
 DRY CREEK 7-27 TO BE AT 483' FNL, 809' FEL.
 BOTTOM HOLE AT 2130' FNL & 2130' FEL.
 DRY CREEK 8-27 TO BE AT 492' FNL, 796' FEL.
 BOTTOM HOLE AT 1980' FNL & 660' FEL.
 DRY CREEK FEDERAL 41-27 TO BE AT 502' FNL, 783' FEL.
 BOTTOM HOLE AT 1315' FNL & 50' FEL.
 HOWARD #1-27 IS 464' FNL, 750' FEL.



SCALE: 1"=1000'

REVISIONS

INITIAL	DATE
SMF	11-16-09

PREPARED BY:

PFS

Petroleum Field Services, LLC
1801 W. 13th Ave.
Denver, CO 80204



KERR-MCGEE OIL & GAS ONSHORE LP

FIELD DATE:
09-09-09

DRAWING DATE:
09-14-09

BY:
SMF

PAD NAME:

DRY CREEK 6 PAD

SURFACE LOCATION:

WELD COUNTY, COLORADO
NE 1/4 NE 1/4, SEC. 27, T1N, R67W